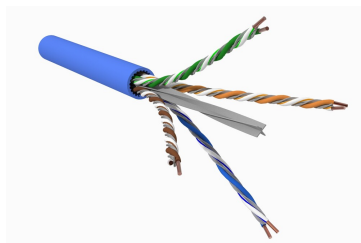


# 760258513 | 2073A BLU C6 4/21 U/UTP R1000



GigaREACH™ XL 2073A Category 6 U/UTP Cable, CMP Plenum, blue jacket, 4 pair count, 1000 ft (305 m) length, reel

## Product Classification

### Regional Availability

Asia | Australia/New Zealand | China | EMEA | Europe | India | Latin America | North America

### Portfolio

SYSTIMAX®

### Product Type

Twisted pair cable

### Product Brand

GigaREACH™ XL

## General Specifications

### Product Number

2073A

### ANSI/TIA Category

6

### Cable Component Type

Horizontal

### Cable Type

U/UTP (unshielded)

### Conductor Type, singles

Solid

### Conductors, quantity

8

### Jacket Color

Blue

### Pairs, quantity

4

### Separator Type

Isolator | Tape separator

### Transmission Standards

ANSI/TIA-568-D.2 | CENELEC EN 50288-6-1 | ISO/IEC 11801 Class E

## Dimensions

### Cable Length

304.8 m | 1000 ft

### Diameter Over Jacket, nominal

7.62 mm | 0.3 in

### Jacket Thickness

1.016 mm | 0.04 in

### Conductor Gauge, singles

21 AWG

## Electrical Specifications

### Insertion Loss Margin

20% to Category 6 standard

# 760258513 | 2073A BLU C6 4/21 U/UTP R1000

<b>Characteristic Impedance</b>	100 ohm
<b>dc Resistance Unbalance, maximum</b>	5 %
<b>dc Resistance, maximum</b>	4.69 ohms/100 m   1.43 ohms/100 ft
<b>Delay Skew, maximum</b>	45 ns
<b>Dielectric Strength, minimum</b>	1500 Vac   2500 Vdc
<b>LP (Limited Power) Rating</b>	0.7 A
<b>Mutual Capacitance at Frequency</b>	6.4 nF/100 m @ 1 kHz
<b>Nominal Velocity of Propagation (NVP)</b>	74 %
<b>Operating Frequency, maximum</b>	250 MHz
<b>Operating Voltage, maximum</b>	80 V
<b>Remote Powering</b>	Fully complies with the recommendations set forth by IEEE 802.3bt (Type 4) for the safe delivery of power over LAN cable when installed according to ISO/IEC 14763-2, CENELEC EN 50174-1, CENELEC EN 50174-2 or TIA TSB-184-A
<b>Safety Voltage Rating</b>	300 V

## Representative Image



## Material Specifications

<b>Conductor Material</b>	Bare copper
<b>Insulation Material</b>	FEP   Polyolefin

# 760258513 | 2073A BLU C6 4/21 U/UTP R1000

---

<b>Jacket Material</b>	Fire retardant PVC
<b>Separator Material</b>	Flame retardant polyolefin

## Mechanical Specifications

<b>Pulling Tension, maximum</b>	11.34 kg   25 lb
---------------------------------	------------------

## Environmental Specifications

<b>Installation temperature</b>	0 °C to +60 °C (+32 °F to +140 °F)
<b>Operating Temperature</b>	-20 °C to +75 °C (-4 °F to +167 °F)
<b>EN50575 CPR Cable EuroClass Fire Performance</b>	No Rating
<b>Environmental Note</b>	Plenum
<b>Environmental Space</b>	Indoor   Plenum
<b>Temperature Rating, ETL</b>	90 °C   194 °F
<b>Fire Safety Listing</b>	CMP
<b>Flame Test Method</b>	CMP   NFPA 262   UL 444   UL 910

## Packaging and Weights

<b>Cable weight</b>	72.92 kg/km   49 lb/kft
<b>Packaging Type</b>	Reel

## Regulatory Compliance/Certifications

<b>Agency</b>	<b>Classification</b>
CHINA-ROHS	Below maximum concentration value
REACH-SVHC	Compliant as per SVHC revision on <a href="https://www.commscope.com/ProductCompliance">www.commscope.com/ProductCompliance</a>
ROHS	Compliant
UK-ROHS	Compliant

