

RRVV-65A-R4VB



8-port sector antenna, 4x 698–960 and 4x 1710–2690 MHz, 65°HPBW, 4x RET

- All Internal RET actuators are connected in “Cascaded SRET” configuration
- Antenna with integrated pluggable RET
- Uses the 4.3-10 connector which is 40 percent smaller than the 7-16 DIN connector

General Specifications

Antenna Type	Sector
Band	Multiband
Color	Light Gray (RAL 7035)
Grounding Type	RF connector inner conductor and body grounded to reflector and mounting bracket
Performance Note	Outdoor usage
Radome Material	Fiberglass, UV resistant
Radiator Material	Aluminum
Reflector Material	Aluminum
RF Connector Interface	4.3-10 Female
RF Connector Location	Bottom
RF Connector Quantity, mid band	4
RF Connector Quantity, low band	4
RF Connector Quantity, total	8

Remote Electrical Tilt (RET) Information

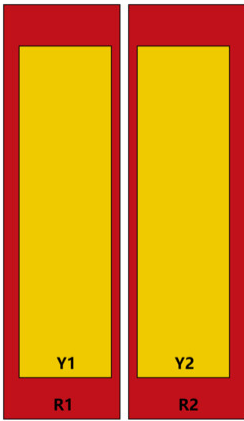
RET Hardware	CommRET v2
RET Interface	8-pin DIN Female 8-pin DIN Male
RET Interface, quantity	1 female 1 male
Input Voltage	10–30 Vdc
Internal RET	Low band (2) Mid band (2)
Power Consumption, active state, maximum	10 W
Power Consumption, idle state, maximum	2 W
Protocol	3GPP/AISG 2.0 (Single RET)

RRVV-65A-R4VB

Dimensions

Width	469 mm 18.465 in
Depth	198 mm 7.795 in
Length	1500 mm 59.055 in
Net Weight, antenna only	24.2 kg 53.352 lb

Array Layout



Array ID	Frequency (MHz)	RF Connector	HPBW	RET (SRET)	AISG No.	AISG RET UID
R1	698-960	1 - 2	65°	1	AISG1	CPxxxxxxxxxxxxxxxxR1
R2	698-960	3 - 4	65°	2	AISG1	CPxxxxxxxxxxxxxxxxR2
Y1	1710-2690	5 - 6	65°	3	AISG1	CPxxxxxxxxxxxxxxxxY1
Y2	1710-2690	7 - 8	65°	4	AISG1	CPxxxxxxxxxxxxxxxxY2

(Sizes of colored boxes are not true depictions of array sizes)

Port Configuration

RRVV-65A-R4VB



Electrical Specifications

Impedance	50 ohm
Operating Frequency Band	1710 – 2690 MHz 698 – 960 MHz
Polarization	±45°
Total Input Power, maximum	900 W

Electrical Specifications

	R1,R2	R1,R2	R1,R2	Y1,Y2	Y1,Y2	Y1,Y2	Y1,Y2
Frequency Band, MHz	698–806	790–894	890–960	1710–1995	1920–2300	2300–2500	2490–2690
RF Port	1-4	1-4	1-4	5-8	5-8	5-8	5-8
Gain, dBi	13.9	14.4	14.5	17.3	17.3	17.2	17.4
Beamwidth, Horizontal, degrees	65	66	65	65	64	63	57
Beamwidth, Vertical, degrees	15.9	14.2	13	6.4	6	5.2	4.6
Beam Tilt, degrees	2–14	2–14	2–14	2–12	2–12	2–12	2–12
USLS (First Lobe), dB	19	20	20	18	20	24	22
Front-to-Back Ratio, Copolarization 180° ± 30°, dB	25	26	27	29	28	26	25

RRVV-65A-R4VB

Isolation, Cross Polarization, dB	25	25	25	28	28	28	28
Isolation, Inter-band, dB	27	27	27	27	27	27	27
VSWR Return loss, dB	1.5 14.0	1.5 14.0	1.5 14.0	1.5 14.0	1.5 14.0	1.5 14.0	1.5 14.0
PIM, 3rd Order, 2 x 20 W, dBc	-150	-150	-150	-150	-150	-150	-150
Input Power per Port, maximum, watts	250	250	250	200	200	200	200

Electrical Specifications, BASTA

Frequency Band, MHz	698–806	790–894	890–960	1710–1995	1920–2300	2300–2500	2490–2690
Gain by all Beam Tilts, average, dBi	13.6	14.1	14.3	16.9	17	16.8	17
Gain by all Beam Tilts Tolerance, dB	±0.5	±0.4	±0.4	±0.4	±0.4	±0.4	±0.5
Beamwidth, Horizontal Tolerance, degrees	±4	±4	±6	±5	±6	±6	±7
Beamwidth, Vertical Tolerance, degrees	±1	±1	±0.5	±0.4	±0.4	±0.5	±0.4
CPR at Boresight, dB	20	19	19	26	24	21	19

Mechanical Specifications

Wind Loading @ Velocity, frontal	394.0 N @ 150 km/h (88.6 lbf @ 150 km/h)
Wind Loading @ Velocity, lateral	206.0 N @ 150 km/h (46.3 lbf @ 150 km/h)
Wind Loading @ Velocity, rear	419.0 N @ 150 km/h (94.2 lbf @ 150 km/h)
Wind Speed, maximum	200 km/h (124 mph)

Packaging and Weights

Width, packed	540 mm 21.26 in
Depth, packed	275 mm 10.827 in
Length, packed	1770 mm 69.685 in
Weight, gross	33.9 kg 74.737 lb

Regulatory Compliance/Certifications

Agency	Classification
ISO 9001:2015	Designed, manufactured and/or distributed under this quality management system
UK-ROHS	Compliant

RRVV-65A-R4VB

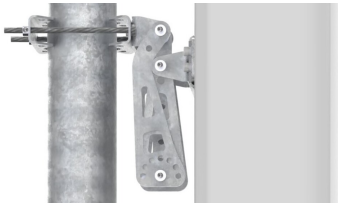
Included Products

- BSAMNT-B92-08 – Wide Profile Antenna Downtilt Mounting Kit for 2.4 - 4.5 in (60 - 115 mm) OD round members. Kit contains one scissor top bracket set and one bottom bracket set.

* Footnotes

Performance Note Severe environmental conditions may degrade optimum performance

BSAMNT-B92-08



Wide Profile Antenna Downtilt Mounting Kit for 2.4 - 4.5 in (60 - 115 mm) OD round members. Kit contains one scissor top bracket set and one bottom bracket set.

Product Classification

Product Type Downtilt mounting kit

General Specifications

Application Outdoor

Color Silver

Dimensions

Compatible Diameter, maximum 115 mm | 4.528 in

Compatible Diameter, minimum 60 mm | 2.362 in

Weight, net 4.4 kg | 9.7 lb

Material Specifications

Material Type Galvanized steel

Packaging and Weights

Included Brackets | Hardware

Weight, gross 4.8 kg | 10.582 lb

Regulatory Compliance/Certifications

Agency	Classification
CE	Compliant with the relevant CE product directives
ISO 9001:2015	Designed, manufactured and/or distributed under this quality management system

