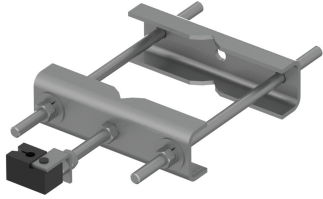


# TES-SS-MSK9L | UNIVERSAL LEG CLAMP FOR LARGER LEG

---



Large Tower Leg Clamp, Mounts up to 6-5/8" round or 6" 60 degree angle or 4-1/2" 90 degree angle Tower legs

## Product Classification

**Product Type** Clamp set

## General Specifications

**Mounting** Round and angle legs

## Dimensions

**Mounting Diameter, maximum** 168.275 mm | 6.625 in

**Mounting Diameter, minimum** 38.1 mm | 1.5 in

## Material Specifications

**Material Type** Hot dip galvanized steel

## Packaging and Weights

**Included** Clamp halves | Threaded rod

**Packaging quantity** 1