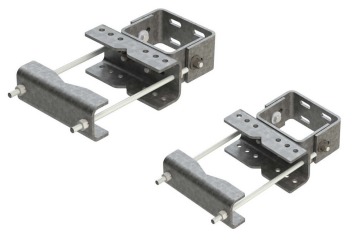


TES-SS-MSK4 | PIPE LEVELING KIT



Tapered Pipe Mount Leveling Kit, attaches up to 8" OD or 60 degree angle Tower Legs, For Pipes 2-3/8" to 4-1/2" OD, U-Bolts sold separately

Product Classification

Product Type Clamp set

General Specifications

Mounting Round and angle legs

Dimensions

Mounting Diameter 2, maximum 203.2 mm | 8 in

Mounting Diameter, maximum 114.3 mm | 4.5 in

Mounting Diameter, minimum 60.325 mm | 2.375 in

Material Specifications

Material Type Hot dip galvanized steel

Packaging and Weights

Included Brackets | Clamp halves | Threaded rod

Packaging quantity 2