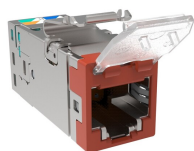


2153365-OR | SLX-DC-6AS-OR



SL-Series Modular Jack, RJ45, Cat6A Shielded, with Dust Cover, Orange

Product Classification

Regional Availability	Asia Australia/New Zealand EMEA Latin America
Portfolio	NETCONNECT®
Product Type	Modular jack
Product Series	SLX Series

General Specifications

ANSI/TIA Category	6A
Cable Type	Shielded
Color	Orange
Conductor Type	Solid Stranded
Integrated Dust Cover Type	Hinged
Mounting	SL Series faceplates and panels
Outlet Type	Standard
Termination Punchdowns, minimum	5 times
Termination Tool	SL Termination tool
Termination Type	IDC
Transmission Standards	ANSI/TIA-568-C.2 ISO/IEC 11801 Class EA
Wiring	T568A T568B

Dimensions

Panel Cutout, recommended	14.78 x 20.07 mm (0.58 x 0.79 in)
Panel Thickness, recommended	1.6 mm 0.063 in
Height	16.13 mm 0.635 in
Width	14.44 mm 0.569 in
Depth	36.8 mm 1.449 in
Compatible Cable Diameter, maximum	8.5 mm 0.335 in

2153365-OR | SLX-DC-6AS-OR

Compatible Insulated Conductor Diameter, maximum	1.6 mm 0.063 in
Contact Plating Thickness	1.27 µm
Compatible Conductor Gauge, solid	26–22 AWG
Compatible Conductor Gauge, stranded	26–24 AWG

Electrical Specifications

Remote Powering	Fully supports the safe delivery of power over LAN cabling described by IEEE 802.3bt (Type 4) and complies with the unmating under electrical load requirements prescribed by IEC 60512-99-002
PoE Durability	Supports IEEE 802.3bt Type 4 (90 W) applications after 3000 plug to jack mating cycles

Material Specifications

Contact Base Material	Beryllium copper
Contact Plating Material	Gold
Material Type	PC+ABS Zamak

Mechanical Specifications

Plug to Jack Mating Cycles	Complies to IEC 60603-7 series
-----------------------------------	--------------------------------

Environmental Specifications

Operating Temperature	-10 °C to +60 °C (+14 °F to +140 °F)
Flammability Rating	UL 94 V-0

Packaging and Weights

Packaging Material	Standard
Packaging quantity	24
Packaging Type	Bag Box

Regulatory Compliance/Certifications

Agency	Classification
CHINA-ROHS	Below maximum concentration value
RCM	Compliant to electrical safety & telecommunications requirements
REACH-SVHC	Compliant as per SVHC revision on www.commscope.com/ProductCompliance
ROHS	Compliant
UK-ROHS	Compliant

