

4

3

2

1

1.0 GENERAL NOTES

- 1.1 ALL METRIC DIMENSIONS ARE IN BRACKETS [X. X]
- 1.2 FOR PATENT INFO: <https://www.cs-pat.com>

2.0 DESIGN NOTES

- 2.1 ANY HAZARDS OR OBSTRUCTIONS TO THE CLIMBING FACILITY AND SAFETY CLIMB MUST BE IDENTIFIED PRIOR TO INSTALLING THE APPURTENANCE. ADDITIONAL PRODUCTS MAY BE REQUIRED TO MAINTAIN THE INTEGRITY OF THE SAFETY CLIMB. DURING INSTALLATION, TEMPORARY AND/OR PERMANENT PRECAUTIONARY MEASURES SHOULD BE TAKEN TO PRESERVE THE CLIMBING FACILITY AND/OR SAFETY CLIMB.

3.0 MANUFACTURING/SPECIAL REQUIREMENTS

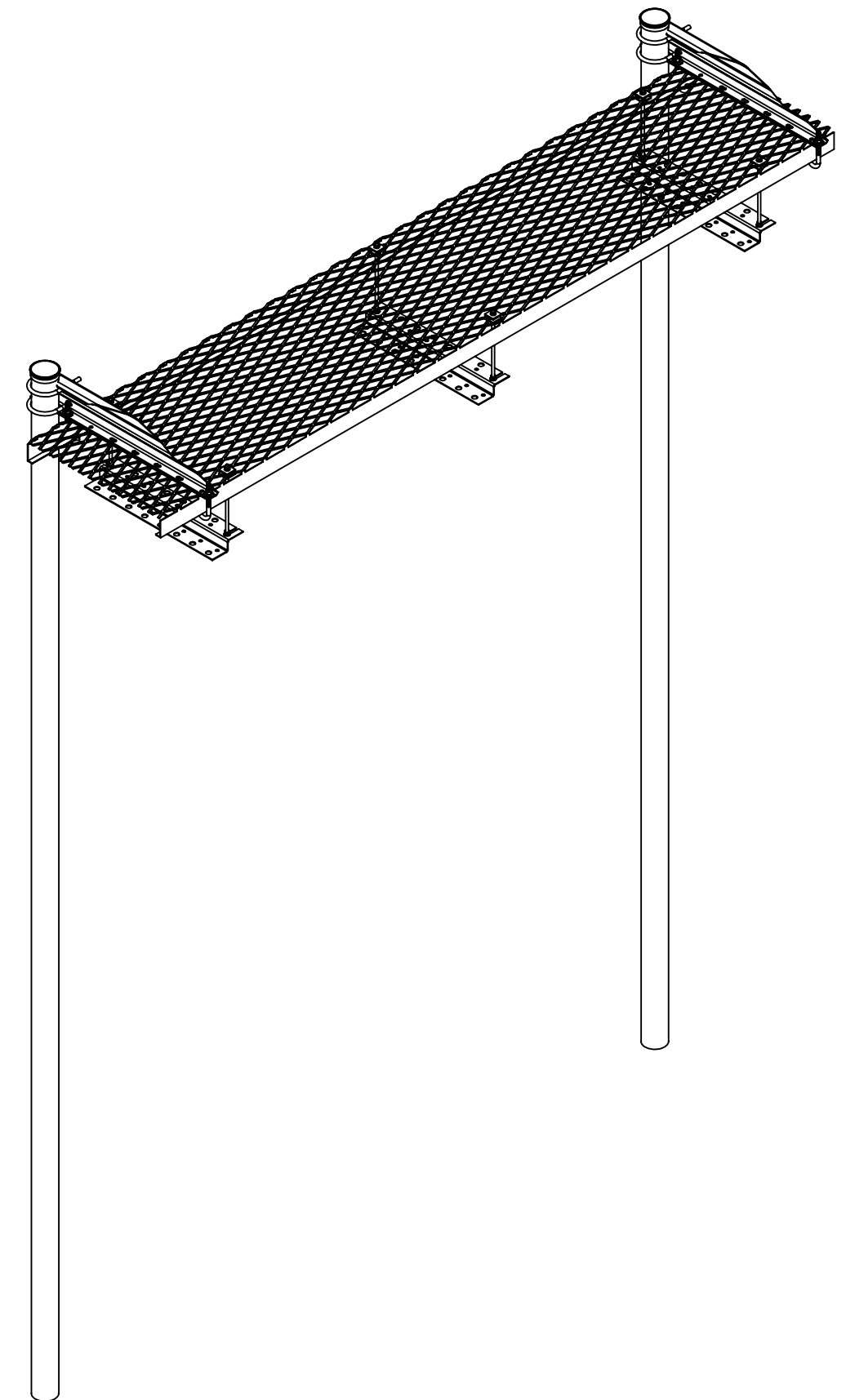
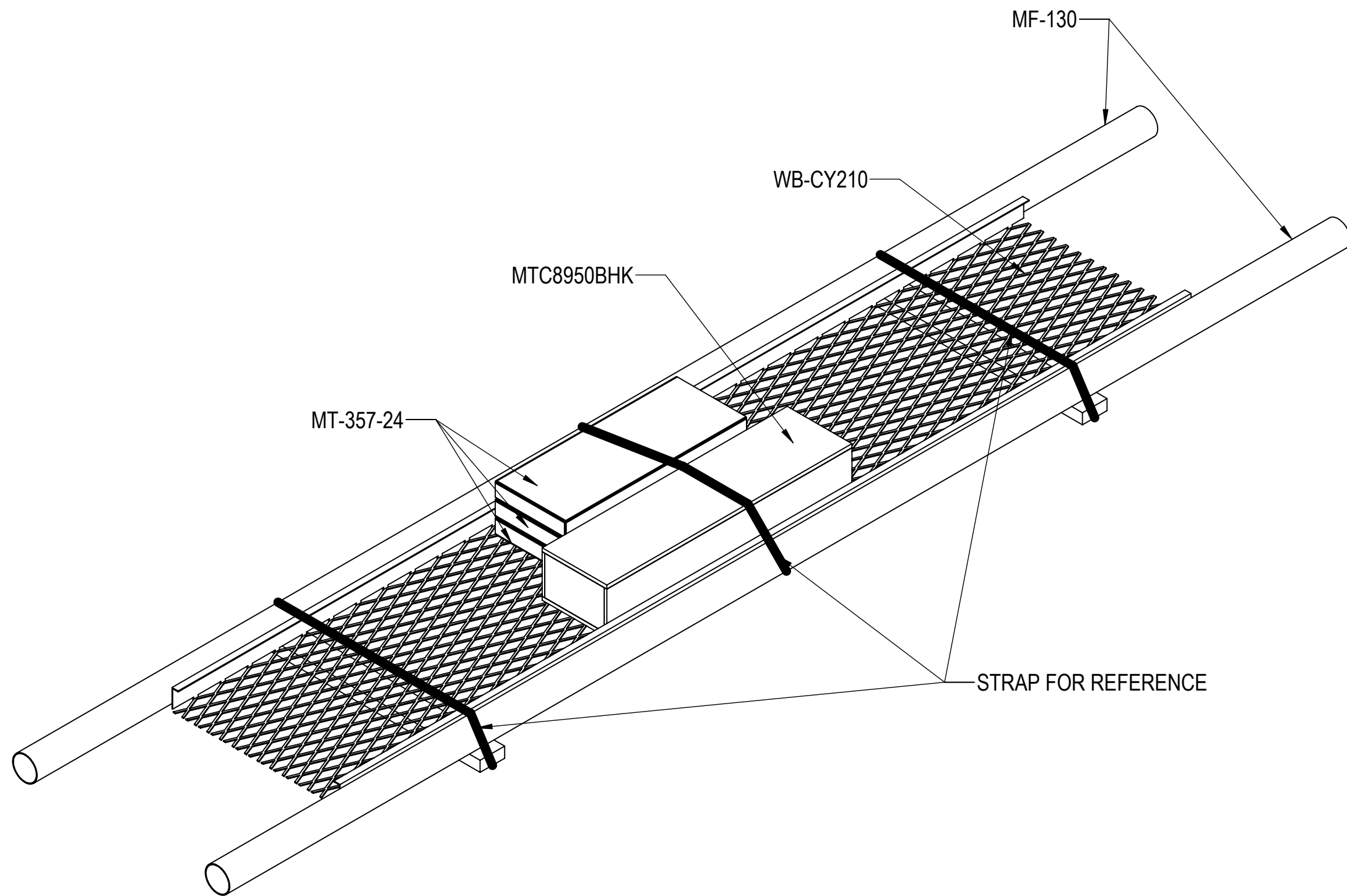
- 3.1 TIGHTEN ALL BOLTS SECURING FLAT PLATES BY THE TURN-OF-NUT METHOD. TIGHTEN ALL U-BOLTS USING TURN-OF-NUT METHOD WITH ATTENTION TO LEAVE EQUAL DISTANCE AND EQUAL FORCE ON EACH LEG OF THE U-BOLT.

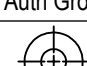
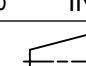
4.0 TEST

5.0 PACKAGING

- 5.1 PACKAGING SHALL MEET COMMSCOPE REQUIREMENTS PER DOCUMENT IS-PL-3005
- 5.2 PRINTED DOCUMENT TO BE PLACED INSIDE POLYBAG AND THEN IN SHIPPING CONTAINER
- 5.3 EXTRA HARDWARE MAY BE SUPPLIED, BAGGED AND SHIPPED

REVISIONS			
REV.	DESCRIPTION	DATE	APPROVED
A	INITIAL RELEASE	JL1183 19DEC23	YZ1080 40185539CMO



COMMSCOPE, INC. OF NORTH CAROLINA										
TOLERANCES					SAP MATERIAL MASTER					
1 PLACE .X[X] ± 0.12[3.0]			3 PLACE .XXX[X] ± 0.030[0.8]		WB-K210-B-T1					
2 PLACE .XX[X] ± 0.06[1.5]			ANGLES ± 2°							
FINISH					MATERIAL					
ICE-BRIDGE, 24"W X 10'L, BUR-POST										
UNLESS OTHERWISE SPECIFIED DIMENSIONS ARE IN INCHES INTERPRET PER ANSI Y 14.5M-1994		NAME		DATE		TITLE				
		CE JL1183		19DEC23		WB-K210-B-T1				
		RW RY1002		07/19/2023						
		AD YMENG		07/31/2023						
		RE RY1002		07/31/2023						
ECN 40185539CMO				SCALE						DOCUMENT NO.
				1:20		WB-K210-B-T1				
SIZE		Auth Group		INSL		MODEL		DRAWING		SHEET 1 OF 2
C		 		VERSION		STATUS		REVISION		
				00		RE		A		
				00		IN		A		

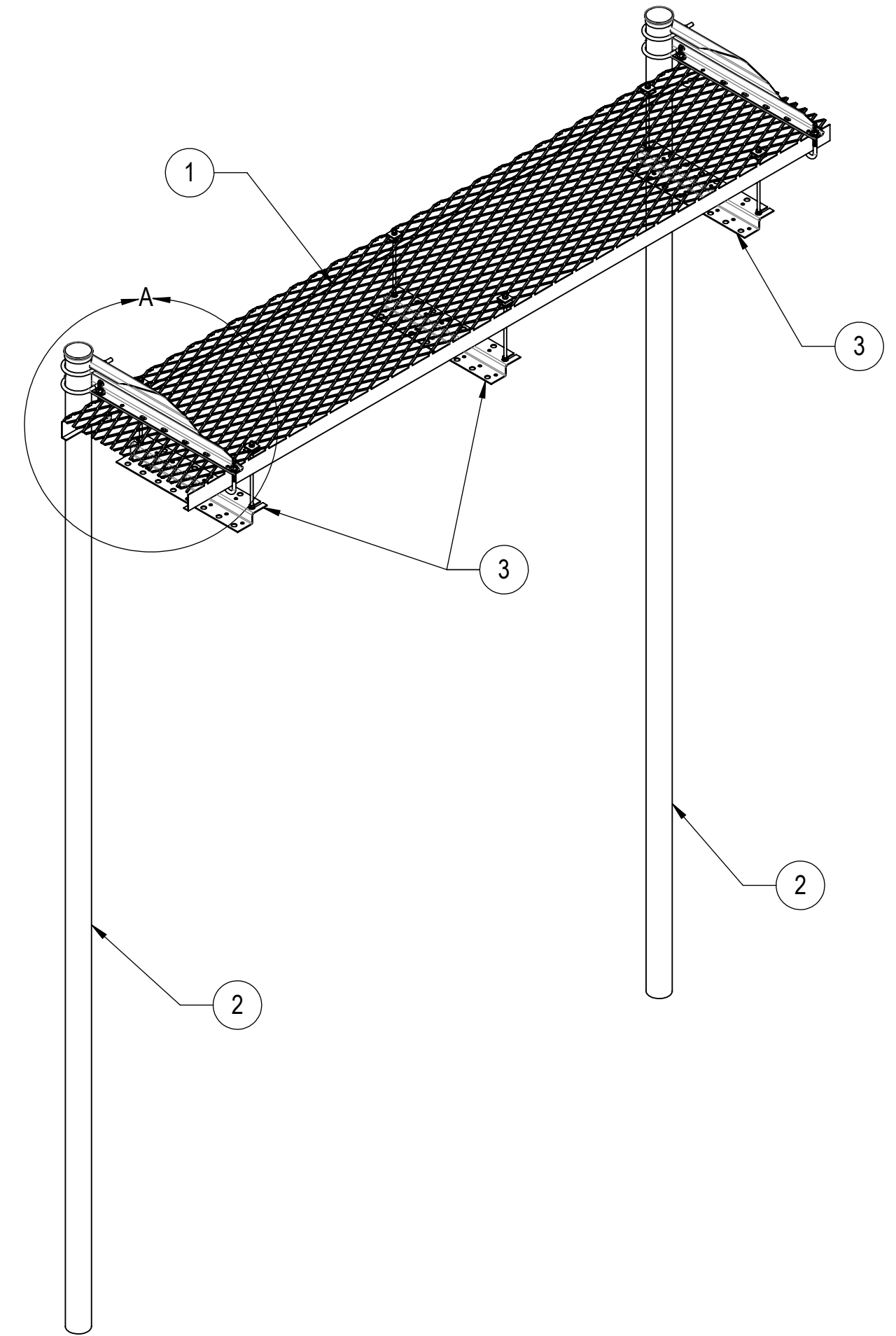
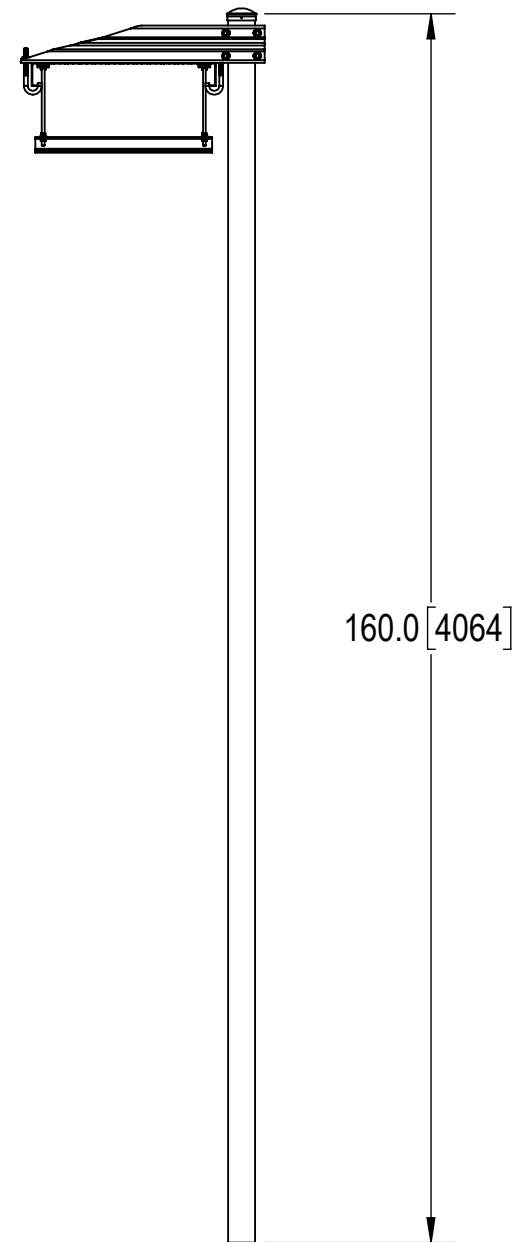
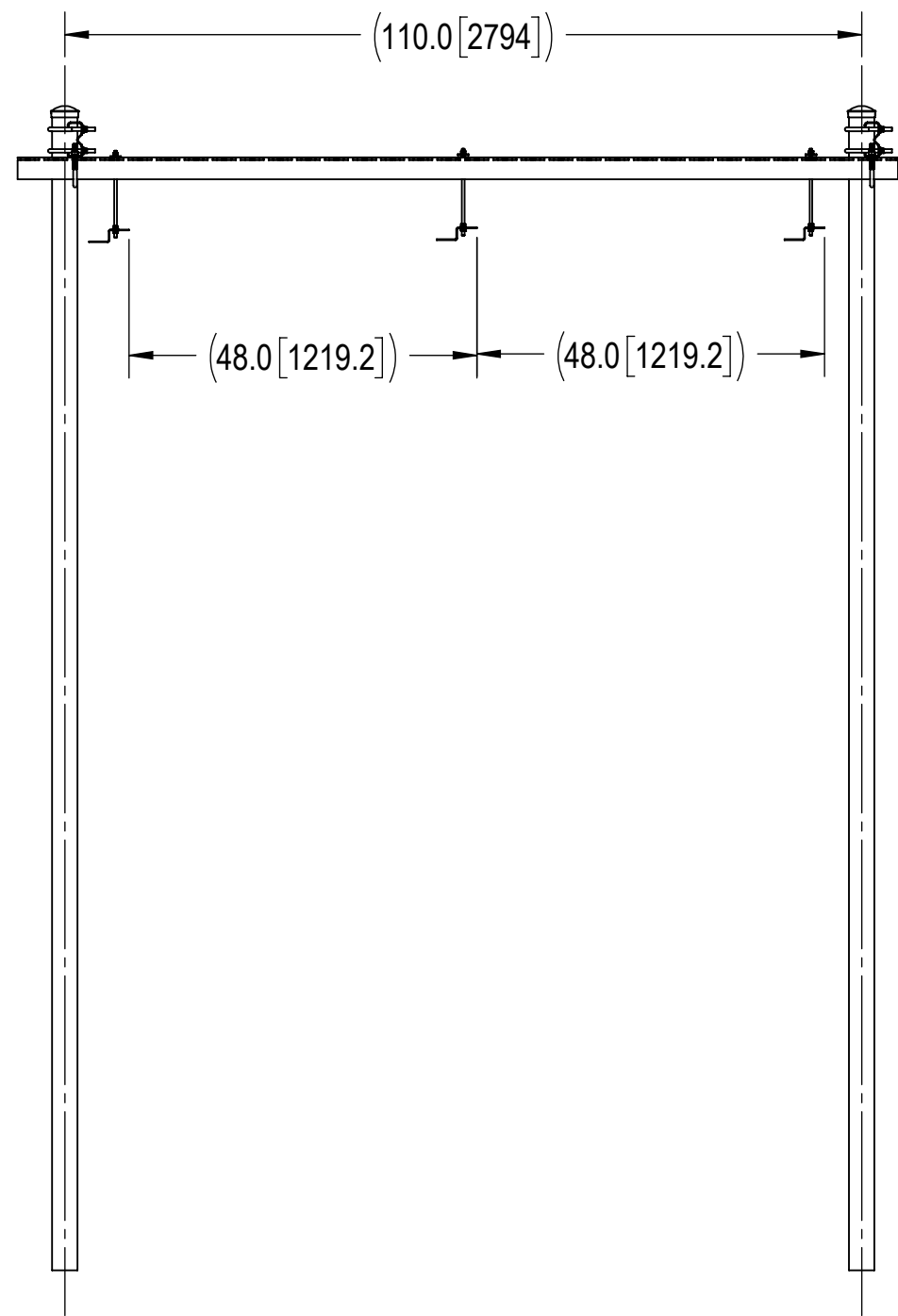
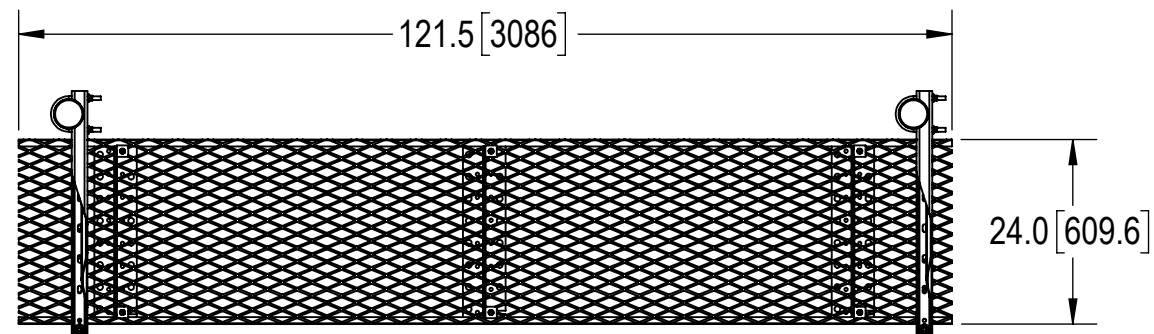
DENSITY		lbs/in³
MASS	206.42	lbs
VOLUME	726.67	in³
SURFACE AREA	13217.24	in²
HEIGHT	160.5"	
LENGTH	120.0"	
WIDTH	31.8"	

4

3

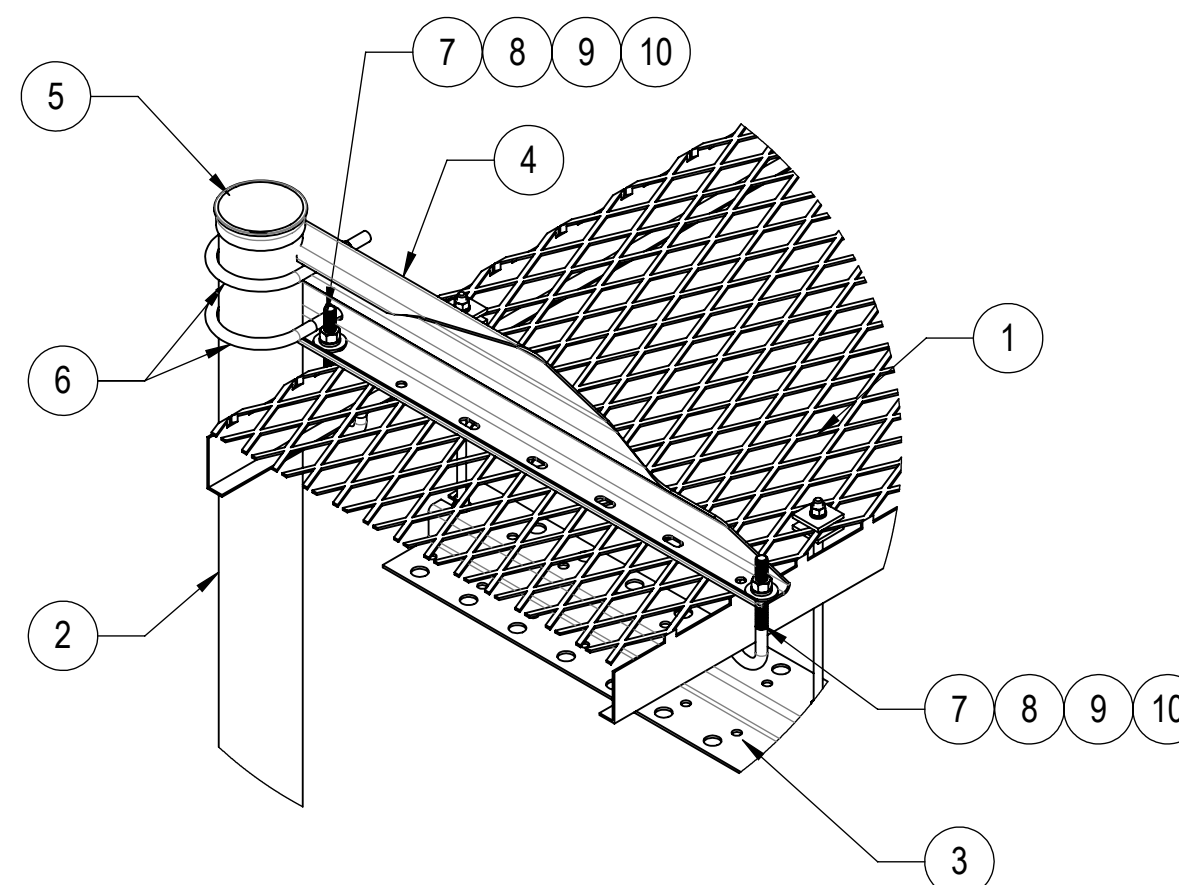
2

1



COMPONENT PART NUMBERS PROVIDED FOR ASSEMBLY PURPOSES;
INDIVIDUAL COMPONENTS MAY BE SHIPPED AS PARTS WITHIN AN INCLUDED KIT

ITEM	PART NO.	DESCRIPTION	QTY.	WEIGHT	NOTE NO.
1	WB-CY210	SAFETY GRATED WAVEGUIDE BRIDGE CHANNEL	1	49.84 LBS	
2	MF-130	3.5" O.D. X 13'-4" DIRECT BURIAL PIPE COLUMN	2	57.97 LBS	
3	MT-357-24	TRAPEZE KIT	3	6.49 LBS	
4	WBLB24308	24" WAVEGUIDE BRIDGE SUPPORT BRACKET	2	7.14 LBS	
5	PC-034	PIPE CAP 3-1/2"	2	0.66 LBS	
6	GUB-4356	1/2" X 3-5/8" X 6" GALV U-BOLT	4	0.81 LBS	
7	WBJB6	1/2" J-BOLT	4	0.41 LBS	
8	GWF-04	1/2" GALV FLAT WASHER	4	0.04 LBS	
9	GWL-04	1/2" GALV LOCK WASHER	4	0.01 LBS	
10	GN-04	1/2" GALV HEX NUT	4	0.04 LBS	



DETAIL A
SCALE 1 : 8

© 2023 CommScope, Inc. Confidential

COMMSCOPE, INC. OF NORTH CAROLINA				
TITLE ICE-BRIDGE, 24"W X 10'L, BUR-POST				
SIZE C	SCALE 1:20	DOCUMENT NO. WB-K210-B-T1		
		DRAWING		SHEET
		VERSION	STATUS	REVISION
		00	IN	A
				SHEET 2 OF 2