

4

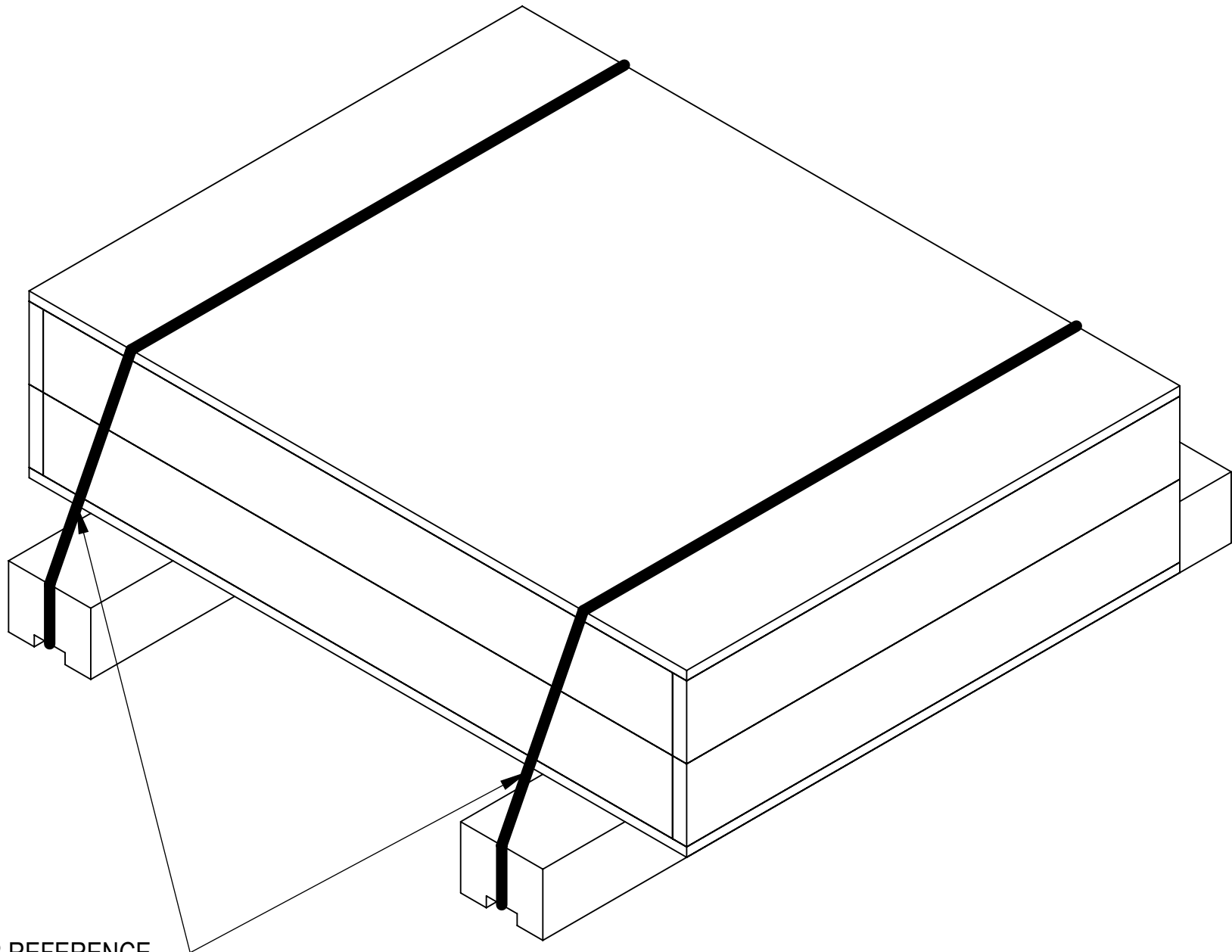
3

2

1

- 1.0 GENERAL NOTES
 - 1.1 ALL METRIC DIMENSIONS ARE IN BRACKETS [X. X]
 - 1.2 FOR PATENT INFO: <https://www.cs-pat.com>
- 2.0 DESIGN NOTES
 - 2.1 ANY HAZARDS OR OBSTRUCTIONS TO THE CLIMBING FACILITY AND SAFETY CLIMB MUST BE IDENTIFIED PRIOR TO INSTALLING THE APPURTENANCE. ADDITIONAL PRODUCTS MAY BE REQUIRED TO MAINTAIN THE INTEGRITY OF THE SAFETY CLIMB. DURING INSTALLATION, TEMPORARY AND/OR PERMANENT PRECAUTIONARY MEASURES SHOULD BE TAKEN TO PRESERVE THE CLIMBING FACILITY AND/OR SAFETY CLIMB
 - 2.2 INSTALL SO AS TO NOT UNNECESSARILY OBSTRUCT THE CLIMBING PATH OR CLIMBING FACILITY
 - 2.3 THREADED RODS CAN BE CUT BACK POST INSTALLATION TO PREVENT OBSTRUCTION AS PER REQUIREMENTS OF TOWER OWNER
 - 2.4 REVIEWED FOR USE WITH A MINIMUM POLE DIAMETER OF 10" WITH WALL THICKNESS OF 3/16" AND A YIELD STRENGTH OF 36 KSI. FOR USE ON THINNER MATERIAL REQUIRES ADDITIONAL ENGINEERING REVIEW
- 3.0 MANUFACTURING/SPECIAL REQUIREMENTS
 - 3.1 TIGHTEN ALL BOLTS SECURING FLAT PLATES BY THE TURN-OF-NUT METHOD. TIGHTEN ALL U-BOLTS USING TURN-OF-NUT METHOD WITH ATTENTION TO LEAVE EQUAL DISTANCE AND EQUAL FORCE ON EACH LEG OF THE U-BOLT
- 4.0 TEST
- 5.0 PACKAGING
 - 5.1 PACKAGING SHALL MEET COMMSCOPE REQUIREMENTS PER DOCUMENT IS-PL-3005
 - 5.2 PRINTED DOCUMENT TO BE PLACED INSIDE POLYBAG AND THEN IN SHIPPING CONTAINER
 - 5.3 EXTRA HARDWARE MAYBE SUPPLIED, BAGGED AND SHIPPED

REVISIONS			
REV.	DESCRIPTION	DATE	APPROVED
A	INITIAL RELEASE	JL1183 14MAR23	YW1045 40163038CMO



STRAP FOR REFERENCE

NOTE: -MAXIMUM LOAD PER EYEBOLT = 1000 LBS
 -MAXIMUM LOAD PER MOUNT = 3000 LBS
 -REVIEWED FOR USE WITH A MINIMUM POLE DIAMETER OF 10" WITH WALL THICKNESS OF 3/16" AND A YIELD STRENGTH OF 36 KSI. FOR USE ON THINNER MATERIAL REQUIRES ADDITIONAL ENGINEERING REVIEW

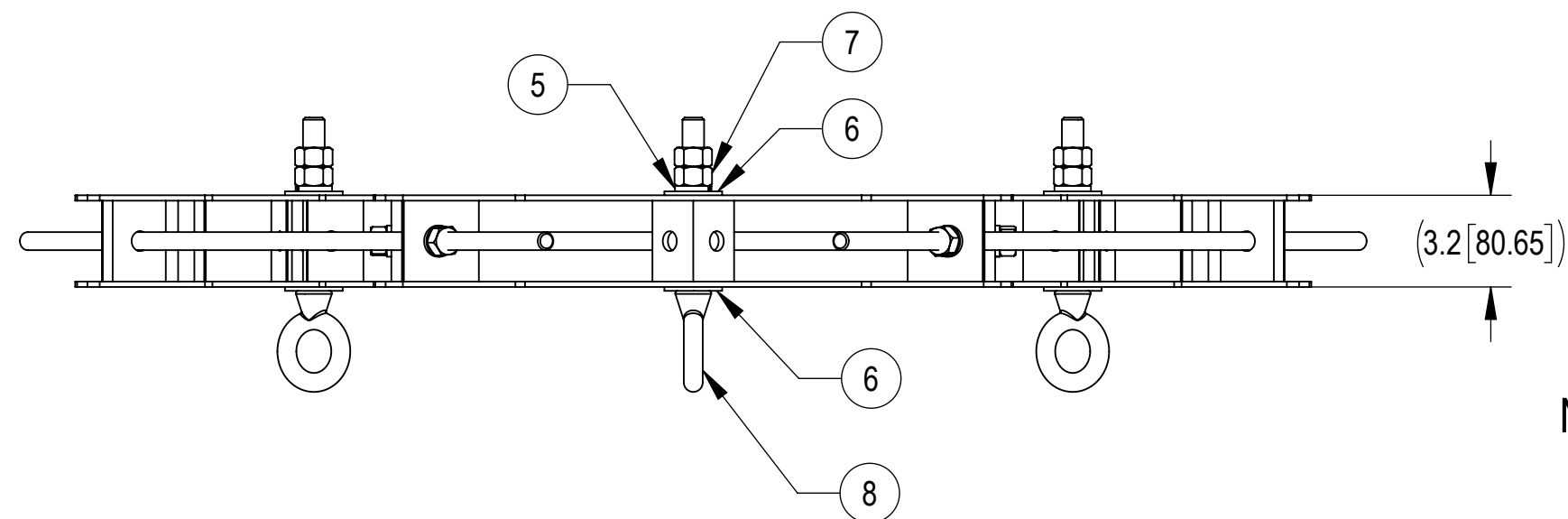
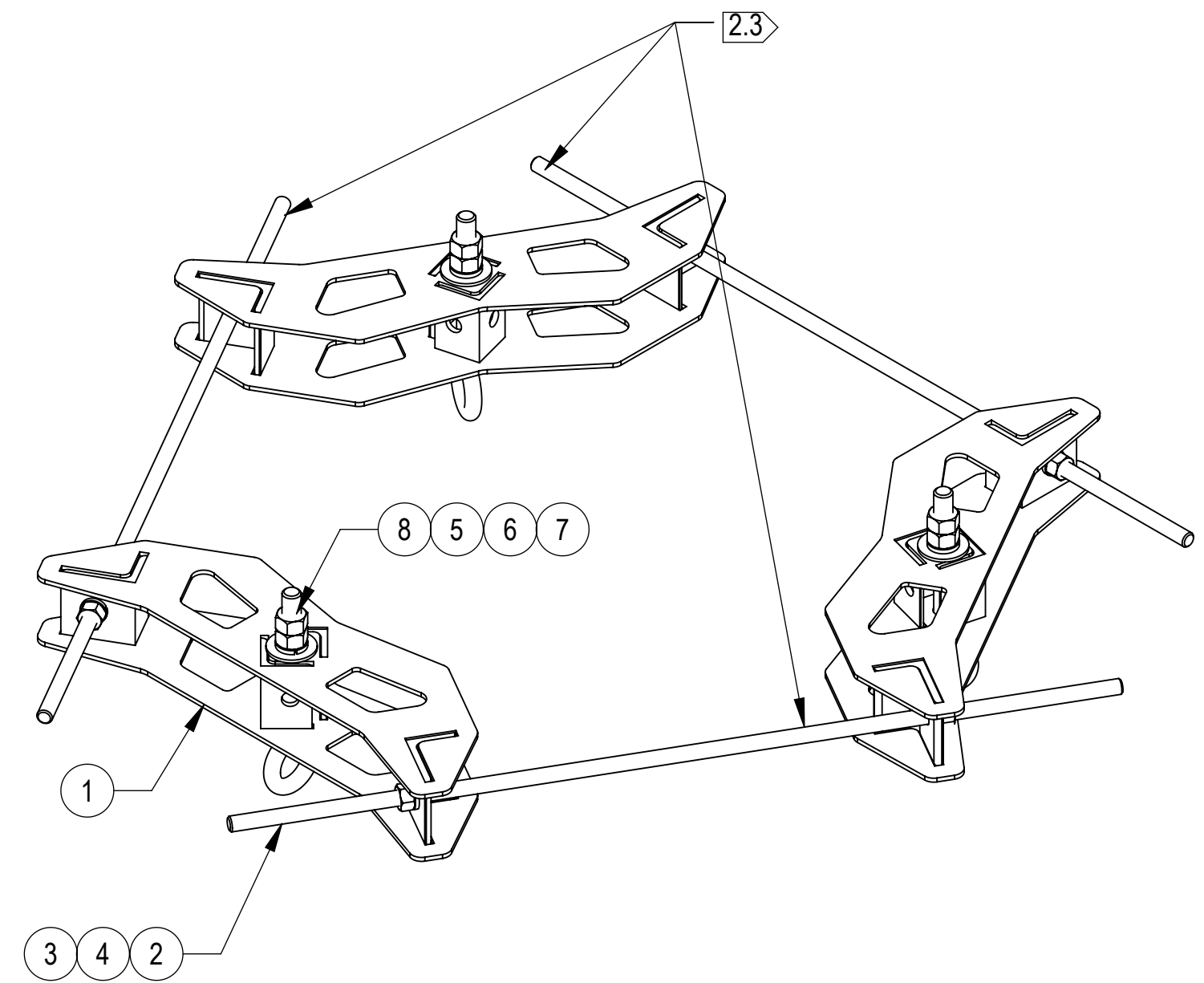
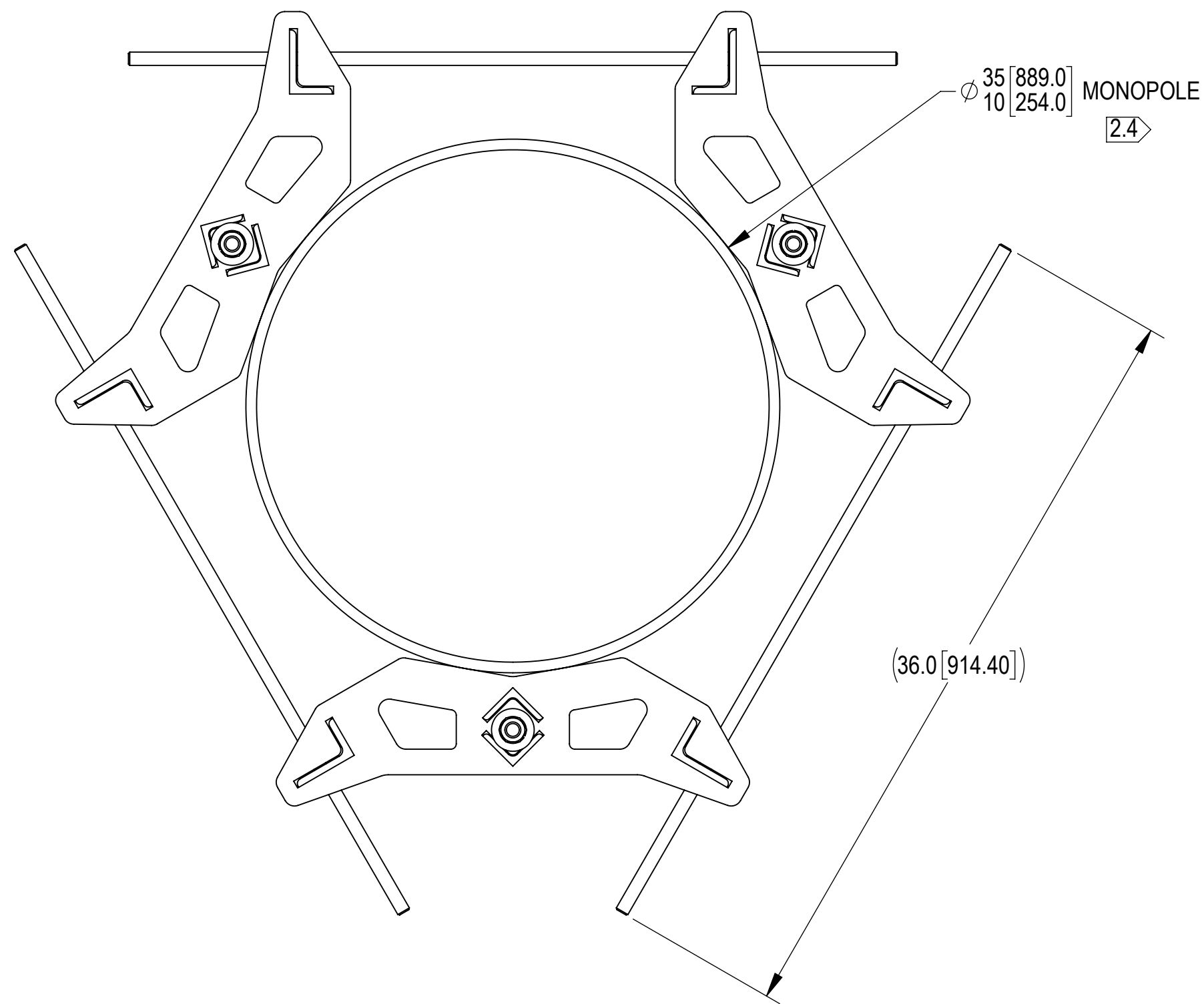
COMMSCOPE, INC. OF NORTH CAROLINA											
TOLERANCES					SAP MATERIAL MASTER						
0 PLACE .X[X] ± 0.2[6.3]		2 PLACE .XX[X] ± 0.06[1.5]			860669616-1035						
1 PLACE .X[X] ± 0.12[3.0]		ANGLES ± 2°									
FINISH					MATERIAL						
UNLESS OTHERWISE SPECIFIED DIMENSIONS ARE IN INCHES INTERPRET PER ANSI Y 14.5M-1994	NAME		DATE		GRIP ANCHOR, MONOPOLE, 10"-35"						
	CE	JL1183	14MAR23								
	RW	YMENG	01/28/2024								
	AD	JL1183	01/28/2024								
	RE	YMENG	01/28/2024								
ECN 40163038CMO					SCALE 1:8		DOCUMENT NO. 860669616-1035				
SIZE		Auth Group		INSL		MODEL			DRAWING		
C						VERSION	STATUS	REVISION	VERSION	STATUS	REVISION
						00	RE	A	00	RE	A
DENSITY		49.5		lbs/in³		SHEET 1 OF 3					
MASS		49.5		lbs							
VOLUME		1114.2		in³							
SURFACE AREA		5628.2		in²							
HEIGHT		3.2[80.7]		in							
LENGTH		36.0[914.4]		in							
WIDTH		36.0[914.4]		in							

4

3

2

1



NOTE: -MAXIMUM LOAD PER EYEBOLT = 1000 LBS
 -MAXIMUM LOAD PER MOUNT = 3000 LBS
 -REVIEWED FOR USE WITH A MINIMUM POLE DIAMETER OF 10" WITH WALL THICKNESS OF 3/16" AND A YIELD STRENGTH OF 36 KSI. FOR USE ON THINNER MATERIAL REQUIRES ADDITIONAL ENGINEERING REVIEW

COMPONENT PART NUMBERS PROVIDED FOR ASSEMBLY PURPOSES;
 INDIVIDUAL COMPONENTS MAY BE SHIPPED AS PARTS WITHIN AN INCLUDED KIT.

ITEM NO.	PART NUMBER	DESCRIPTION	QTY.	WEIGHT	NOTE NO.
1	MTC8606-02-00	HG ANCHOR, MONOPOLE MOUNT WELDMENT	3	12.45 LBS	
2	MT-382-36	5/8" X 36" GALV THREADED ROD	3	3.11 LBS	
3	GN-05	5/8" GALV HEX NUT	6	0.08 LBS	
4	GWL-05	5/8" GALV LOCK WASHER	6	0.03 LBS	
5	GWL-06	3/4" GALV LOCK WASHER	3	0.04 LBS	
6	GWF-06	3/4" GALV FLAT WASHER	6	0.10 LBS	
7	GN-06	3/4" GALV HEX NUT	3	0.15 LBS	
8	9674-4	BOLT,EYE,3/4X6,STL,GALV	3	0.20 LBS	

COMMSCOPE, INC. OF NORTH CAROLINA					
TITLE GRIP ANCHOR, MONOPOLE, 10"-35"					
SIZE C	SCALE 1:10	DOCUMENT NO. 860669616-1035			
		DRAWING			SHEET 2 OF 3
		VERSION 00	STATUS RE	REVISION A	

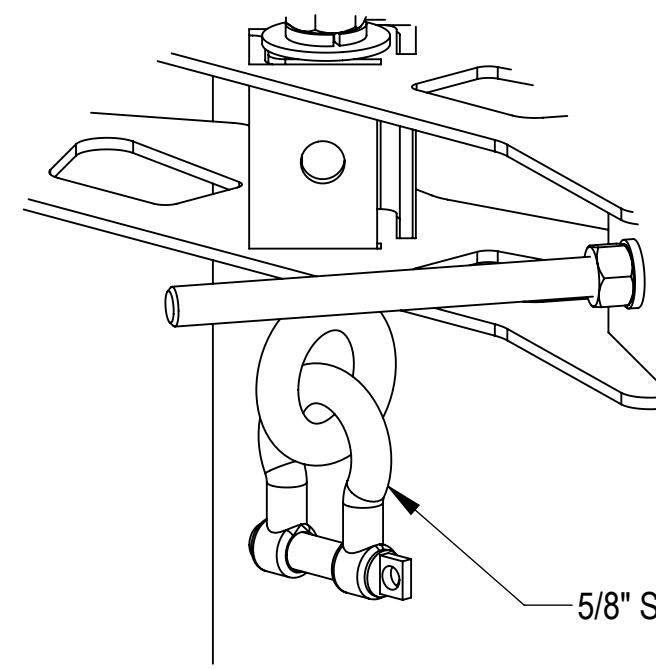
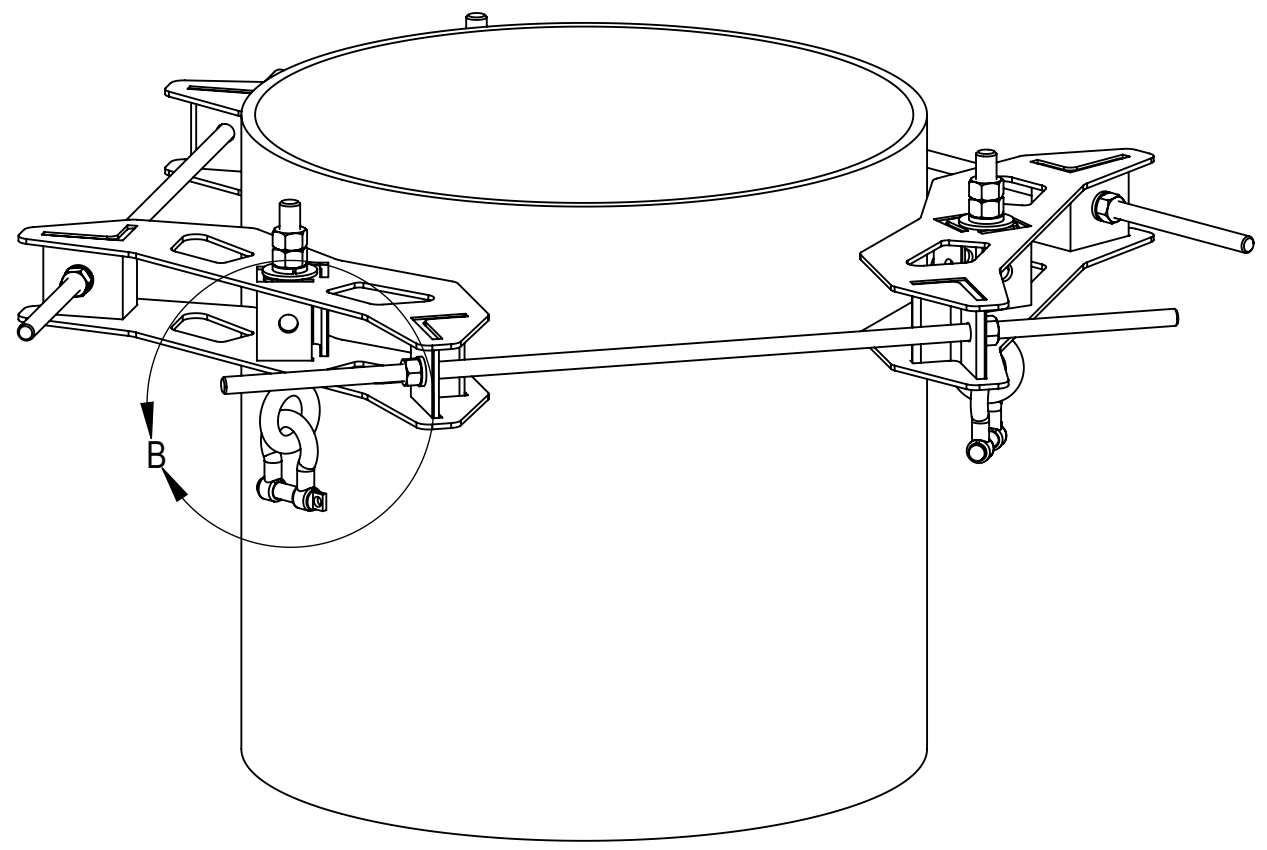
4

3

2

1

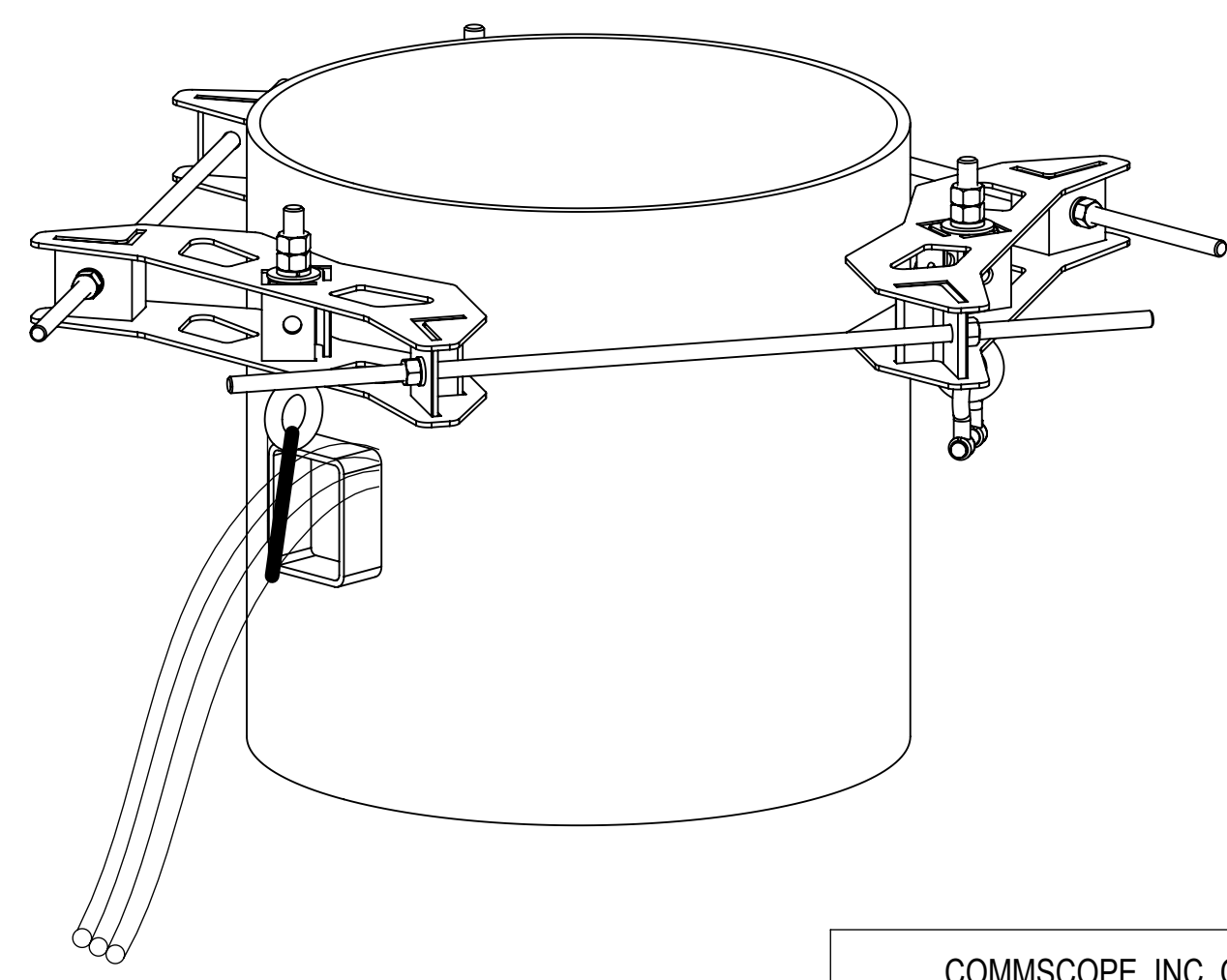
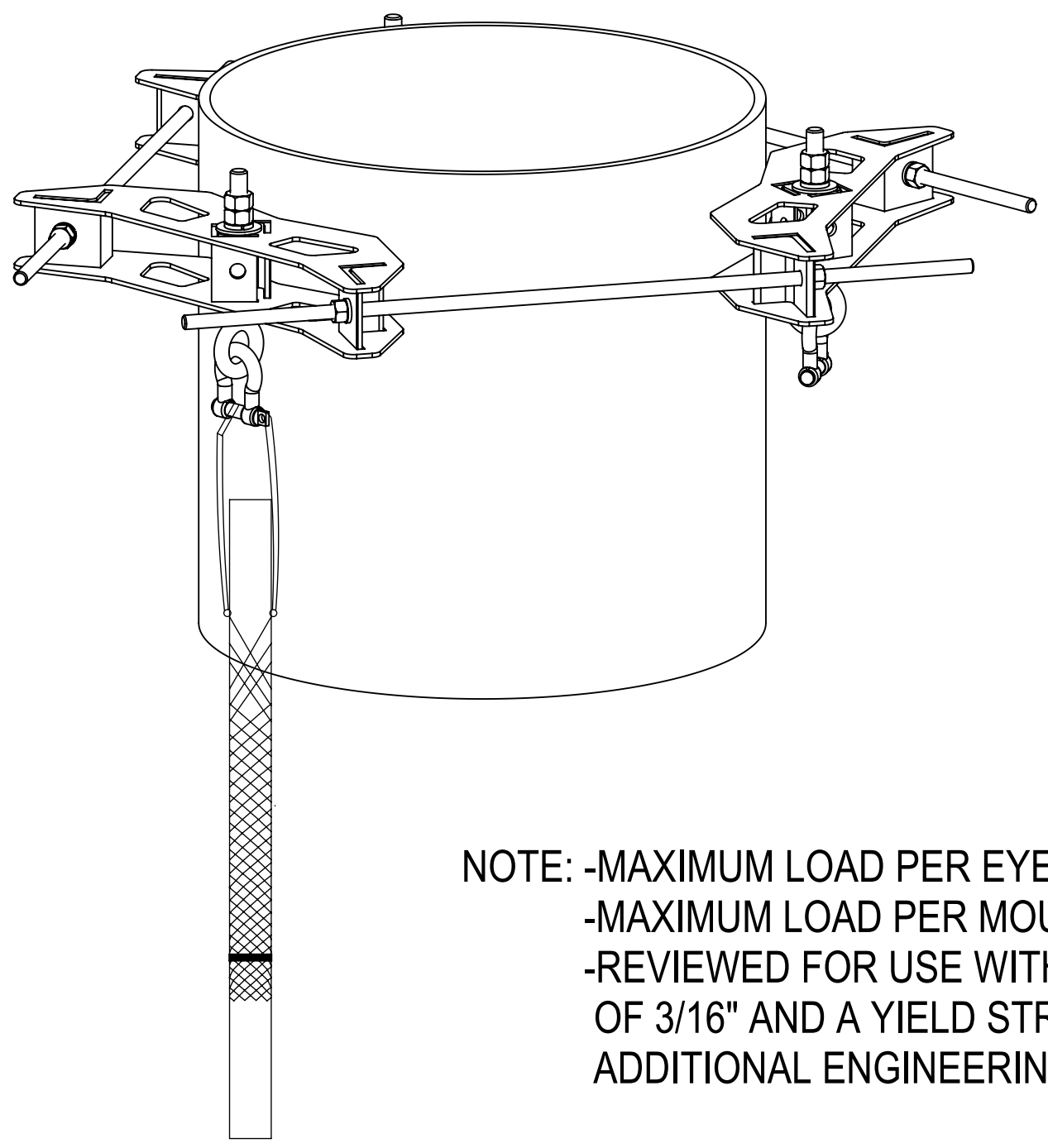
OPTIONAL ACCESSORIES (PURCHASED SEPARATELY)



5/8" SHACKLE SHOWN FOR REFERENCE

DETAIL B
SCALE 1 : 3

SCHEMATIC DIAGRAM OF CABLE FIXING METHOD



NOTE: -MAXIMUM LOAD PER EYEBOLT = 1000 LBS
 -MAXIMUM LOAD PER MOUNT = 3000 LBS
 -REVIEWED FOR USE WITH A MINIMUM POLE DIAMETER OF 10" WITH WALL THICKNESS OF 3/16" AND A YIELD STRENGTH OF 36 KSI. FOR USE ON THINNER MATERIAL REQUIRES ADDITIONAL ENGINEERING REVIEW

COMMSCOPE, INC. OF NORTH CAROLINA				
TITLE GRIP ANCHOR, MONOPOLE, 10"-35"				
SIZE C	SCALE 1:10	DOCUMENT NO. 860669616-1035		
		DRAWING		SHEET
		VERSION	STATUS	REVISION
		00	RE	A
				3 OF 3

4

3

2

1