

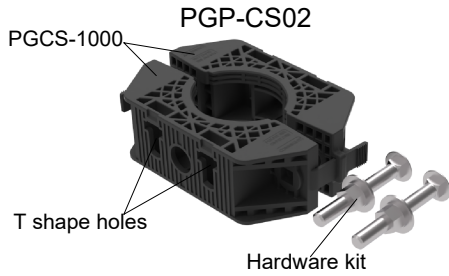
## PGP-CS04, PGP-CS08, PGP-CS10, PGP-CS16 and PGP-CS18

### PGP Polymer Cable Management System

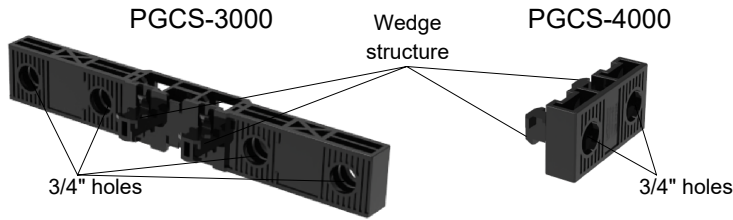
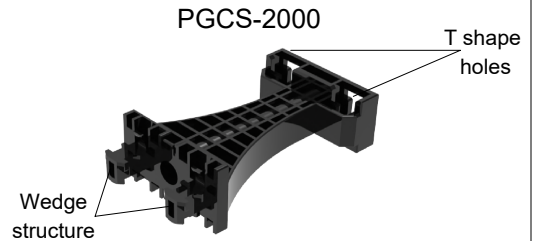
Bulletin 7859822

Revision C page 1 of 2

### Product Parts



The clamp is combined by two PGCS-1000 and hardware kit. Can assembled on 2-3/8" or 2-7/8" pipe with an applied torque of 15 Nm.



Panels: For installing Snap-in cable hangers

**NOTE:**

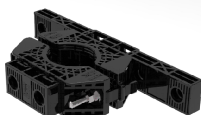
1. Please use the recommended torque to install the clamp.
2. This product only use for Gen1 & Gen2 Snap-in hangers.

### Recommended Configurations

PGP-CS04



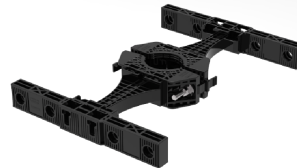
PGP-CS08



PGP-CS10



PGP-CS16

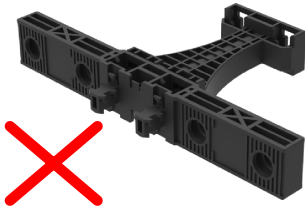


PGP-CS18



### ⚠ WARNING

Improper installation may cause structural damage or difficulty in disassembly.



Quantities of parts used in different configurations

	PGP-CS02	PGCS-2000	PGCS-3000	PGCS-4000
PGP-CS04	1	X	X	2
PGP-CS08	1	X	1	1
PGP-CS10	1	1	1	1
PGP-CS16	1	2	2	X
PGP-CS18	1	1	2	2

**NOTE:**

1. Can only be applied to jump cable.
2. Stack up to two hangers in each 3/4" hole.
3. Can not use the two holes near the clamp on the inside of the panel. (PGP-CS08 and PGP-CS18)

CommScope  
3642 E US Highway 70, Claremont, NC 28610 USA  
(828) 324-2200 (800) 982-1708  
www.commscope.com

Customer Service 24 hours  
North America: +1-800-255-1479 (toll free)  
Any country: +1-779-435-6500  
email: acicustomersupportcenter@commscope.com

Notice: CommScope disclaims any liability or responsibility for the results of improper or unsafe installation, inspection, maintenance, or removal practices.  
Aviso: CommScope no acepta ninguna obligación ni responsabilidad como resultado de prácticas incorrectas o peligrosas de instalación, inspección, mantenimiento o retiro.  
Avis : CommScope décline toute responsabilité pour les conséquences de procédures d'installation, d'inspection, d'entretien ou de retrait incorrectes ou dangereuses.  
Hinweis: CommScope lehnt jede Haftung oder Verantwortung für Schäden ab, die aufgrund unsachgemäßer Installation, Überprüfung, Wartung oder Demontage auftreten.  
Atenção: A CommScope abdica do direito de toda responsabilidade pelos resultados de práticas inadequadas e sem segurança de instalação, inspeção, manutenção ou remoção.  
Avvertenza: CommScope declina eventuali responsabilità derivanti dall'esecuzione di procedure di installazione, ispezione, manutenzione e smontaggio improprie o poco sicure.

注意: CommScope 公司申明對於不恰當或不安全的安裝、檢驗、維修或拆卸操作所導致的後果不負責任 何義務和責任

© May, 2020 CommScope

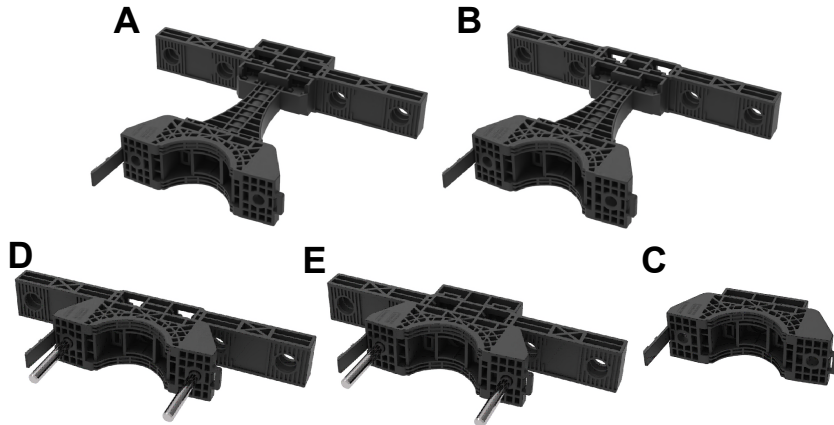
## PGP-CS04, PGP-CS08, PGP-CS10, PGP-CS16 and PGP-CS18

### PGP Polymer Cable Management System

Bulletin 7859822

Revision C page 2 of 2

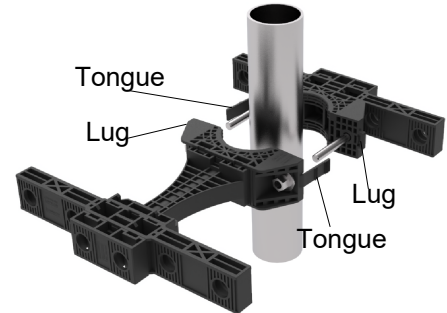
First install the components on both sides of the Clamp, then install the two assembled clamps to the 2-3/8" or 2-7/8" pipe with bolts.



C+C is combined into PGP-CS04. C+D is combined into PGP-CS08. B+C is combined into PGP-CS10. B+B is combined into PGP-CS16. A+E is combined into PGP-CS18.

**NOTE:**

When clamp (PGCS-1000) and long panel (PGCS-3000) are directly installed, two bolts need to be pre-inserted into the mounting holes. (D and E in the picture above)



**Installation of Clamp:** Fix clamp to the pipe, then insert the tongues on both sides of the clamp into the corresponding lugs.

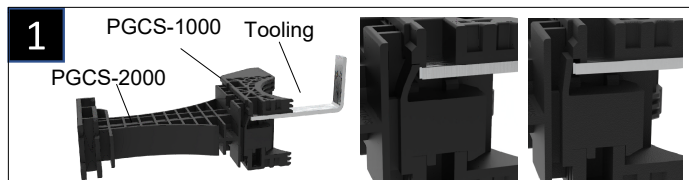
**Disassembly of Clamp:** Hold the tongues on both sides of the clamp. Use both hands to pull the clamp halves apart by removing the tongue from the lug.

**! WARNING**

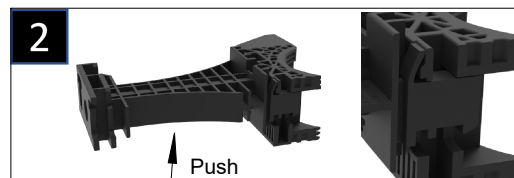
Do not tighten the clamp to the pipe with bolts alone to prevent it from deforming and causing other components to fail to be installed.

**Installation of wedge structure:** Fully insert the wedge structure into the T shape holes, slide the wedge structure down, after hear a "click" to indicate that the installation is complete.

**Disassembly of wedge structure:**



Use tooling as shown in the figure to push back the beam, then tilt up PGCS-2000 so that the beam snaps onto the mounting surface. And follow the same method to push out the other beam.



Hold the PGCS-1000, push out the PGCS-2000 as shown in the figure, and then pull it out to complete the disassembly.

CommScope  
3642 E US Highway 70, Claremont, NC 28610 USA  
(828) 324-2200 (800) 982-1708  
www.commscope.com

Customer Service 24 hours  
North America: +1-800-255-1479 (toll free)  
Any country: +1-779-435-6500  
email: acicustomersupportcenter@commscope.com

Notice: CommScope disclaims any liability or responsibility for the results of improper or unsafe installation, inspection, maintenance, or removal practices.  
Aviso: CommScope no acepta ninguna obligación ni responsabilidad como resultado de prácticas incorrectas o peligrosas de instalación, inspección, mantenimiento o retiro.  
Avis : CommScope décline toute responsabilité pour les conséquences de procédures d'installation, d'inspection, d'entretien ou de retrait incorrectes ou dangereuses.  
Hinweis: CommScope lehnt jede Haftung oder Verantwortung für Schäden ab, die aufgrund unsachgemäßer Installation, Überprüfung, Wartung oder Demontage auftreten.  
Atenção: A CommScope abdica do direito de toda responsabilidade pelos resultados de práticas inadequadas e sem segurança de instalação, inspeção, manutenção ou remoção.  
Avvertenza: CommScope declina eventuali responsabilità derivanti dall'esecuzione di procedure di installazione, ispezione, manutenzione e smontaggio improprie o poco sicure.

注意: CommScope 公司申明對於不恰當或不安全的安裝、檢驗、維修或拆卸操作所導致的後果不負責任 何義務和責任

© May, 2020 CommScope