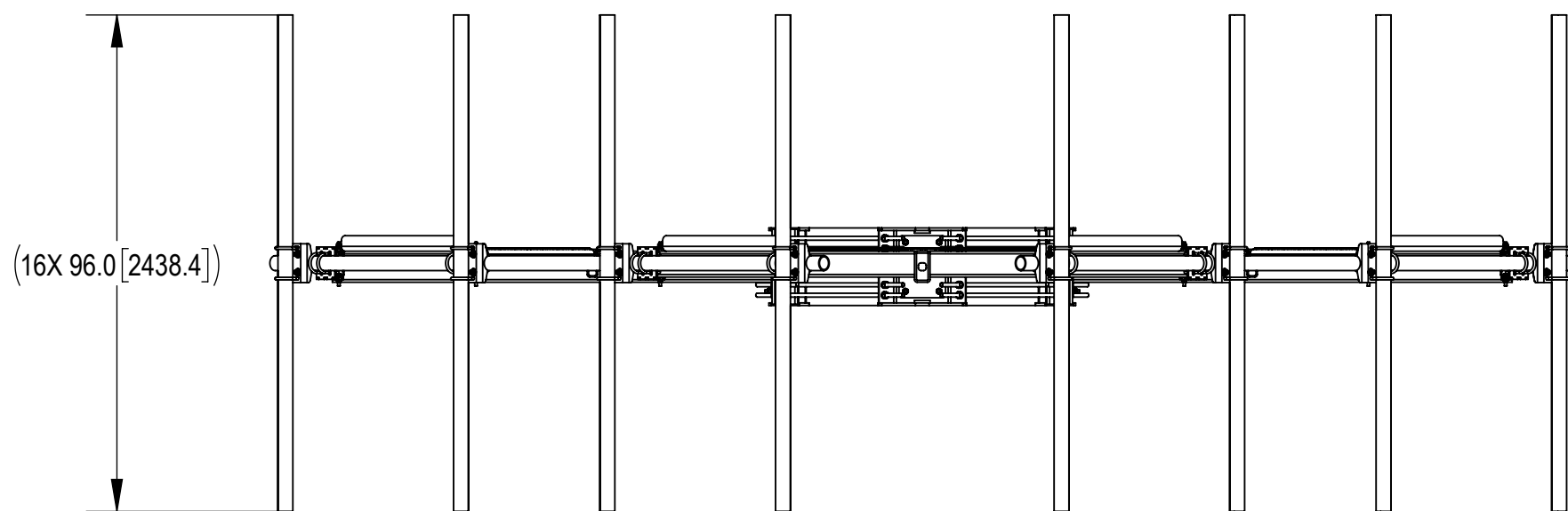
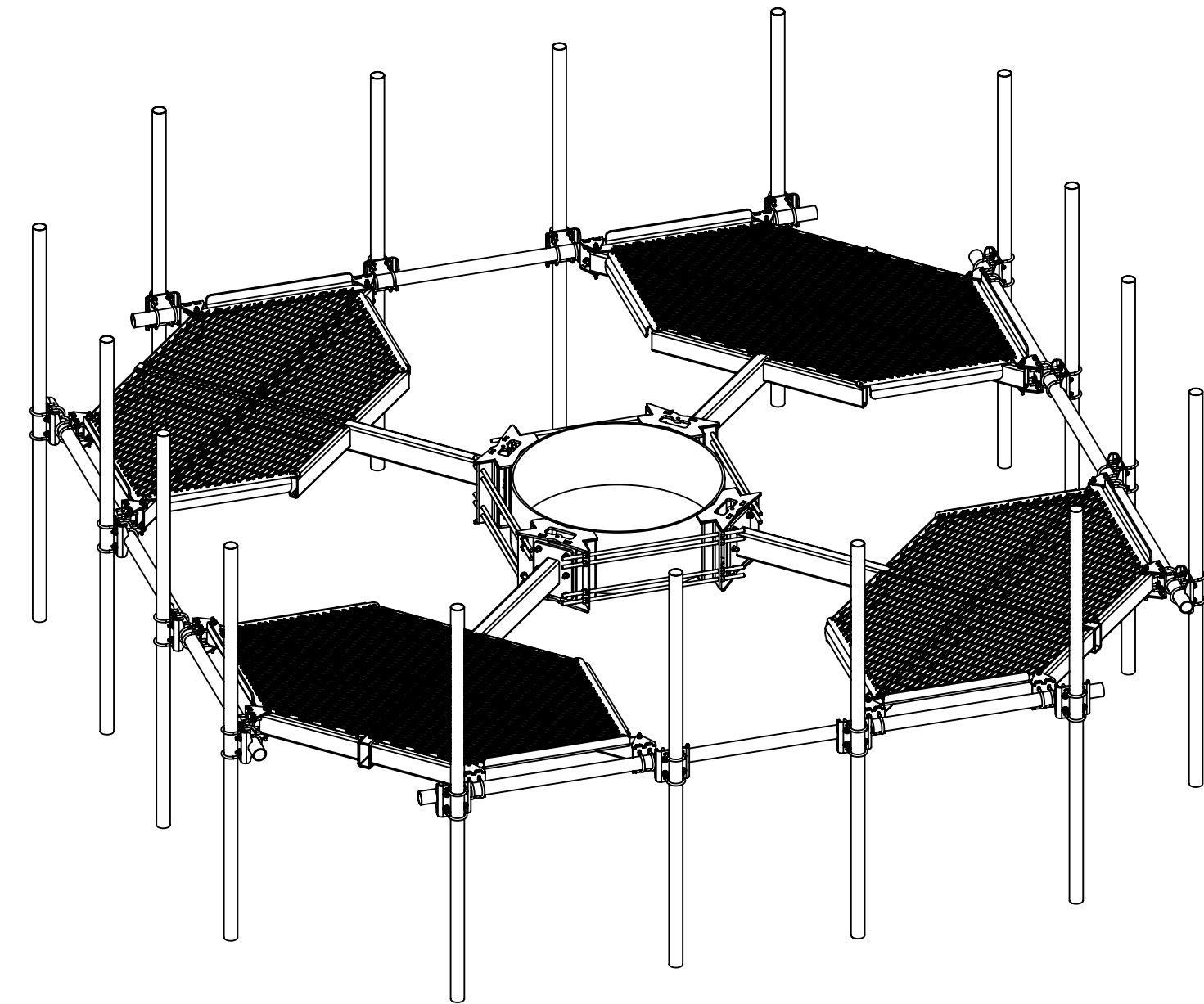
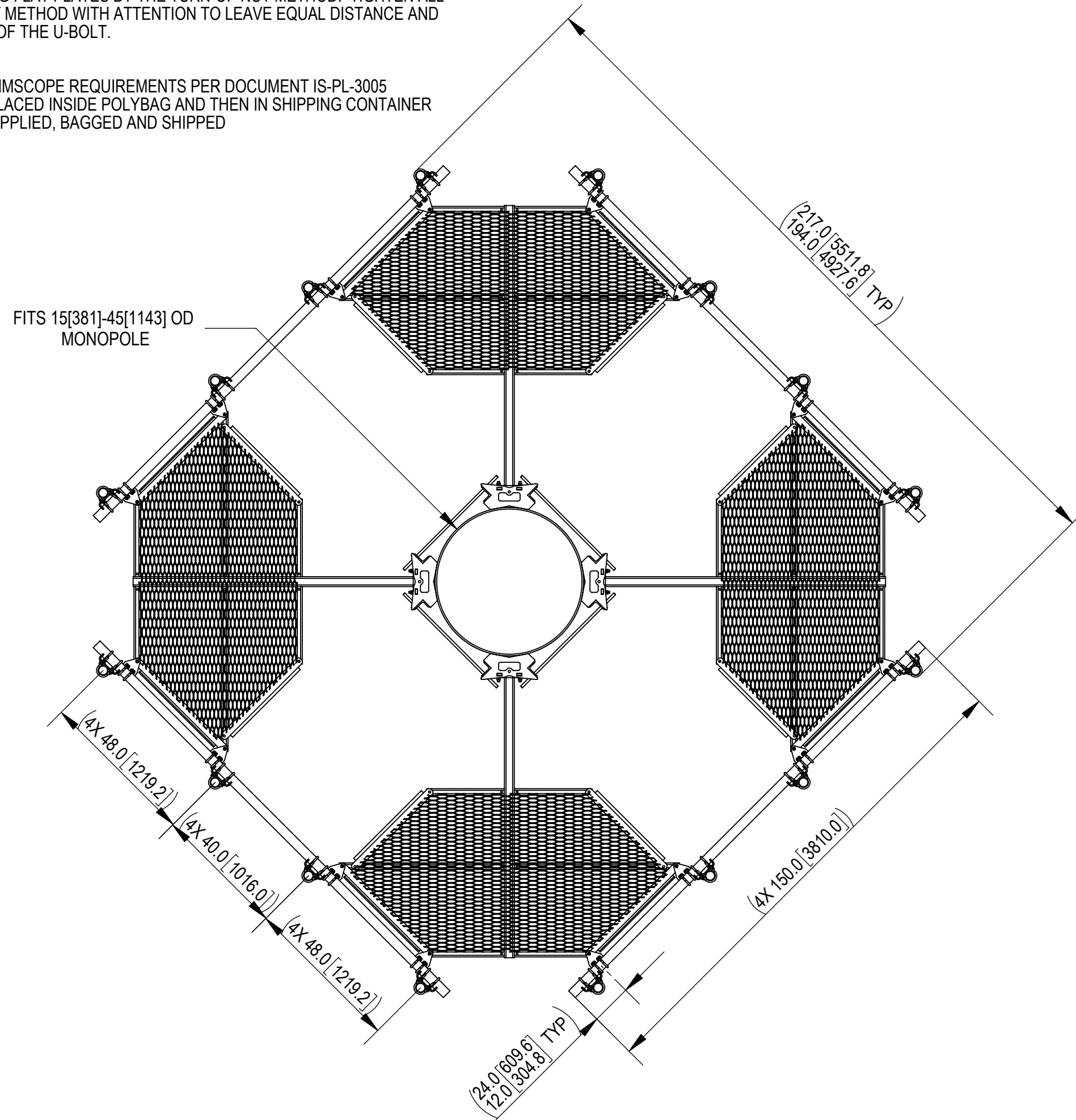


- 1.0 GENERAL NOTES
  - 1.1 ALL METRIC DIMENSIONS ARE IN BRACKETS [X.X]
  - 1.2 FOR PATENT INFO: <https://www.cs-pat.com>
- 2.0 DESIGN NOTES
  - 2.1 USE DRAWING MC-RMHD-1545-4 TO ASSEMBLE RING MOUNT
  - 2.2 ANY HAZARDS OR OBSTRUCTIONS TO THE CLIMBING FACILITY AND SAFETY CLIMB MUST BE IDENTIFIED PRIOR TO INSTALLING THE APPURTENANCE. ADDITIONAL PRODUCTS MAY BE REQUIRED TO MAINTAIN THE INTEGRITY OF THE SAFETY CLIMB. DURING INSTALLATION, TEMPORARY AND/OR PERMANENT PRECAUTIONARY MEASURES SHOULD BE TAKEN TO PRESERVE THE CLIMBING FACILITY AND/OR SAFETY CLIMB.
- 3.0 MANUFACTURING/SPECIAL REQUIREMENTS
  - 3.1 TIGHTEN ALL BOLTS SECURING FLAT PLATES BY THE TURN-OF-NUT METHOD. TIGHTEN ALL U-BOLTS USING TURN-OF-NUT METHOD WITH ATTENTION TO LEAVE EQUAL DISTANCE AND EQUAL FORCE ON EACH LEG OF THE U-BOLT.
- 4.0 TEST
- 5.0 PACKAGING
  - 5.1 PACKAGING SHALL MEET COMMSCOPE REQUIREMENTS PER DOCUMENT IS-PL-3005
  - 5.2 PRINTED DOCUMENT TO BE PLACED INSIDE POLYBAG AND THEN IN SHIPPING CONTAINER
  - 5.3 EXTRA HARDWARE MAYBE SUPPLIED, BAGGED AND SHIPPED

REVISIONS			
REV.	DESCRIPTION	DATE	APPROVED
A	INITIAL RELEASE	YMENG 31AUG21	BA1025 14658
B	MCPM-2005-00 WAS MCPM-2000-00, MT-219N-H WAS MT21703 KIT, GB-0524A WAS GB-0522A, ALL U-BOLTS CHANGED TO GUB-4352	JYANG4 19SEP22	BA1025 40156827CMO



DENSITY	3341.83	lbs/in <sup>3</sup>
MASS	3341.83	lbs
VOLUME	12874.14	in <sup>3</sup>
SURFACE AREA	109774.53	in <sup>2</sup>
HEIGHT	96[2438]	
LENGTH	217[5512]	
WIDTH	217[5512]	

**COMMSCOPE, INC. OF NORTH CAROLINA**

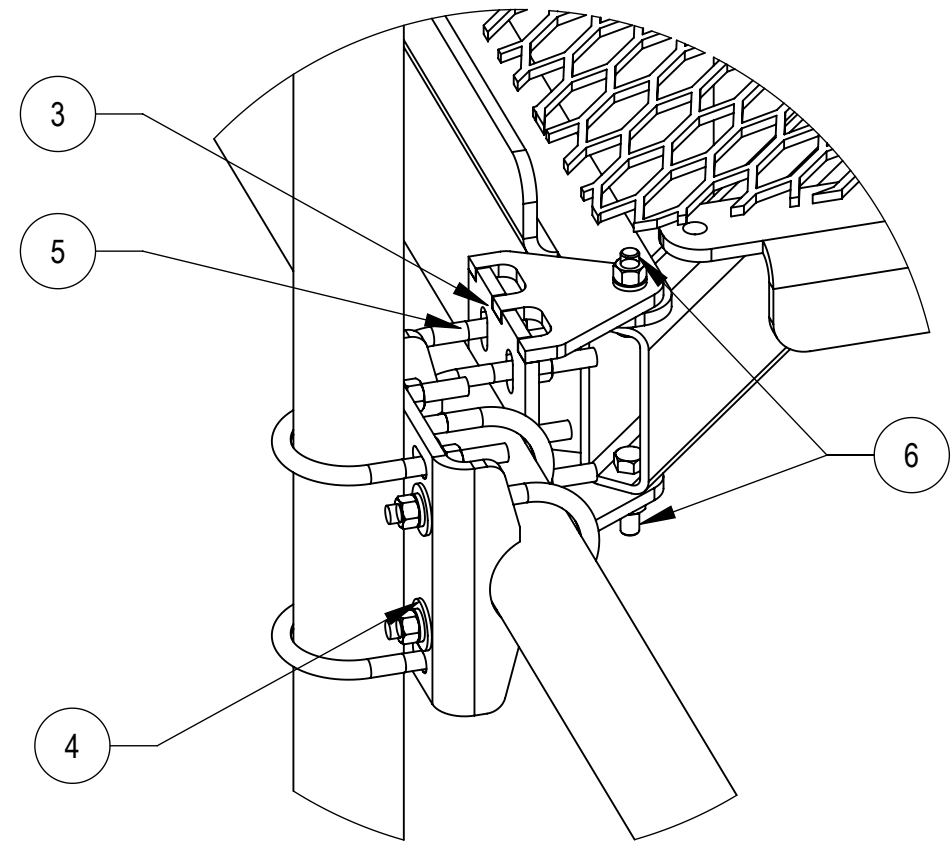
TOLERANCES		SAP MATERIAL MASTER	
1 PLACE .X[X] ± 0.25[6.3]	3 PLACE .XXX[X] ± 0.060[1.5]	<b>MC-PM12M4-16-96</b>	
2 PLACE .XX[X] ± 0.12[3.0]	ANGLES ± 2°		
FINISH		MATERIAL	
UNLESS OTHERWISE SPECIFIED DIMENSIONS ARE IN INCHES INTERPRET PER ANSI Y 14.5M-1994	NAME	DATE	TITLE
	CE YMENG	08/31/2021	<b>ATLAS4, 12' FP,(16)2.88" X96"AP</b>
	RW YMENG	10/09/2022	
	AD BA1025	10/13/2022	
	RE YMENG	01/11/2023	
ECN 40156827CMO			
SCALE	DOCUMENT NO.		
<b>1:48</b>	<b>MC-PM12M4-16-96</b>		
SIZE	Auth Group	INSL	MODEL
<b>C</b>			
VERSION	STATUS	REVISION	DRAWING
01	RE	B	VERSION STATUS REVISION
			01 RE B
			SHEET
			1 OF 7

4

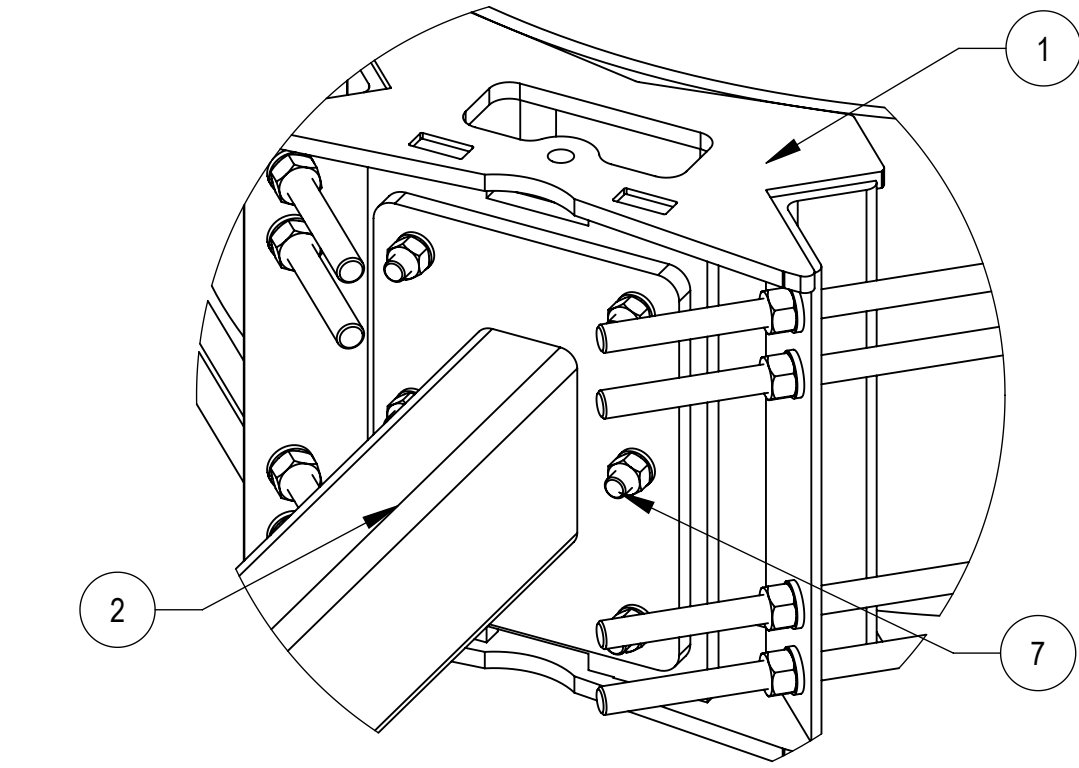
3

2

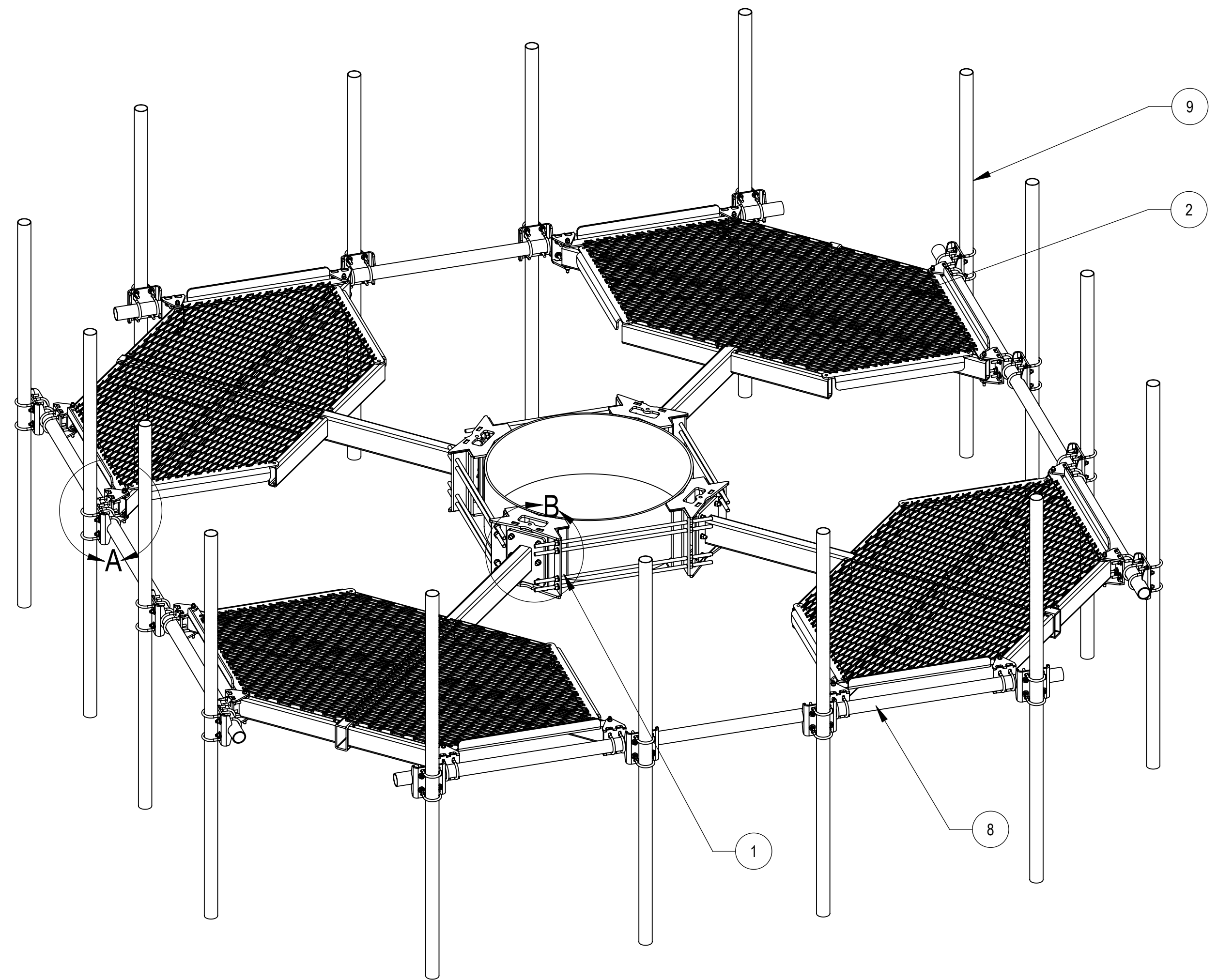
1



**DETAIL A**  
SCALE 1 : 5



**DETAIL B**  
SCALE 1 : 5



COMPONENT PART NUMBERS PROVIDED FOR ASSEMBLY PURPOSES;  
INDIVIDUAL COMPONENTS MAY BE SHIPPED AS PARTS WITHIN AN INCLUDED KIT.

ITEM	PART NO.	DESCRIPTION	QTY.	WEIGHT	NOTE NO.
1	MC-RMHD-1545-4	4 SECTOR RING MOUNT, 15"-45" POLE	1	386.57LBS	
2	MC-PM4-2000	WELDMENT, CO-LOCATION PLATFORM	4	477.02 LBS	
3	MCPM-2005-00	BRACKET, PIPE MOUNTING	16	5.47 LBS	△B
4	MT-219N-H	SADDLE PIPE MOUNTING KIT, 2-7/8" OD	16	10.61 LBS	△B
5	GUB-4352	1/2" X 3" X 5-1/4" GALV U-BOLT	32	0.71 LBS	△B
6	GB-04205	1/2" X 2" GALV BOLT KIT	32	0.16 LBS	
7	GB-0524A	5/8" X 2-1/2" GALV BOLT KIT (A325)	24	0.30 LBS	△B
8	MT-546-150	PIPE, 2.875"OD X 150"	4	72.67 LBS	
9	MT54696120	PIPE, 2.875"OD X 96"	16	28.35 LBS	

COMMSCOPE, INC. OF NORTH CAROLINA				
TITLE ATLAS4, 12' FP,(16)2.88" X96"AP				
SIZE C	SCALE 1:48	DOCUMENT NO. MC-PM12M4-16-96		
DRAWING		VERSION	STATUS	REVISION
		01	RE	B
				SHEET 2 OF 7

© 2022 CommScope, Inc. Confidential

4

3

2

1

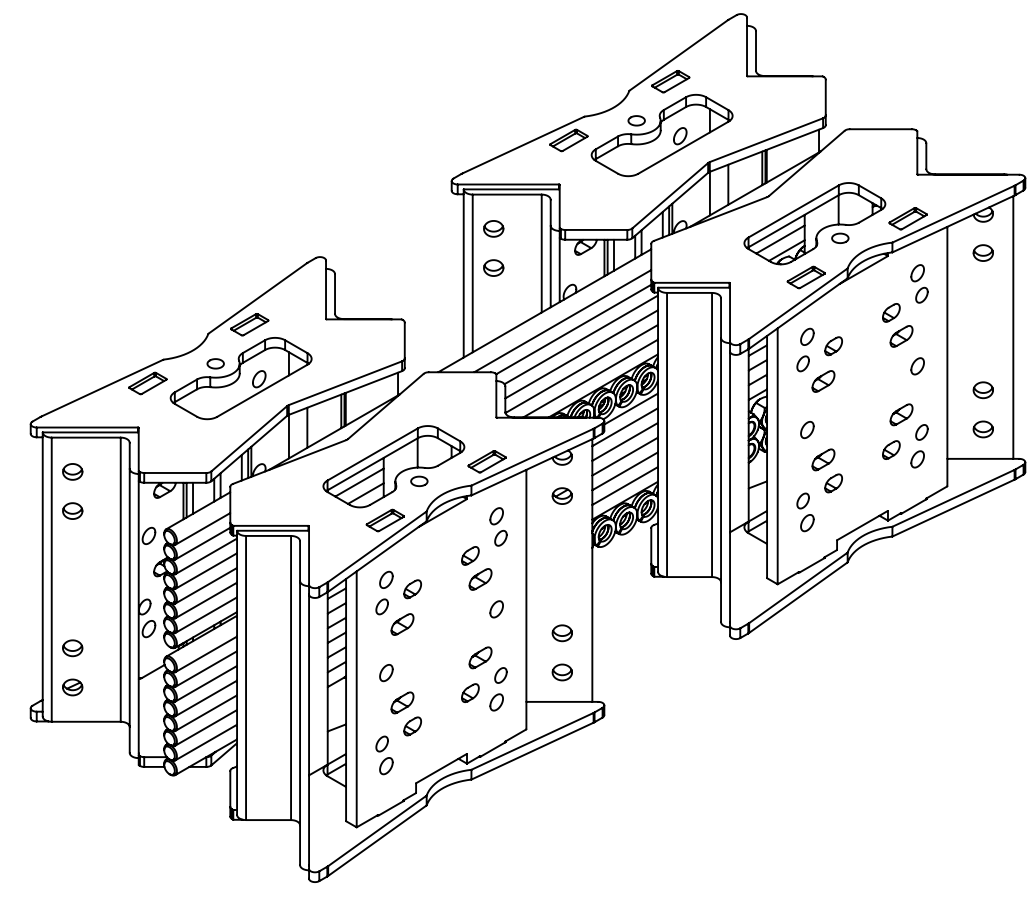
4

3

2

1

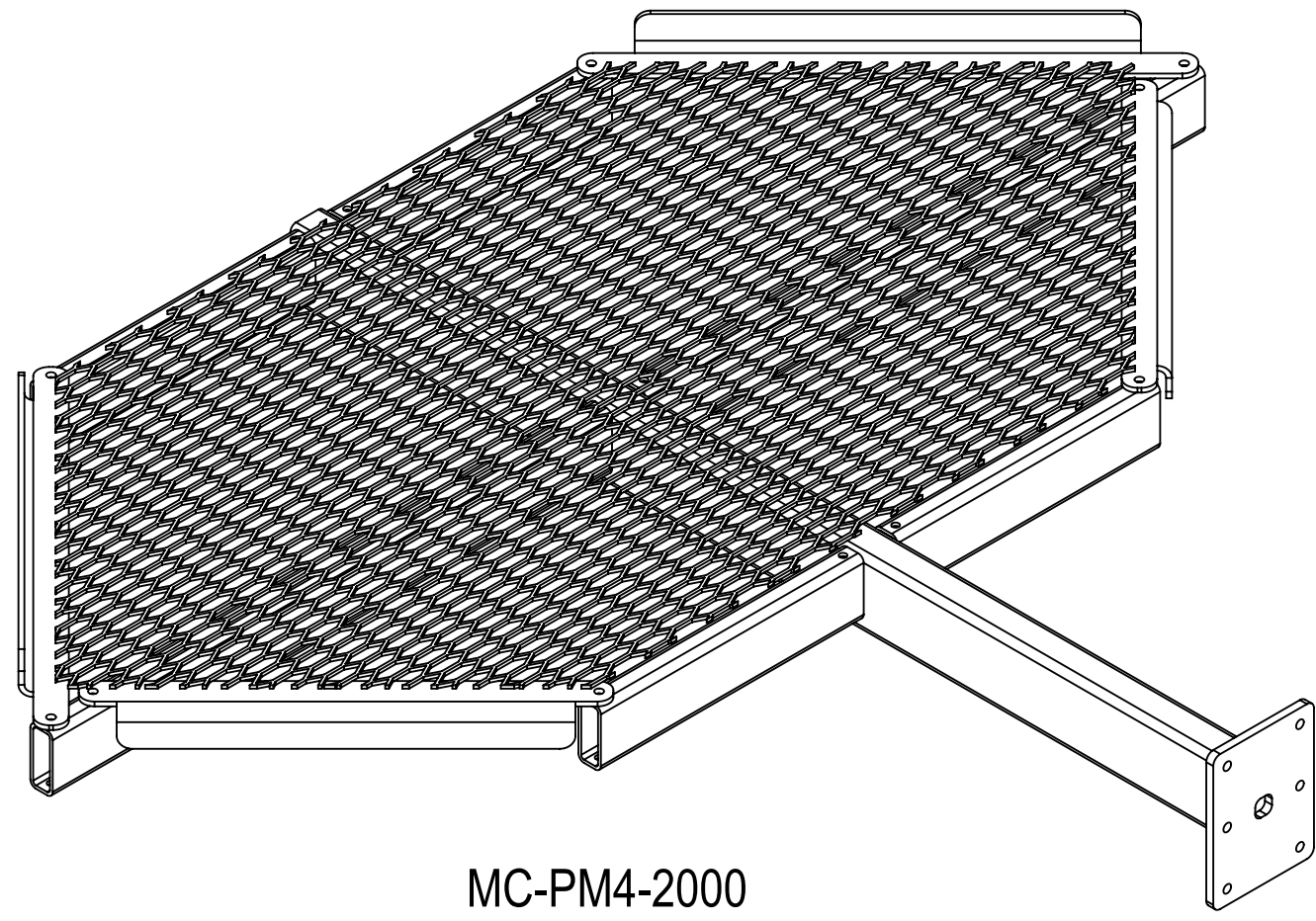
1X



MC-RMHD-1545-4

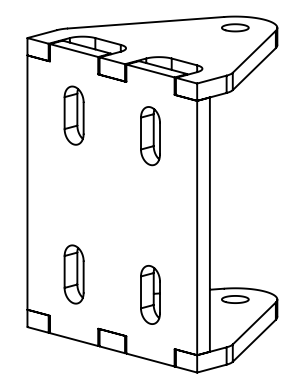
(INCLUDING 1X RMHD1545-4-1000, 16X MT38440, 32X GWL-06 AND 32X GN-06 )

4X



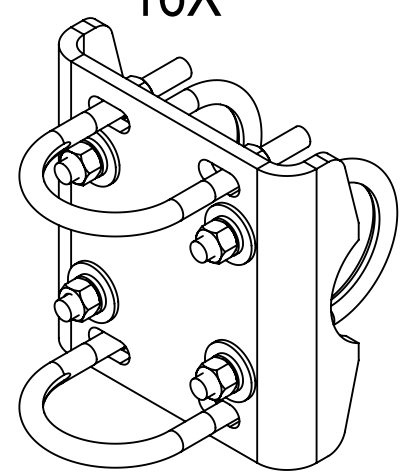
MC-PM4-2000

16X



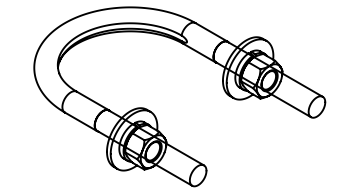
MCPM-2005-00

16X



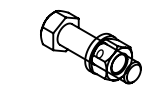
MT-219N-H

32X



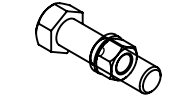
GUB-4352

32X



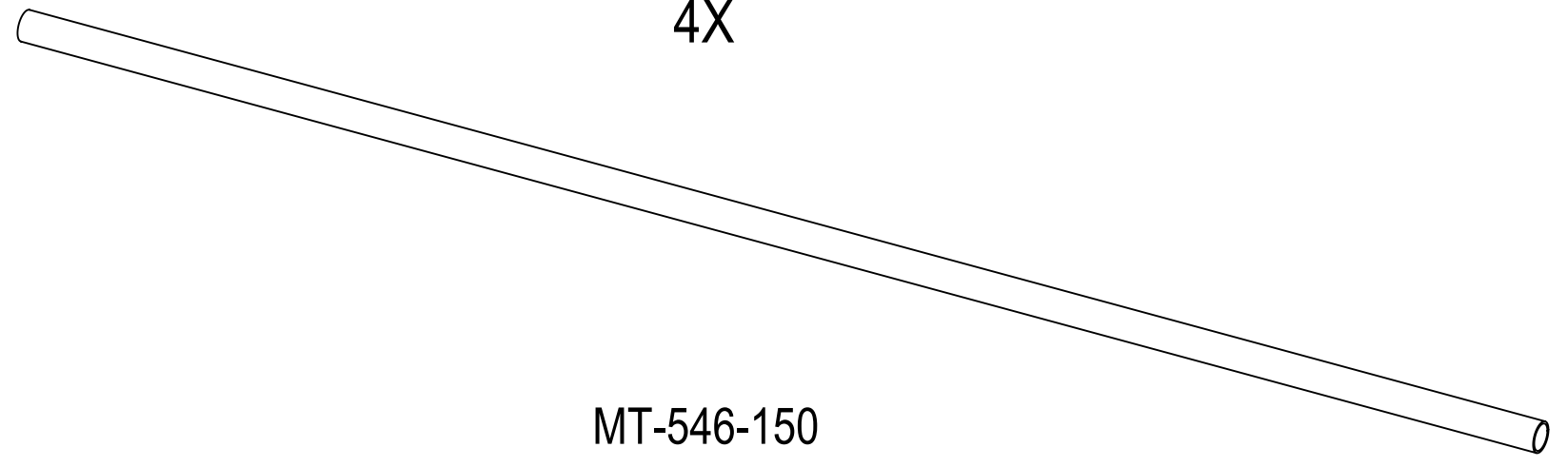
GB-04205

24X



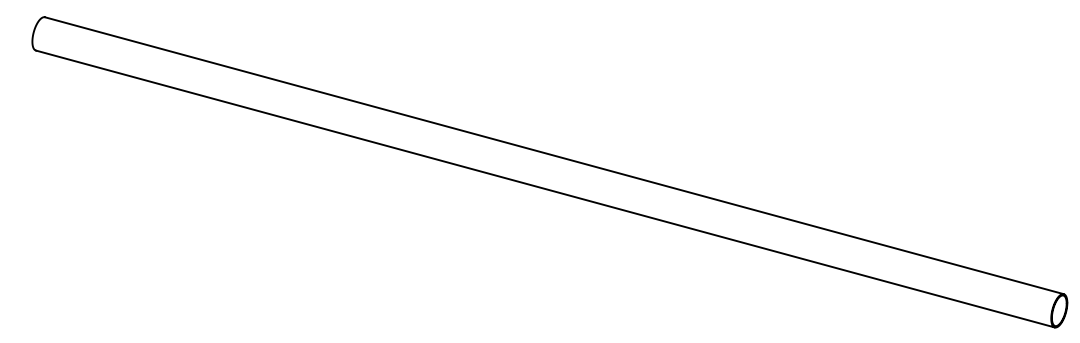
GB-0524A

4X



MT-546-150

16X



MT54696120

COMMSCOPE, INC. OF NORTH CAROLINA				
TITLE ATLAS4, 12' FP,(16)2.88" X96"AP				
SIZE C	SCALE 1:8	DOCUMENT NO. MC-PM12M4-16-96		
		DRAWING		SHEET
		VERSION 01	STATUS RE	REVISION B
				3 OF 7

4

3

2

1

D

D

C

C

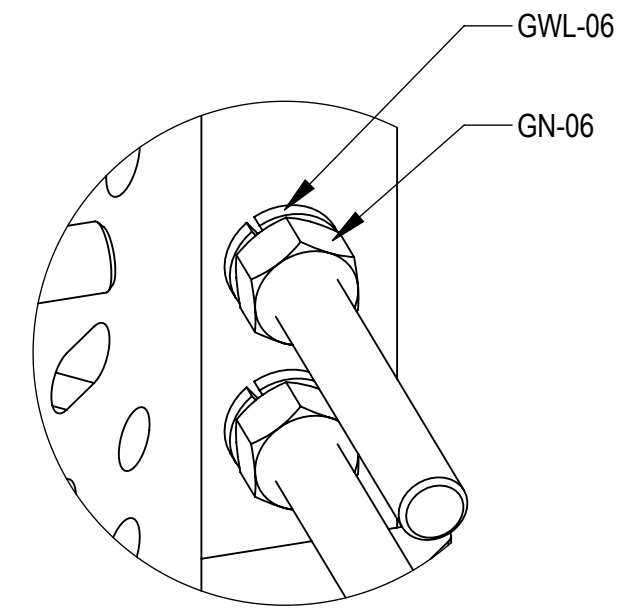
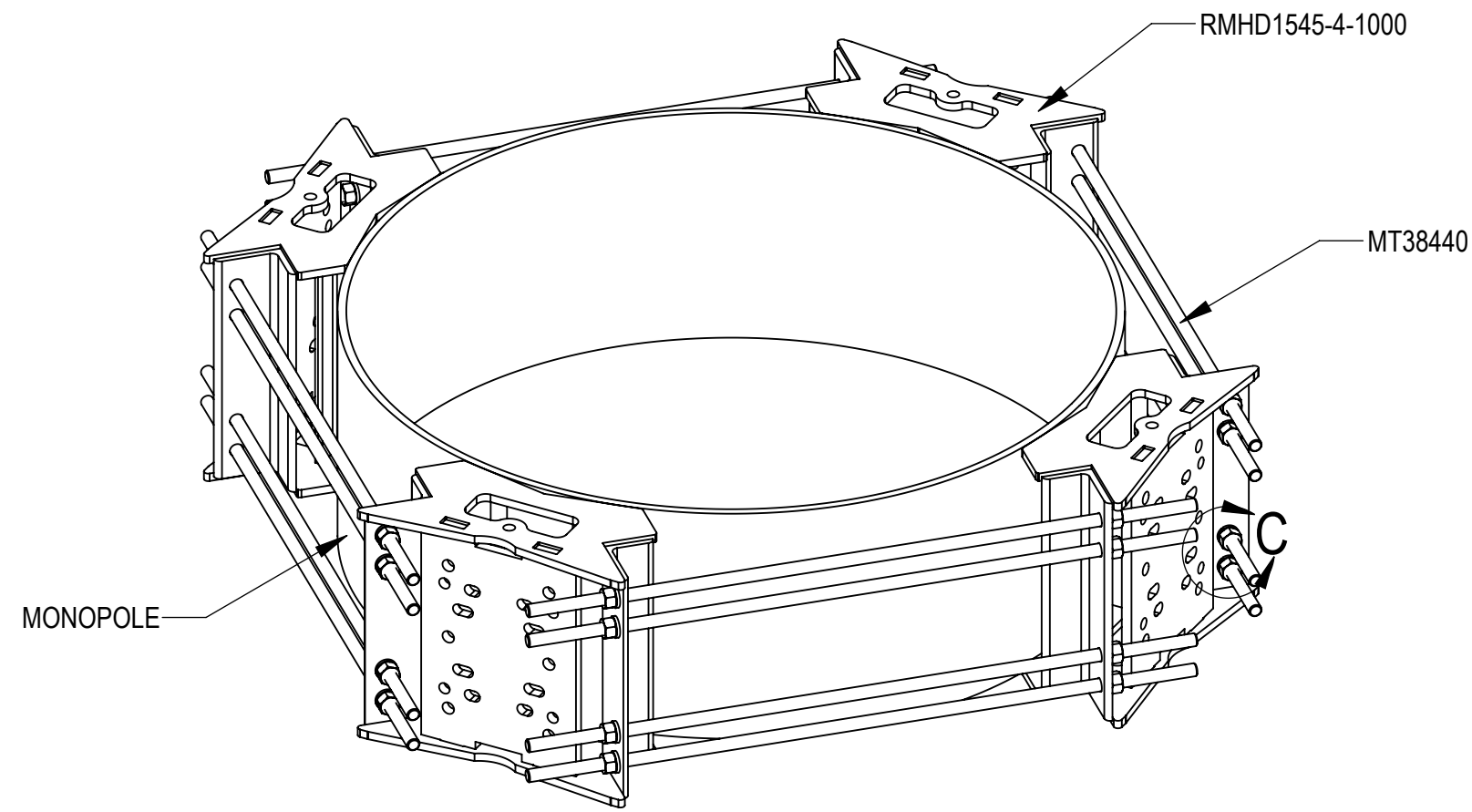
B

B

A

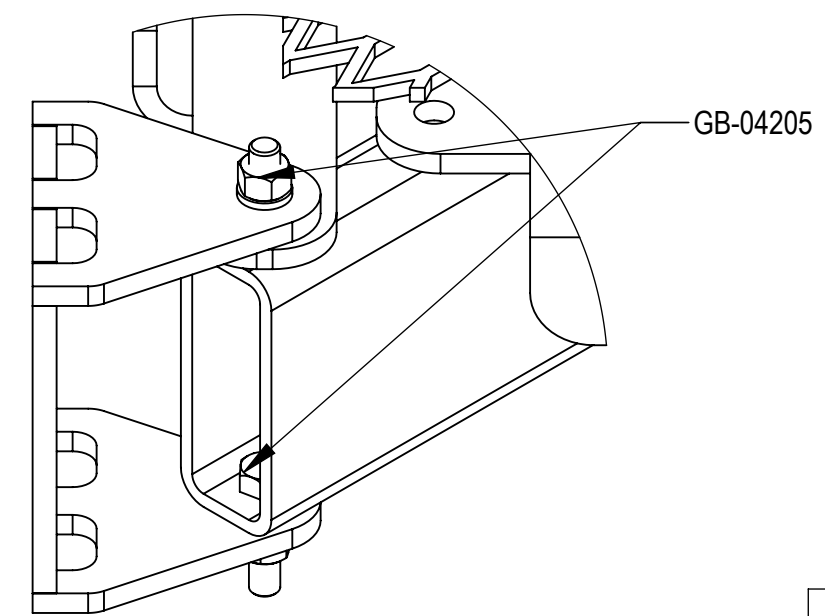
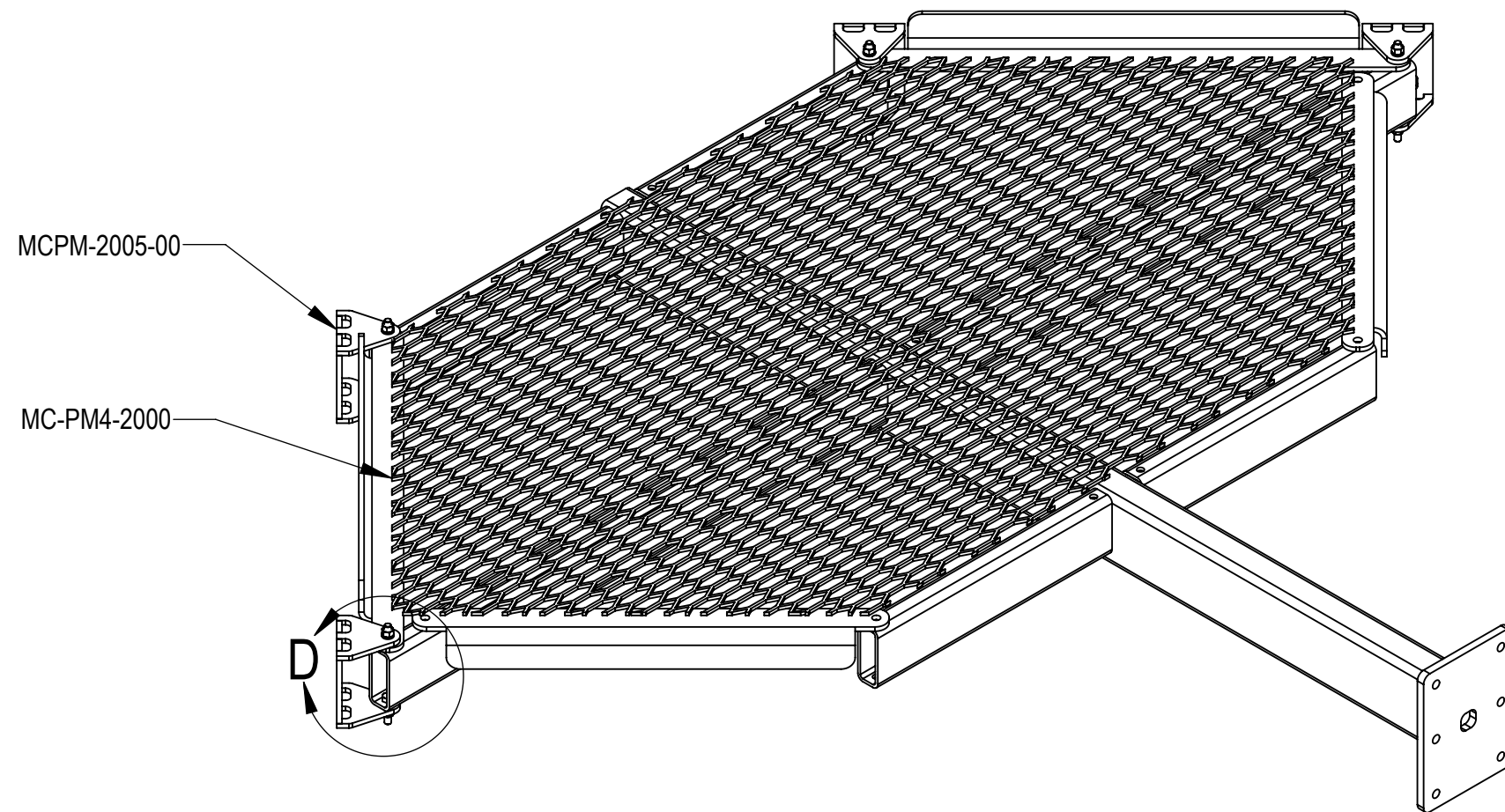
A

STEP 1: ATTACH RING MOUNT SECTORS(RMHD1545-4-1000) TO MONOPOLE USING THREAD RODS (MT38440) AND NUT KITS (GWL-06 & GN-06)


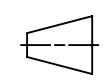


DETAIL C  
SCALE 1 : 2

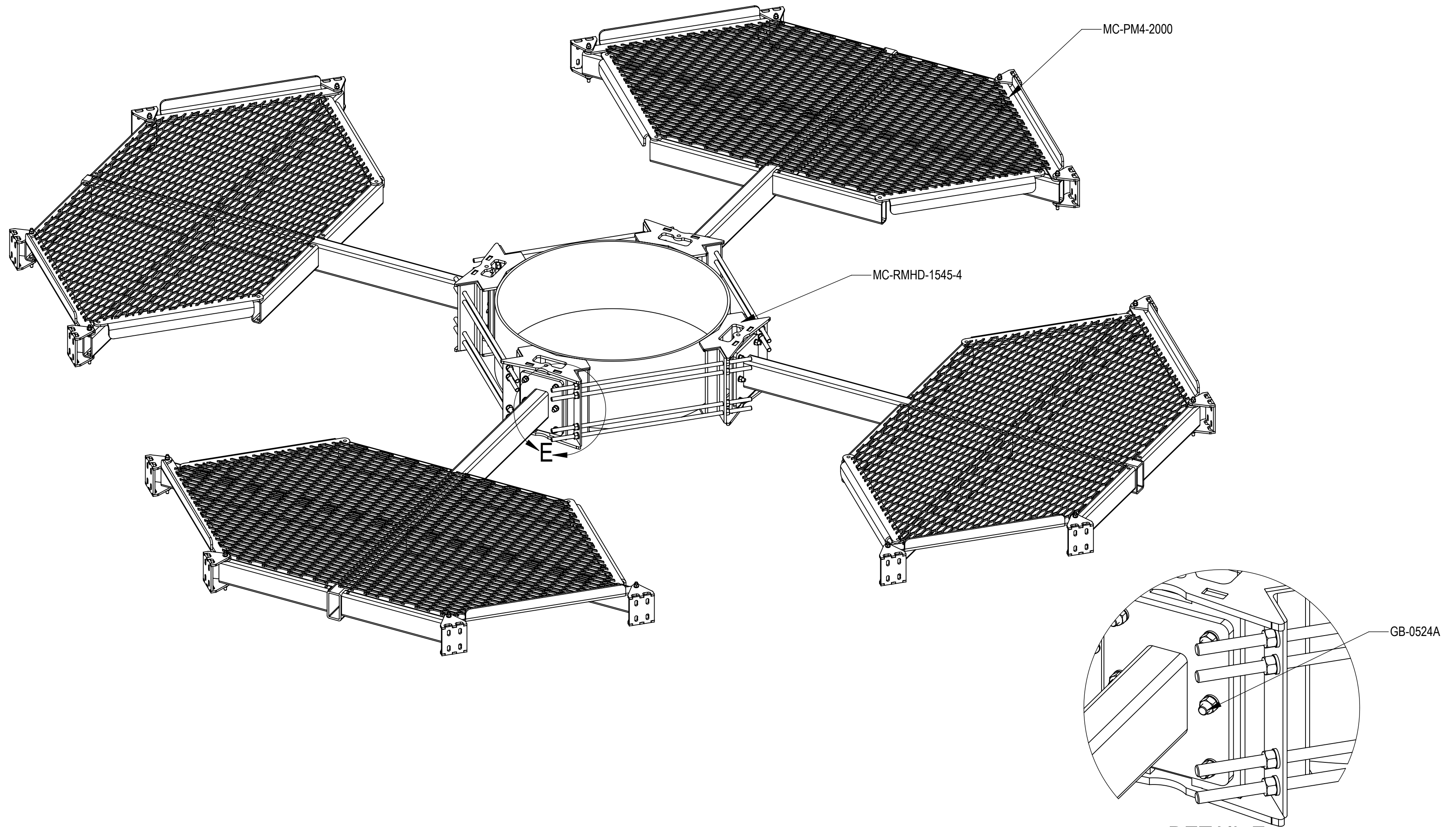
STEP 2: ATTACH PIPE MOUNTING BRACKETS (MCPM-2005-00) TO T-ARMS (MC-PM4-2000) USING BOLT KITS (GB-04205)



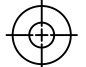
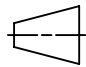
DETAIL D  
SCALE 1 : 3

COMMSCOPE, INC. OF NORTH CAROLINA				
TITLE ATLAS4, 12' FP,(16)2.88" X96"AP				
SIZE <b>C</b>	SCALE <b>1:48</b>	DOCUMENT NO. MC-PM12M4-16-96		
 		DRAWING		SHEET
		VERSION 01	STATUS RE	REVISION B

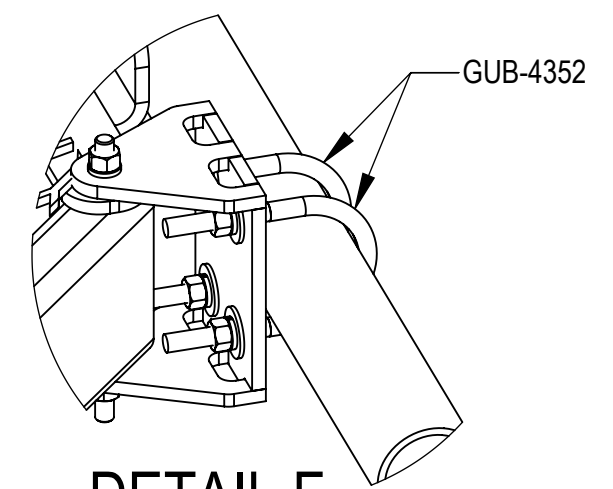
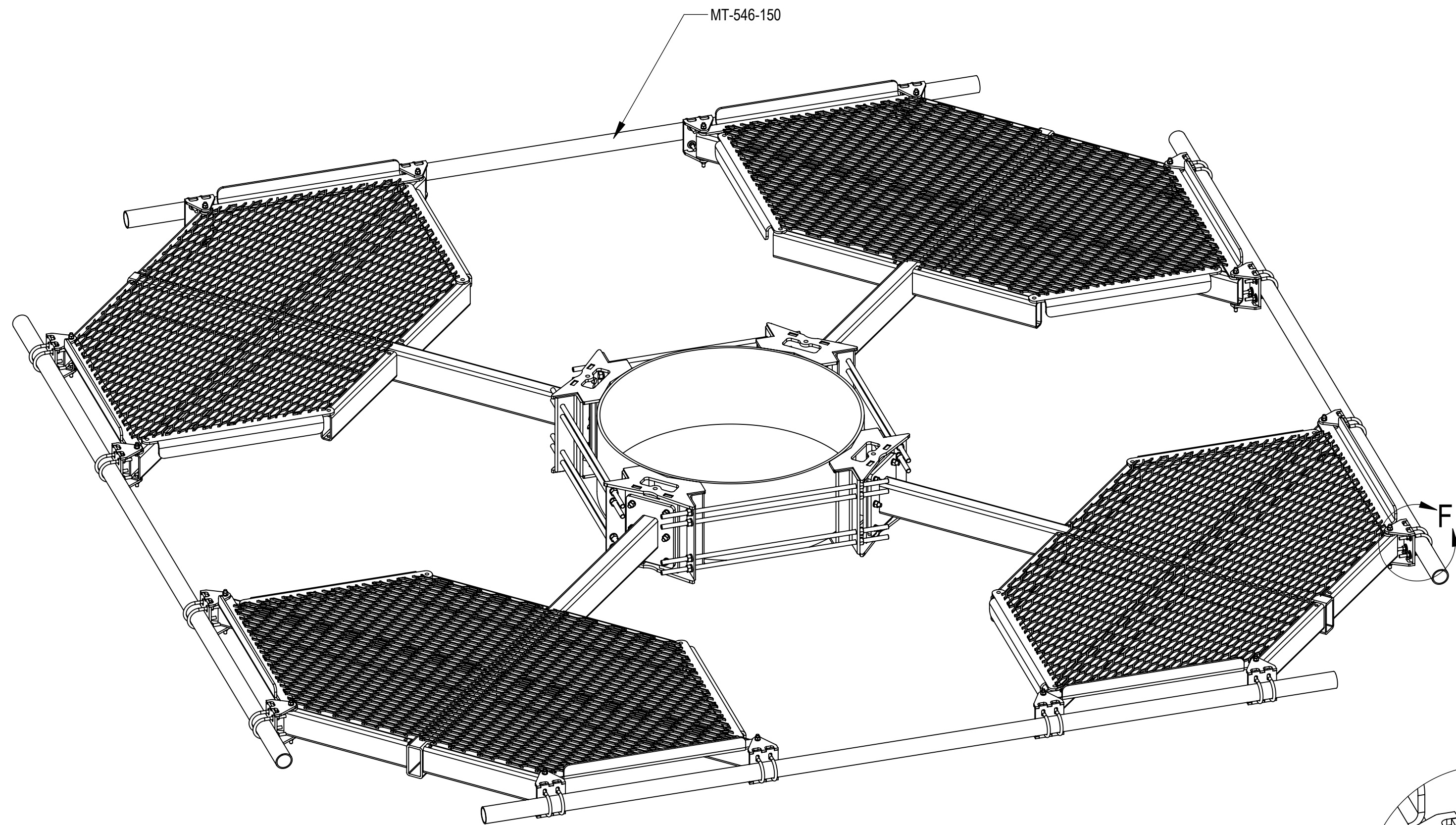
STEP 3: ATTACH T-ARMS (MC-PM4-2000) TO RING MOUNT (MC-RMHD-1545-4) USING BOLT KITS (GB-0524A)



DETAIL E  
SCALE 1:5

COMMSCOPE, INC. OF NORTH CAROLINA				
TITLE ATLAS4, 12' FP,(16)2.88" X96"AP				
SIZE <b>C</b>	SCALE <b>1:48</b>	DOCUMENT NO. MC-PM12M4-16-96		
 		DRAWING		SHEET 5 OF 7
		VERSION 01	STATUS RE	

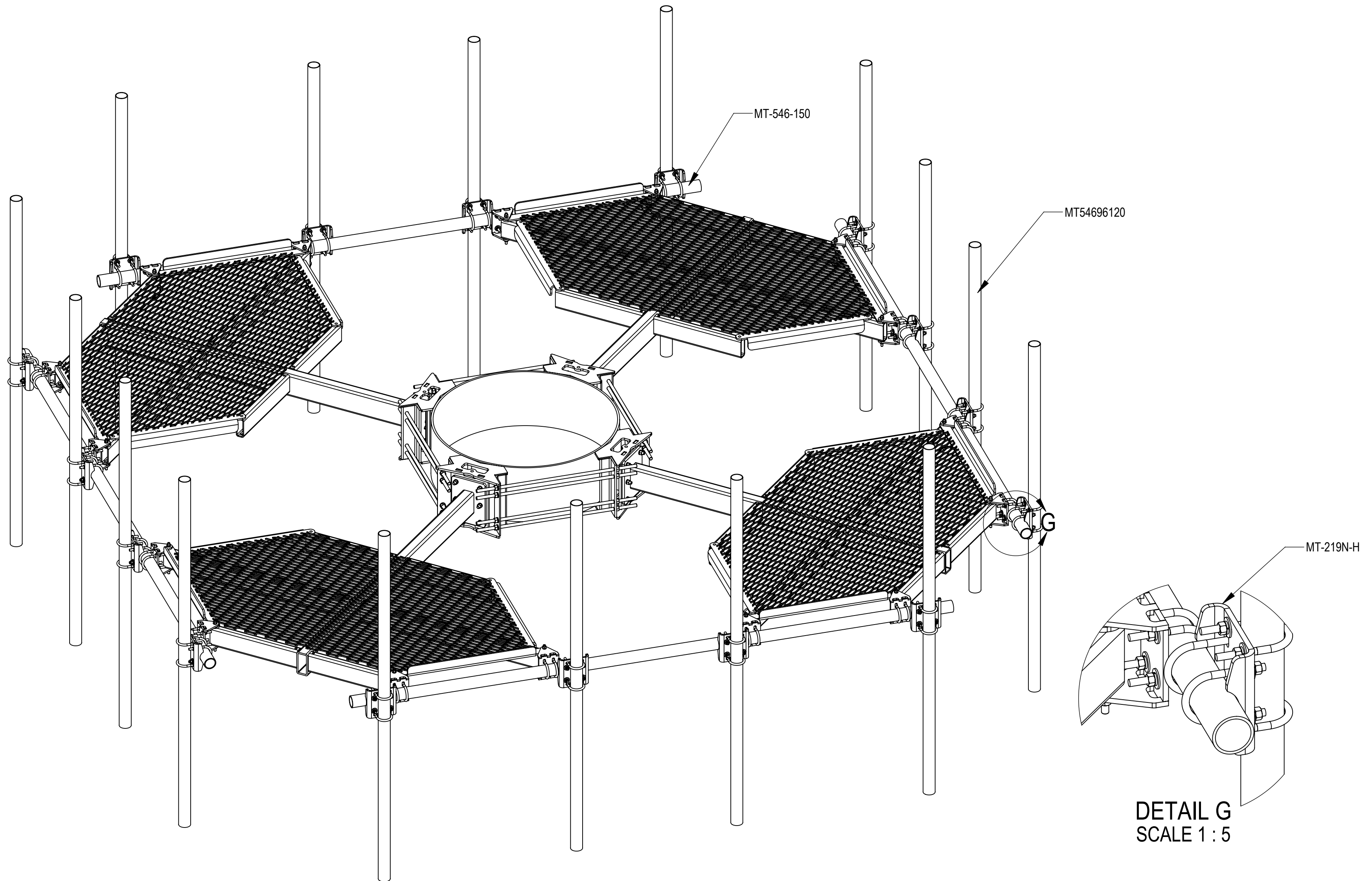
STEP 4: ATTACH FACE PIPES (MT-546-150) TO T-ARMS (MC-PM4-2000) USING U-BOLT KITS (GUB-4352)



DETAIL F  
SCALE 1 : 5

COMMSCOPE, INC. OF NORTH CAROLINA				
TITLE ATLAS4, 12' FP,(16)2.88" X96"AP				
SIZE <b>C</b>	SCALE <b>1:48</b>	DOCUMENT NO. MC-PM12M4-16-96		
		DRAWING		SHEET 6 OF 7
		VERSION 01	STATUS RE	

STEP 5: ATTACH ANT PIPES (MT54696120) TO FACE PIPES (MT-546-150) USING SADDLE PIPE MOUNTING PLATES (MT-219N-H)



DETAIL G  
SCALE 1 : 5

COMMSCOPE, INC. OF NORTH CAROLINA				
TITLE ATLAS4, 12' FP,(16)2.88" X96"AP				
SIZE C	SCALE 1:48	DOCUMENT NO. MC-PM12M4-16-96		
		DRAWING		SHEET
		VERSION	STATUS	REVISION
		01	RE	B
				7 OF 7