

860674608-009 | GRIP ANCHOR, FOR 9 HOLE CABLE LADDER



Heavy Duty Cable Ladder Cross Member with Cable Attachment Points

-Product is designed to be field installed as needed on cable ladders to allow for the attachment of cables. Replaces a current rung on the cable ladder. Additional units can be installed along the cable ladder as needed to support additional cables.

-Purpose built cable ladder rung that is designed to support 1000 pounds of cable per eye or up to 1000 pounds in combination. Ideal for Hybrid cable. Includes mounting eye bolt for attachment.

Installs on the below standard cable ladders:

CL-0910-U

CL-0920-U

-Not to be used for hoisting.

-Competent person to make determination of usage on the structure.

Product Classification

Portfolio	CommScope®
Product Type	Ladder kit
Ordering Note	CommScope® standard product with terms
Warranty	One year

General Specifications

Cable Runs, quantity 3

Material Specifications

Material Type Hot dip galvanized steel

Packaging and Weights

Included Attachment kits

Packaging quantity 1

Regulatory Compliance/Certifications

Agency	Classification
CHINA-ROHS	Above maximum concentration value
ROHS	Compliant/Exempted

860674608-009 | GRIP ANCHOR, FOR 9 HOLE CABLE LADDER

UK-ROHS

Compliant/Exempted



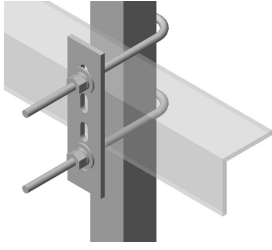
Included Products

- HK-CL-U – Universal Cable Ladder Hardware Kit for 1 in to 4-1/2 in round or angle members

* Footnotes

Warranty For more information, please consult our Product Warranty guidelines

HK-CL-U



Universal Cable Ladder Hardware Kit for 1 in to 4-1/2 in round or angle members

Product Classification

Portfolio	CommScope®
Product Type	Ladder kit
Ordering Note	CommScope® standard product (Global)

General Specifications

Mounting	Round and angle legs
-----------------	----------------------

Dimensions

Height	203.2 mm 8 in
Width	127 mm 5 in
Length	203.2 mm 8 in
Mounting Diameter, maximum	114.3 mm 4.5 in
Mounting Diameter, minimum	25.4 mm 1 in

Material Specifications

Material Type	Hot dip galvanized steel
----------------------	--------------------------

Packaging and Weights

Included	J-bolts Plates
Packaging quantity	1
Weight, net	1.7 kg 3.748 lb

Regulatory Compliance/Certifications

Agency	Classification
CHINA-ROHS	Above maximum concentration value
ISO 9001:2015	Designed, manufactured and/or distributed under this quality management system
ROHS	Compliant/Exempted

HK-CL-U

UK-ROHS

Compliant/Exempted

