

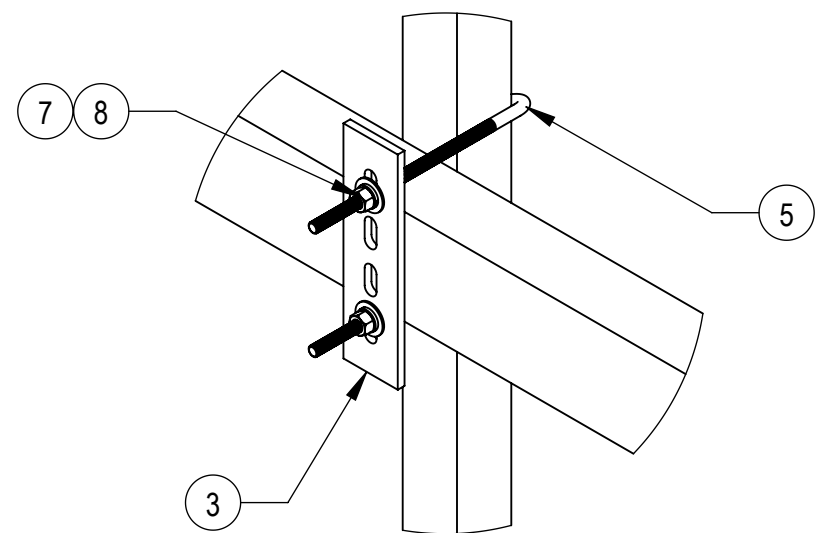
- 1.0 GENERAL NOTES
- 1.1 ALL METRIC DIMENSIONS ARE IN BRACKETS [X. X]
- 1.2 FOR PATENT INFO: <https://www.cs-pat.com>

- 2.0 DESIGN NOTES
- 2.1 ANY HAZARDS OR OBSTRUCTIONS TO THE CLIMBING FACILITY AND SAFETY CLIMB MUST BE IDENTIFIED PRIOR TO INSTALLING THE APPURTENANCE. ADDITIONAL PRODUCTS MAY BE REQUIRED TO MAINTAIN THE INTEGRITY OF THE SAFETY CLIMB. DURING INSTALLATION, TEMPORARY AND/OR PERMANENT PRECAUTIONARY MEASURES SHOULD BE TAKEN TO PRESERVE THE CLIMBING FACILITY AND/OR SAFETY CLIMB.

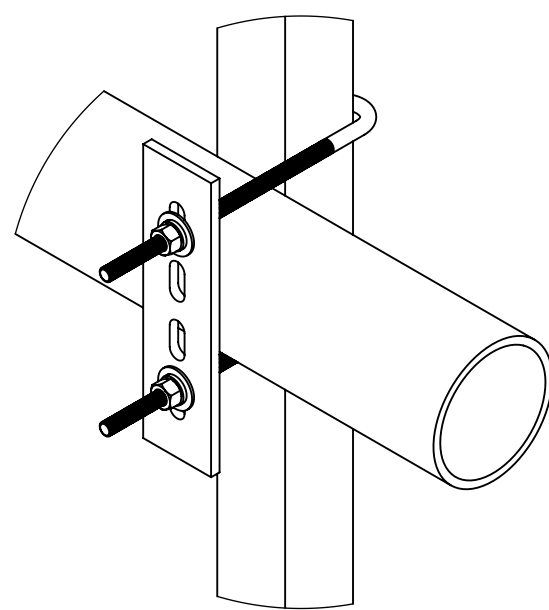
- 3.0 MANUFACTURING/SPECIAL REQUIREMENTS
- 3.1 TIGHTEN ALL BOLTS SECURING FLAT PLATES BY THE TURN-OF-NUT METHOD. TIGHTEN ALL U-BOLTS USING TURN-OF-NUT METHOD WITH ATTENTION TO LEAVE EQUAL DISTANCE AND EQUAL FORCE ON EACH LEG OF THE U-BOLT.

- 4.0 TEST
- 5.0 PACKAGING
- 5.1 PACKAGING SHALL MEET COMMSCOPE REQUIREMENTS PER DOCUMENT IS-PL-3005
- 5.2 PRINTED DOCUMENT TO BE PLACED INSIDE POLYBAG AND THEN IN SHIPPING CONTAINER
- 5.3 EXTRA HARDWARE MAYBE SUPPLIED, BAGGED AND SHIPPED

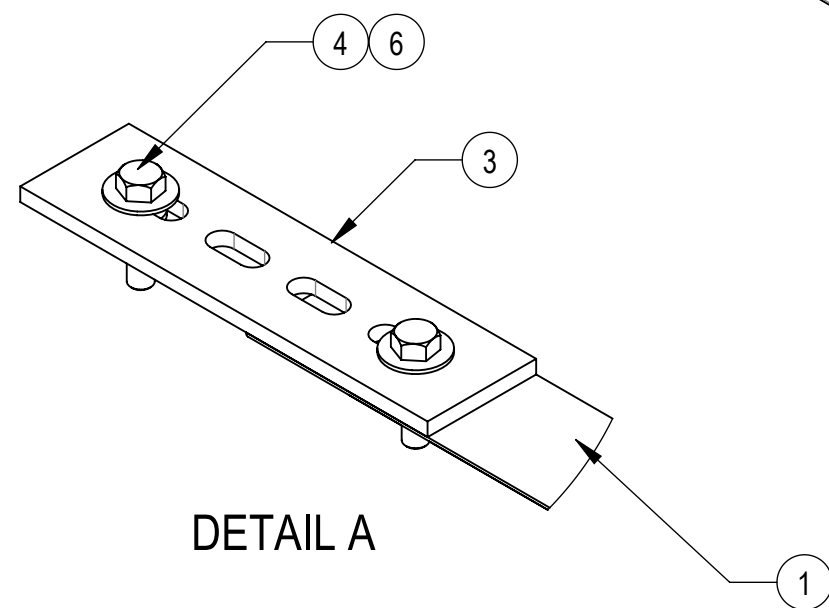
REVISIONS			
REV.	DESCRIPTION	DATE	APPROVED
C	UPDATE PART LIST	ACG 14JAN05	TP
D	REPLACE J-BOLT FROM JB-HK	ACG 12DEC08	TP
E	UPDATED BOM AND BALLOON NUMBERS	DRR 07AUG12	TP
F	UPDATE BOM	MSM 15MAY13	TP
G	UPDATED MEMBER DESCRIPTION CALLOUTS OF ROUND AND ANGLE ON DRAWING	LL1090 04SEP23	BCROSS 40178615CMO



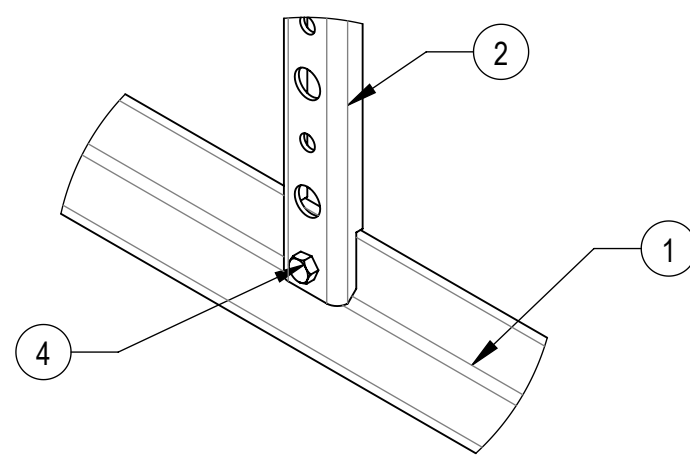
ANGLE MEMBER



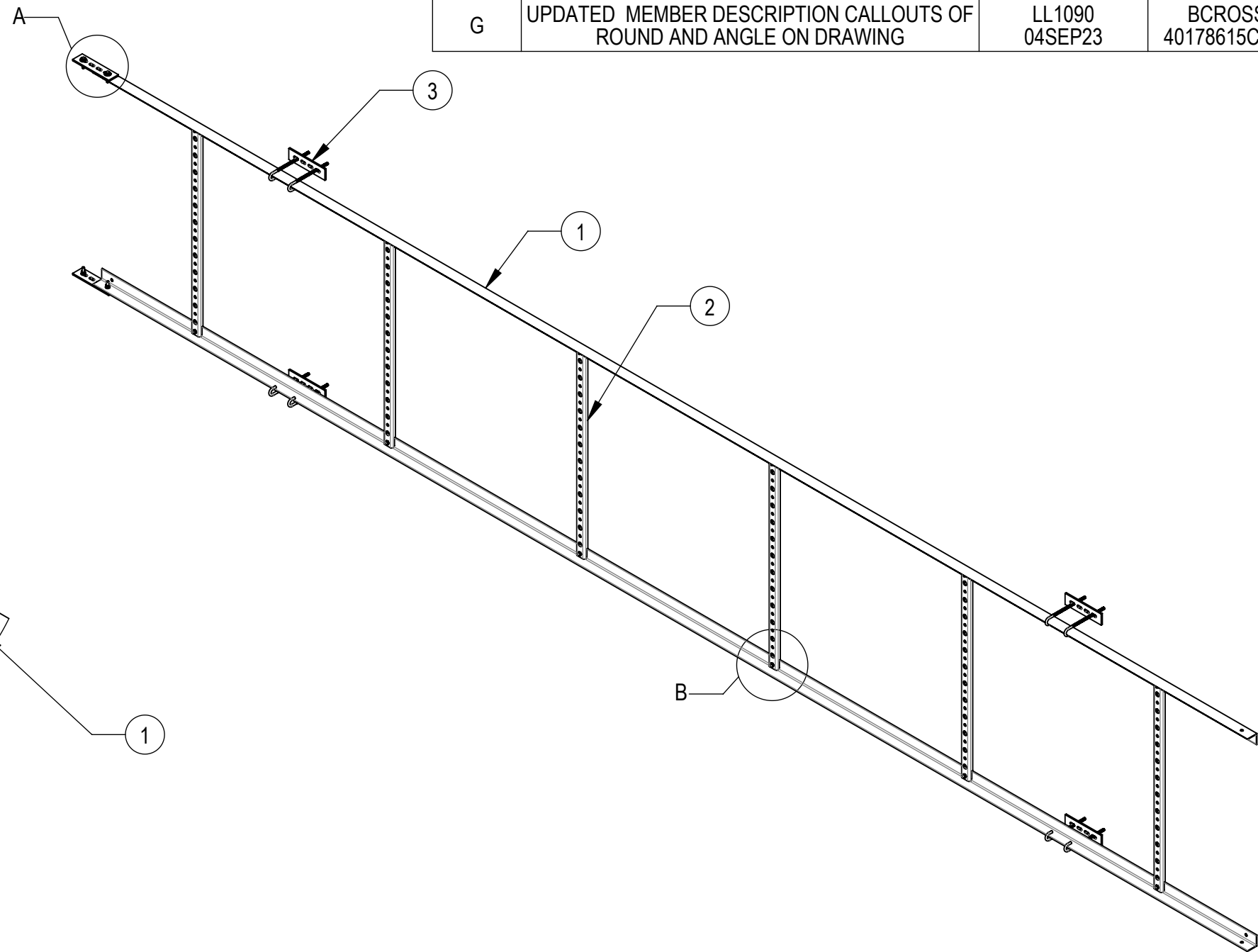
ROUND MEMBER



DETAIL A



DETAIL B



COMPONENT PART NUMBERS PROVIDED FOR ASSEMBLY PURPOSES;
INDIVIDUAL COMPONENTS MAY BE SHIPPED AS PARTS WITHIN AN INCLUDED KIT.

ITEM NO.	PART NUMBER	DESCRIPTION	QTY.	WEIGHT	NOTE NO.
1	CL2001	20' ANGLE SIDE RAIL	2	32.76 LBS	
2	CL12R01	38" LADDER RUNG	6	3.28 LBS	
3	HKCLU02	BACKING PLATE	6	0.95 LBS	
4	GB-03145	3/8" X 1-1/2" GALV BOLT KIT	16	0.07 LBS	
5	GJB0380	8" GALV J-BOLT KIT	8	0.23 LBS	
6	GWF-03	3/8" GALV FLAT WASHER	12	0.01 LBS	
7	GWL-03	3/8" GALV LOCK WASHER	8	0.01 LBS	
8	GN-03	3/8" GALV HEX NUT	8	0.02 LBS	

DENSITY	94.49	lbs/in ³
MASS	334.95	lbs
VOLUME	5431.50	in ³
SURFACE AREA	41.84"	in ²
HEIGHT	8.86"	
LENGTH	244.16"	
WIDTH		

© 2024 CommScope, Inc. Confidential

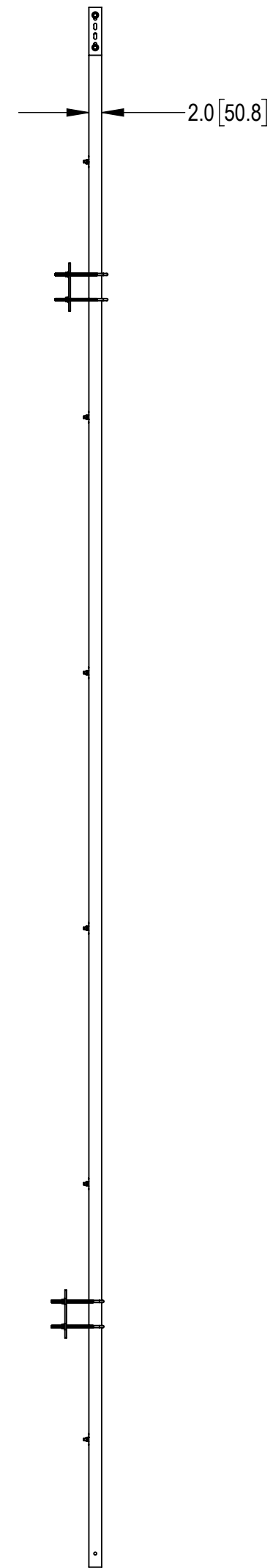
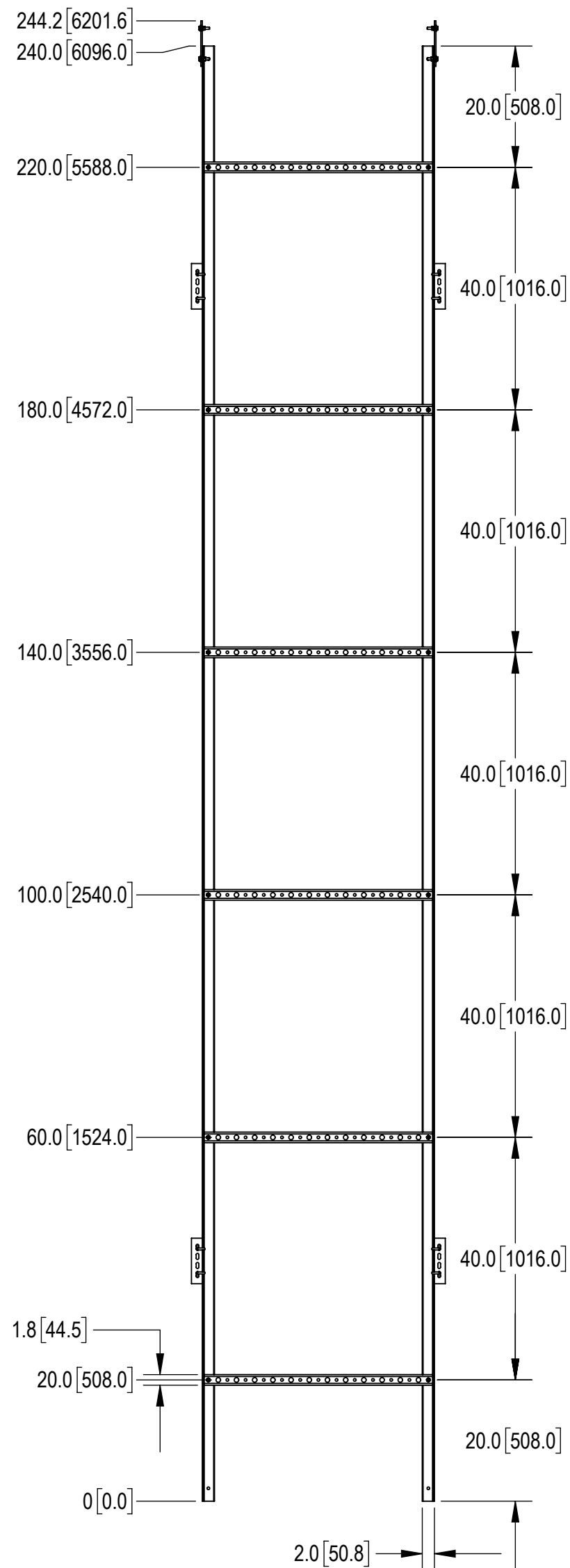
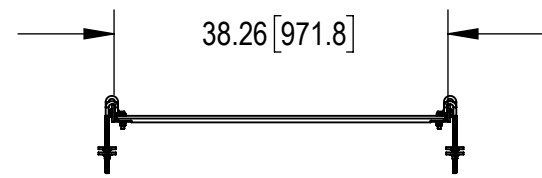
COMMSCOPE, INC. OF NORTH CAROLINA			
TOLERANCES		SAP MATERIAL MASTER	
1 PLACE .X[X] ± 0.06[1.5]	3 PLACE .XXX[X] ± 0.010[0.3]	CL-1220-U	
2 PLACE .XX[X] ± 0.03[0.8]	ANGLES ± 2°		
FINISH		MATERIAL	
UNLESS OTHERWISE SPECIFIED DIMENSIONS ARE IN INCHES INTERPRET PER ANSI Y 14.5M-1994		TITLE	
CE	ACG	14JAN05	CABLE LADDER, 20', 12 HOLE, UNIV. HDWR
RW	YMENG	02/04/2024	
AD	LS1146	02/04/2024	
RE	YMENG	02/04/2024	
ECN 40178615CMO		SCALE	DOCUMENT NO.
		1:1	CL-1220-U
SIZE	Auth Group	INSL	MODEL
C			
VERSION	STATUS	REVISION	DRAWING
01	RE	G	01 RE G
			SHEET
			1 OF 2


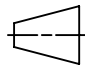
4

3

2

1



COMMSCOPE, INC. OF NORTH CAROLINA				
TITLE CABLE LADDER, 20', 12 HOLE, UNIV. HDWR				
SIZE C	SCALE 1:24	DOCUMENT NO. CL-1220-U		
 		DRAWING		SHEET
		VERSION 01	STATUS RE	REVISION G

© 2024 CommScope, Inc. Confidential

4

3

2

1

D

D

C

C

B

B

A

A