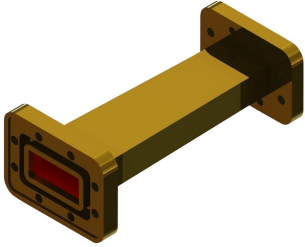


T112CCG



Taper Transition for WR112–WR137, 7.05–8.2 GHz, with interface types CPR112G and CPR137G, 6 in, gray

Product Classification

Product Type Rectangular waveguide, taper transition

General Specifications

Component Taper Transition

Interface CPR112G

Interface 2 CPR137G

Dimensions

Length 152 mm | 5.984 in

Waveguide Size WR112–WR137 | WG15–WG14 | R84–R70

Electrical Specifications

Operating Frequency Band 7.05 – 8.2 GHz

VSWR 1.06

Material Specifications

Finish Gray

Regulatory Compliance/Certifications

Agency	Classification
CHINA-ROHS	Below maximum concentration value
ISO 9001:2015	Designed, manufactured and/or distributed under this quality management system
REACH-SVHC	Compliant as per SVHC revision on www.commscope.com/ProductCompliance
ROHS	Compliant
UK-ROHS	Compliant



