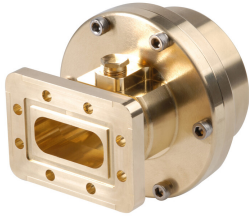


WAVEGUIDE-CONNECTORS

Base Product



Elliptical waveguide connectors

Waveguide connectors are tapered through multistep transitions that adjust their shape in stages from elliptical to the rectangular shape of industry-standard waveguide flanges. Each connector has a pressure inlet to allow the connection of pressurization equipment. Made of brass to provide long service life and compatibility with metals used in the waveguide itself.

Offered connector types:

- Fixed-tuned waveguide connectors
- Waveguide splices

Product Classification

Product Type Elliptical waveguide connector

General Specifications

Attachment Method Tab-flare | Tool-flare

Body Style Straight, fixed-tuned | Straight, non-tunable

Inner Contact Plating Unplated

Interface CPR112G | CPR137G | CPR159G | CPR187G | CPR229G | CPR90G | PBR100 | PBR120 | PBR140 | PBR149/U | UG-344/U | UG-39/U | UG-51/U | UG-541/U | UG-595/U | WR75 Cover

Outer Contact Plating Unplated

Pressurizable Yes

Dimensions

Waveguide Size WR112|WG15|R84 | WR137|WG14|R70 | WR159|WG13|R58 | WR187|WG12|R48 | WR229|WG11|R40 | WR42|WG20|R220 | WR51|WG19|R180 | WR62|WG18|R140 | WR75|WG17|R120 | WR90|WG16|R100

Electrical Specifications

Insertion Loss, typical 0.01 dB

Operating Frequency Band 10.2 – 11.7 GHz | 10.7 – 11.7 GHz | 11.7 – 13.25 GHz | 13.75 – 14.50 GHz | 14.0 – 15.35 GHz | 17.7 – 19.7 GHz | 21.2 – 23.6 GHz | 3.4 – 4.2 GHz | 4.4 – 5.0 GHz | 5.0 – 6.425 GHz | 5.6 – 6.425 GHz | 5.725 – 7.125 GHz | 5.925 – 7.125 GHz | 6.425 – 7.75 GHz | 7.125 – 7.75 GHz | 7.125 – 8.5 GHz | 8.5 – 9.8 GHz

WAVEGUIDE-CONNECTORS

Material Specifications

Material Type Brass

Environmental Specifications

Operating Temperature -55 °C to +85 °C (-67 °F to +185 °F)

Storage Temperature -55 °C to +85 °C (-67 °F to +185 °F)

* Footnotes

Insertion Loss, typical $0.05\sqrt{\text{freq}}$ (GHz) (not applicable for elliptical waveguide)