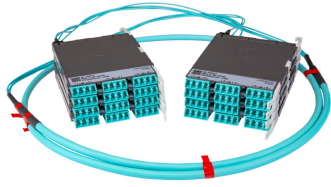


# PPLURXRLCLCR



Propel ULL Multimode OM4 Cabled Module, 1x16 duplex LC Propel module on End A to 1x16 on End B, 16 fiber LSZH Patchcord, Method B Enhanced

- This component requires 4 of the 12 lanes on the Propel Panel blade
- Ultra-low loss (ULL) with Method B Enhanced polarity
- End A module can be installed from rear of panel
- Serialized QR code provides easy access to factory optical test results

## Product Classification

<b>Regional Availability</b>	Asia   Australia/New Zealand   EMEA   Latin America   North America
<b>Portfolio</b>	SYSTIMAX®
<b>Product Type</b>	Fiber cabled module
<b>Product Brand</b>	Propel
<b>Product Series</b>	PPL
<b>Ordering Note</b>	End B module is the same module as End A   For lengths greater than 999 ft (304 m), orders must be in meters   Maximum length is 400 meters

## General Specifications

<b>Configuration Type</b>	PROPEL Module to PROPEL Module
<b>Cable Color</b>	Aqua
<b>Cable Type</b>	Patch cord LSZH
<b>Interface, front</b>	LC/UPC
<b>Interface Feature, front</b>	Duplex   Shuttered
<b>Interface Color, front</b>	Aqua
<b>Interface, rear</b>	LC/UPC
<b>Interface Feature, rear</b>	Duplex   Shuttered
<b>Interface Color, rear</b>	Aqua
<b>Module Size, end A</b>	8 fiber
<b>Module Size, end B</b>	8 fiber
<b>Module Quantity, end A</b>	1
<b>Module Quantity, end B</b>	1
<b>Polarity</b>	Method B Enhanced (ULL)

# PPLURXRLCLR

<b>Total Fibers, quantity</b>	16
<b>Total Ports, quantity, front</b>	8
<b>Total Ports, quantity, rear</b>	8

## Dimensions

<b>Height</b>	11 mm   0.433 in
<b>Width</b>	65 mm   2.559 in
<b>Depth</b>	170 mm   6.693 in
<b>Breakout Length, end B</b>	23 in
<b>Cable Assembly Length Range (m)</b>	1 – 400
<b>Cable Assembly Length Range (ft)</b>	2 – 999

## Ordering Tree



## Optical Specifications

<b>Fiber Mode</b>	Multimode
<b>Fiber Type</b>	OM4
<b>Insertion Loss, maximum</b>	0.35 dB

## Environmental Specifications

<b>Qualification Standards</b>	IEC 61753-1   TIA-568.3-D
<b>Safety Standard</b>	c-UL-us

## Packaging and Weights

<b>Packaging quantity</b>	1
---------------------------	---

## Regulatory Compliance/Certifications

# PPLURXRLCLR

---

Agency	Classification
CHINA-ROHS	Above maximum concentration value
ROHS	Compliant/Exempted
UK-ROHS	Compliant



## Included Products

- 760251055  
N-016-MP-5K-F30AQ/D – Fiber indoor cable, LazrSPEED® Low Smoke Zero Halogen Riser Light Duty for MPO Patchcords, 16 fiber, Multimode OM4, Gel-free, Feet jacket marking, Aqua jacket color, Dca flame rating