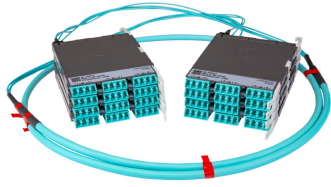


PPLUJVCLCK



Propel ULL Multimode OM5 Cabled Module, 6x12 duplex LC Propel module on End A to 6x12 on End B, 72 fiber LSZH Trunk, Method B Enhanced

- This component requires 3 of the 12 lanes on the Propel Panel blade
- Ultra-low loss (ULL) with Method B Enhanced polarity
- End A module can be installed from rear of panel
- Serialized QR code provides easy access to factory optical test results

Product Classification

| | |
|------------------------------|---|
| Regional Availability | Asia Australia/New Zealand EMEA Latin America North America |
| Portfolio | SYSTIMAX® |
| Product Type | Fiber cabled module |
| Product Brand | Propel |
| Product Series | PPL |
| Ordering Note | End B module is the same module as End A For lengths greater than 999 ft (304 m), orders must be in meters Maximum length is 400 meters |

General Specifications

| | |
|---------------------------------|--------------------------------|
| Configuration Type | PROPEL Module to PROPEL Module |
| Cable Color | Lime green |
| Cable Type | Trunk Cable - LSZH |
| Interface, front | LC/UPC |
| Interface Feature, front | Duplex Shuttered |
| Interface Color, front | Lime green |
| Interface, rear | LC/UPC |
| Interface Feature, rear | Duplex Shuttered |
| Interface Color, rear | Lime green |
| Module Size, end A | 12 fiber |
| Module Size, end B | 12 fiber |
| Module Quantity, end A | 6 |
| Module Quantity, end B | 6 |
| Polarity | Method B Enhanced (ULL) |

PPLUJVDLCLCK

| | |
|-------------------------------------|----|
| Total Fibers, quantity | 72 |
| Total Ports, quantity, front | 36 |
| Total Ports, quantity, rear | 36 |

Dimensions

| | |
|---|-------------------|
| Height | 11 mm 0.433 in |
| Width | 98 mm 3.858 in |
| Depth | 170 mm 6.693 in |
| Breakout Length, end B | 23 in |
| Cable Assembly Length Range (m) | 1 – 400 |
| Cable Assembly Length Range (ft) | 2 – 999 |

Ordering Tree



Optical Specifications

| | |
|--------------------------------|-----------|
| Fiber Mode | Multimode |
| Fiber Type | OM5 |
| Insertion Loss, maximum | 0.35 dB |

Environmental Specifications

| | |
|--------------------------------|---------------------------|
| Qualification Standards | IEC 61753-1 TIA-568.3-D |
| Safety Standard | c-UL-us |

Packaging and Weights

| | |
|---------------------------|---|
| Packaging quantity | 1 |
|---------------------------|---|

Regulatory Compliance/Certifications

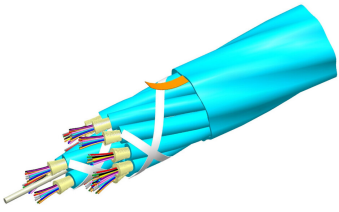
PPLUJVCLCK

| Agency | Classification |
|------------|-----------------------------------|
| CHINA-ROHS | Above maximum concentration value |
| ROHS | Compliant/Exempted |
| UK-ROHS | Compliant |



Included Products

- 760244159 N-072-MP-5G-F12LM/20T/D – Fiber indoor cable, LazrSPEED® Low Smoke Zero Halogen Riser MPO Trunk, 72 fiber multi-unit with 12 fiber 2.0mm subunits, Gel-free, Multimode OM5, Feet jacket marking, Lime green jacket color, Dca flame rating



Fiber indoor cable, LazrSPEED® Low Smoke Zero Halogen Riser MPO Trunk, 72 fiber multi-unit with 12 fiber 2.0mm subunits, Gel-free, Multimode OM5, Feet jacket marking, Lime green jacket color, Dca flame rating

Product Classification

| | |
|------------------------------|---|
| Regional Availability | Asia Australia/New Zealand EMEA Latin America North America |
| Portfolio | CommScope® |
| Product Type | Fiber indoor cable |
| Product Series | N-MP |

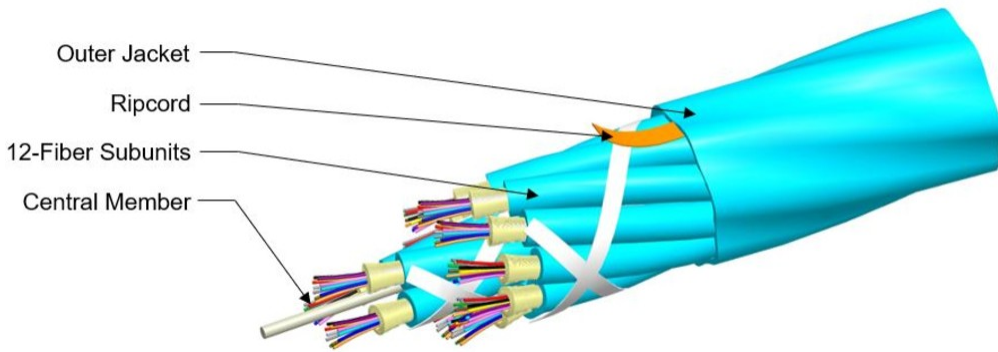
General Specifications

| | |
|-------------------------------------|-----------------|
| Cable Type | MPO trunk cable |
| Construction Type | Non-armored |
| Subunit Type | Gel-free |
| Jacket Color | Lime green |
| Jacket Marking | Feet |
| Subunit, quantity | 6 |
| Fibers per Subunit, quantity | 12 |
| Total Fiber Count | 72 |

Dimensions

| | |
|-------------------------------------|-------------------|
| Buffer Tube/Subunit Diameter | 2 mm 0.079 in |
| Diameter Over Jacket | 8.2 mm 0.323 in |

Representative Image



Mechanical Specifications

| | |
|--|---------------------------------------|
| Minimum Bend Radius, loaded | 123 mm 4.843 in |
| Minimum Bend Radius, unloaded | 82 mm 3.228 in |
| Tensile Load, long term, maximum | 200 N 44.962 lbf |
| Tensile Load, short term, maximum | 667 N 149.948 lbf |
| Compression | 10 N/mm 57.101 lb/in |
| Compression Test Method | FOTP-41 IEC 60794-1 E3 |
| Flex | 300 cycles |
| Flex Test Method | FOTP-104 IEC 60794-1 E6 |
| Impact | 2.94 N-m 26.021 in lb |
| Impact Test Method | FOTP-25 IEC 60794-1 E4 |
| Strain | See long and short term tensile loads |
| Strain Test Method | FOTP-33 IEC 60794-1 E1 |
| Twist | 10 cycles |
| Twist Test Method | FOTP-85 IEC 60794-1 E7 |
| Vertical Rise, maximum | 295 m 967.848 ft |

Optical Specifications

| | |
|-------------------|---|
| Fiber Type | OM5, LazrSPEED® wideband OM5, LazrSPEED® wideband |
|-------------------|---|

Environmental Specifications

| | |
|---------------------------------|--------------------------------------|
| Installation temperature | 0 °C to +60 °C (+32 °F to +140 °F) |
| Operating Temperature | 0 °C to +70 °C (+32 °F to +158 °F) |
| Storage Temperature | -40 °C to +70 °C (-40 °F to +158 °F) |

760244159 | N-072-MP-5G-F12LM/20T/D

| | |
|---|---|
| Cable Qualification Standards | ANSI/ICEA S-83-596 Telcordia GR-409 |
| EN50575 CPR Cable EuroClass Fire Performance | Dca |
| EN50575 CPR Cable EuroClass Smoke Rating | s1a |
| EN50575 CPR Cable EuroClass Droplets Rating | d1 |
| EN50575 CPR Cable EuroClass Acidity Rating | a1 |
| Environmental Space | Low Smoke Zero Halogen (LSZH) Riser |
| Flame Test Listing | NEC OFNR-ST1 (ETL) and c(ETL) |
| Flame Test Method | IEC 60332-3 IEC 60754-2 IEC 61034-2 UL 1666 UL 1685 |

Environmental Test Specifications

| | |
|--------------------------------------|-------------------------------------|
| Heat Age | 0 °C to +85 °C (+32 °F to +185 °F) |
| Heat Age Test Method | IEC 60794-1 F9 |
| Low High Bend | -20 °C to +70 °C (-4 °F to +158 °F) |
| Low High Bend Test Method | FOTP-37 IEC 60794-1 E11 |
| Temperature Cycle | 0 °C to +70 °C (+32 °F to +158 °F) |
| Temperature Cycle Test Method | FOTP-3 IEC 60794-1 F1 |

Packaging and Weights

| | |
|---------------------|----------------------------|
| Cable weight | 65.4 kg/km 43.947 lb/kft |
|---------------------|----------------------------|

Regulatory Compliance/Certifications

| Agency | Classification |
|---------------|--|
| CENELEC | EN 50575 compliant, Declaration of Performance (DoP) available |
| CHINA-ROHS | Below maximum concentration value |
| ISO 9001:2015 | Designed, manufactured and/or distributed under this quality management system |
| REACH-SVHC | Compliant as per SVHC revision on www.commscope.com/ProductCompliance |
| ROHS | Compliant |
| UK-ROHS | Compliant |



* Footnotes

Operating Temperature Specification applicable to non-terminated bulk fiber cable