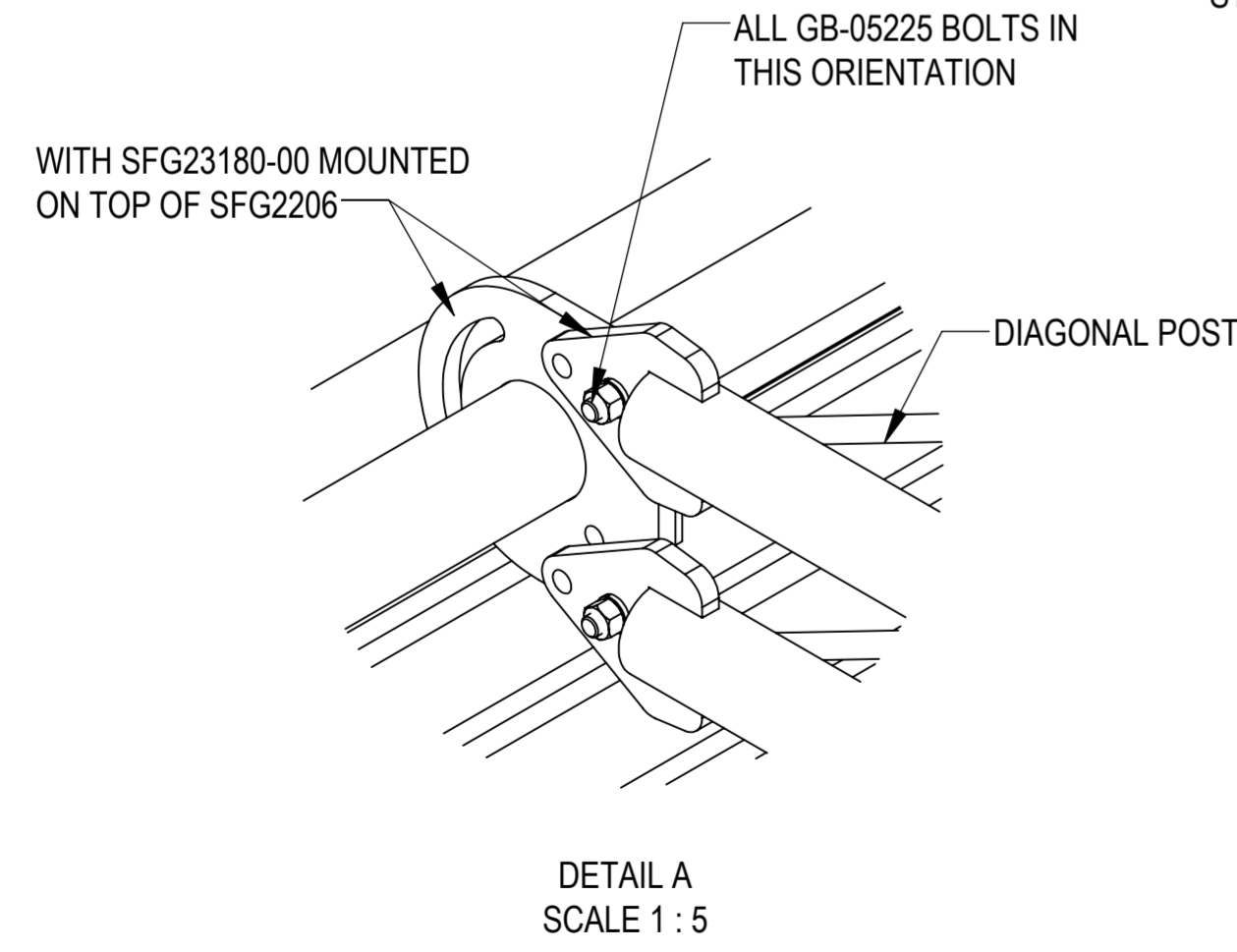
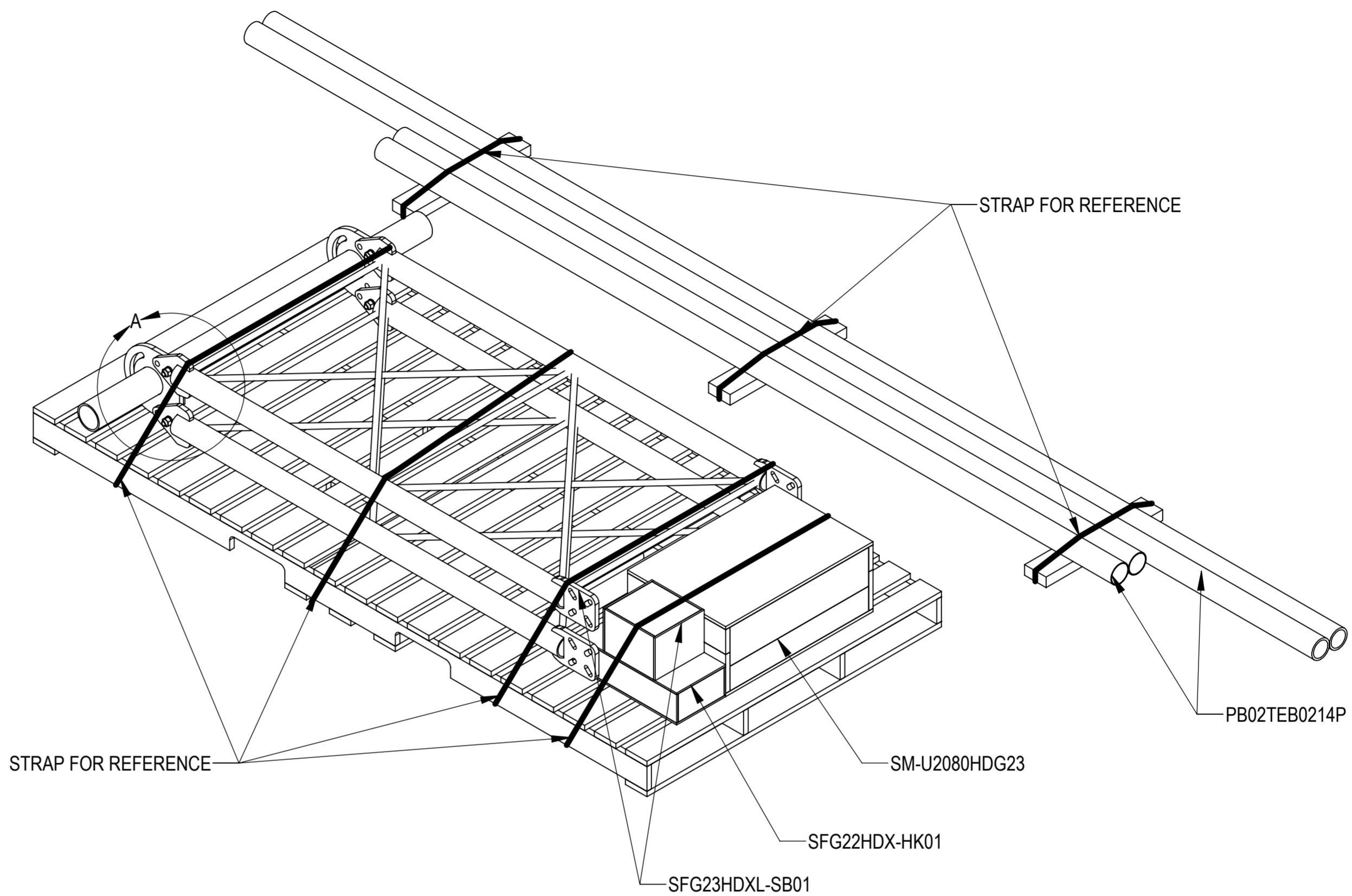


- 1.0 GENERAL NOTES  
 1.1 ALL IMPERIAL DIMENSIONS ARE IN BRACKETS [X.XX]  
 1.2 FOR PATENT INFO: <https://www.cs-pat.com>  
 2.0 DESIGN NOTES  
 2.1 ANY HAZARDS OR OBSTRUCTIONS TO THE CLIMBING FACILITY AND SAFETY CLIMB MUST BE IDENTIFIED PRIOR TO INSTALLING THE APPURTENANCE. ADDITIONAL PRODUCTS MAY BE REQUIRED TO MAINTAIN THE INTEGRITY OF THE SAFETY CLIMB. DURING INSTALLATION, TEMPORARY AND/OR PERMANENT PRECAUTIONARY MEASURES SHOULD BE TAKEN TO PRESERVE THE CLIMBING FACILITY AND/OR SAFETY CLIMB.  
 2.2 UP TO 5.0° TAPER AVAILABLE ON MODELS THAT SUPPORT ADJUSTMENT  
 3.0 MANUFACTURING/SPECIAL REQUIREMENTS  
 3.1 TIGHTEN ALL BOLTS SECURING FLAT PLATES BY THE TURN-OF-NUT METHOD. TIGHTEN ALL U-BOLTS USING TURN-OF-NUT METHOD WITH ATTENTION TO LEAVE EQUAL DISTANCE AND EQUAL FORCE ON EACH LEG OF THE U-BOLT.  
 4.0 TEST  
 5.0 PACKAGING  
 5.1 PACKAGING SHALL MEET COMMSCOPE REQUIREMENTS PER DOCUMENT IS-PL-3005.  
 5.2 PRINTED DOCUMENT TO BE PLACED INSIDE POLYBAG AND THEN IN SHIPPING CONTAINER.  
 5.3 EXTRA HARDWARE MAYBE SUPPLIED, BAGGED AND SHIPPED.

REVISIONS			
REV.	DESCRIPTION	DATE	APPROVED
A	INITIAL RELEASE	JL1183 25APR23	YW1047 40170279CMO



**COMMSCOPE, INC. OF NORTH CAROLINA**

TOLERANCES		SAP MATERIAL MASTER													
0 PLACE X[.X] ± 5[0.2]	2 PLACE .XX[.XXX] ± 1.50[0.060]	<b>SFG23HDXL-14-B</b>													
1 PLACE .X[.XX] ± 3.0[0.12]	ANGLES ± 2°														
FINISH		MATERIAL													
<small>UNLESS OTHERWISE SPECIFIED DIMENSIONS ARE IN MILLIMETERS INTERPRET PER ANSI Y 14.3M-1994</small>		<table border="1" style="width: 100%;"> <tr> <th>NAME</th> <th>DATE</th> <th>TITLE</th> </tr> <tr> <td>CE JL1183</td> <td>22MAR23</td> <td rowspan="4" style="text-align: center; vertical-align: middle;"><b>SECTOR FRAME 14'6" FACE, NO AP</b></td> </tr> <tr> <td>RW JL1183</td> <td>05/09/2023</td> </tr> <tr> <td>AD</td> <td></td> </tr> <tr> <td>RE</td> <td></td> </tr> </table>		NAME	DATE	TITLE	CE JL1183	22MAR23	<b>SECTOR FRAME 14'6" FACE, NO AP</b>	RW JL1183	05/09/2023	AD		RE	
		NAME	DATE	TITLE											
		CE JL1183	22MAR23	<b>SECTOR FRAME 14'6" FACE, NO AP</b>											
		RW JL1183	05/09/2023												
AD															
RE															
ECN 40170279CMO		SCALE 1:12	DOCUMENT NO. <b>SFG23HDXL-14-B</b>												
SIZE <b>A2</b>	Auth Group INSL	MODEL													
<table border="1" style="width: 100%;"> <tr> <th>VERSION</th> <th>STATUS</th> <th>REVISION</th> <th>VERSION</th> <th>STATUS</th> <th>REVISION</th> </tr> <tr> <td>00</td> <td>RE</td> <td>A</td> <td>00</td> <td>RW</td> <td>A</td> </tr> </table>		VERSION	STATUS	REVISION	VERSION	STATUS	REVISION	00	RE	A	00	RW	A	DRAWING	
		VERSION	STATUS	REVISION	VERSION	STATUS	REVISION								
00	RE	A	00	RW	A										
		SHEET 1 OF 6													

# PART NUMBERS, WEIGHTS, & EPA

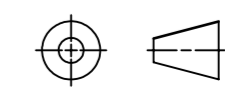
TABLE 1: CONFIGURATIONS

PART NUMBER	DESCRIPTION	WEIGHT (LBS)	EPA(N) (FT^2)	EPA(T) (FT^2)	EPA(N)_ICE (NORMAL) (FT^2)	EPA(T)_ICE (TRANSVERSE) (FT^2)	INCLUDED PARTS			
							SM-U2080HDG23	SFG22HDX-HK01	SFG23HDXL-SB01	PB02TEB0214P
SFG23HDXL-14-B	SECTOR FRAME 14' FACE, NO AP	722.8	11.8	9.95	16.93	15.47	1	1	1	1

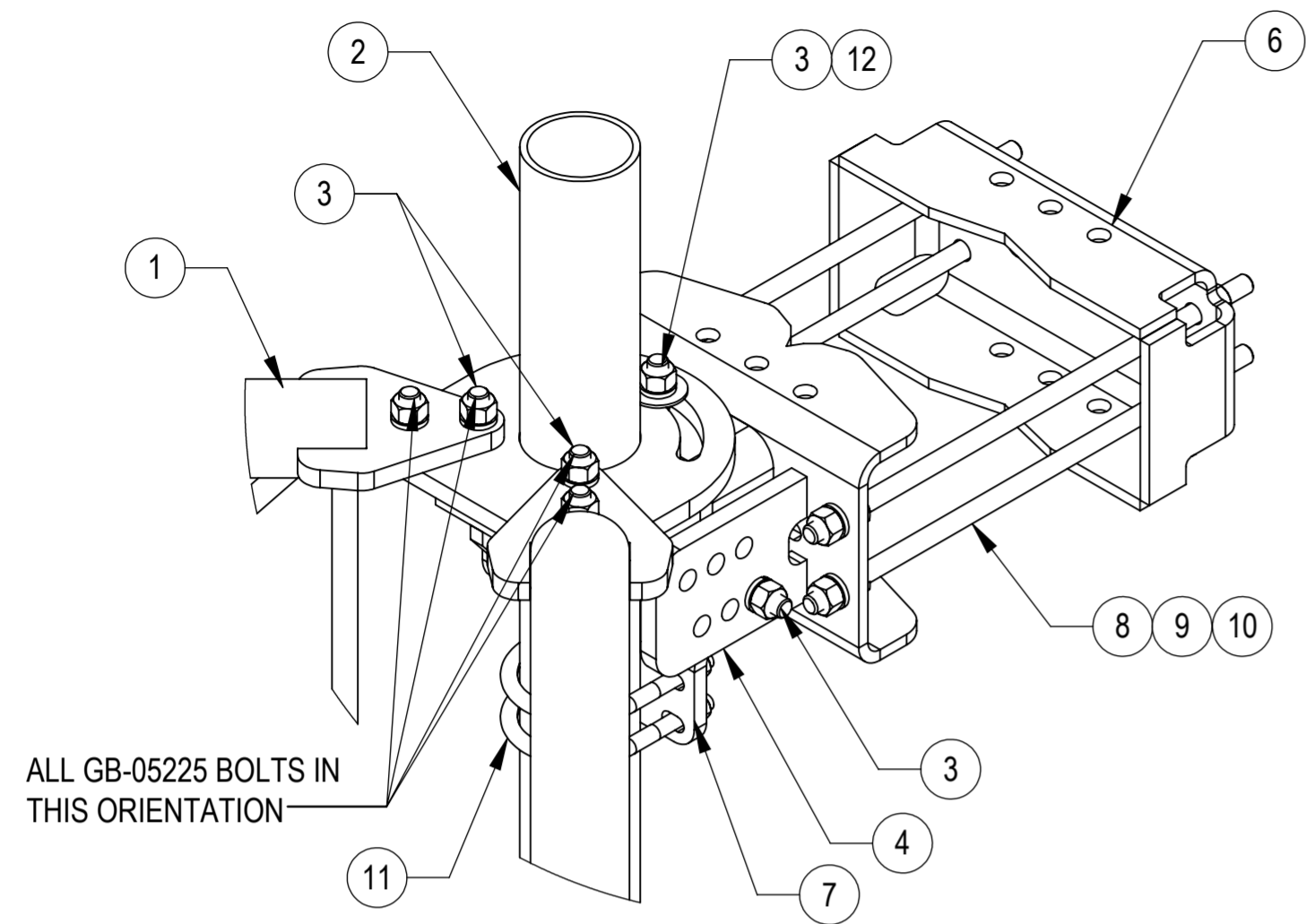
COMMSCOPE, INC. OF NORTH CAROLINA

TITLE  
SECTOR FRAME 14'6" FACE, NO AP

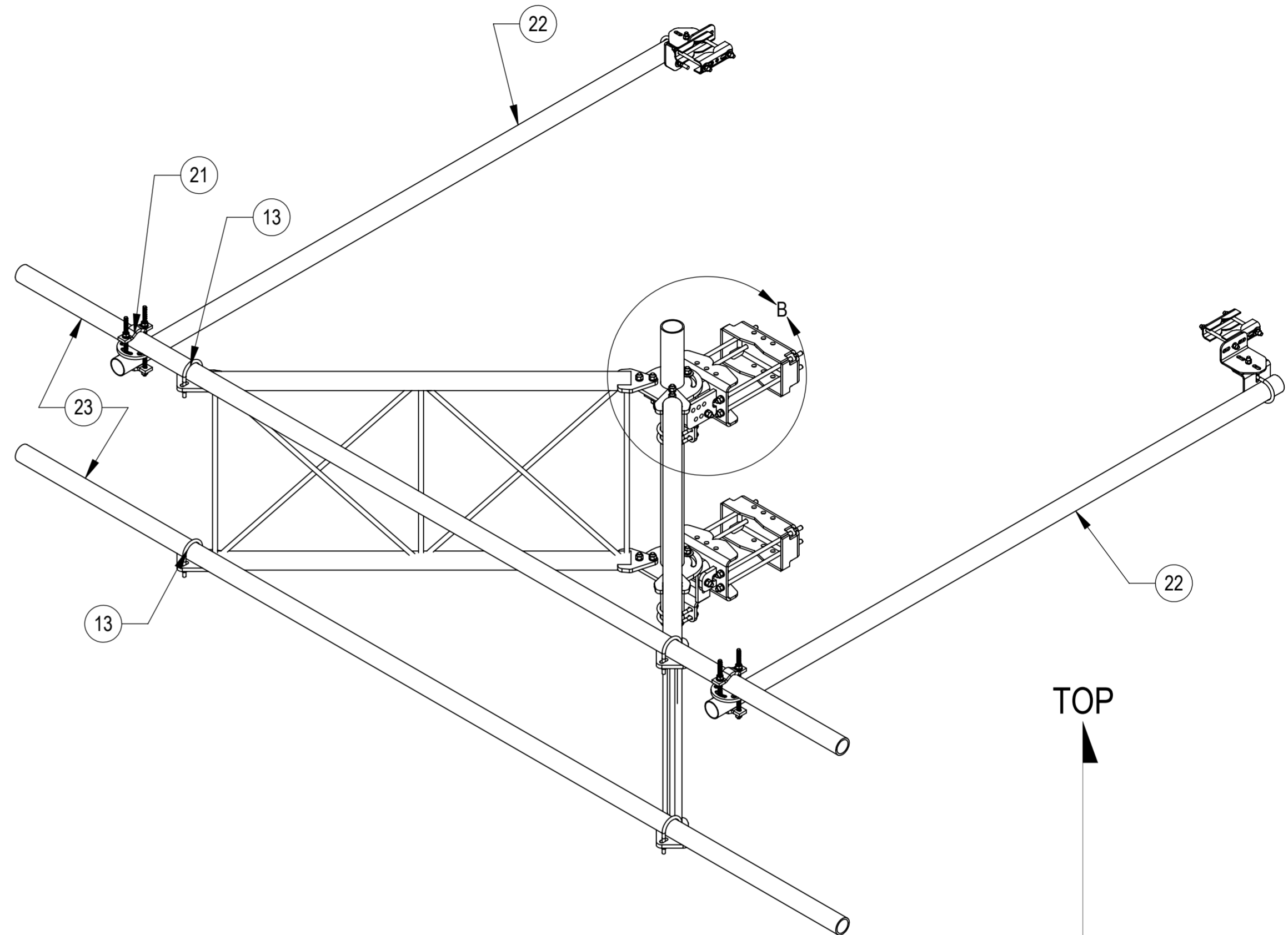
SIZE: **A2**    SCALE: **1:12**    DOCUMENT NO.: **SFG23HDXL-14-B**



DRAWING			SHEET 2 OF 6
VERSION	STATUS	REVISION	
00	RW	A	

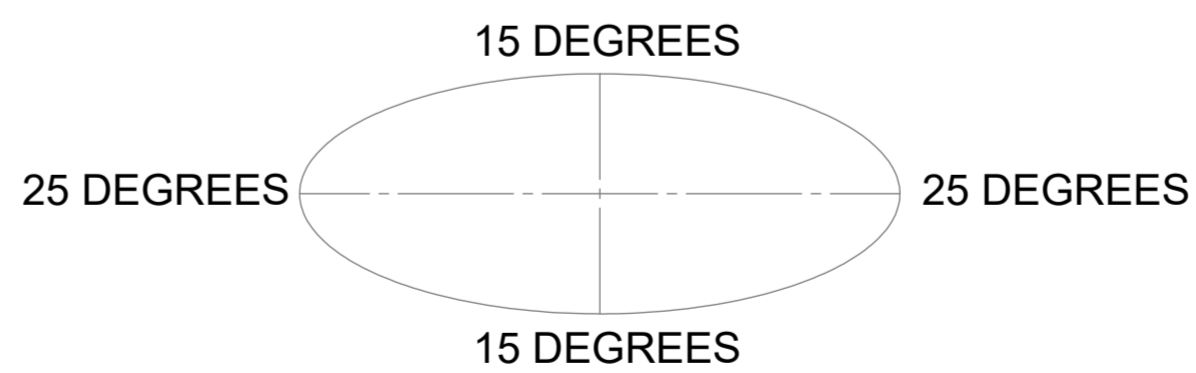


DETAIL B  
SCALE 1 : 5



TOP  
↓  
BOTTOM

**ALLOWABLE TIEBACK ANGLE**  
± 15 DEGREES VERTICAL  
± 25 DEGREES HORIZONTAL



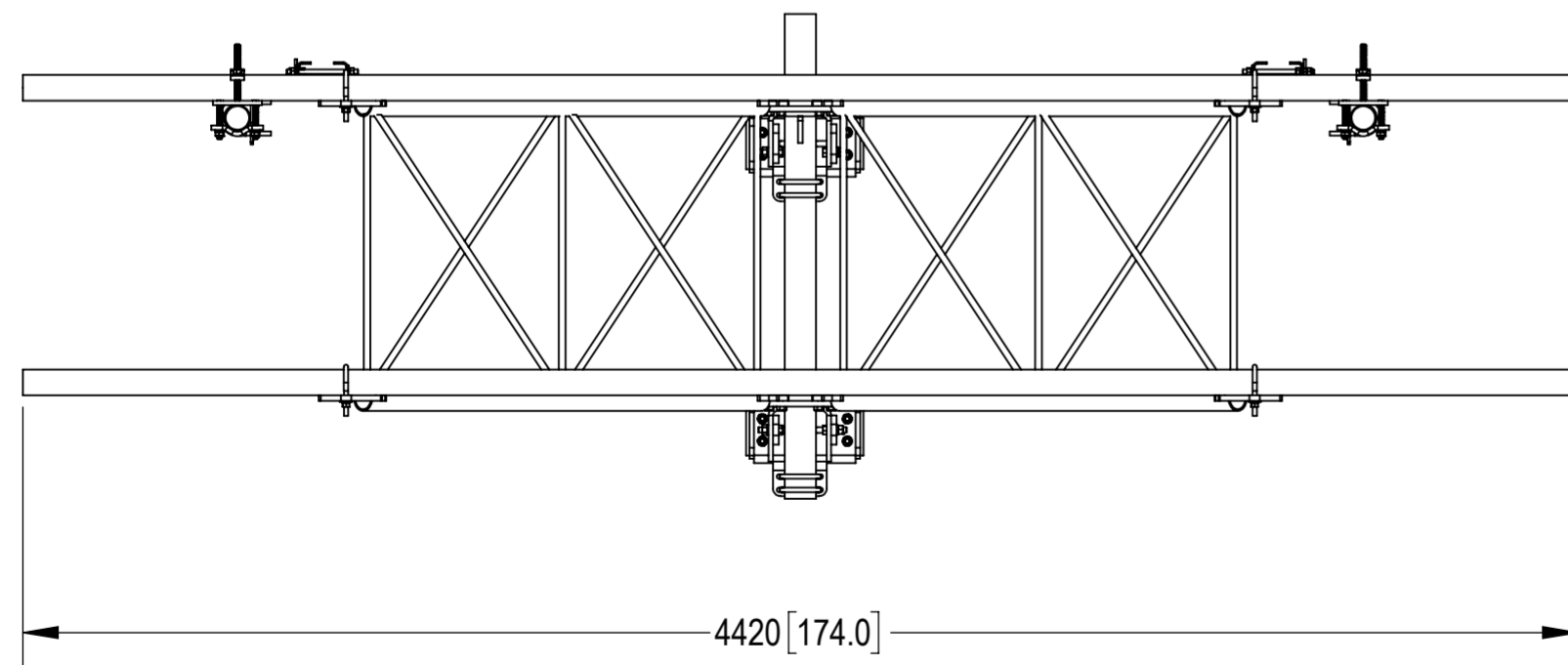
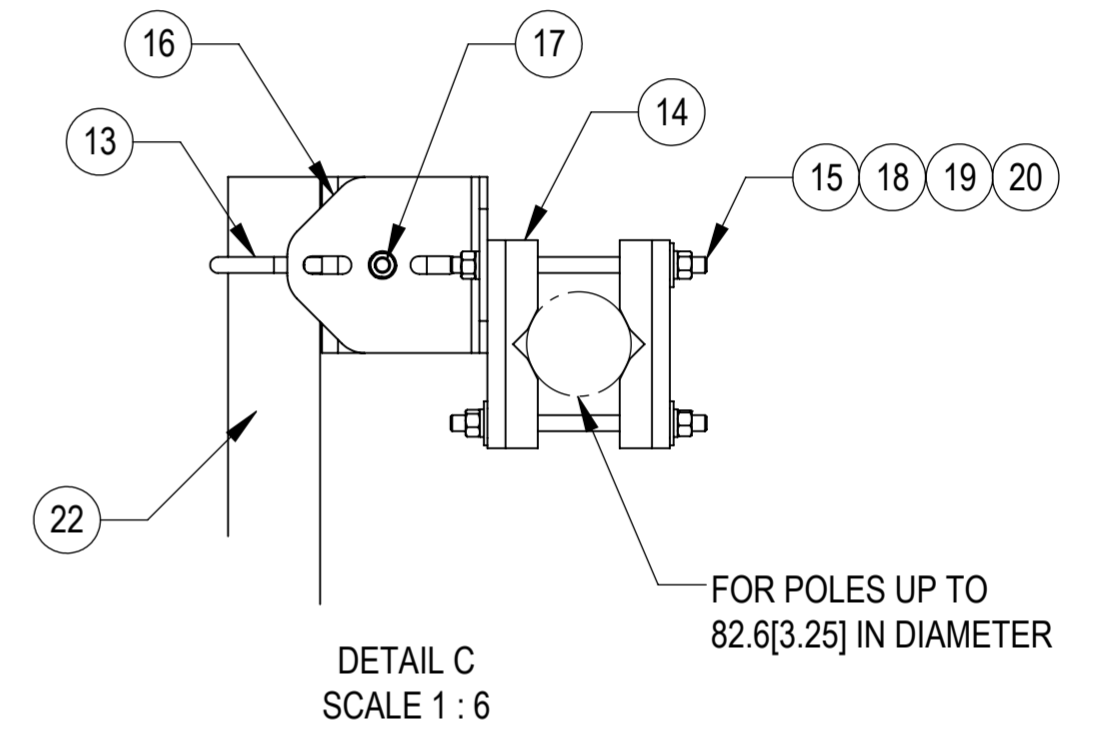
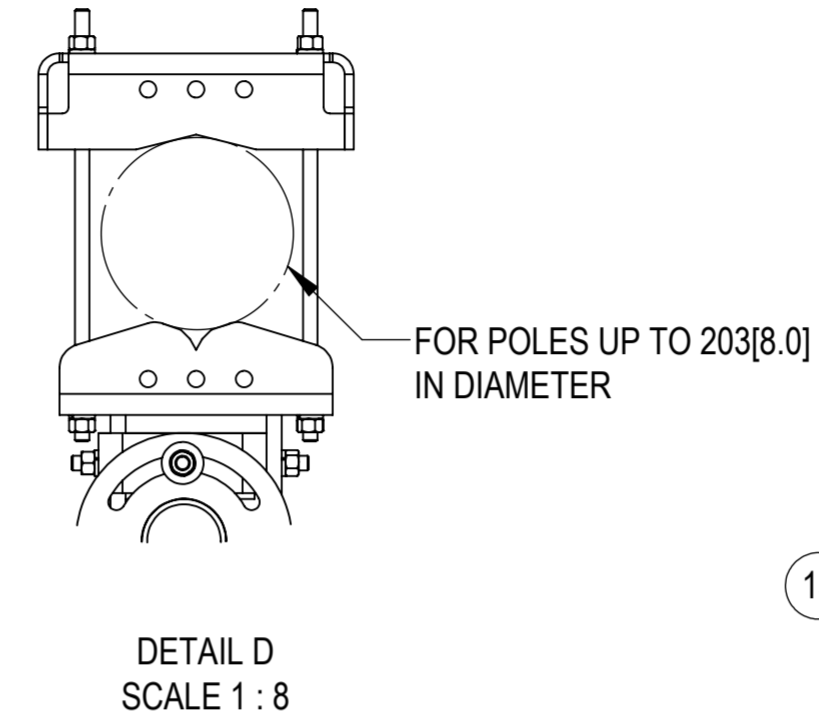
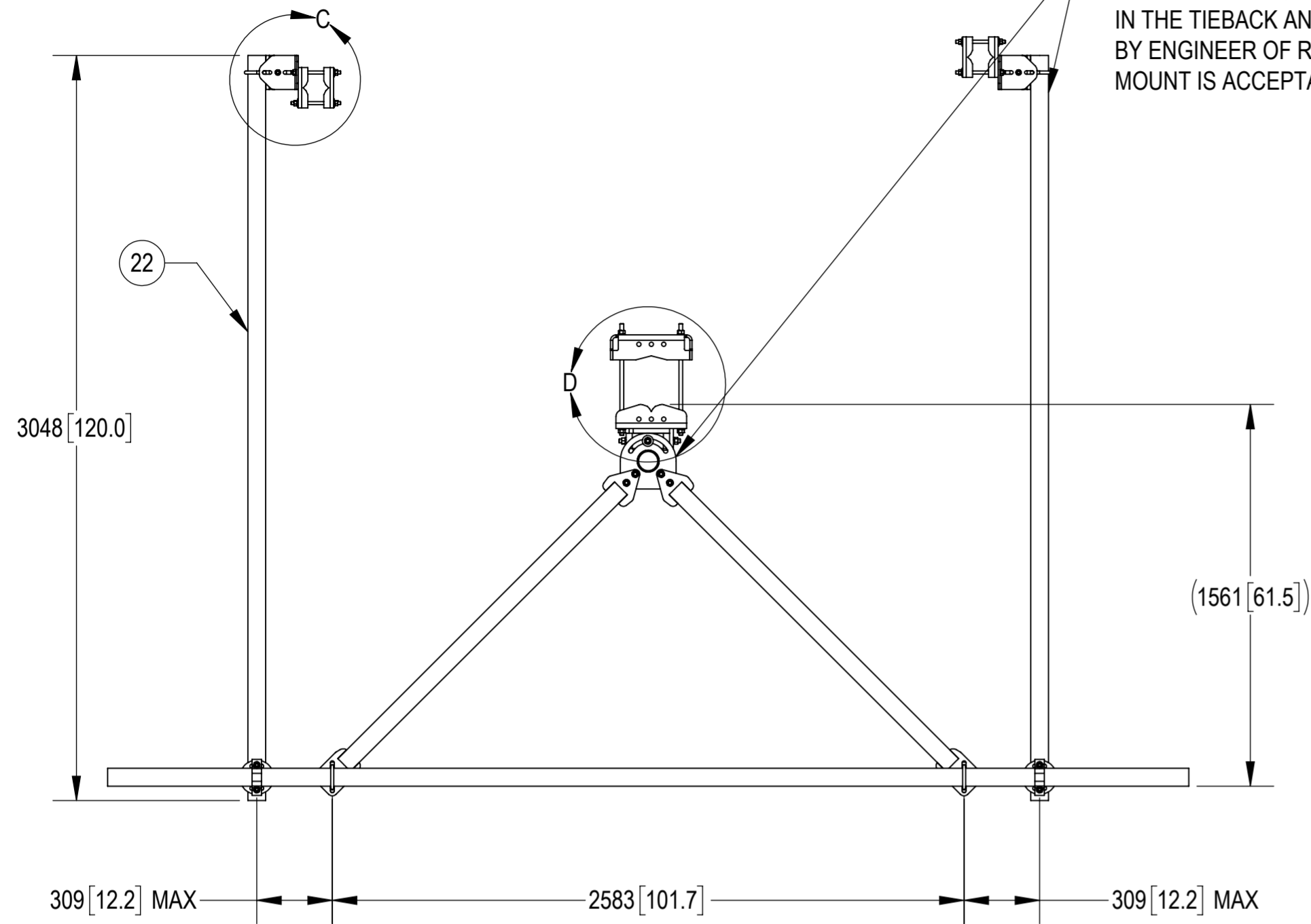
COMPONENT PART NUMBERS PROVIDED FOR ASSEMBLY PURPOSES;  
INDIVIDUAL COMPONENTS MAY BE SHIPPED AS PARTS WITHIN AN INCLUDED KIT.

ITEM	PART NO.	DESCRIPTION	QTY.	WEIGHT	NOTE NO.
1	SFG23180-00	ARM, STANDOFF, SFG23	2	63.30 LBS	
2	SFG2206	WELDMENT, ARM MOUNT	1	55.67 LBS	
3	GB-05225	5/8" X 2-1/4" GALV BOLT KIT	14	0.28 LBS	
4	SFG2380	WELDMENT, HD, TOP TAPER BRACKET	1	22.99 LBS	
5	SFG2381	WELDMENT, HD, LOWER TOWER LEG BRACKET	1	17.49 LBS	
6	SFG2289	G2 RRU BACK CLAMP, HD	2	18.65 LBS	
7	SFG2386	WELDMENT, SFG2 AZIMUTH BRACKET	2	10.59 LBS	
8	MT-382-18	5/8" X 18" THREADED ROD	8	1.43 LBS	
9	GWL-05	5/8" GALV LOCK WASHER	16	0.03 LBS	
10	GN-05	5/8" GALV HEX NUT	24	38.14 LBS	
11	GUB-4355	1/2" X 3-5/8" X 5" GALV U-BOLT	4	0.71 LBS	
12	GWF-05	5/8" GALV FLAT WASHER, 1.7OD	2	0.06 LBS	
13	GUB-4352	1/2" X 3" X 5-1/4" GALV U-BOLT	6	0.71 LBS	
14	SAB01	FORMED CLAMP	4	1.35 LBS	
15	MT-379-8	1/2" X 8" GALV THREADED ROD	4	0.45 LBS	
16	XAU01	ANGLE, CROSSOVER, 1.9-3.5" X 1.9-3.5" OD	4	2.98 LBS	
17	GB-04145	1/2" X 1-1/2" GALV BOLT KIT	2	0.130 LBS	
18	GWF-04	1/2" GALV FLAT WASHER	8	0.04 LBS	
19	GWL-04	1/2" GALV LOCK WASHER	10	0.01 LBS	
20	GN-04	1/2" GALV HEX NUT	10	0.00 LBS	
21	XP-R	CROSSOVER PLATE, ROUND, UP TO 3.5" OD	2	6.20 LBS	
22	MT546120120	PIPE, 2.875"OD X 120"	2	16073.48 LBS	
23	MT546174276	PIPE, 2.875"OD X 174"	2	50569.70 LBS	

COMMSCOPE, INC. OF NORTH CAROLINA				
TITLE SECTOR FRAME 14'6" FACE, NO AP				
SIZE <b>A2</b>	SCALE <b>1:16</b>	DOCUMENT NO. <b>SFG23HDXL-14-B</b>		
DRAWING		VERSION	STATUS	REVISION
SHEET		00	RW	A
3 OF 6				

© 2023 CommScope, Inc. Confidential

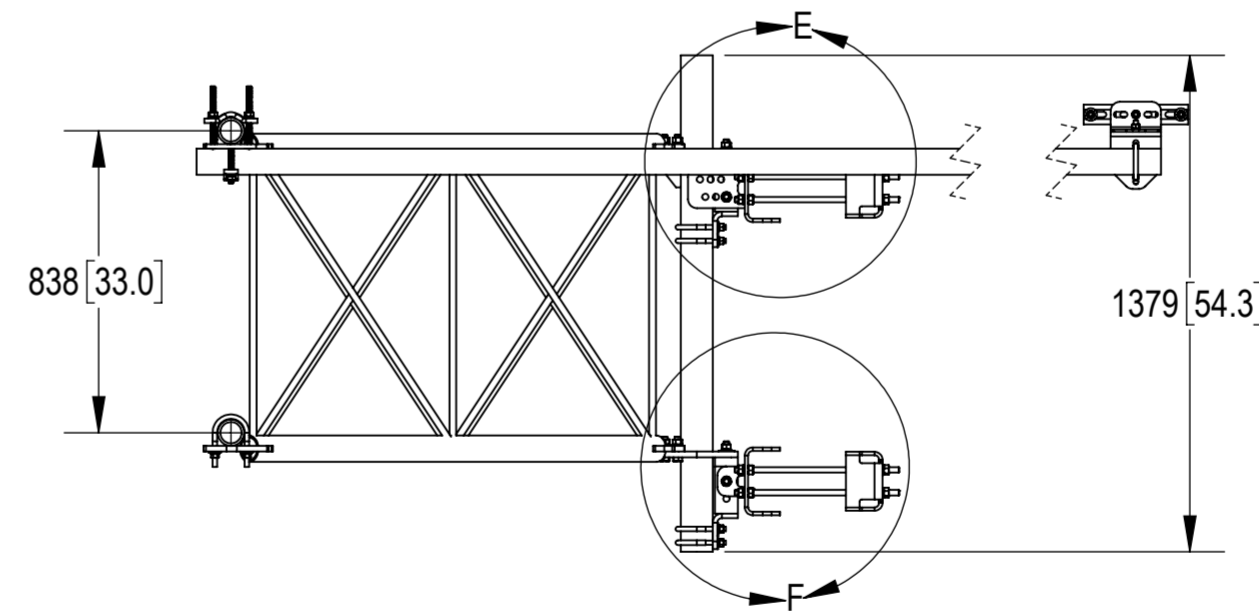
TIEBACK MUST BE CONNECTED TO A RIGID MEMBER THAT PROVIDES ADEQUATE SUPPORT WITHIN THE LIMITS NOTED IN THE TIEBACK ANGLE RANGE DETAIL. UNLESS APPROVED BY ENGINEER OF RECORD. SPINE STEM OF NEIGHBORING MOUNT IS ACCEPTABLE.



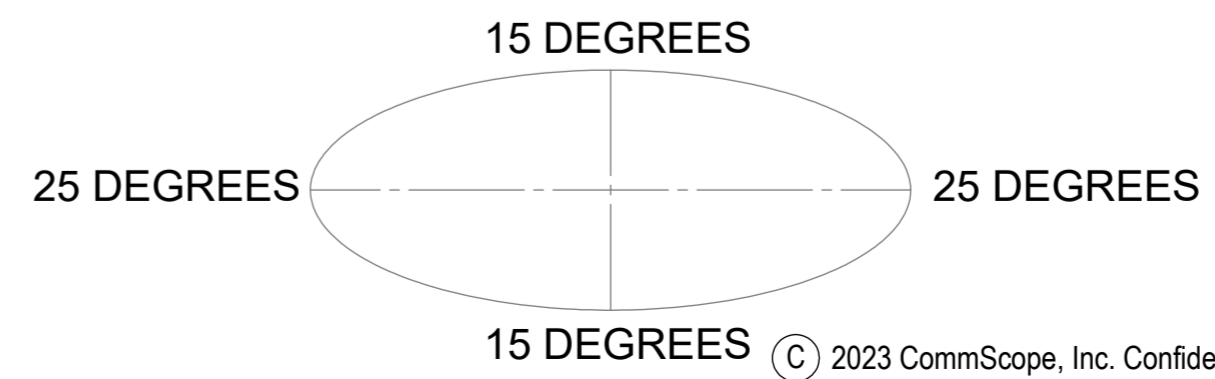
TOP

↓

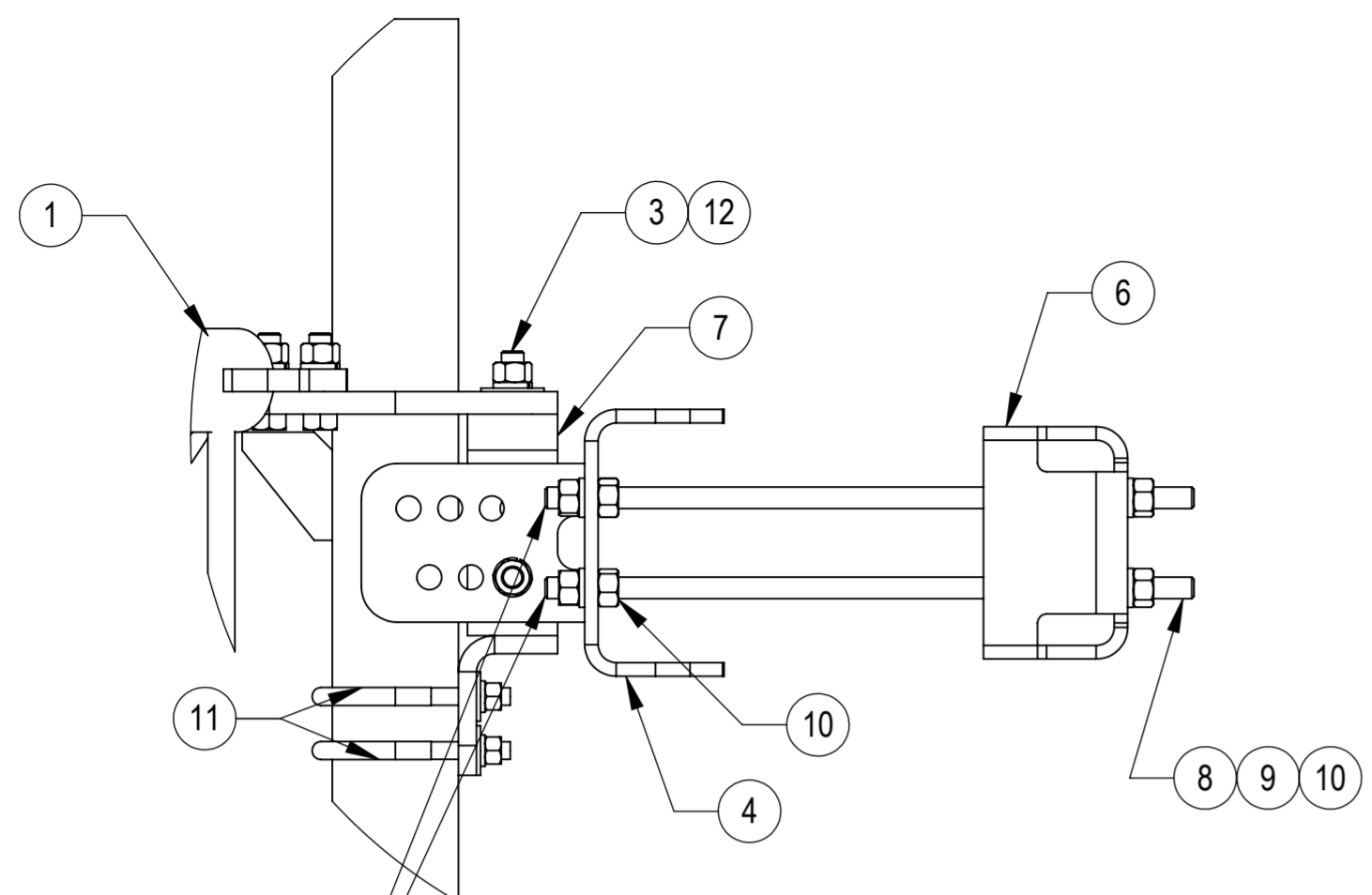
BOTTOM



**ALLOWABLE TIEBACK ANGLE**  
 +15 DEGREES VERTICAL  
 ±25 DEGREES HORIZONTAL

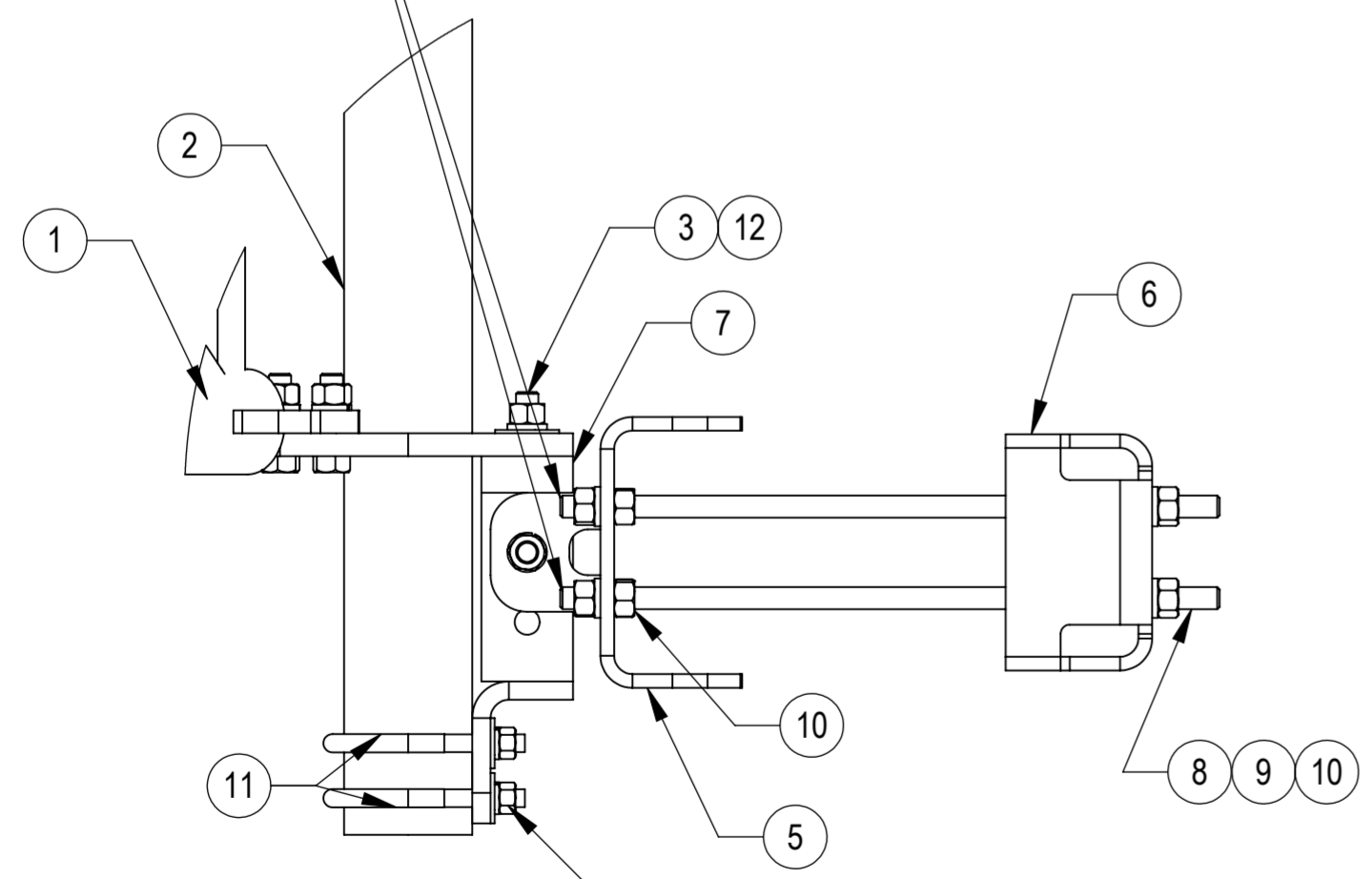


COMMSCOPE, INC. OF NORTH CAROLINA			
TITLE SECTOR FRAME 14'6" FACE, NO AP			
SIZE <b>A2</b>	SCALE <b>1:21</b>	DOCUMENT NO. <b>SFG23HDXL-14-B</b>	
DRAWING			SHEET
VERSION 00	STATUS RW	REVISION A	4 OF 6



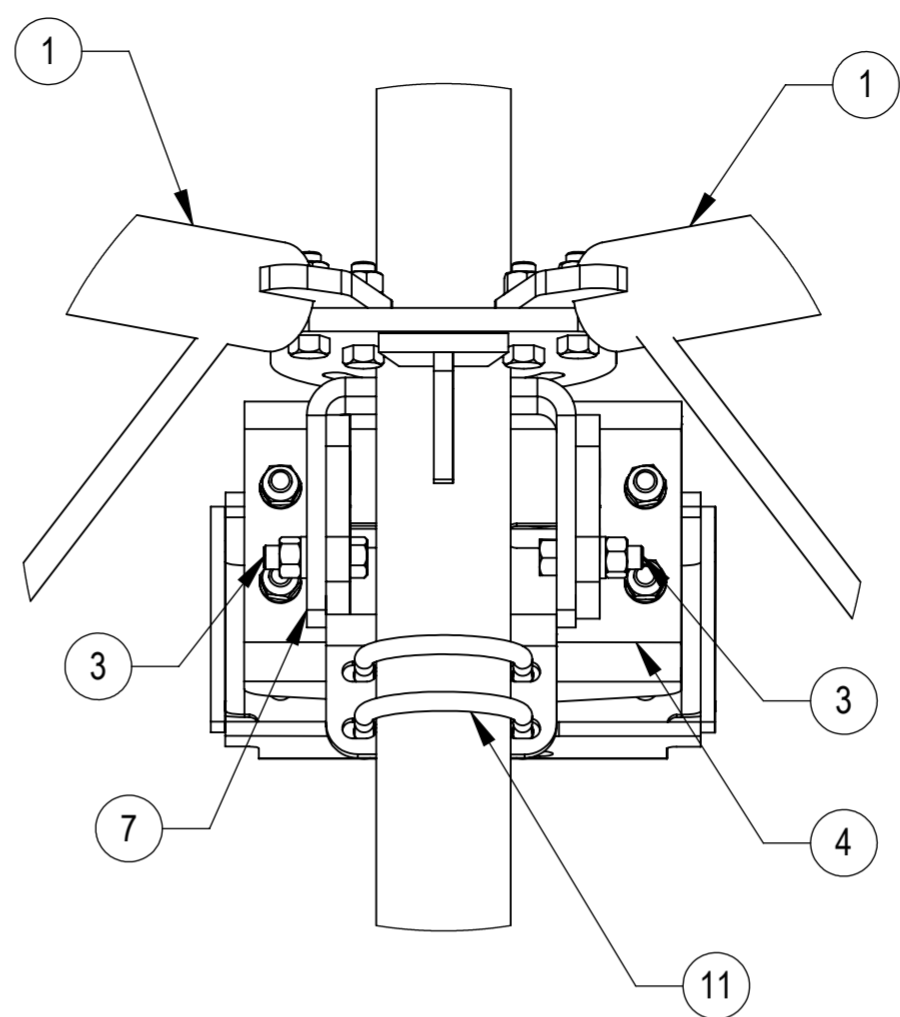
DETAIL E  
SCALE 1 : 5

THE THREADED ROD CAN ONLY EXPOSE 4 TO 7 THREADS ON ONE SIDE OF THE BRACKET, WHICH IS TO PREVENT INTERFERENCE WITH THE SIDE BOLTS

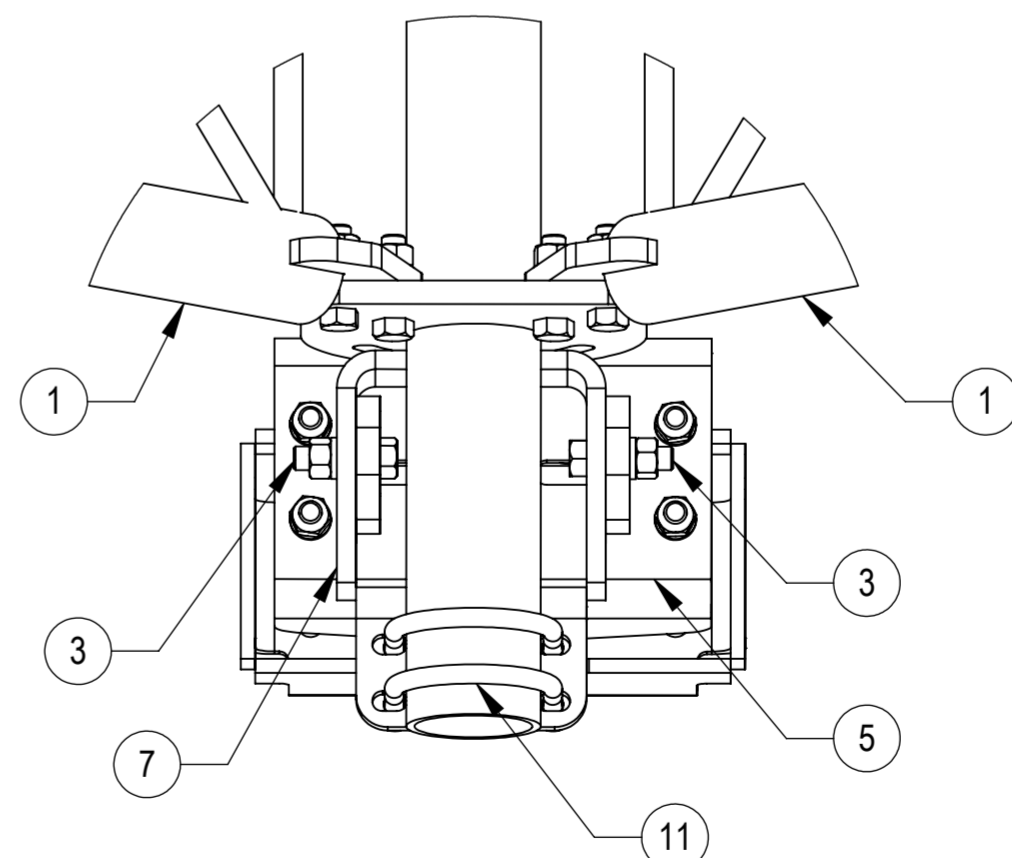


DETAIL F  
SCALE 1 : 5

DO NOT OVER TIGHTEN, END OF POLE CAN BE DAMAGED



DETAIL ISO TOP ROTATED VIEW  
DETAIL G  
SCALE 1 : 5

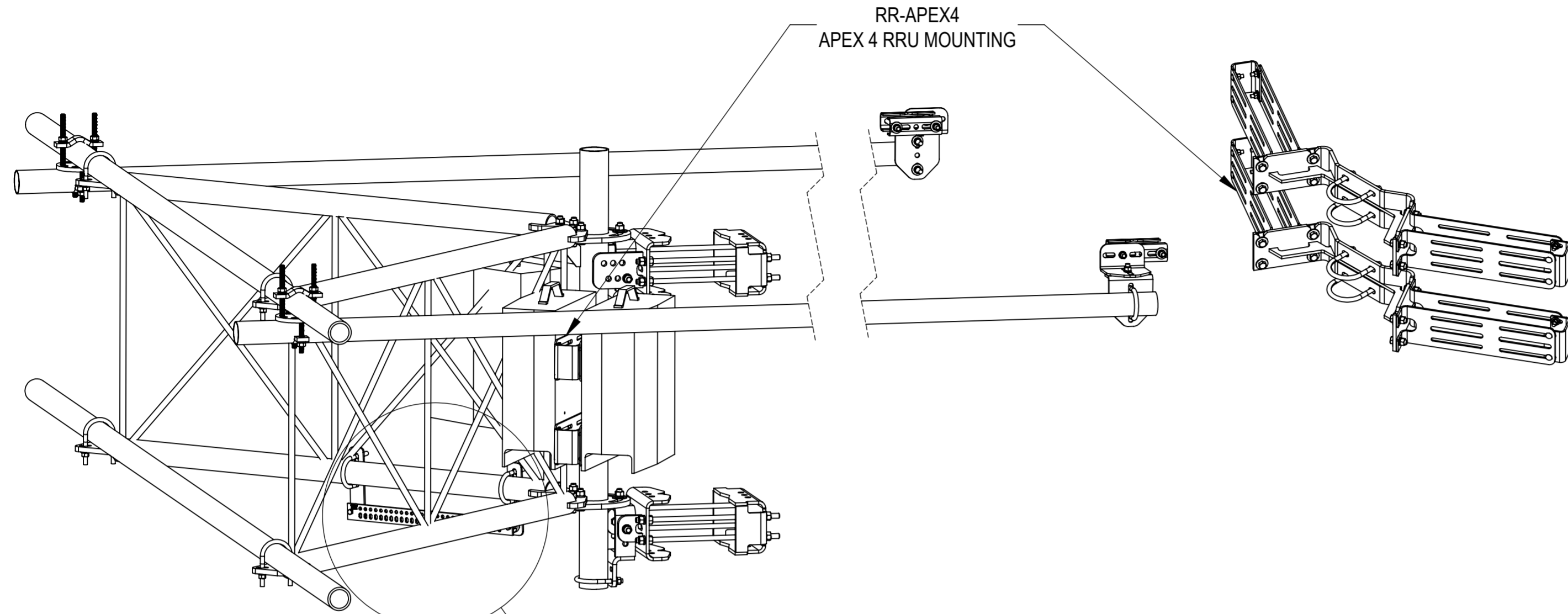


DETAIL ISO BOTTOM ROTATED VIEW  
DETAIL H  
SCALE 1 : 5

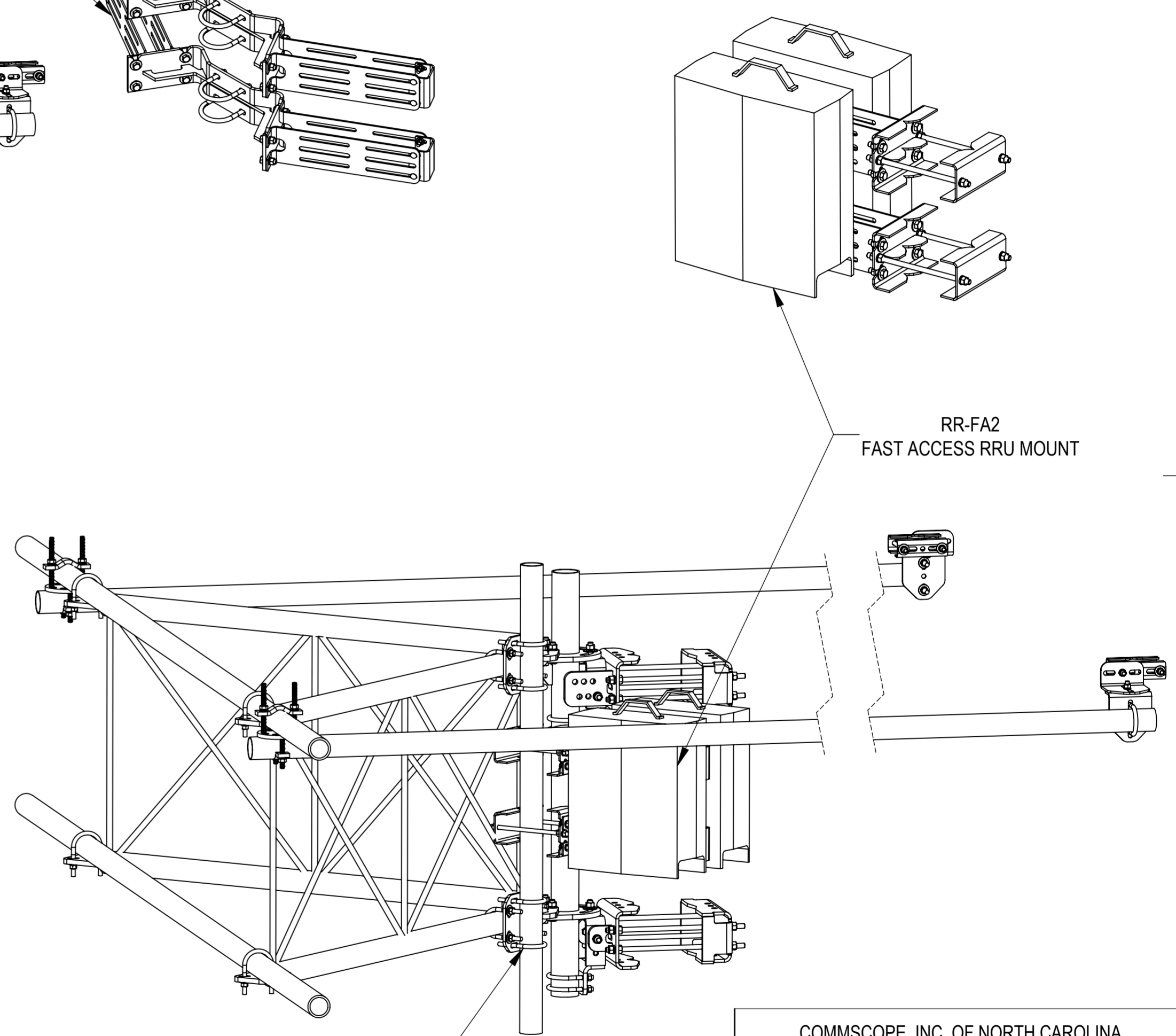
COMMSCOPE, INC. OF NORTH CAROLINA				
TITLE SECTOR FRAME 14'6" FACE, NO AP				
SIZE <b>A2</b>	SCALE <b>1:21</b>	DOCUMENT NO. <b>SFG23HDXL-14-B</b>		
		DRAWING		SHEET
		VERSION	STATUS	REVISION
		00	RW	A
				5 OF 6

**ACCESSORIES ORDERED SEPARATELY:**

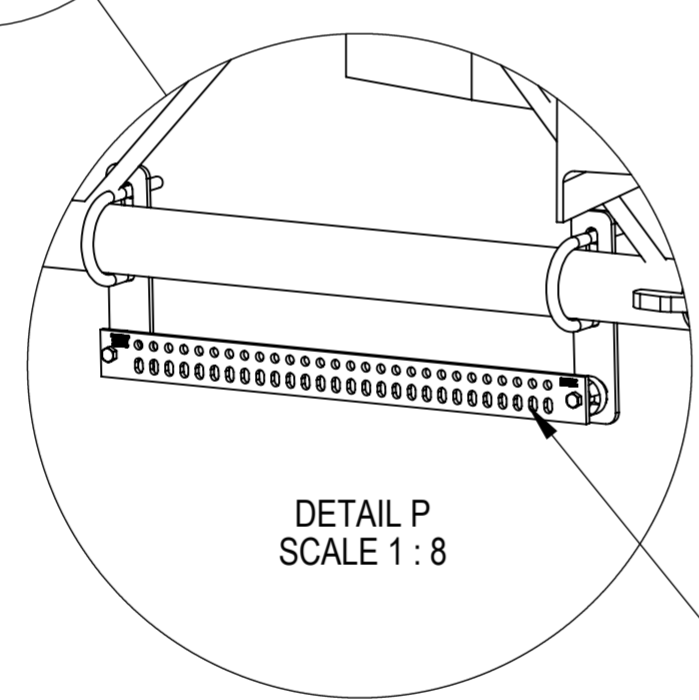
RR-APEX4  
APEX 4 RRU MOUNTING



RR-FA2  
FAST ACCESS RRU MOUNT



DETAIL P  
SCALE 1 : 8

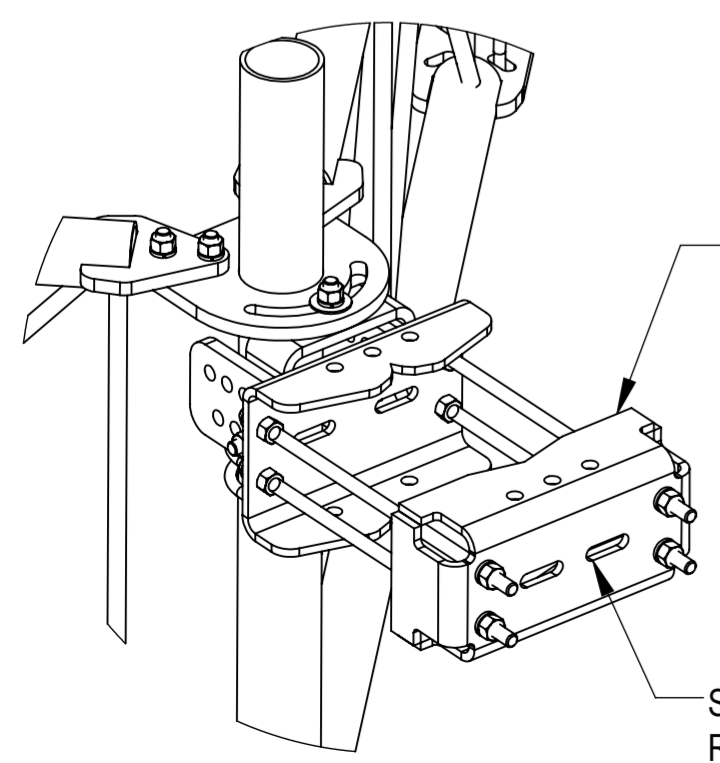


GBSF278  
BUSS BAR MOUNT KIT

PIPE AND HARDWARE  
SOLD SEPARATELY

SLOTS ALLOW FOR MOUNTING OF  
RRU OR OTHER EQUIPMENT

6 SFG2289



COMMSCOPE, INC. OF NORTH CAROLINA				
TITLE SECTOR FRAME 14'6" FACE, NO AP				
SIZE A2	SCALE 1:12	DOCUMENT NO. SFG23HDXL-14-B		
		DRAWING		SHEET
		VERSION	STATUS	REVISION
		00	RW	A
				6 OF 6