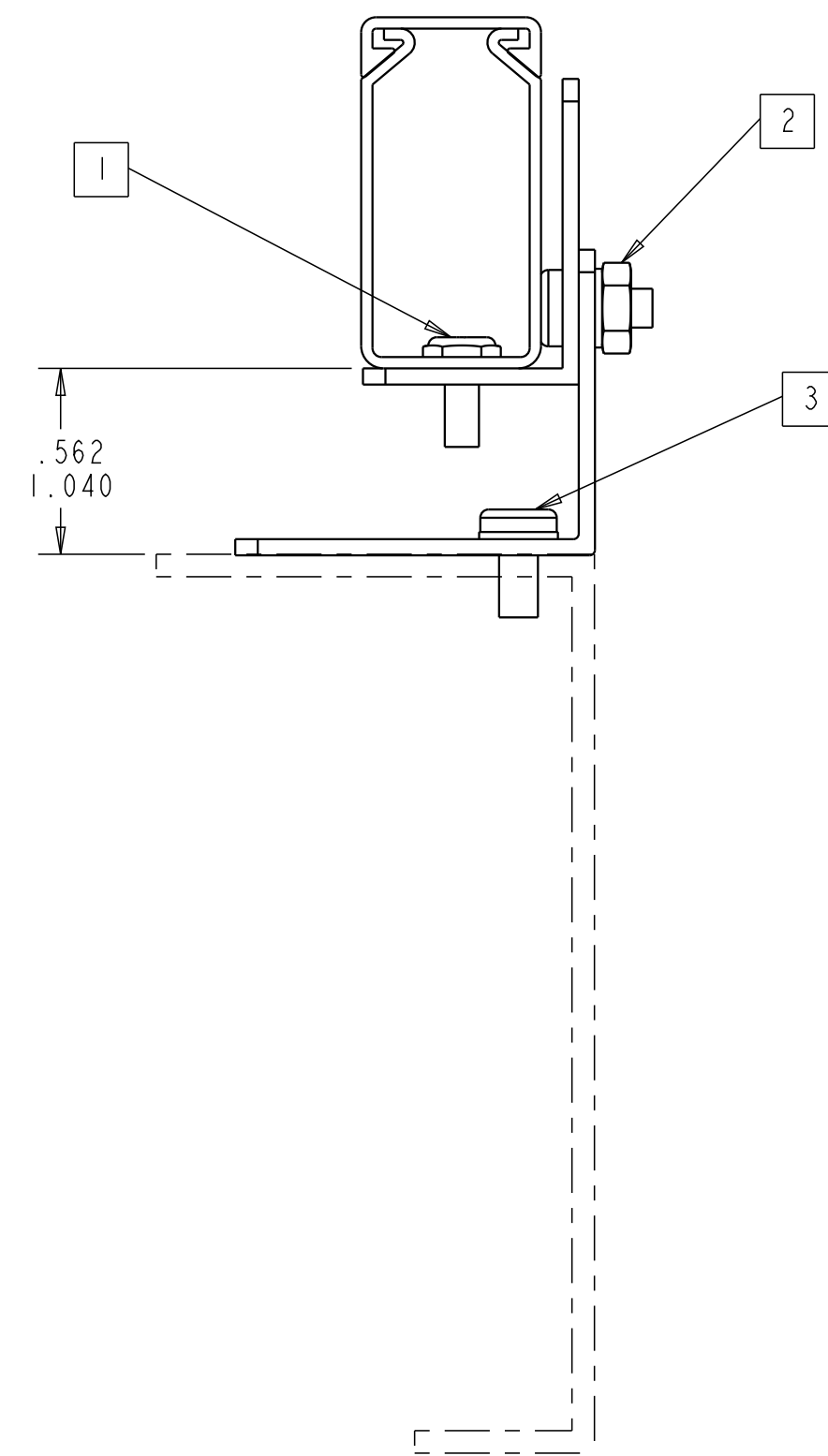
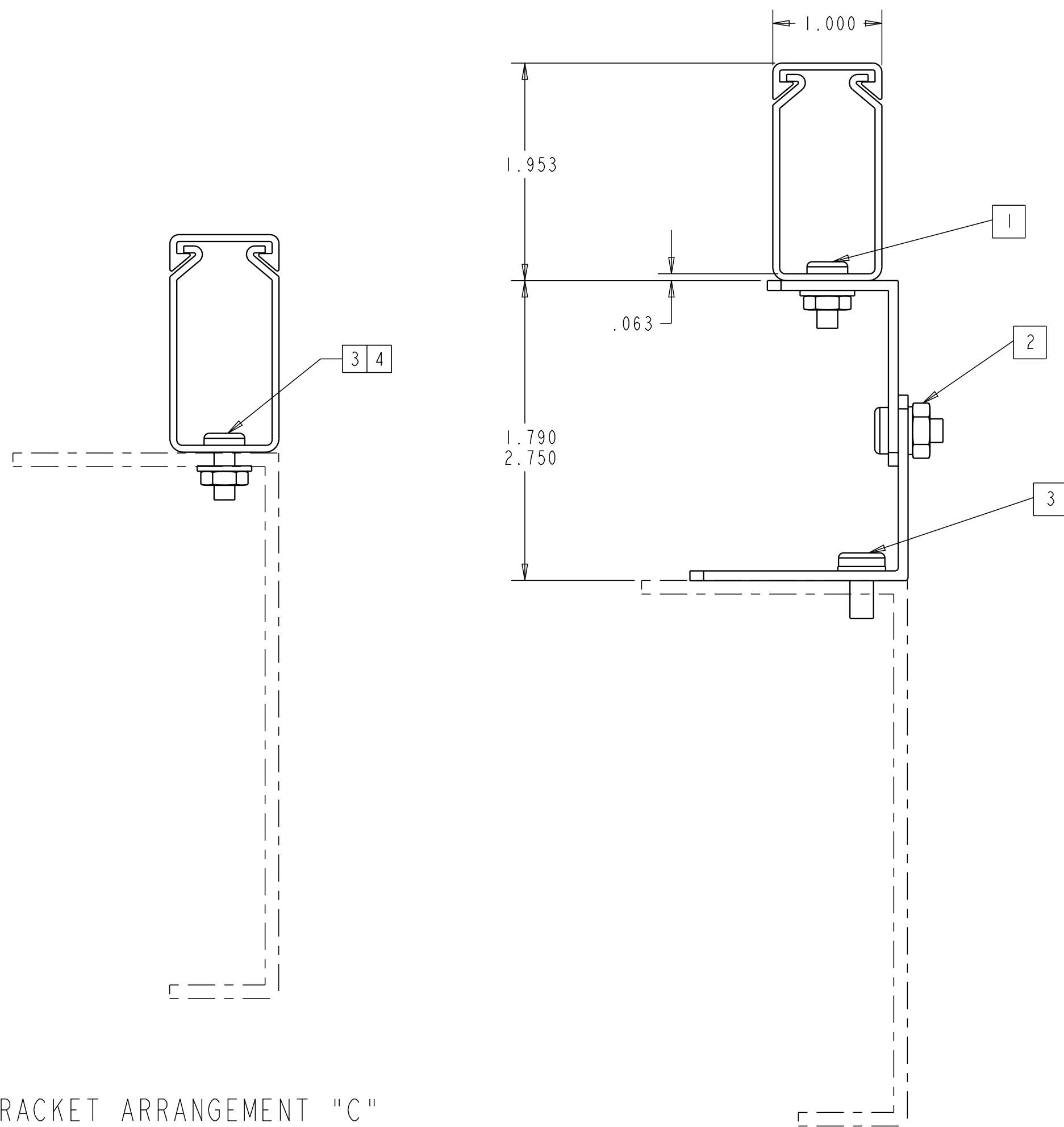


REV.	MCO	DWN	DATE
C	20240363	AED	20-MAY-08
D	40032067MCO	OAVL	08-JUL-16

KEY
 ——— COMPONENTS INCLUDED IN KIT
 - - - COMPONENTS NOT INCLUDED IN KIT

QTY	PART DESCRIPTION
1	1" X 2" VERTICAL DUCT
1	DUCT COVER
6	GROMMET STRIPS
5	LARGE DUCT MOUNTING BRACKETS
5	#12 X 1/2 THREAD CUTTING SCREWS
5	#12 X 1/2 SCREWS
10	#12 FLATWASHERS
5	#12 HEX NUTS
5	#10 X 3/8 SCREWS
5	#10 FLATWASHERS
5	#10 HEX NUTS
1	HOSE END CLAMP
2	#6 X 3/8 PAN HEAD SCREWS
2	#6 STAR-LOCK-WASHERS
2	#6 HEX NUTS
5	SMALL DUCT MOUNTING BRACKETS



BRACKET ARRANGEMENT "C"

BRACKET ARRANGEMENT "B"

BRACKET ARRANGEMENT "A"

NOTES:

1. #10 SCREW, NUT, AND WASHER.
2. #12 SCREW, NUT, AND WASHER.
3. #12 THREAD CUTTING SCREW AND WASHER.
4. DRILL MOUNTING SLOTS ON 1X2 VERTICAL DUCT TO .25 DIA.

COMMSCOPE, INC.

© 2016 COMMSCOPE, INC. CONFIDENTIAL
 NOTICE: THESE DRAWINGS AND SPECIFICATIONS
 ARE THE PROPRIETARY PROPERTY OF
 COMMSCOPE, INC. AND MAY BE USED ONLY FOR THE
 SPECIFIC PURPOSE AUTHORIZED IN WRITING BY
 COMMSCOPE, INC.

ALL DIMS AND TOLERANCES .XX:±N/A
 ARE INCHES UNLESS .XXX:±N/A
 OTHERWISE SPECIFIED ANGULAR:±N/A

DO NOT SCALE DRAWING

ENGR: P. NAULT
 DWN: D. LOCH

FGSB-KTWI-E	BLACK
FGS-KTWI-E	YELLOW
CATALOG NUMBER	COLOR

TITLE FIBERGUIDES VERT.
 DUCT, COVER & BRKT KIT
 1" X 2" (INST DWG)

DRAWING NUMBER 4-29000-2631

SHT. 1 OF 1

DIMENSIONS IN INCHES
 THIRD ANGLE PROJECTION