

RRV4-65B-R6H4-V3



12-port sector antenna, 4x 694–960 and 8x 1695–2690 MHz, 65° HPBW, 6x RET

- All Internal RET actuators are connected in “Cascaded SRET” configuration
- Uses the 4.3-10 connector which is 40 percent smaller than the 7-16 DIN connector

General Specifications

Antenna Type	Sector
Band	Multiband
Color	Light Gray (RAL 7035)
Grounding Type	RF connector inner conductor and body grounded to reflector and mounting bracket
Performance Note	Outdoor usage
Radome Material	Fiberglass, UV resistant
Reflector Material	Aluminum
RF Connector Interface	4.3-10 Female
RF Connector Location	Bottom
RF Connector Quantity, mid band	8
RF Connector Quantity, low band	4
RF Connector Quantity, total	12

Remote Electrical Tilt (RET) Information

RET Hardware	CommRET v2
RET Interface	8-pin DIN Female 8-pin DIN Male
RET Interface, quantity	1 female 1 male
Input Voltage	10–30 Vdc
Internal RET	High band (4) Low band (2)
Power Consumption, active state, maximum	8 W
Power Consumption, idle state, maximum	1 W
Protocol	3GPP/AISG 2.0 (Single RET)

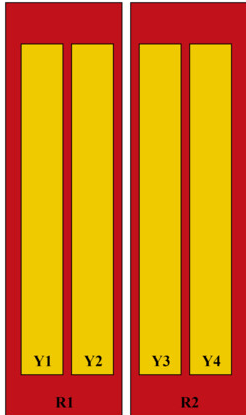
Dimensions

Width	498 mm 19.606 in
--------------	--------------------

RRV4-65B-R6H4-V3

Depth	197 mm 7.756 in
Length	2000 mm 78.74 in
Net Weight, antenna only	32.4 kg 71.43 lb

Array Layout



Array ID	Frequency (MHz)	RF Connector	RET (SRET)	AISG No.	AISG RET UID
R1	694-960	1 - 2	1	AISG1	CPxxxxxxxxxxxxxxxxR1
R2	694-960	3 - 4	2	AISG1	CPxxxxxxxxxxxxxxxxR2
Y1	1695-2690	5 - 6	3	AISG1	CPxxxxxxxxxxxxxxxxY1
Y2	1695-2690	7 - 8	4	AISG1	CPxxxxxxxxxxxxxxxxY2
Y3	1695-2690	9 - 10	5	AISG1	CPxxxxxxxxxxxxxxxxY3
Y4	1695-2690	11 - 12	6	AISG1	CPxxxxxxxxxxxxxxxxY4

(Sizes of colored boxes are not true depictions of array sizes)

Port Configuration



Electrical Specifications

Impedance	50 ohm
Operating Frequency Band	1695 – 2690 MHz 694 – 960 MHz
Polarization	±45°
Total Input Power, maximum	900 W @ 50 °C

Electrical Specifications

RRV4-65B-R6H4-V3

	R1,R2	R1,R2	R1,R2	Y1-Y4	Y1-Y4	Y1-Y4	Y1-Y4
Frequency Band, MHz	694–790	790–890	880–960	1695–1920	1920–2180	2300–2500	2500–2690
RF Port	1-4	1-4	1-4	5-12	5-12	5-12	5-12
Gain at Mid Tilt, dBi	14.9	15.3	15.4	17.1	18.1	18.6	18.7
Beamwidth, Horizontal, degrees	70	65	65	70	63	57	56
Beamwidth, Vertical, degrees	10.7	9.4	8.8	6.3	5.7	5	4.8
Beam Tilt, degrees	2–14	2–14	2–14	2–12	2–12	2–12	2–12
USLS (First Lobe), dB	16	15	15	17	18	22	21
Front-to-Back Ratio at 180°, dB	31	31	32	34	32	32	32
Isolation, Cross Polarization, dB	27	27	27	27	27	27	27
Isolation, Inter-band, dB	26	26	26	26	26	26	26
VSWR Return loss, dB	1.5 14.0	1.5 14.0	1.5 14.0	1.5 14.0	1.5 14.0	1.5 14.0	1.5 14.0
PIM, 3rd Order, 2 x 20 W, dBc	-153	-153	-153	-153	-153	-153	-153
Input Power per Port at 50°C, maximum, watts	300	300	300	250	250	250	250

Electrical Specifications, BASTA

	694–790	790–890	880–960	1695–1920	1920–2180	2300–2500	2500–2690
Frequency Band, MHz	694–790	790–890	880–960	1695–1920	1920–2180	2300–2500	2500–2690
Gain by all Beam Tilts, average, dBi	14.8	15.1	15.2	17.1	18	18.5	18.5
Gain by all Beam Tilts Tolerance, dB	±0.7	±0.4	±0.7	±0.8	±0.7	±0.4	±0.5
Beamwidth, Horizontal Tolerance, degrees	±7	±4	±5	±6	±8	±4	±4
Beamwidth, Vertical Tolerance, degrees	±0.8	±0.6	±0.7	±0.4	±0.4	±0.2	±0.2
USLS, beampeak to 20° above beampeak, dB	15	14	14	17	16	16	15
Front-to-Back Total Power at 180° ± 30°, dB	21	21	20	27	26	27	28
CPR at Boresight, dB	20	22	21	20	22	21	21
CPR at Sector, dB	12	8	7	10	8	7	4

Mechanical Specifications

Effective Projective Area (EPA), frontal	0.65 m ² 6.997 ft ²
Effective Projective Area (EPA), lateral	0.2 m ² 2.153 ft ²

RRV4-65B-R6H4-V3

Wind Loading @ Velocity, frontal	688.0 N @ 150 km/h (154.7 lbf @ 150 km/h)
Wind Loading @ Velocity, lateral	210.0 N @ 150 km/h (47.2 lbf @ 150 km/h)
Wind Loading @ Velocity, maximum	826.0 N @ 150 km/h (185.7 lbf @ 150 km/h)
Wind Loading @ Velocity, rear	474.0 N @ 150 km/h (106.6 lbf @ 150 km/h)
Wind Speed, maximum	241 km/h (150 mph)

Packaging and Weights

Width, packed	565 mm 22.244 in
Depth, packed	318 mm 12.52 in
Length, packed	2121 mm 83.504 in
Weight, gross	44.5 kg 98.106 lb

Regulatory Compliance/Certifications

Agency	Classification
ISO 9001:2015	Designed, manufactured and/or distributed under this quality management system

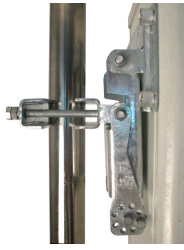
Included Products

- BSAMNT-3 – Wide Profile Antenna Downtilt Mounting Kit for 2.4 - 4.5 in (60 - 115 mm) OD round members. Kit contains one scissor top bracket set and one bottom bracket set.

* Footnotes

Performance Note	Severe environmental conditions may degrade optimum performance
-------------------------	-----------------------------------------------------------------

BSAMNT-3



Wide Profile Antenna Downtilt Mounting Kit for 2.4 - 4.5 in (60 - 115 mm) OD round members. Kit contains one scissor top bracket set and one bottom bracket set.

Product Classification

Product Type Downtilt mounting kit

General Specifications

Application Outdoor

Color Silver

Dimensions

Compatible Diameter, maximum 115 mm | 4.528 in

Compatible Diameter, minimum 60 mm | 2.362 in

Weight, net 6.2 kg | 13.669 lb

Material Specifications

Material Type Galvanized steel

Packaging and Weights

Included Brackets | Hardware

Packaging quantity 1

Weight, gross 6.4 kg | 14.11 lb

Regulatory Compliance/Certifications

Agency	Classification
CE	Compliant with the relevant CE product directives
CHINA-ROHS	Below maximum concentration value
ISO 9001:2015	Designed, manufactured and/or distributed under this quality management system
REACH-SVHC	Compliant as per SVHC revision on www.commscope.com/ProductCompliance
ROHS	Compliant
UK-ROHS	Compliant

BSAMNT-3

