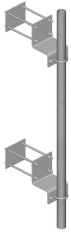


MT-221



Adjustable Wall Mount for hollow walls, 6 in stand-off

Product Classification

Product Type Wall mount kit

General Specifications

Mounting Hollow walls

Dimensions

Height 203.2 mm | 8 in

Width 203.2 mm | 8 in

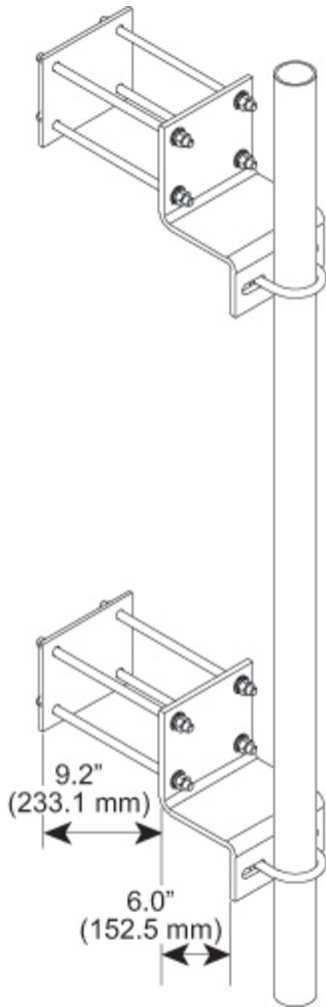
Length 152.4 mm | 6 in

Pipe Outer Diameter 114.3 mm | 4.5 in | 60.96 mm | 2.4 in | 73.66 mm | 2.9 in | 88.9 mm | 3.5 in

Stand-off Distance 152.4 mm | 6 in

MT-221

Outline Drawing



Material Specifications

Material Type Hot dip galvanized steel

Mechanical Specifications

Wind Rating For Specifications, please contact your local ANDREW representative

Packaging and Weights

Included Backing plates or anchors | Wall brackets (2)

Packaging quantity 2

Weight, net 31.1 kg | 68.564 lb

MT-221

Regulatory Compliance/Certifications

Agency	Classification
ISO 9001:2015	Designed, manufactured and/or distributed under this quality management system

* Footnotes

Wind Rating	BWS—Base Wind Speed; FBC—Florida Building Code
--------------------	--