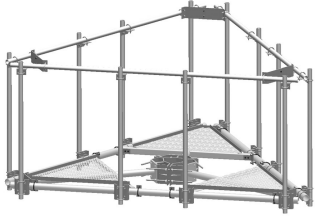


MT-195-14



Upper Support Rail Kit for co-location platforms, 14 ft face

Product Classification

Product Type Support rail kit

General Specifications

Mounting Pipe, 60.3 mm (2-3/8 in.) OD

Sectors, quantity 3

Dimensions

Height 185.42 mm | 7.3 in

Face Width 4.42 m | 14.5 ft

Width 4,419.6 mm | 174 in

Pipe Outer Diameter 60.96 mm | 2.4 in

Material Specifications

Material Type Hot dip galvanized steel

Packaging and Weights

Included Crossover angles (12) | Hardware | Rail

Packaging quantity 1

Weight, net 115.984 kg | 255.7 lb

Regulatory Compliance/Certifications

Agency

ISO 9001:2015

Classification

Designed, manufactured and/or distributed under this quality management system

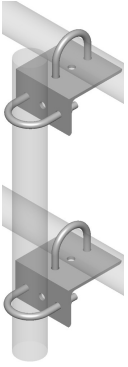
Included Products

- XA-1919 – Crossover Angle, 1.9 in to 1.9 in OD
- XA-1920 – Crossover Angle, 1.9 in to 2.38 in OD

MT-195-14

- XA-2020 – Crossover Angle, 2-3/8 in to 2-3/8 in OD
- XA-2030 – Crossover Angle, 2.38 in to 2.88 in OD
- XA-2035 – Crossover Angle, 2.38 in to 3.5 in OD
- XA-3030 – Crossover Angle, 2.88 in to 2.88 in OD

XA-1919



Crossover Angle, 1.9 in to 1.9 in OD

Product Classification

Product Type Mounting kit

General Specifications

Tower Taper Non-tapered

Dimensions

Height 152.4 mm | 6 in

Width 152.4 mm | 6 in

Length 152.4 mm | 6 in

Mounting Diameter, maximum 48.26 mm | 1.9 in

Mounting Diameter, minimum 48.26 mm | 1.9 in

Material Specifications

Material Type Hot dip galvanized steel

Packaging and Weights

Included Angle | U-bolts

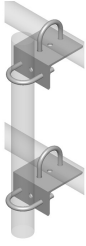
Packaging quantity 2

Weight, net 1.8 kg | 3.968 lb

Regulatory Compliance/Certifications

Agency	Classification
ISO 9001:2015	Designed, manufactured and/or distributed under this quality management system

XA-1920



Crossover Angle, 1.9 in to 2.38 in OD

Product Classification

Product Type Mounting kit

General Specifications

Tower Taper Non-tapered

Dimensions

Height 152.4 mm | 6 in

Width 152.4 mm | 6 in

Length 152.4 mm | 6 in

Mounting Diameter, maximum 60.96 mm | 2.4 in

Mounting Diameter, minimum 48.26 mm | 1.9 in

Material Specifications

Material Type Hot dip galvanized steel

Packaging and Weights

Included Angle | U-bolts

Packaging quantity 2

Weight, net 1.8 kg | 3.968 lb

Regulatory Compliance/Certifications

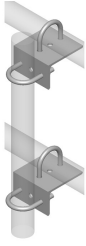
Agency

ISO 9001:2015

Classification

Designed, manufactured and/or distributed under this quality management system

XA-2020



Crossover Angle, 2-3/8 in to 2-3/8 in OD

Product Classification

Product Type Mounting kit

General Specifications

Mounting Pipe, 60.3 mm (2-3/8 in) OD

Tower Taper Non-tapered

Dimensions

Height 152.4 mm | 6 in

Width 152.4 mm | 6 in

Length 152.4 mm | 6 in

Mounting Diameter, maximum 60.96 mm | 2.4 in

Mounting Diameter, minimum 60.96 mm | 2.4 in

Material Specifications

Material Type Hot dip galvanized steel

Packaging and Weights

Included Angle | U-bolts

Packaging quantity 2

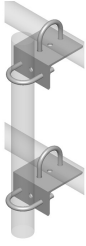
Weight, net 1.8 kg | 3.968 lb

Regulatory Compliance/Certifications

Agency	Classification
CHINA-ROHS	Below maximum concentration value
ISO 9001:2015	Designed, manufactured and/or distributed under this quality management system
ROHS	Compliant
UK-ROHS	Compliant



XA-2030



Crossover Angle, 2.38 in to 2.88 in OD

Product Classification

Product Type Mounting kit

General Specifications

Tower Taper Non-tapered

Dimensions

Height 152.4 mm | 6 in

Width 152.4 mm | 6 in

Length 152.4 mm | 6 in

Mounting Diameter, maximum 73.66 mm | 2.9 in

Mounting Diameter, minimum 60.96 mm | 2.4 in

Material Specifications

Material Type Hot dip galvanized steel

Packaging and Weights

Included Angle | U-bolts

Packaging quantity 2

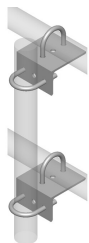
Weight, net 1.8 kg | 3.968 lb

Regulatory Compliance/Certifications

Agency	Classification
CHINA-ROHS	Above maximum concentration value
ISO 9001:2015	Designed, manufactured and/or distributed under this quality management system
ROHS	Compliant/Exempted
UK-ROHS	Compliant/Exempted



XA-2035



Crossover Angle, 2.38 in to 3.5 in OD

Product Classification

Product Type Mounting kit

General Specifications

Tower Taper Non-tapered

Dimensions

Height 152.4 mm | 6 in

Width 152.4 mm | 6 in

Length 152.4 mm | 6 in

Mounting Diameter, maximum 88.9 mm | 3.5 in

Mounting Diameter, minimum 60.96 mm | 2.4 in

Material Specifications

Material Type Hot dip galvanized steel

Packaging and Weights

Included Angle | U-bolts

Packaging quantity 2

Weight, net 1.8 kg | 3.968 lb

Regulatory Compliance/Certifications

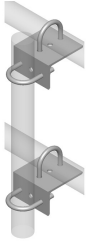
Agency

ISO 9001:2015

Classification

Designed, manufactured and/or distributed under this quality management system

XA-3030



Crossover Angle, 2.88 in to 2.88 in OD

Product Classification

Product Type Mounting kit

General Specifications

Tower Taper Non-tapered

Dimensions

Height 152.4 mm | 6 in

Width 152.4 mm | 6 in

Length 152.4 mm | 6 in

Mounting Diameter, maximum 73.66 mm | 2.9 in

Mounting Diameter, minimum 73.66 mm | 2.9 in

Material Specifications

Material Type Hot dip galvanized steel

Packaging and Weights

Included Angle | U-bolts

Packaging quantity 2

Weight, net 1.8 kg | 3.968 lb

Regulatory Compliance/Certifications

Agency	Classification
ISO 9001:2015	Designed, manufactured and/or distributed under this quality management system