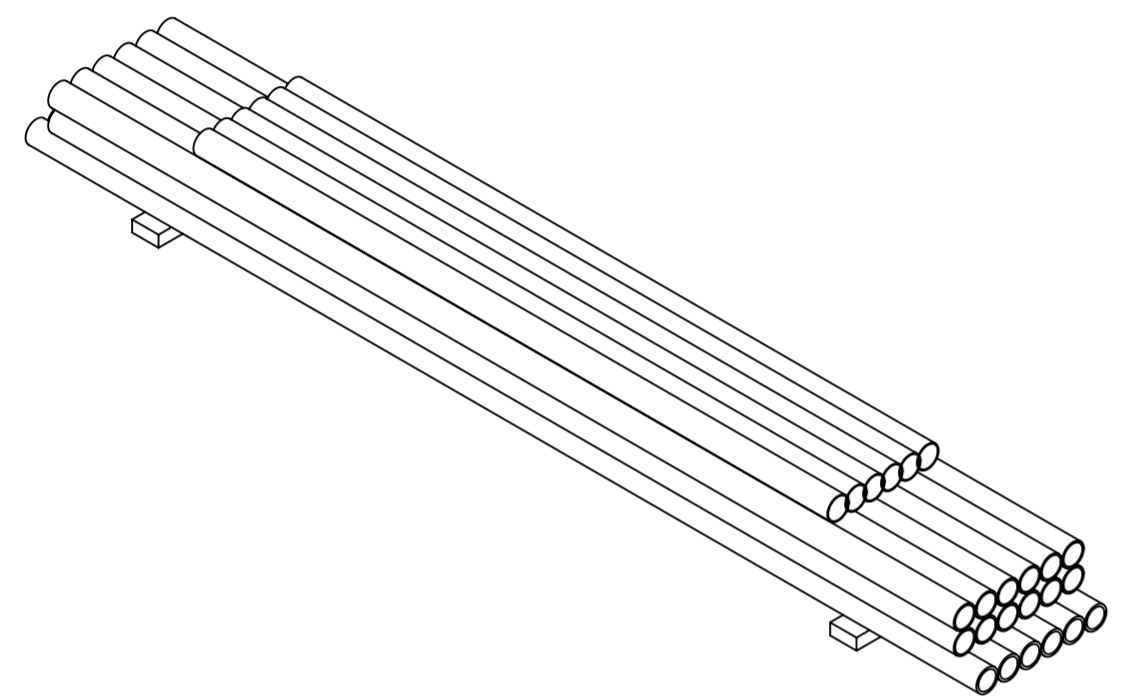


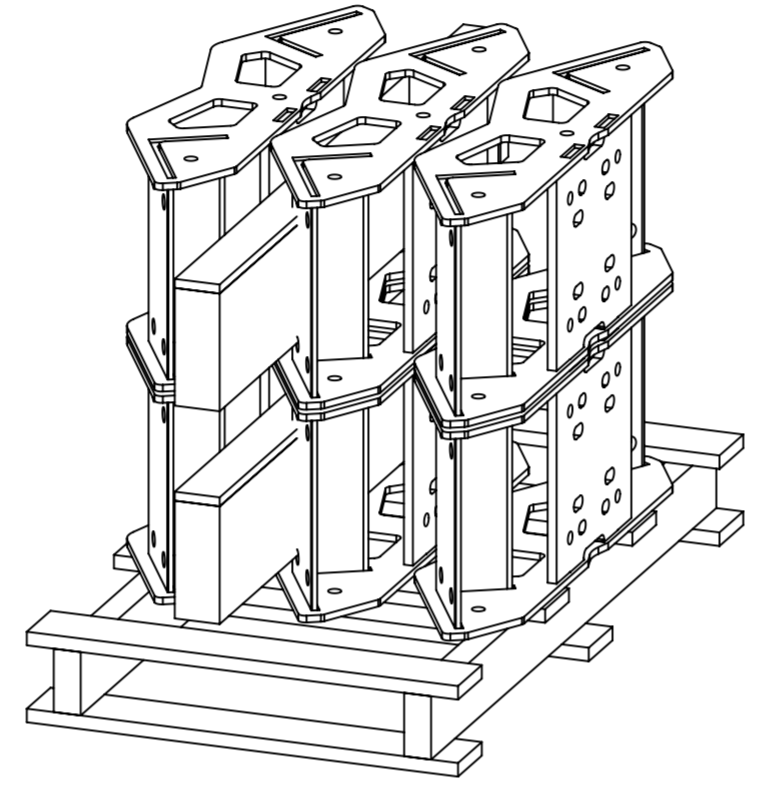
- 1.0 GENERAL NOTES
 1.1 ALL IMPERIAL DIMENSIONS ARE IN BRACKETS [X.XX]
 1.2 MARK PART WITH IDENTIFICATION NUMBER
 1.3 FOR PATENT INFO: <https://www.cs-pat.com>

- 2.0 DESIGN NOTES
 2.1 ANY HAZARDS OR OBSTRUCTIONS TO THE CLIMBING FACILITY AND SAFETYCLIMB MUST BE IDENTIFIED PRIOR TO INSTALLING THE APPURTENANCE. ADDITIONAL PRODUCTS MAY BE REQUIRED TO MAINTAIN THE INTEGRITY OF THE SAFETY CLIMB. DURING INSTALLATION, TEMPORARY AND/OR PERMANENT PRECAUTIONARY MEASURES SHOULD BE TAKEN TO PRESERVE THE CLIMBING FACILITY AND/OR SAFETY CLIMB.
 2.2 FITS MONOPOLES 381[15] TO 1270[50] OD.
 2.3 MIN RECOMMENDED POLE THICKNESS 4.78[0.188]
 3.0 MANUFACTURING/SPECIAL REQUIREMENTS
 3.1 FOR LOADING SEE ENGINEERING SPEC SHEET.
 3.2 TIGHTEN ALL BOLTS SECURING FLAT PLATES BY THE TURN-OF-NUT METHOD. TIGHTEN ALL U-BOLTS USING TURN-OF-NUT METHOD WITH ATTENTION TO LEAVE EQUAL DISTANCE AND EQUAL FORCE ON EACH LEG OF THE U-BOLT.
 4.0 TEST
 5.0 PACKAGING
 5.1 PACKAGING SHALL MEET COMMSCOPE REQUIREMENTS PER DOCUMENT IS-PL-3005.
 5.2 PRINTED DOCUMENT TO BE PLACED INSIDE POLYBAG AND THEN IN SHIPPING CONTAINER.
 5.3 EXTRA HARDWARE MAYBE SUPPLIED, BAGGED AND SHIPPED.

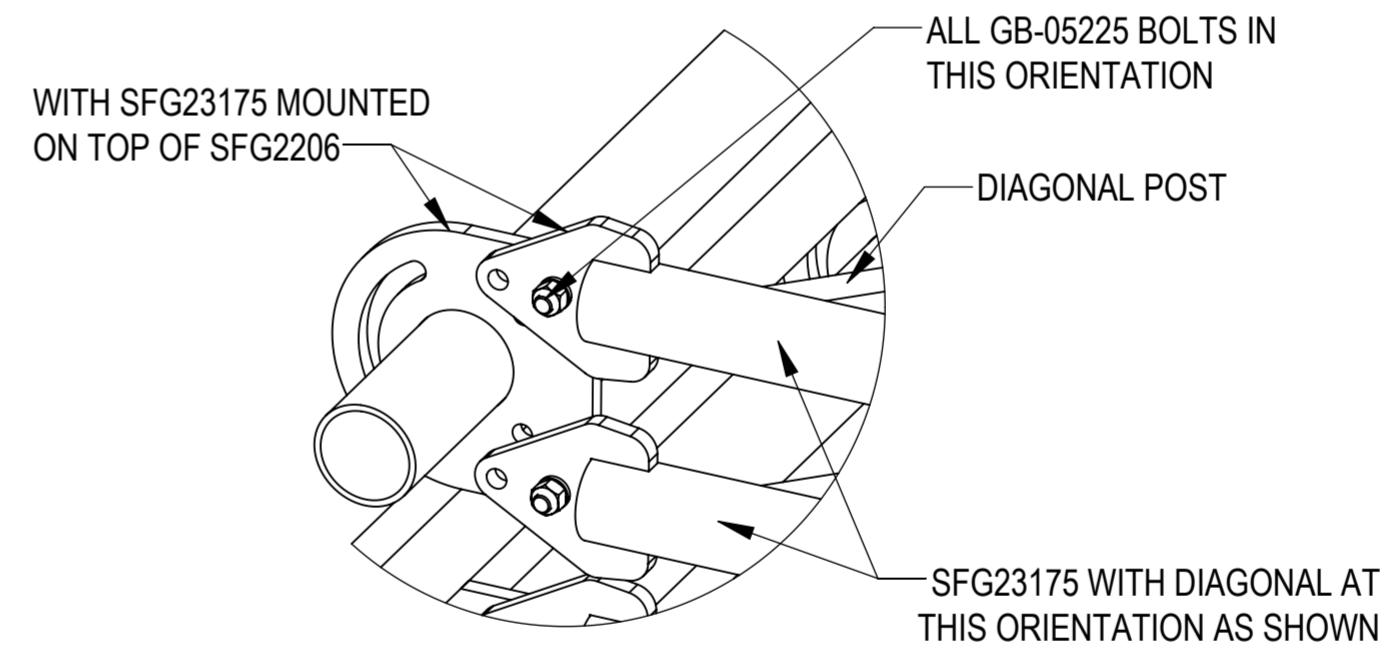
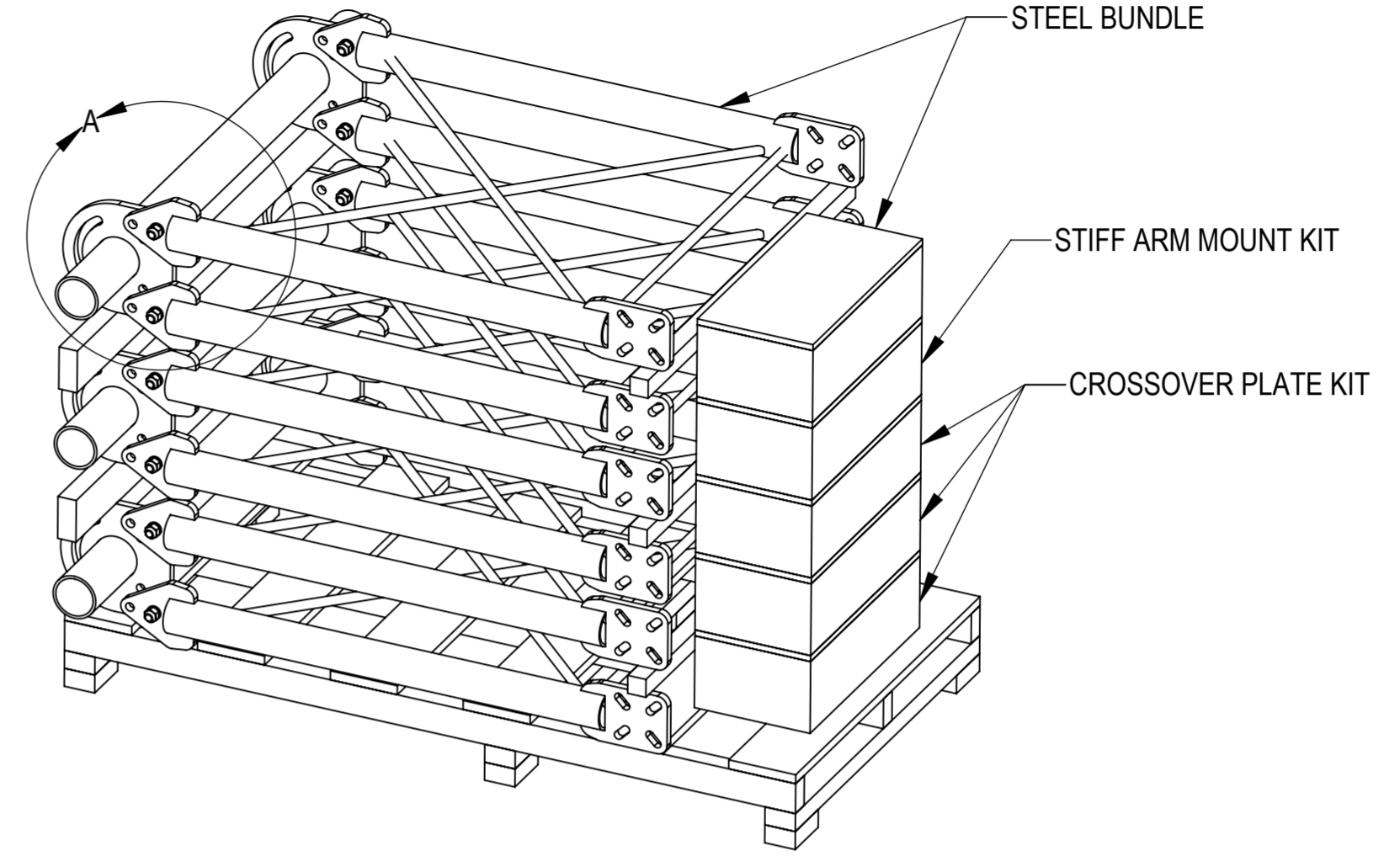
REVISIONS			
REV.	DESCRIPTION	DATE	APPROVED
A	INITIAL RELEASE	JL1183 01JUN22	BA1025 40149022CMO



PIPE BUNDEL



RING MOUNT



DETAIL A
SCALE 1 : 6

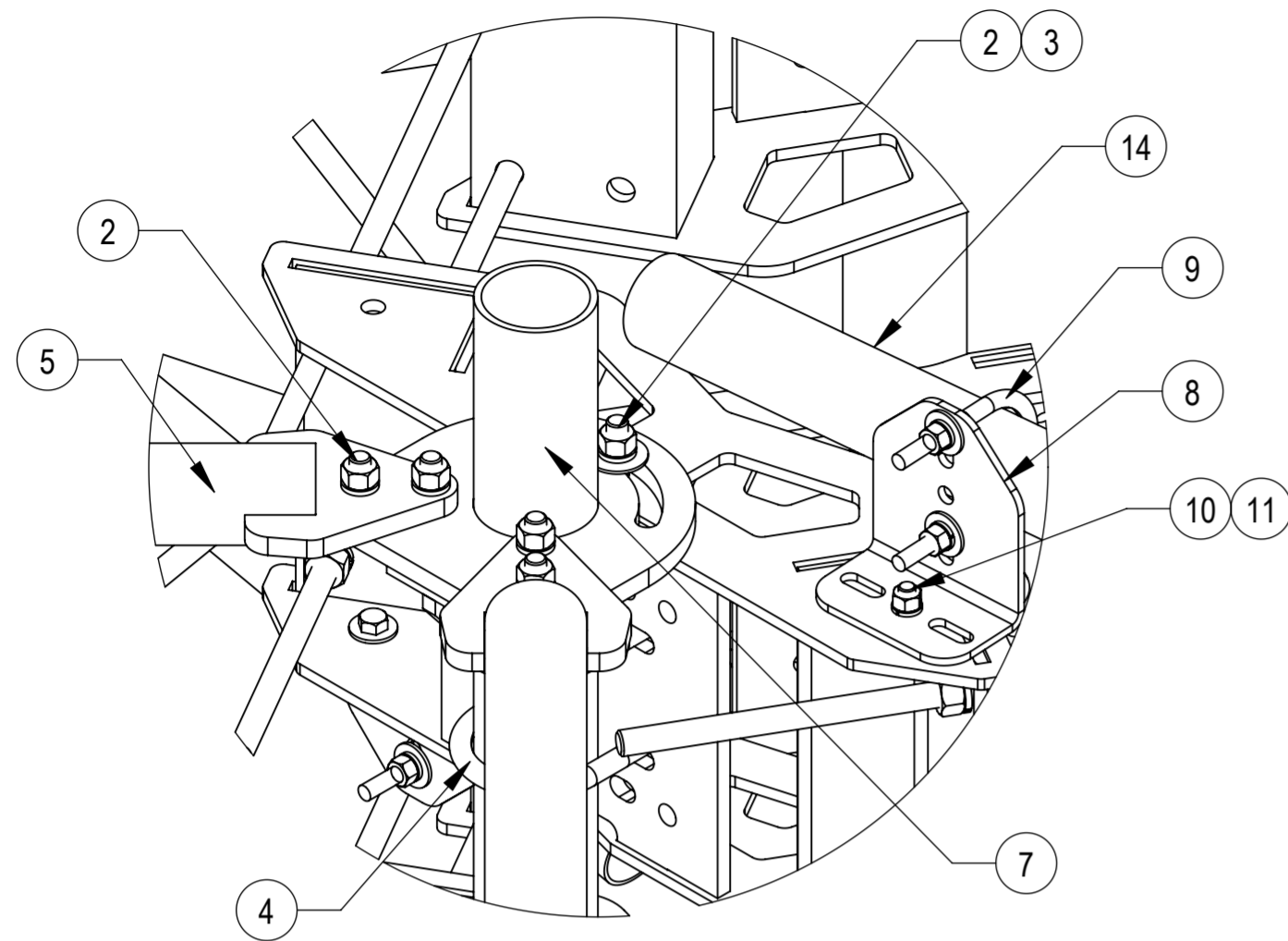
TOP LEVEL ZNSK COMPONENTS

PART NO.	DESCRIPTION	RING MOUNT	STIFF ARM MOUNT KIT	CROSSOVER PLATE KIT	STEEL BUNDLE	PIPE BUNDLE
MCG23HDX-10M12120	G23HDX MP, 10' FACE, (12) 120" AP	MC-RM1550-3D	MCG23HDX-HK02	XP25258	MCG23HDX-SB01	PB12TEK0607B0610P
MCG23HDX-10M12126	G23HDX MP, 10' FACE, (12) 126" AP	MC-RM1550-3D	MCG23HDX-HK02	XP25258	MCG23HDX-SB01	PB0607B1210K0610P
MCG23HDX-10M1296	G23HDX MP, 10' FACE, (12) 96" AP	MC-RM1550-3D	MCG23HDX-HK02	XP25258	MCG23HDX-SB01	PB0607B1208K0610P
MCG23HDX-10M9120	G23HDX MP, 10' FACE, (9) 120" AP	MC-RM1550-3D	MCG23HDX-HK02	XP25256	MCG23HDX-SB01	PB09TEK0607B0610P
MCG23HDX-10M9126	G23HDX MP, 10' FACE, (9) 126" AP	MC-RM1550-3D	MCG23HDX-HK02	XP25256	MCG23HDX-SB01	PB0607B0910K0610P
MCG23HDX-10M996	G23HDX MP, 10' FACE, (9) 96" AP	MC-RM1550-3D	MCG23HDX-HK02	XP25256	MCG23HDX-SB01	PB0607B0908K0610P
MCG23HDX-10MB	G23HDX MP, 10' FACE, NO AP	MC-RM1550-3D	MCG23HDX-HK02		MCG23HDX-SB01	PB0607B0610P
MCG23HDX-12M12120	G23HDX MP, 12' FACE, (12) 120" AP	MC-RM1550-3D	MCG23HDX-HK02	XP25258	MCG23HDX-SB01	PB12TEK0607B0612P
MCG23HDX-12M12126	G23HDX MP, 12' FACE, (12) 126" AP	MC-RM1550-3D	MCG23HDX-HK02	XP25258	MCG23HDX-SB01	PB0607B1210K0612P
MCG23HDX-12M1296	G23HDX MP, 12' FACE, (12) 96" AP	MC-RM1550-3D	MCG23HDX-HK02	XP25258	MCG23HDX-SB01	PB0607B1208K0612P
MCG23HDX-12M9120	G23HDX MP, 12' FACE, (9) 120" AP	MC-RM1550-3D	MCG23HDX-HK02	XP25256	MCG23HDX-SB01	PB0607B09TEK0612P
MCG23HDX-12M9126	G23HDX MP, 12' FACE, (9) 126" AP	MC-RM1550-3D	MCG23HDX-HK02	XP25256	MCG23HDX-SB01	PB0607B0910K0612P
MCG23HDX-12M996	G23HDX MP, 12' FACE, (9) 96" AP	MC-RM1550-3D	MCG23HDX-HK02	XP25256	MCG23HDX-SB01	PB0607B0908K0612P
MCG23HDX-12MB	G23HDX MP, 12' FACE, NO AP	MC-RM1550-3D	MCG23HDX-HK02		MCG23HDX-SB01	PB0607B0612P
MCG23HDX-14M12120	G23HDX MP, 14' FACE, (12) 120" AP	MC-RM1550-3D	MCG23HDX-HK02	XP25258	MCG23HDX-SB01	PB12TEK0607B0614P
MCG23HDX-14M12126	G23HDX MP, 14' FACE, (12) 126" AP	MC-RM1550-3D	MCG23HDX-HK02	XP25258	MCG23HDX-SB01	PB0607B1210K0614P
MCG23HDX-14M1296	G23HDX MP, 14' FACE, (12) 96" AP	MC-RM1550-3D	MCG23HDX-HK02	XP25258	MCG23HDX-SB01	PB0607B1208K0614P
MCG23HDX-14M15120	G23HDX MP, 14' FACE, (15) 120" AP	MC-RM1550-3D	MCG23HDX-HK02	XP25254+XP25256	MCG23HDX-SB01	PB15TEK0607B0614P
MCG23HDX-14M15126	G23HDX MP, 14' FACE, (15) 126" AP	MC-RM1550-3D	MCG23HDX-HK02	XP25254+XP25256	MCG23HDX-SB01	PB0607B1510K0614P
MCG23HDX-14M1596	G23HDX MP, 14' FACE, (15) 96" AP	MC-RM1550-3D	MCG23HDX-HK02	XP25254+XP25256	MCG23HDX-SB01	PB0607B1508K0614P
MCG23HDX-14MB	G23HDX MP, 14' FACE, NO AP	MC-RM1550-3D	MCG23HDX-HK02		MCG23HDX-SB01	PB0607B0614P

PATENT PENDING

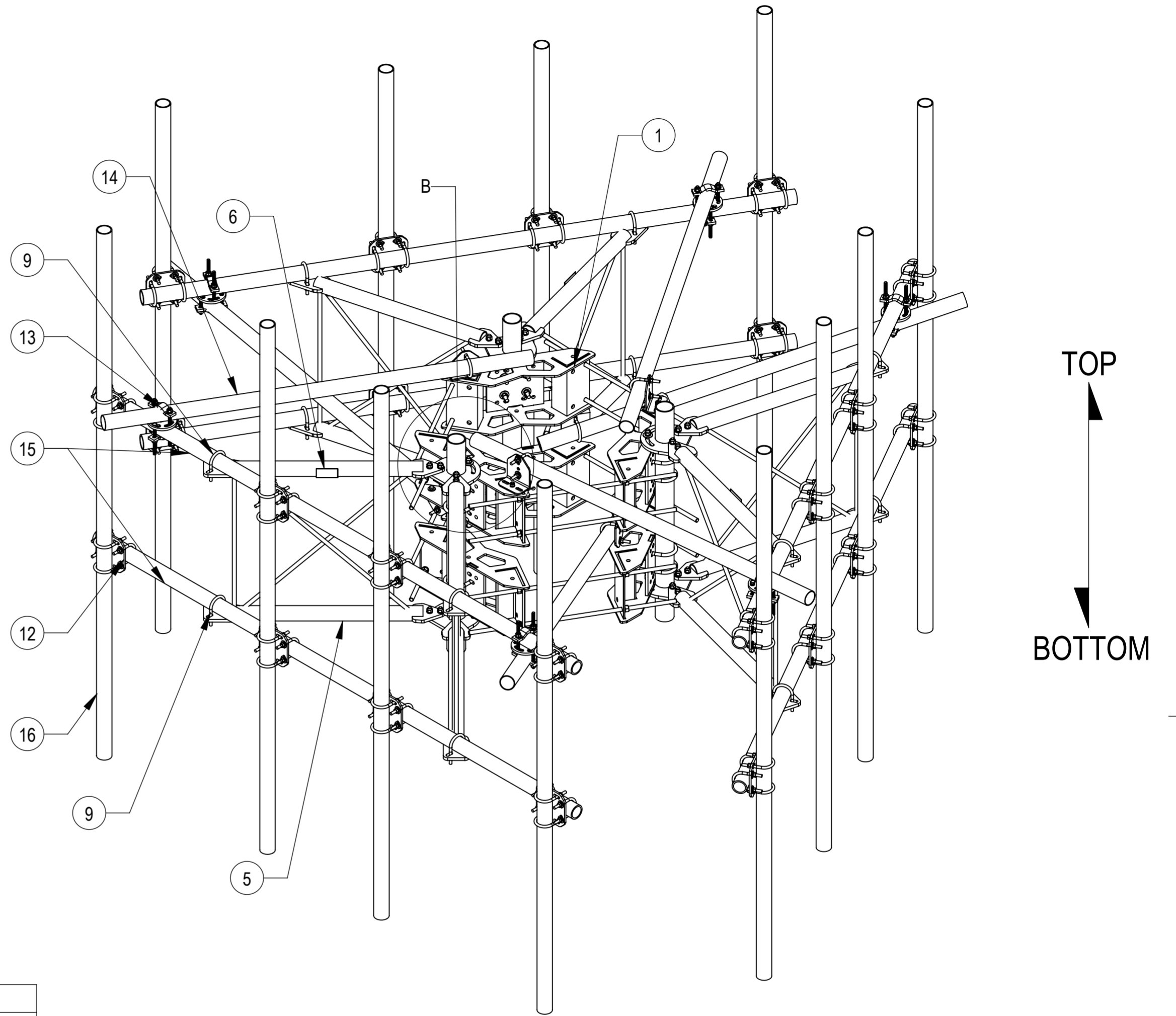
COMMSCOPE, INC. OF NORTH CAROLINA

TOLERANCES		SAP MATERIAL MASTER	
0 PLACE X[.] ± 5[0.2]	2 PLACE .XX[.XXX] ± 1.50[0.060]	SEE TABLE	
1 PLACE .X[.XX] ± 3.0[0.12]	ANGLES ± 2°		
FINISH GALV A123		MATERIAL SEE SEPARATE BILLS OF MATERIAL	
UNLESS OTHERWISE SPECIFIED DIMENSIONS ARE IN MILLIMETERS INTERPRET PER ISO STANDARDS HANDBOOK TECHNICAL DRAWINGS VOLUMES 1 & 2, THIRD EDITION (2002)		NAME DATE TITLE	
CE	JL1183 06/01/2022	MCG23HDX SECTOR FRAME SERIES	
RW	JL1183 06/30/2022		
AD	BCROSS 06/30/2022		
RE	JL1183 06/30/2022		
ECN 40149022CMO		SCALE 2:1	DOCUMENT NO. MCG23HDX
DENSITY	g/mm ³	SIZE A2	Auth Group INSL
MASS	grams	VERSION 02	MODEL
VOLUME	mm ³	STATUS RE	REVISION C
SURFACE AREA	mm ²	VERSION 02	STATUS RE
HEIGHT		REVISION C	VERSION 00
LENGTH		STATUS RE	REVISION A
WIDTH		REVISION A	STATUS RE
			SHEET 1 OF 8



DETAIL B
SCALE 1 : 5

MCG23HDX-10M12120 SHOWN FOR REFERENCE
(NOT ALL CONFIGURATIONS INCLUDE ALL ITEMS SEE NOTES IN TABLE)

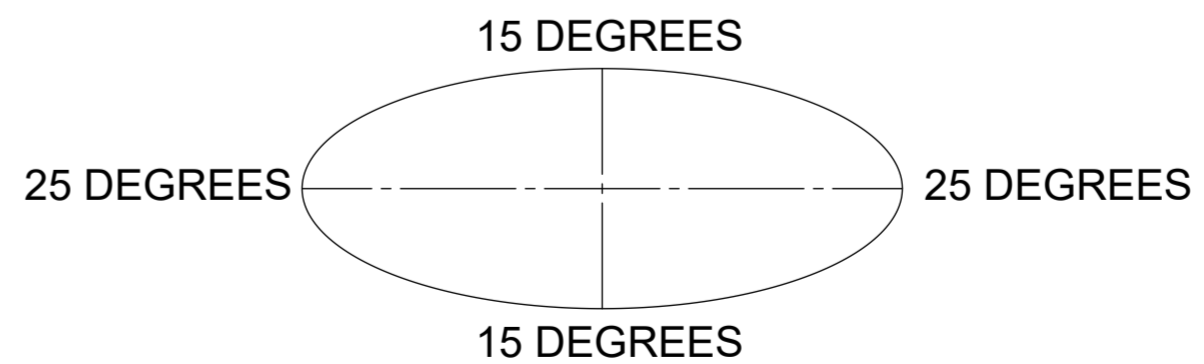


COMPONENT PART NUMBERS PROVIDED FOR ASSEMBLY PURPOSES;
INDIVIDUAL COMPONENTS MAY BE SHIPPED AS PARTS WITHIN AN INCLUDED KIT.

ITEM NO.	PART NUMBER	DESCRIPTION	QTY.	NOTE NO.
1	MC-RM1550-3	15" - 50" OD RINGMOUNT	2	
2	GB-05225	5/8" X 2-1/4" GALV BOLT KIT	30	
3	GW-05	5/8" GALV FLAT WASHER, 1.7OD	6	
4	GUB-53560	5/8" X 3-5/8" X 6" GALV U-BOLT	12	
5	SFG23175	ARM, STANDOFF - SFG23	6	
6	SFG2350	LABEL, SFG23	3	
7	SFG2206	ARM MOUNT WELDMENT	3	
8	XAU01	ANGLE, CROSSOVER, 1.9-3.5" X 1.9-3.5" OD	6	
9	GUB-4352	1/2" X 3" X 5-1/4" GALV U-BOLT	18	
10	GB-04145	1/2" X 1-1/2" GALV BOLT KIT	6	
11	GW-04	1/2" GALV FLAT WASHER	6	
12	XP-2525	CROSSOVER PLATE KIT, 2-7/8 OD X 2-7/8 OD	24	QTY SEE SEPARATE BILLS OF MATERIAL
13	XP-R	CROSSOVER PLATE, ROUND, UP TO 3.5" OD	6	
14	MT546084120	2.88" OD X .120" WALL X 84" LONG PIPE	6	
15	MT546126276	2-7/8" O.D. X 126" PIPE SCH 80	6	PART NO. SEE SEPARATE BILLS OF MATERIAL
16	MT546120	2.875" O.D. X 120" PIPE	12	PART NO. AND QTY SEE SEPARATE BILLS OF MATERIAL

ALLOWABLE TIEBACK ANGLE

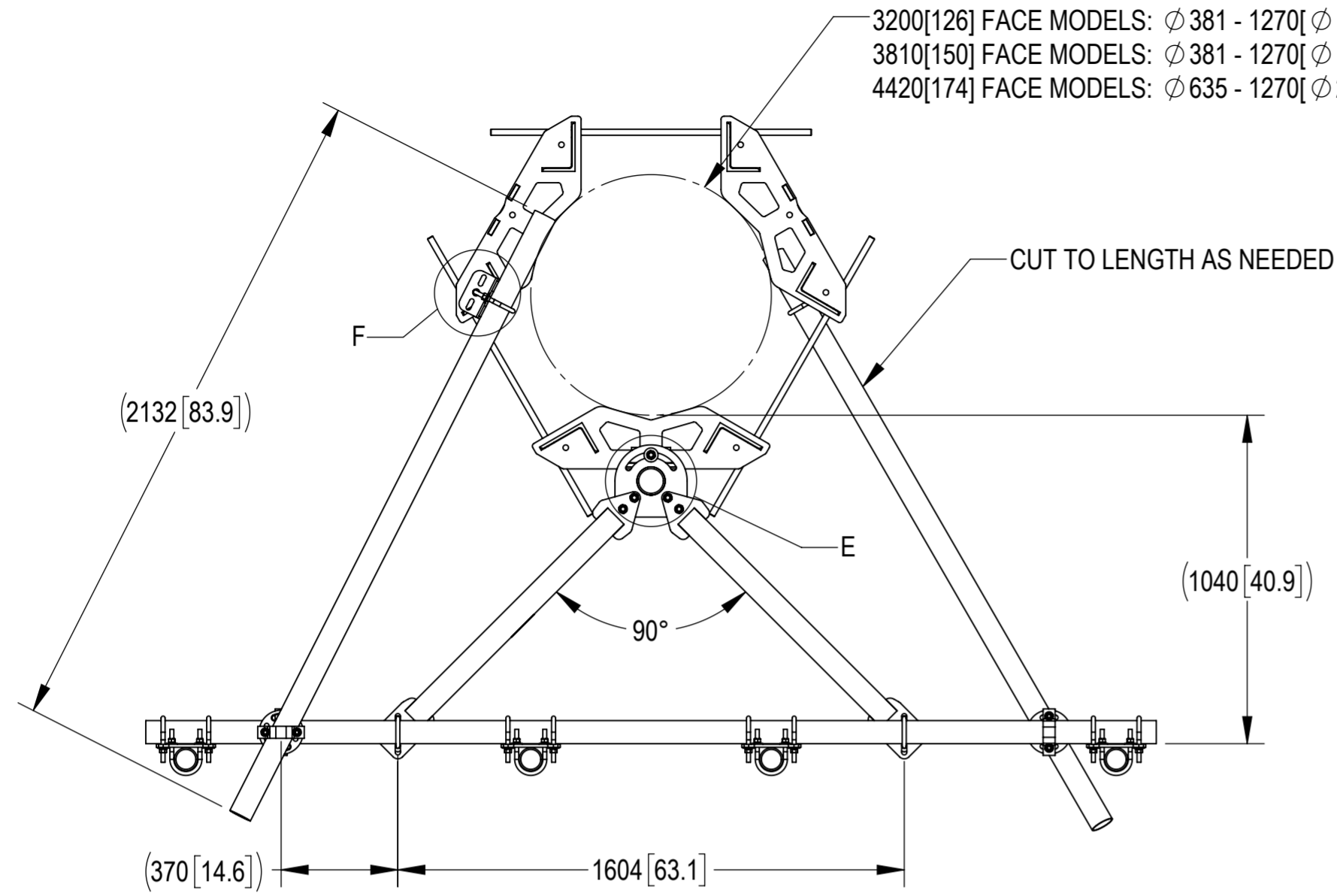
± 15 DEGREES VERTICAL
± 25 DEGREES HORIZONTAL



PATENT PENDING

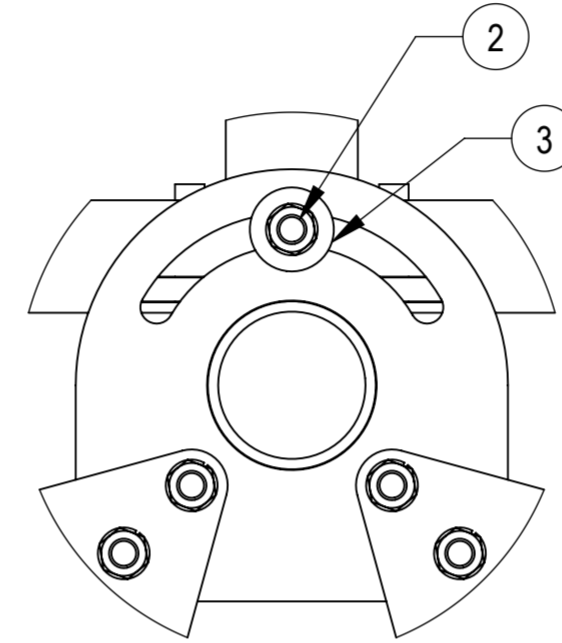
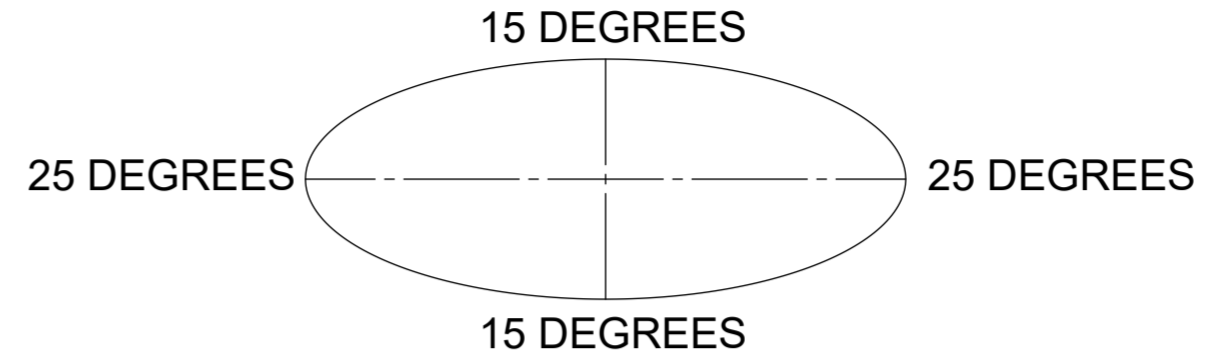
COMMSCOPE, INC. OF NORTH CAROLINA			
TITLE MCG23HDX SECTOR FRAME SERIES			
SIZE A2	SCALE 1:32	DOCUMENT NO. MCG23HDX	
DRAWING			SHEET
VERSION 00	STATUS RE	REVISION A	2 OF 8

3200[126] FACE MODELS: ϕ 381 - 1270[ϕ 15 - 50] POLE
 3810[150] FACE MODELS: ϕ 381 - 1270[ϕ 15 - 50] POLE
 4420[174] FACE MODELS: ϕ 635 - 1270[ϕ 25 - 50] POLE

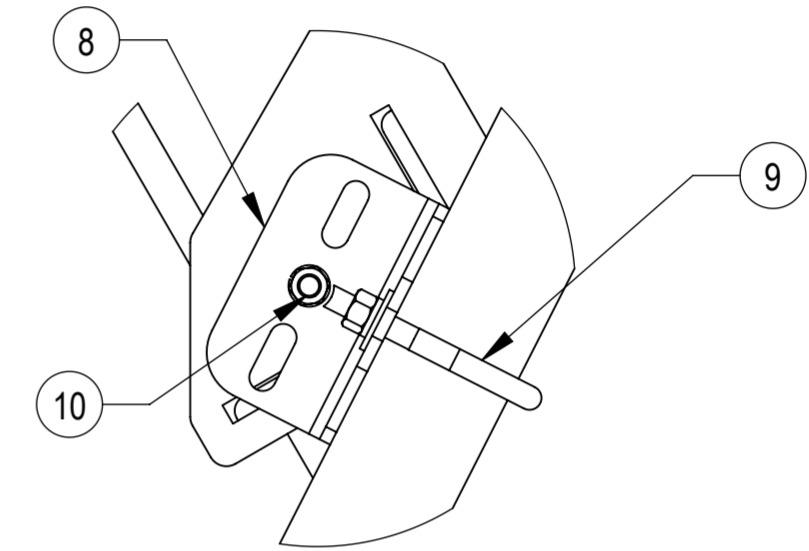


ALLOWABLE TIEBACK ANGLE

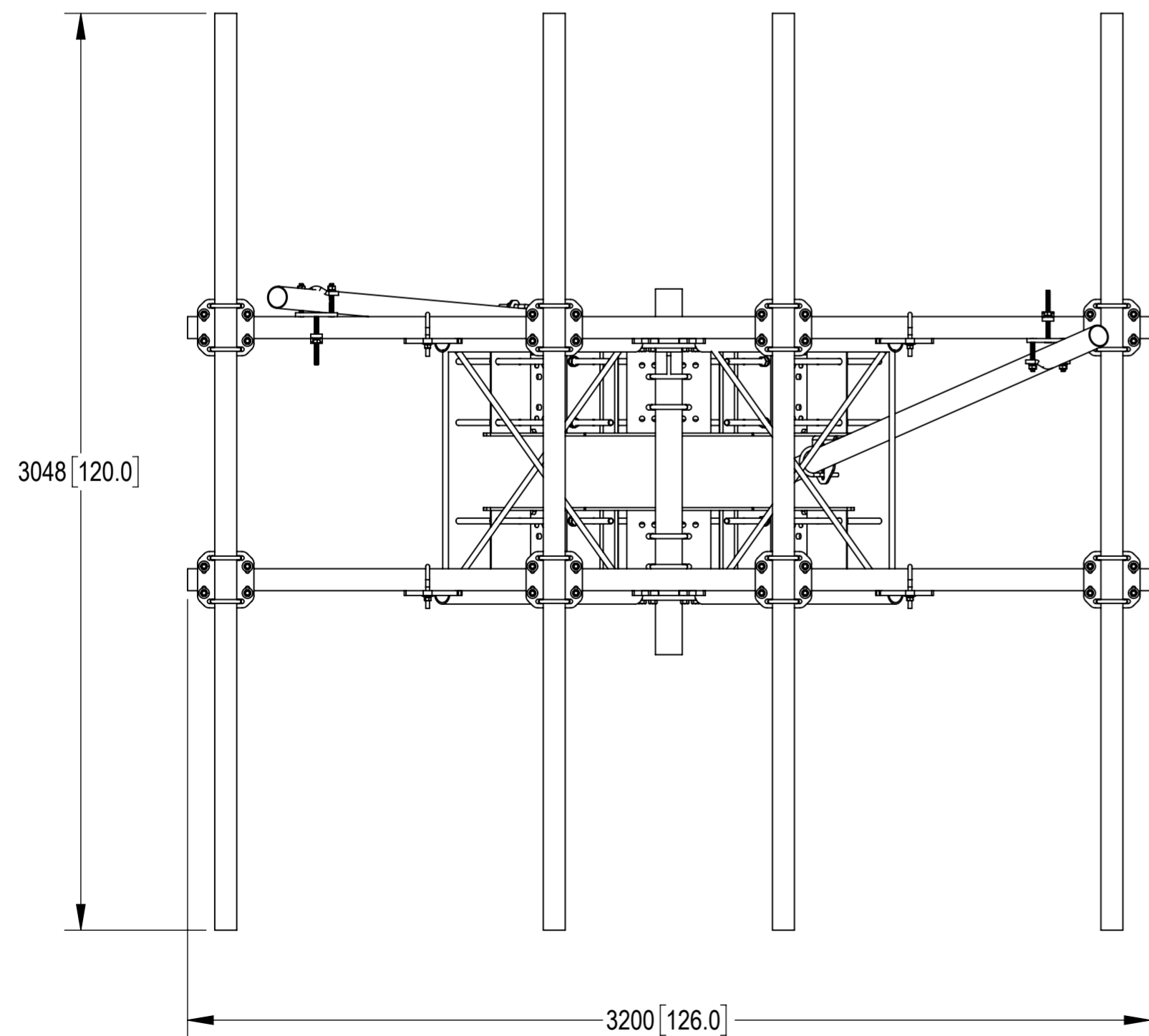
+15 DEGREES VERTICAL
 \pm 25 DEGREES HORIZONTAL



DETAIL E
 SCALE 1 : 4

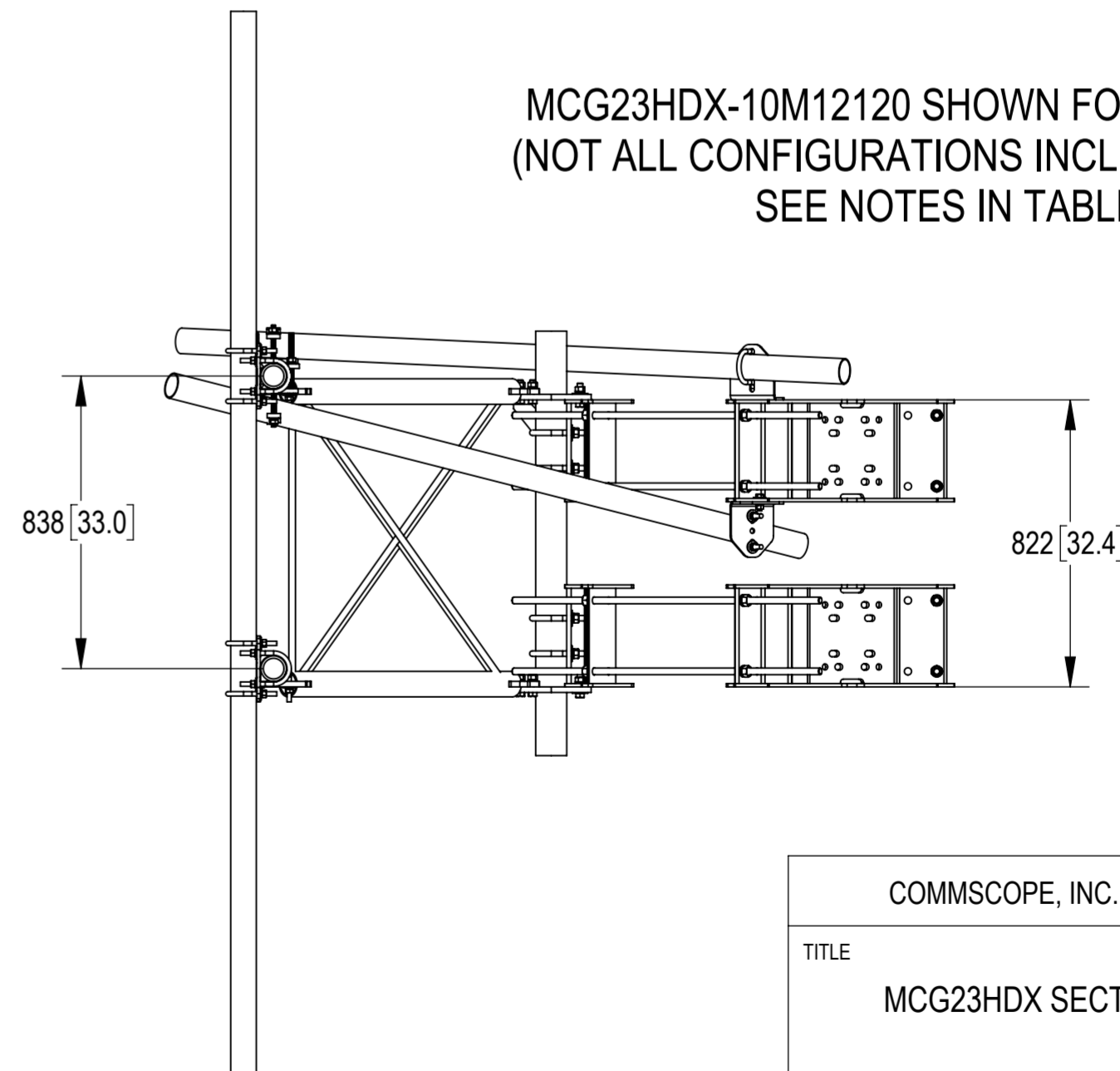


DETAIL F
 SCALE 1 : 4



TOP
 ↓
 BOTTOM

MCG23HDX-10M12120 SHOWN FOR REFERENCE
 (NOT ALL CONFIGURATIONS INCLUDE ALL ITEMS
 SEE NOTES IN TABLE)

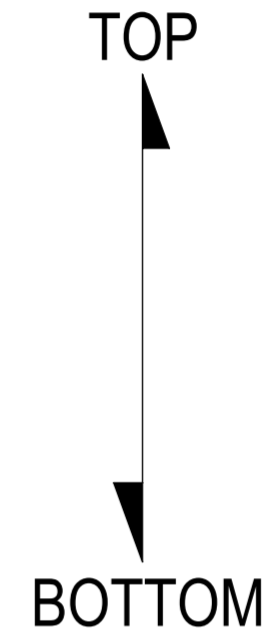
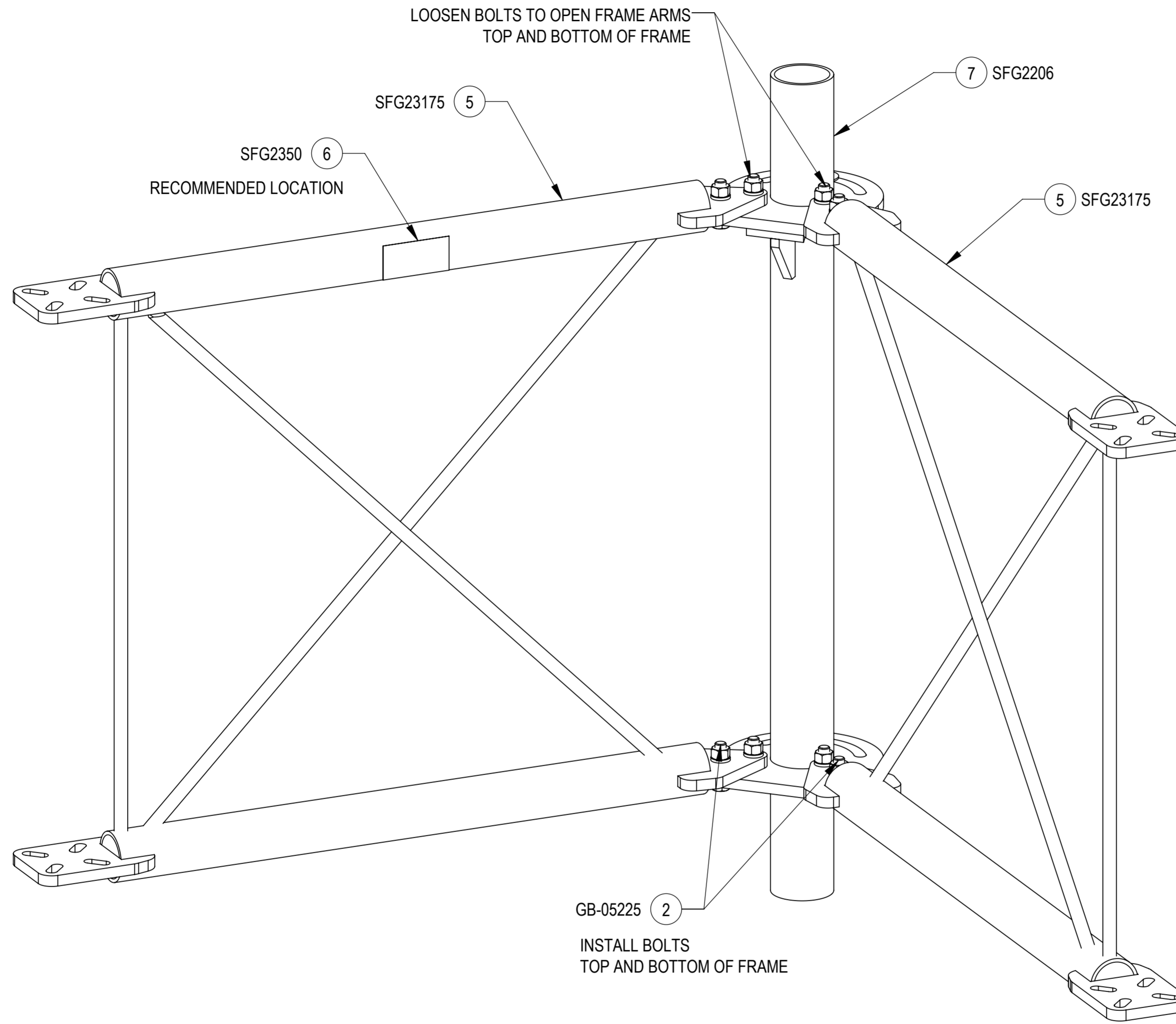


PATENT PENDING

COMMSCOPE, INC. OF NORTH CAROLINA				
TITLE MCG23HDX SECTOR FRAME SERIES				
SIZE A2	SCALE 1:32	DOCUMENT NO. MCG23HDX		
DRAWING				SHEET
VERSION 00	STATUS RE	REVISION A	3 OF 8	

INSTALLATION SEQUENCE - REFERENCE ONLY

STEP 1: LOOSEN BOLT KITS (GB-05225) TO OPEN FRAME SUPPORT ARMS. INSTALL ADDITIONAL 4X BOLT KITS (GB-05225).

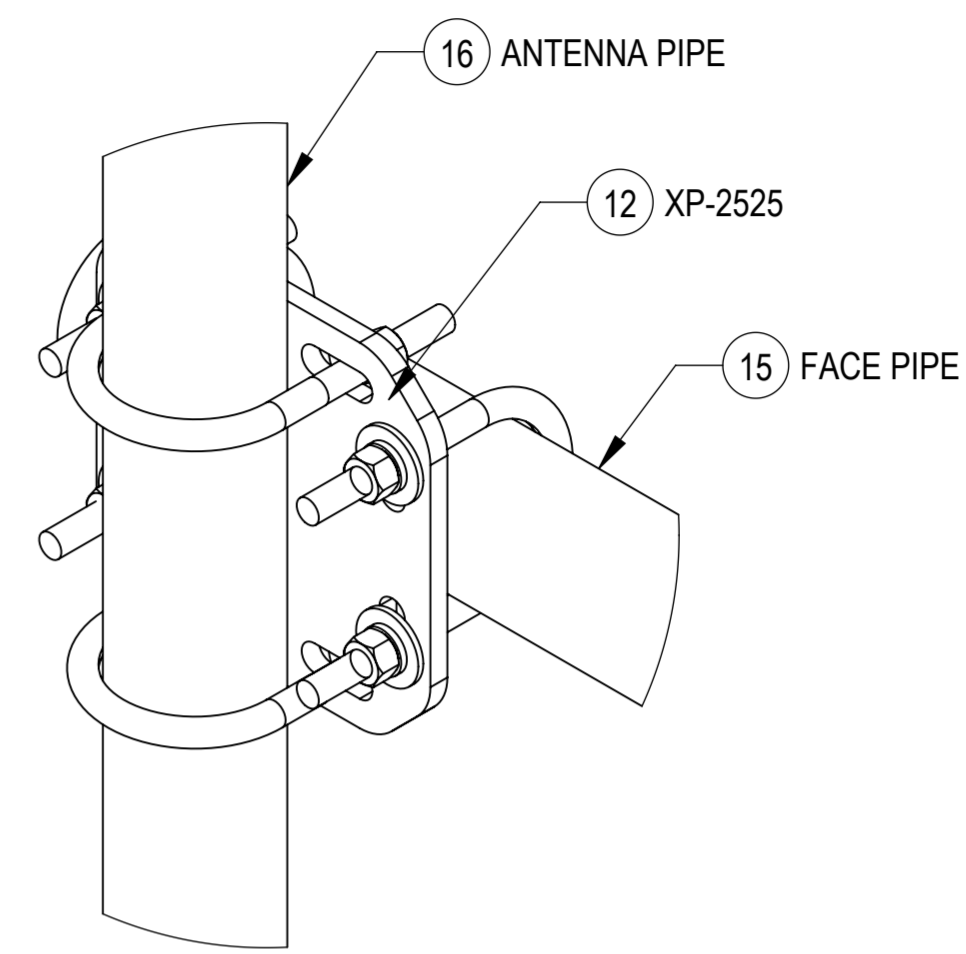
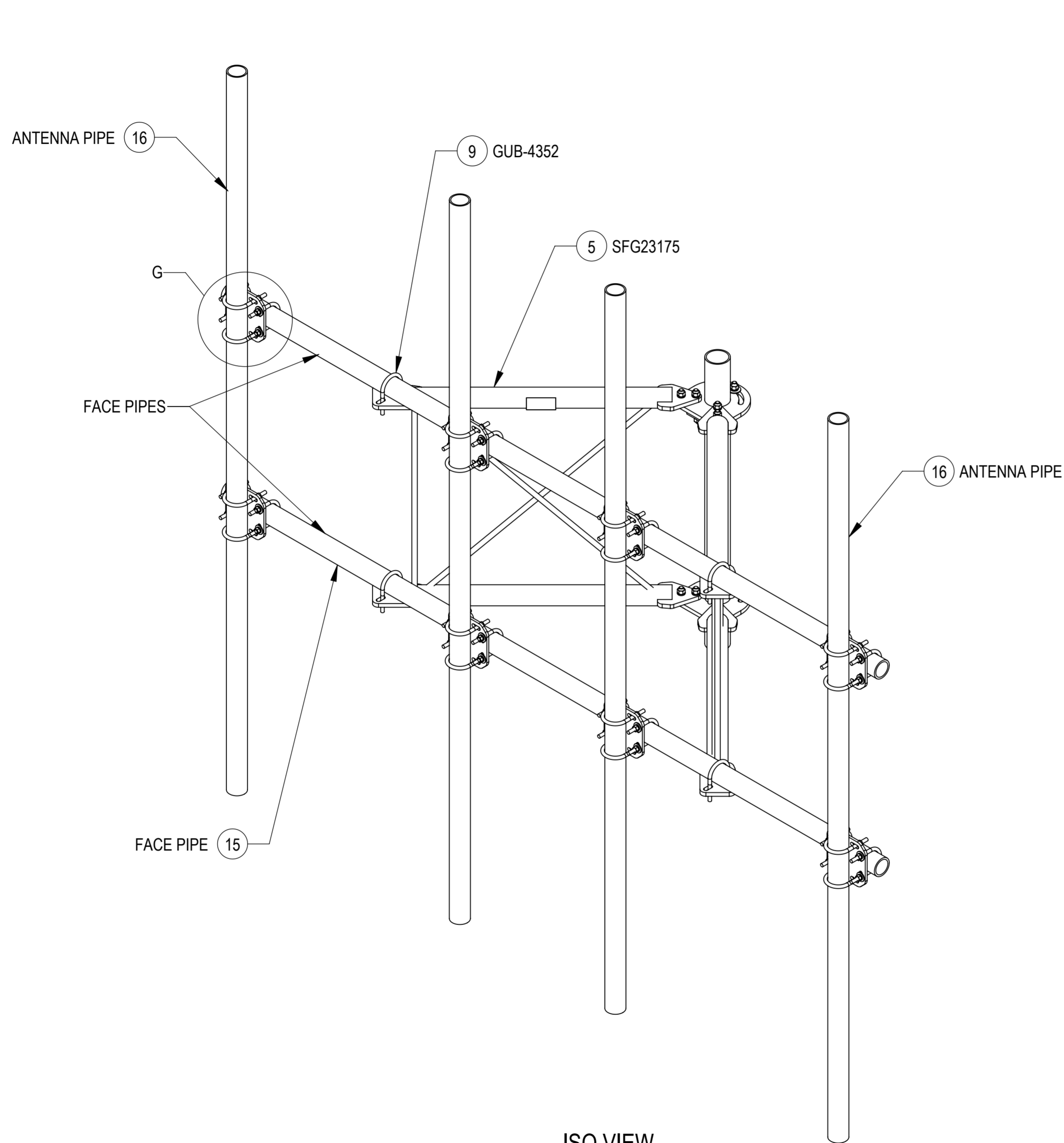


ISO VIEW

PATENT PENDING

COMMSCOPE, INC. OF NORTH CAROLINA				
TITLE MCG23HDX SECTOR FRAME SERIES				
SIZE A2	SCALE 1:32	DOCUMENT NO. MCG23HDX		
DRAWING				SHEET
VERSION 00	STATUS RE	REVISION A	4 OF 8	

STEP 2: ATTACH FACE PIPES TO STANDOFF ARMS (SFG23175) USING U-BOLTS (GUB-4352)
 AND THEN ATTACH ANTENNA PIPES TO FACE PIPES USING (XPU01) CROSSOVER PLATE KITS (XP-2525).



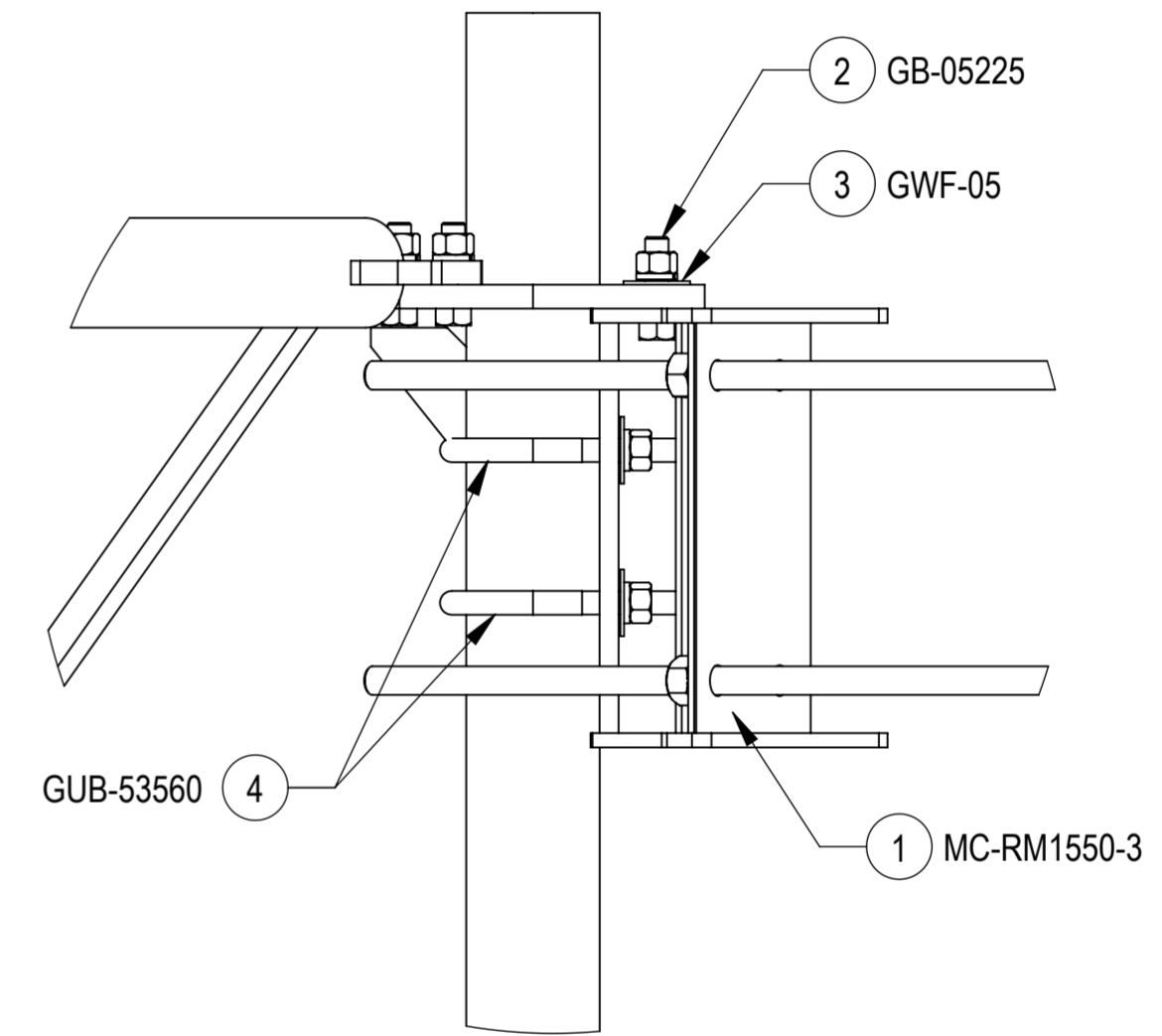
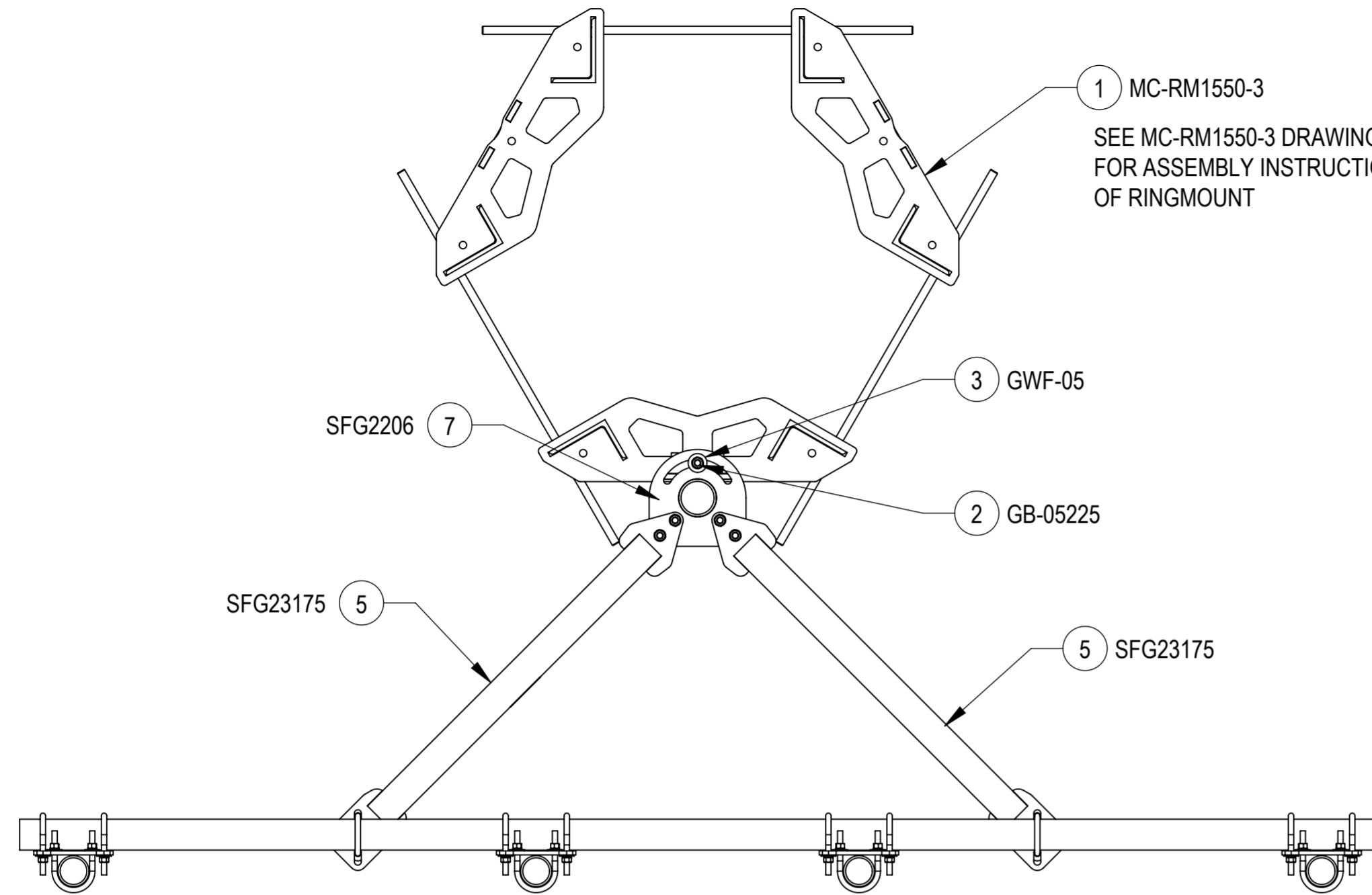
TOP
 ↓
 BOTTOM

ISO VIEW

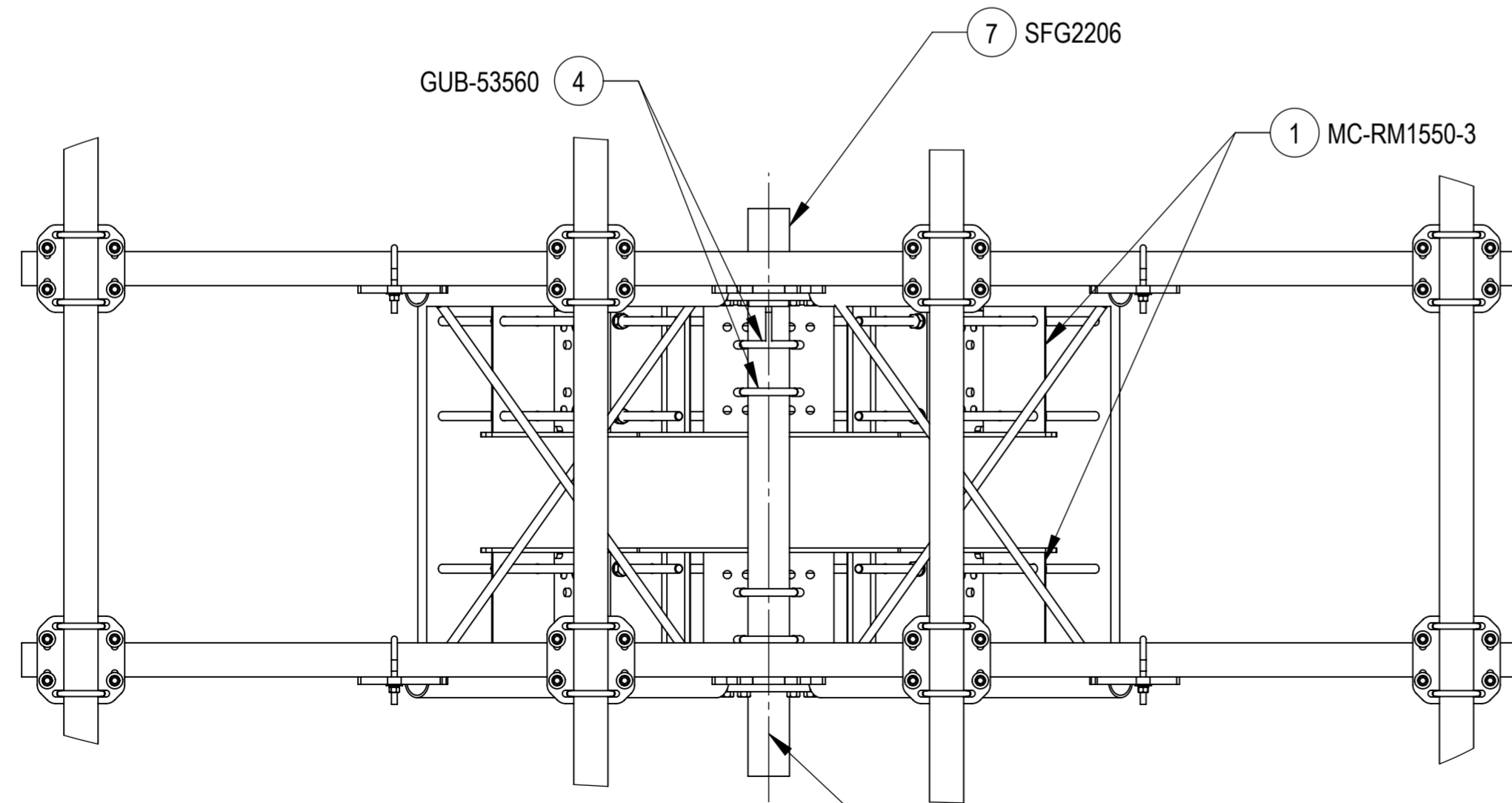
PATENT PENDING

COMMSCOPE, INC. OF NORTH CAROLINA			
TITLE MCG23HDX SECTOR FRAME SERIES			
SIZE A2	SCALE 1:32	DOCUMENT NO. MCG23HDX	
DRAWING			SHEET
VERSION 00	STATUS RE	REVISION A	5 OF 8

STEP 3: ATTACH BACK VERTICAL ARM MOUNT (SFG2206) TO RINGMOUNT (MC-RM1550-3) USING BOLT KIT (GB-05225), FLAT WASHER (GWF-05) AND U-BOLT (GUB-53560).



SIDE CROP VIEW



TOP
↑
↓
BOTTOM

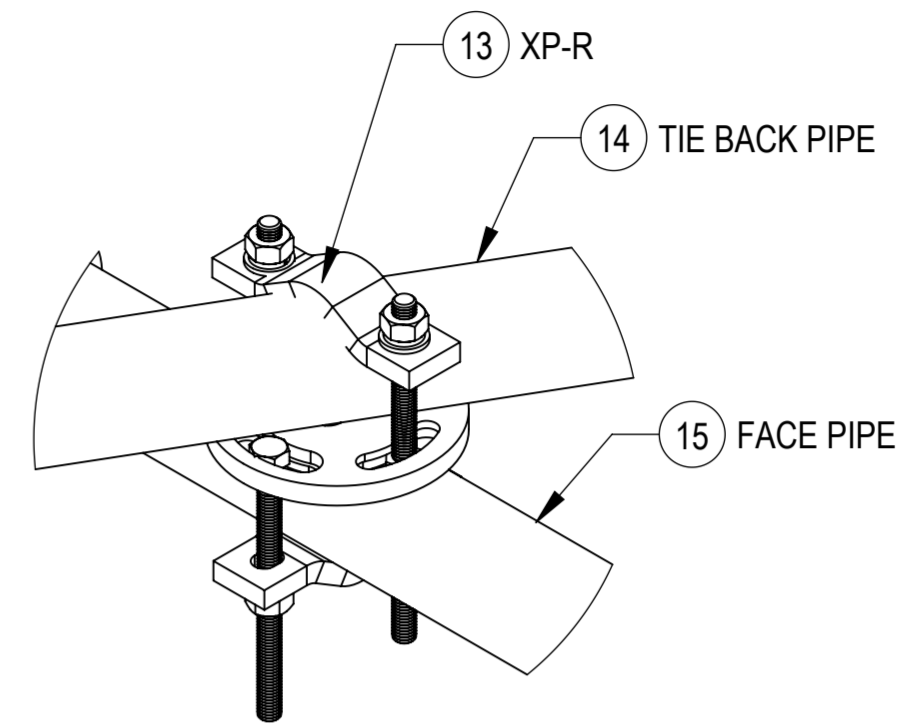
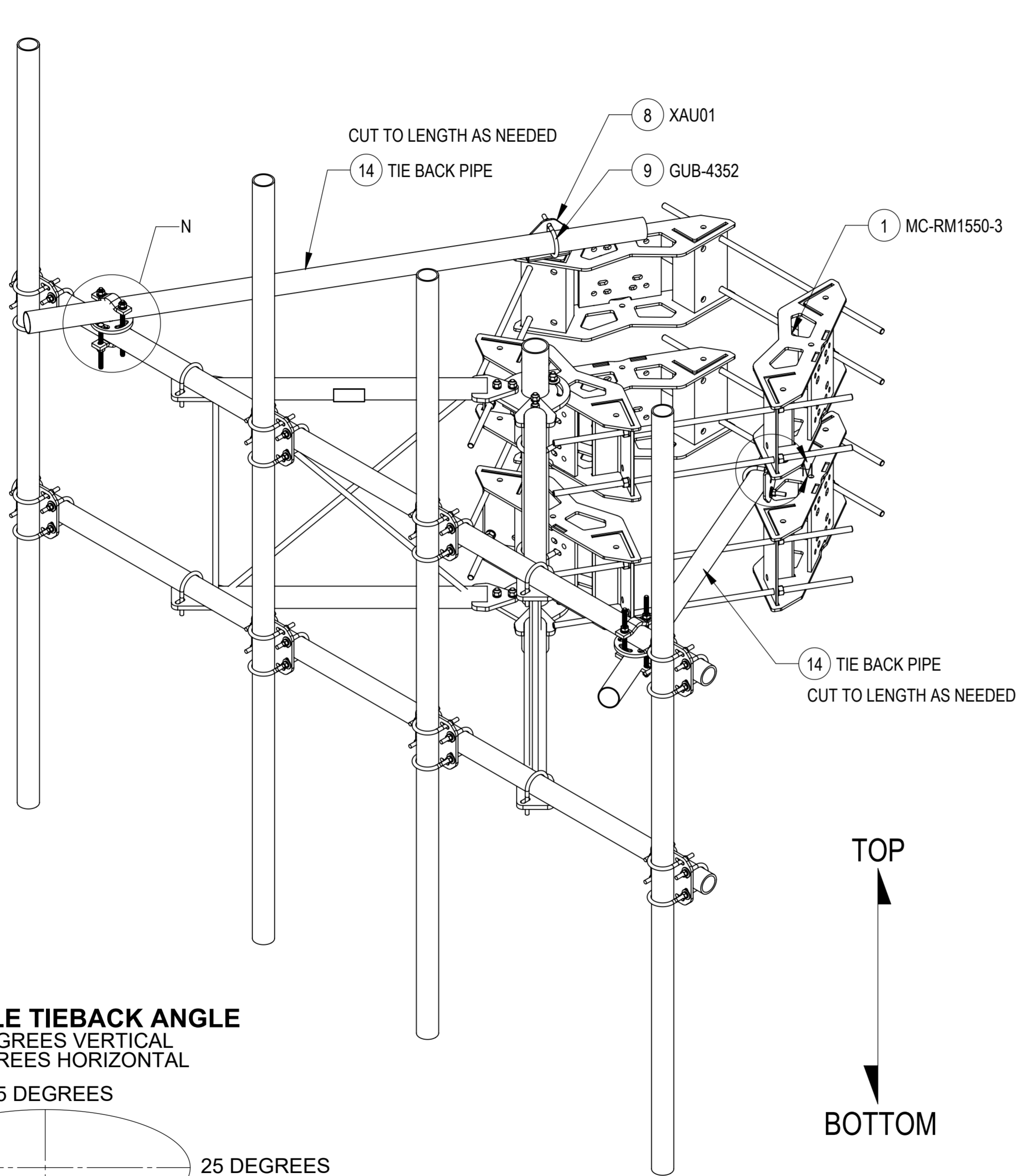
RINGMOUNT SECTOR CENTERLINES MUST VERTICALLY ALIGN TO ALLOW SECTOR FRAME SPINE PROPER MOUNTING

PATENT PENDING

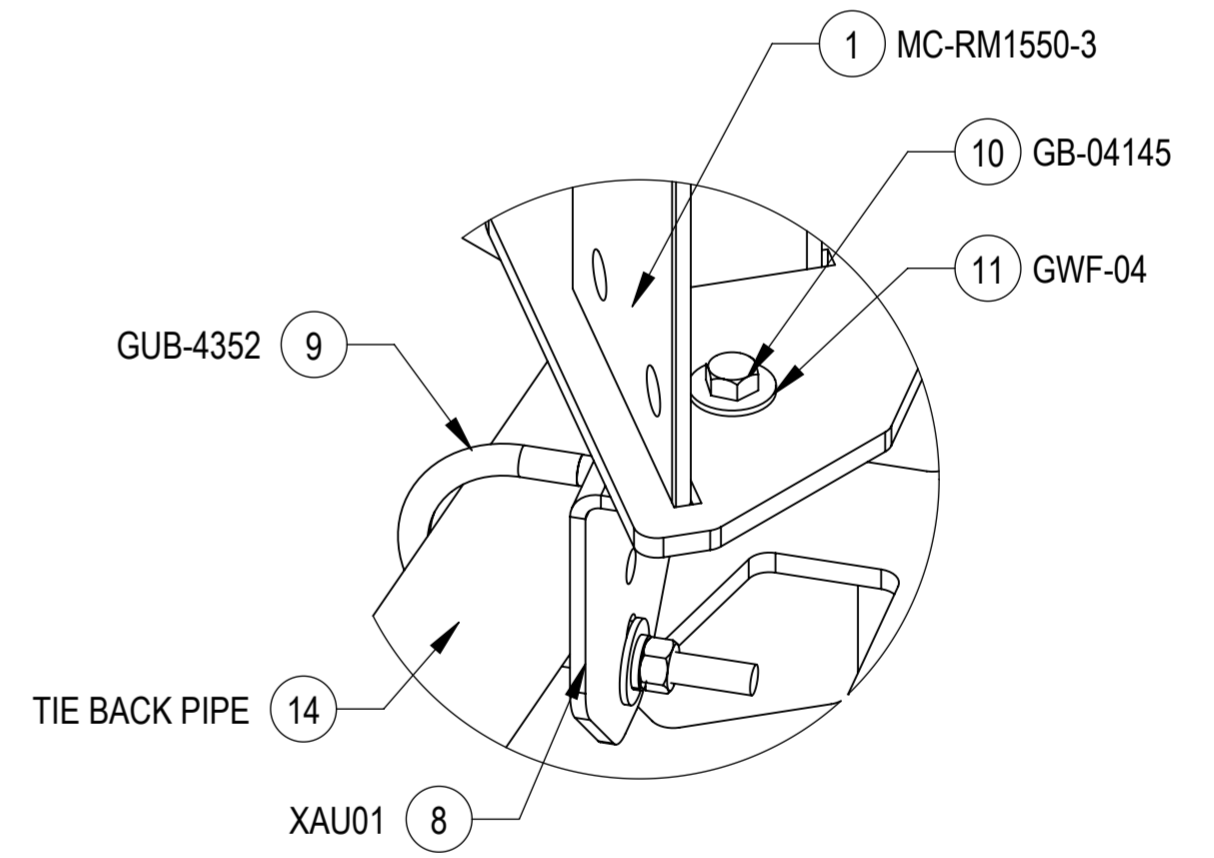
COMMSCOPE, INC. OF NORTH CAROLINA			
TITLE MCG23HDX SECTOR FRAME SERIES			
SIZE A2	SCALE 1:32	DOCUMENT NO. MCG23HDX	
DRAWING			SHEET
VERSION 00	STATUS RE	REVISION A	6 OF 8

STEP 4: ATTACH TIE BACK PIPES TO FACE PIPES USING ROUND CROSSOVER PLATE KITS (XP-R).

STEP 5: ATTACH TIE BACK PIPES TO RINGMOUNT (MC-RM1550-3) USING CROSSOVER ANGLES (XAU01), BOLT KITS (GB-04145), FLAT WASHERS (GWF-04) AND U-BOLTS (GUB-4352).



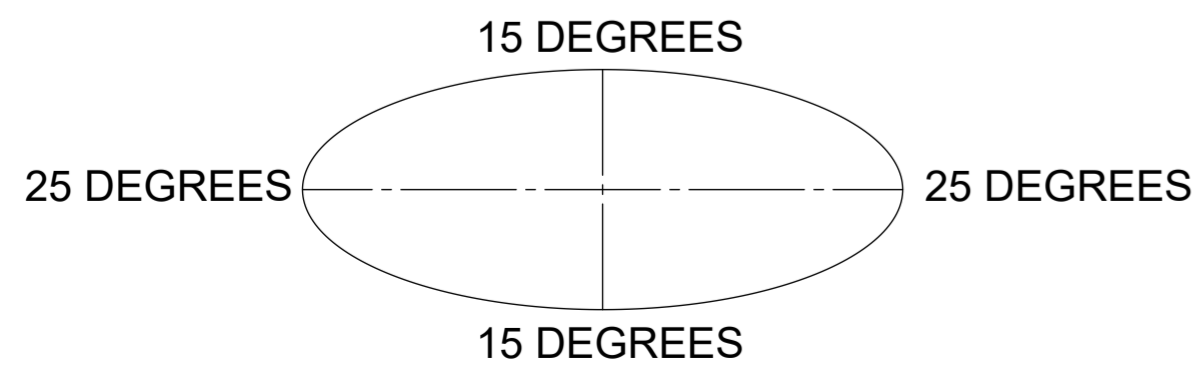
DETAIL N
SCALE 1 : 4



DETAIL M
SCALE 1 : 3

ALLOWABLE TIEBACK ANGLE

± 15 DEGREES VERTICAL
± 25 DEGREES HORIZONTAL

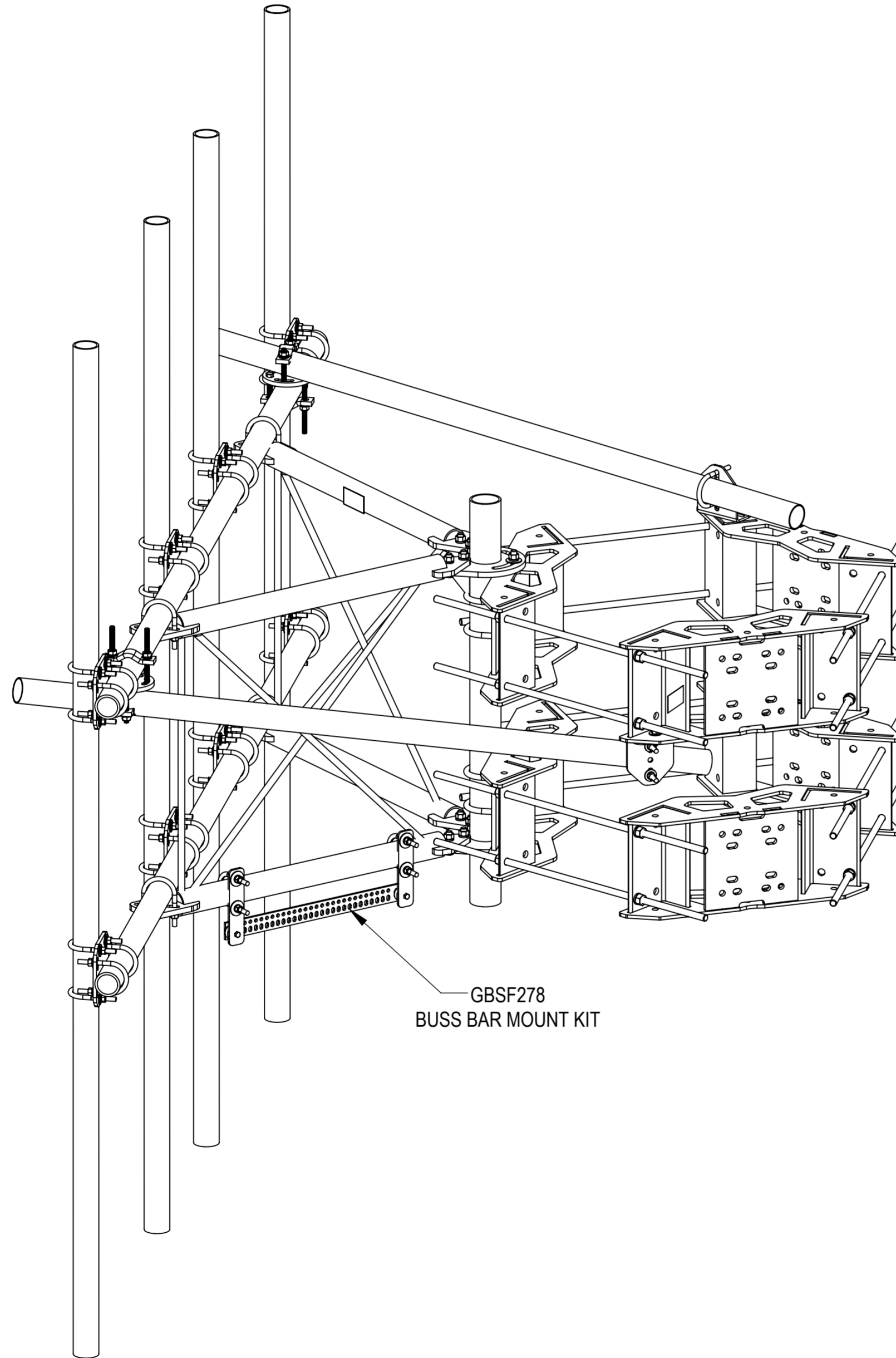


ISO VIEW

PATENT PENDING

COMMSCOPE, INC. OF NORTH CAROLINA			
TITLE MCG23HDX SECTOR FRAME SERIES			
SIZE A2	SCALE 1:32	DOCUMENT NO. MCG23HDX	
DRAWING			SHEET
VERSION 00	STATUS RE	REVISION A	7 OF 8

OPTIONAL ACCESSORIES:



GBSF278
BUSS BAR MOUNT KIT

COMMSCOPE, INC. OF NORTH CAROLINA				
TITLE MCG23HDX SECTOR FRAME SERIES				
SIZE A2	SCALE 1:32	DOCUMENT NO. MCG23HDX		
DRAWING				SHEET
VERSION	STATUS	REVISION	8 OF 8	
00	RE	A		