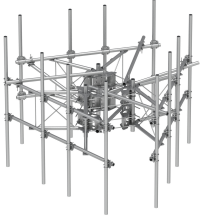


MCG23HD-14M-9-126



G23HD High Capacity 3-Sector Monopole Frame, 14.5 ft 2.88 in OD face pipes, includes nine 126 in pipes; For patents, see www.cs-pat.com.

OBSOLETE

This product was discontinued on: July 29, 2022

Replaced By:

MCG23HDX-14M1296 G23HDX High Capacity 3-Sector Monopole Sector Frame, 14.5 ft x 2.88 in OD face pipes, includes twelve 2.88 OD x 96 in pipes

Product Classification

Product Type High capacity monopole sector frame

General Specifications

Mounting Monopole, 381–1270 mm (15–50 in) OD

Pipe, quantity 9

Sectors, quantity 3

Dimensions

Height 3,200.4 mm | 126 in

Face Width 4.42 m | 14.5 ft

Width 4,419.6 mm | 174 in

Pipe Length 3,200.4 mm | 126 in

Face Support Pipe Diameter 73.025 mm | 2.875 in

Mounting Diameter, maximum 1270 mm | 50 in

Mounting Diameter, minimum 381 mm | 15 in

Pipe Outer Diameter 60.325 mm | 2.375 in

Stand-off Distance 1,092.2 mm | 43 in

Material Specifications

Material Type Hot dip galvanized steel

MCG23HD-14M-9-126

Mechanical Specifications

Wind Rating	For Specifications, please contact steelproducts@commscope.com or call 800-255-1479
Wind Rating Test Method	TIA/EIA-222

Packaging and Weights

Included	Pipe mounts Plain end pipes (9) Ring mounts (2) Sector frames (3) Stiff arm
Packaging quantity	1
Weight, net	1,104.951 kg 2436 lb

Regulatory Compliance/Certifications

Agency	Classification
ISO 9001:2015	Designed, manufactured and/or distributed under this quality management system



* Footnotes

Wind Rating	BWS—Base Wind Speed; FBC—Florida Building Code
--------------------	--