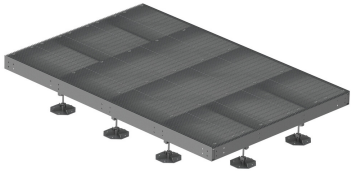


EQ-P1015-DF-CF



Concealed Foot Equipment Platform, 10 ft x 15 ft, base with thirteen displacement legs

Product Classification

Product Type Equipment platform system

General Specifications

Legs, quantity 13

Dimensions

Height 627.126 mm | 24.69 in

Width 3048 mm | 120 in

Length 4,572 mm | 180 in

Material Specifications

Material Type Hot dip galvanized steel

Mechanical Specifications

Load Capacity Up to 10,000 lb (4536 kg) loading

Packaging and Weights

Included Frame | Grating | Hardware | Legs

Packaging quantity 1

Weight, net 1,271.7 kg | 2,803.615 lb

Regulatory Compliance/Certifications

Agency	Classification
CHINA-ROHS	Above maximum concentration value
ROHS	Compliant/Exempted
UK-ROHS	Compliant/Exempted



