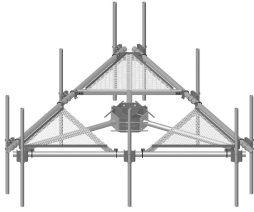


# MC-PK14S-B



Low-Profile Co-location Platform Kit, 14 ft face, 10 in to 30 in OD, pipe ordered separately

## OBSOLETE

This product was discontinued on: August 18, 2022

### Replaced By:

MC-PK14M-B

Low-Profile Co-location Platform Kit, 14 ft face, 12 in to 50 in OD, pipe ordered separately

## Product Classification

**Product Type** Monopole platform kit

## General Specifications

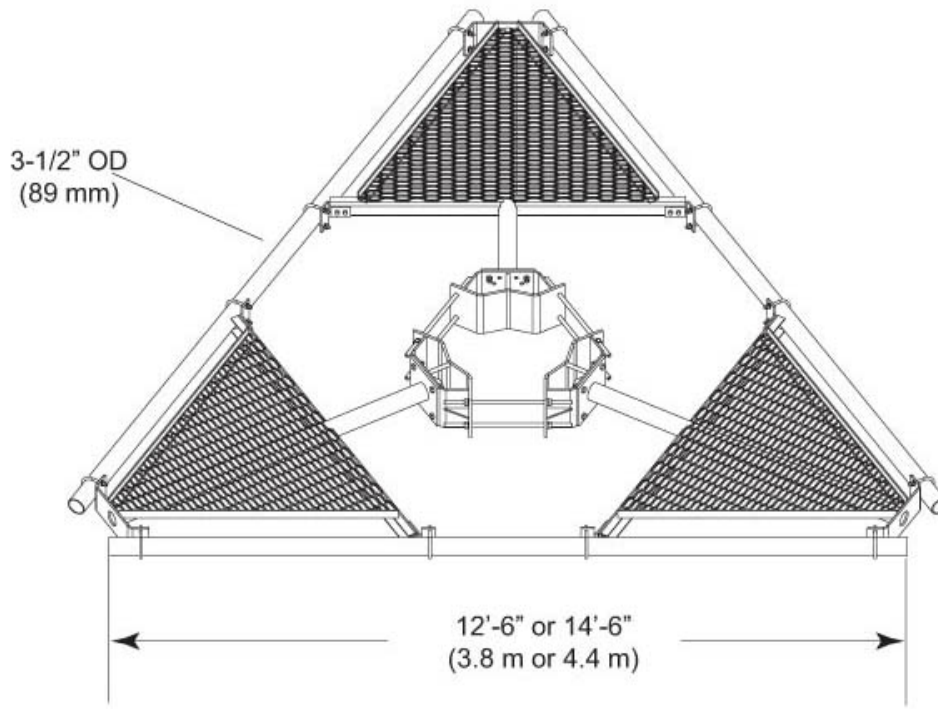
**Mounting** Monopole, 254–762 mm (10–30 in) OD  
**Pipe, quantity** 0  
**Sectors, quantity** 3

## Dimensions

**Height** 254 mm | 10 in  
**Face Width** 4.42 m | 14.5 ft  
**Width** 4,419.6 mm | 174 in  
**Length** 914.4 mm | 36 in  
**Face Support Pipe Diameter** 88.9 mm | 3.5 in  
**Mounting Diameter, maximum** 762 mm | 30 in  
**Mounting Diameter, minimum** 254 mm | 10 in  
**Pipe Outer Diameter** 0 mm | 0 in  
**Mounting Circumference, maximum** 2,392.68 mm | 94.2 in  
**Mounting Circumference, minimum** 797.56 mm | 31.4 in

# MC-PK14S-B

## Outline Drawing



## Material Specifications

**Material Type** Hot dip galvanized steel

## Mechanical Specifications

**Wind Rating** 120 mph (BWS) at 150 ft AGL | 140 mph (3-second gust) at 150 ft AGL using Exposure D per FBC

**Wind Rating Criteria** Four 72 in x 8 in panel antennas per sector

**Wind Rating Test Method** TIA/EIA-222

## Environmental Specifications

**EPA with 1/2 in (12 mm) radial ice** 1.217 m<sup>2</sup> | 13.1 ft<sup>2</sup>

**EPA without ice** 0.948 m<sup>2</sup> | 10.2 ft<sup>2</sup>

## Packaging and Weights

**Included** Pipe mounts | Platform | Ring mount

# MC-PK14S-B

---

**Packaging quantity** 1  
**Weight, net** 554.88 kg | 1,223.3 lb

## Regulatory Compliance/Certifications

Agency	Classification
ISO 9001:2015	Designed, manufactured and/or distributed under this quality management system



## Included Products

- |             |  |
|-------------|--|
| MC-RM1030-3 | - Universal Ring Mount, 10 in to 30 in OD  |
| MT-196-14   | - Low Profile Co-location Base Platform, 14 ft face. Ring Mount & Antenna Pipes Sold Separately. |

## \* Footnotes

**Wind Rating** BWS—Base Wind Speed; FBC—Florida Building Code

**EPA with 1/2 in (12 mm) radial ice** EPA—Effective Projected Area

**EPA without ice** EPA—Effective Projected Area