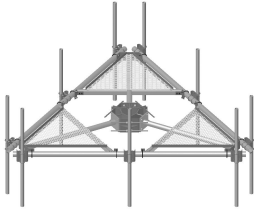


# MC-PK14S-12-72



Low-Profile Co-location Platform Kit, 14 ft face, 10 in to 30 in OD, includes pipe

## OBSOLETE

This product was discontinued on: August 18, 2022

### Replaced By:

MC-PK14M-12-96

Low-Profile Co-location Platform Kit, 14 ft face, 12 in to 50 in OD, includes pipe

## Product Classification

**Product Type** Monopole platform kit

## General Specifications

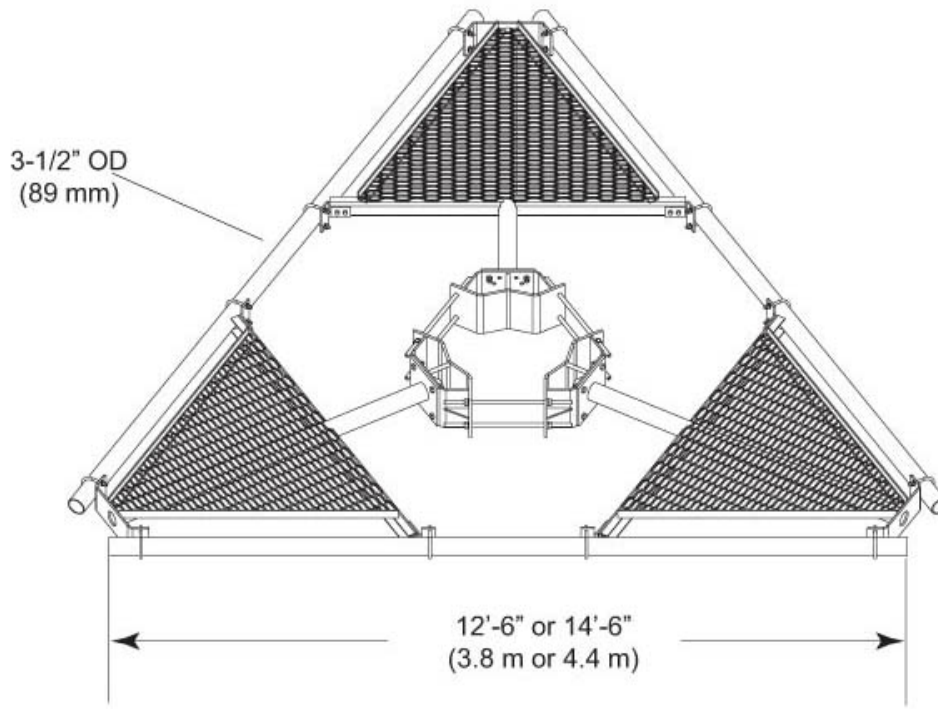
**Mounting** Monopole, 254–762 mm (10–30 in) OD  
**Pipe, quantity** 12  
**Sectors, quantity** 3

## Dimensions

**Height** 1,828.8 mm | 72 in  
**Face Width** 4.42 m | 14.5 ft  
**Width** 4,419.6 mm | 174 in  
**Length** 914.4 mm | 36 in  
**Pipe Length** 1,828.8 mm | 72 in  
**Face Support Pipe Diameter** 88.9 mm | 3.5 in  
**Mounting Diameter, maximum** 762 mm | 30 in  
**Mounting Diameter, minimum** 254 mm | 10 in  
**Pipe Outer Diameter** 60.325 mm | 2.375 in  
**Mounting Circumference, maximum** 2,392.68 mm | 94.2 in  
**Mounting Circumference, minimum** 797.56 mm | 31.4 in

# MC-PK14S-12-72

## Outline Drawing



## Material Specifications

**Material Type** Hot dip galvanized steel

## Mechanical Specifications

**Wind Rating** 120 mph (BWS) at 150 ft AGL | 140 mph (3-second gust) at 150 ft AGL using Exposure D per FBC

**Wind Rating Criteria** Four 72 in x 8 in panel antennas per sector

**Wind Rating Test Method** TIA/EIA-222

## Environmental Specifications

**EPA with 1/2 in (12 mm) radial ice** 1.217 m<sup>2</sup> | 13.1 ft<sup>2</sup>

**EPA without ice** 0.948 m<sup>2</sup> | 10.2 ft<sup>2</sup>

## Packaging and Weights

**Included** Pipe mounts | Platform | Ring mount

# MC-PK14S-12-72

---

<b>Packaging quantity</b>	1
<b>Weight, net</b>	733.686 kg   1,617.5 lb

## Regulatory Compliance/Certifications

<b>Agency</b>	<b>Classification</b>
ISO 9001:2015	Designed, manufactured and/or distributed under this quality management system



## Included Products

MC-PK14M-B	-	Low-Profile Co-location Platform Kit, 14 ft face, 12 in to 50 in OD, pipe ordered separately
MC-PK14S-B	-	Low-Profile Co-location Platform Kit, 14 ft face, 10 in to 30 in OD, pipe ordered separately
MT-219-H	-	Pipe Mount Kit - 2-3/8" TO 3-1/2" PIPE - pipe not included
MT-651	-	Plain End Pipe, 2-3/8 in OD x 72 in .120" A500C 46Ksi

## \* Footnotes

<b>Wind Rating</b>	BWS—Base Wind Speed; FBC—Florida Building Code
<b>EPA with 1/2 in (12 mm) radial ice</b>	EPA—Effective Projected Area
<b>EPA without ice</b>	EPA—Effective Projected Area