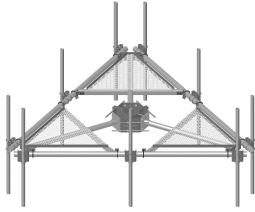


MC-PK12S-12-72



Low-Profile Co-location Platform Kit, 12 ft face, 10 in to 30 in OD, includes pipe

OBSOLETE

This product was discontinued on: August 18, 2022

Replaced By:

MC-PK12M-12-96

Low-Profile Co-location Platform Kit, 12 ft face, 12 in to 50 in OD, includes twelve 96 in pipes

Product Classification

Product Type Monopole platform kit

General Specifications

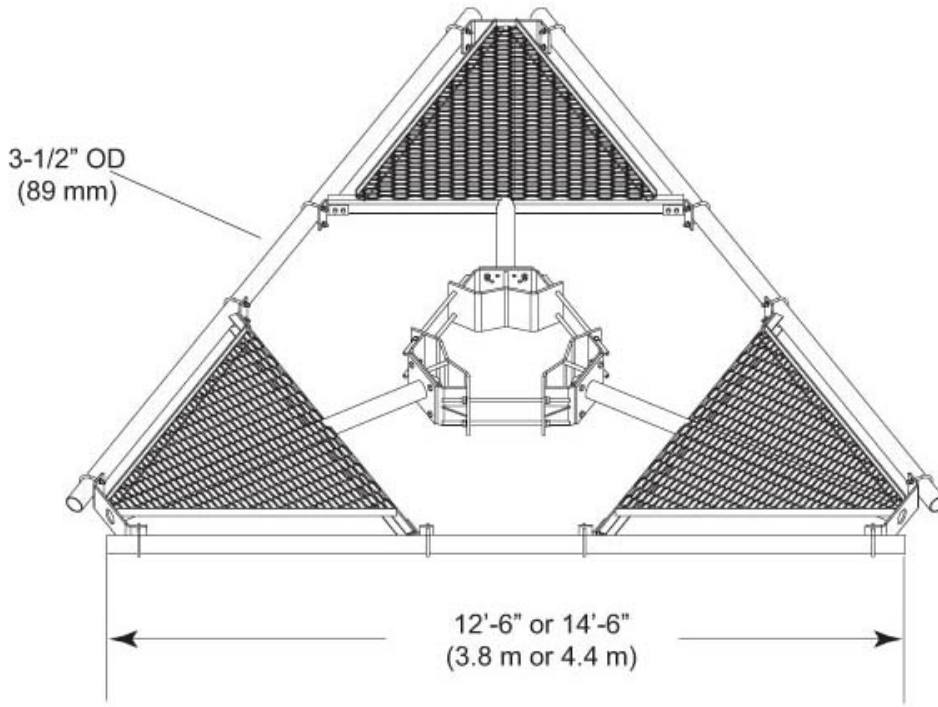
Mounting Monopole, 254–762 mm (10–30 in) OD
Pipe, quantity 12
Sectors, quantity 3

Dimensions

Height 1,828.8 mm | 72 in
Face Width 3.81 m | 12.5 ft
Width 3810 mm | 150 in
Length 914.4 mm | 36 in
Pipe Length 1,828.8 mm | 72 in
Face Support Pipe Diameter 88.9 mm | 3.5 in
Mounting Diameter, maximum 762 mm | 30 in
Mounting Diameter, minimum 254 mm | 10 in
Pipe Outer Diameter 60.325 mm | 2.375 in
Mounting Circumference, maximum 2,392.68 mm | 94.2 in
Mounting Circumference, minimum 797.56 mm | 31.4 in

MC-PK12S-12-72

Outline Drawing



Material Specifications

Material Type Hot dip galvanized steel

Mechanical Specifications

Wind Rating 120 mph (BWS) at 150 ft AGL | 140 mph (3-second gust) at 150 ft AGL using Exposure D per FBC

Wind Rating Criteria Four 72 in x 8 in panel antennas per sector

Wind Rating Test Method TIA/EIA-222

Environmental Specifications

EPA with 1/2 in (12 mm) radial ice 1.05 m² | 11.3 ft²

EPA without ice 0.818 m² | 8.8 ft²

Packaging and Weights

Included Pipe mounts | Platform | Ring mount

MC-PK12S-12-72

Packaging quantity 1
Weight, net 1,517.2 lb | 688.19 kg

Regulatory Compliance/Certifications

Agency	Classification
ISO 9001:2015	Designed, manufactured and/or distributed under this quality management system



Included Products

- MT-219-H – Pipe Mount Kit - 2-3/8" TO 3-1/2" PIPE - pipe not included
- MT-651 – Plain End Pipe, 2-3/8 in OD x 72 in .120" A500C 46Ksi

* Footnotes

Wind Rating BWS—Base Wind Speed; FBC—Florida Building Code

EPA with 1/2 in (12 mm) radial ice EPA—Effective Projected Area

EPA without ice EPA—Effective Projected Area