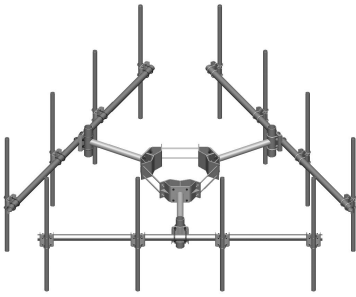


# MC-K14L-12-72



Monopole Co-location T-Frame Kit, 30 in to 60 in OD, 14 ft face, includes pipe

## OBSOLETE

This product was discontinued on: August 18, 2022

### Replaced By:

MC-K14M-12-72

Monopole Co-location T-Frame kit, 12 in to 50 in OD, 14 ft 6 in face, includes pipe

## Product Classification

**Product Type** Monopole T-frame kit

## General Specifications

**Mounting** Monopole, 762–1524 mm (30–60 in) OD

**Pipe, quantity** 12

**Sectors, quantity** 3

## Dimensions

**Height** 72 in | 1,828.8 mm

**Face Width** 14.5 ft | 4.42 m

**Width** 174 in | 4,419.6 mm

**Length** 36 in | 914.4 mm

**Pipe Length** 72 in | 1,828.8 mm

**Mounting Diameter, maximum** 60 in | 1524 mm

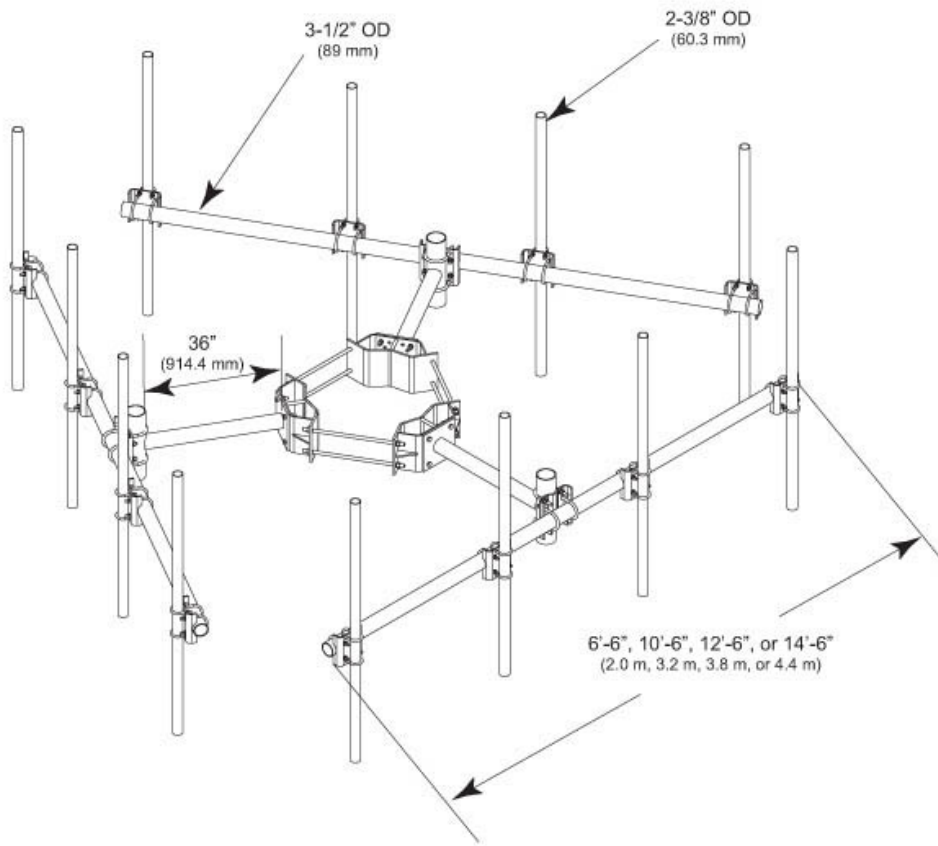
**Mounting Diameter, minimum** 30 in | 762 mm

**Pipe Outer Diameter** 2.4 in | 60.96 mm

**Stand-off Distance** 36 in | 914.4 mm

# MC-K14L-12-72

## Outline Drawing



## Material Specifications

**Material Type** Hot dip galvanized steel

## Mechanical Specifications

**Wind Rating** 120 mph (BWS) at 150 ft AGL | 140 mph (3-second gust) at 150 ft AGL using Exposure D per FBC

**Wind Rating Criteria** Four 72 in x 8 in panel antennas per sector

**Wind Rating Test Method** TIA/EIA-222

## Environmental Specifications

**EPA with 1/2 in (12 mm) radial ice** 16.3 ft<sup>2</sup> | 1.514 m<sup>2</sup>

**EPA without ice** 12.8 ft<sup>2</sup> | 1.189 m<sup>2</sup>

# MC-K14L-12-72

---

## Packaging and Weights

<b>Included</b>	Cellular pipe frames   Pipe mounts   Ring mount   Stand-off arms
<b>Packaging quantity</b>	1
<b>Weight, net</b>	1,345.7 lb   610.399 kg

## Regulatory Compliance/Certifications

<b>Agency</b>	<b>Classification</b>
ISO 9001:2015	Designed, manufactured and/or distributed under this quality management system



## Included Products

MC-K14L-B	-	Monopole Co-location T-Frame Kit, 30 in to 60 in OD, 14 ft face, pipe ordered separately
MT-219-H	-	Pipe Mount Kit - 2-3/8" TO 3-1/2" PIPE - pipe not included
MT-651	-	Plain End Pipe, 2-3/8 in OD x 72 in .120" A500C 46Ksi

## \* Footnotes

<b>Wind Rating</b>	BWS—Base Wind Speed; FBC—Florida Building Code
<b>EPA with 1/2 in (12 mm) radial ice</b>	EPA—Effective Projected Area
<b>EPA without ice</b>	EPA—Effective Projected Area