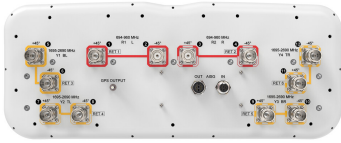


RRV4-65B-R6-PS



12-port sector antenna, 4x 698–960 and 8x 1695–2690 MHz, 65° HPBW, 6x IntRET. Bands cascaded SRET.

- All Internal RET actuators are connected in “Cascaded SRET” configuration
- New aerodynamic endcaps for wind load optimization
- Integrated Antenna Orientation and Location Sensing System APS-XT-GPS
- GPS timing synchronization output for RRH via SMA (f)

General Specifications

| | |
|--|---|
| Antenna Type | Sector |
| Band | Multiband |
| Color | Light Gray (RAL 7035) |
| Grounding Type | RF connector inner conductor and body grounded to reflector and mounting bracket |
| Performance Note | Outdoor usage Wind loading figures are validated by wind tunnel measurements described in EN1991-1-4 standard |
| Radome Material | Fiberglass, UV resistant |
| Reflector Material | Aluminum |
| RF Connector Interface | 4.3-10 Female |
| RF Connector Location | Bottom |
| RF Connector Quantity, mid band | 8 |
| RF Connector Quantity, low band | 4 |
| RF Connector Quantity, total | 12 |

Remote Electrical Tilt (RET) Information

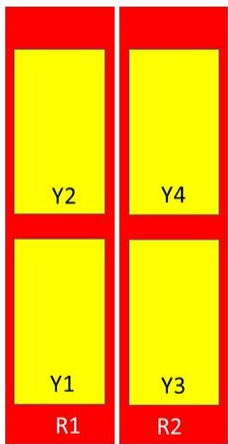
| | |
|---|-----------------------------------|
| RET Hardware | CommRET v2 |
| RET Interface | 8-pin DIN Female 8-pin DIN Male |
| RET Interface, quantity | 1 female 1 male |
| Input Voltage | 10–30 Vdc |
| Internal RET | Low band (2) Mid band (4) |
| Power Consumption, active state, maximum | 8 W |
| Power Consumption, idle state, maximum | 1 W |
| Protocol | 3GPP/AISG 2.0 (Single RET) |

RRV4-65B-R6-PS

Dimensions

| | |
|---------------------------------|---------------------|
| Width | 498 mm 19.606 in |
| Depth | 197 mm 7.756 in |
| Length | 1859 mm 73.189 in |
| Net Weight, antenna only | 37.2 kg 82.012 lb |

Array Layout



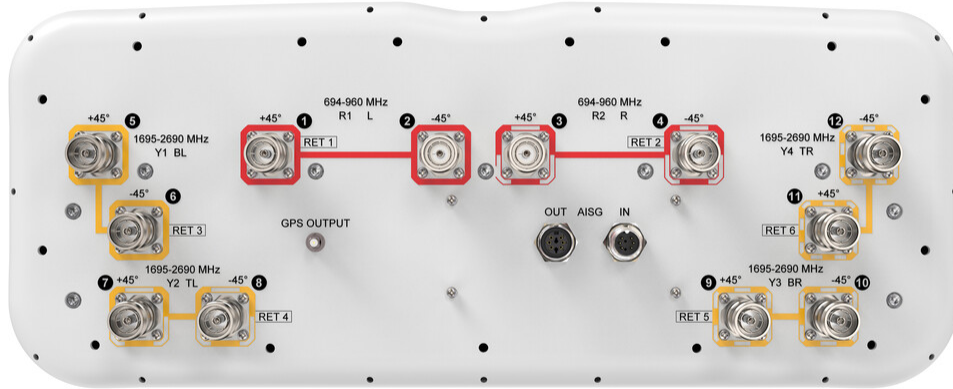
| Array | Freq (MHz) | Conns | RET (SRET) | AISG RET UID |
|-------|------------|-------|------------|----------------------|
| R1 | 698-960 | 1-2 | 1 | CPxxxxxxxxxxxxxxxxR1 |
| R2 | 698-960 | 3-4 | 2 | CPxxxxxxxxxxxxxxxxR2 |
| Y1 | 1695-2690 | 5-6 | 3 | CPxxxxxxxxxxxxxxxxY1 |
| Y2 | 1695-2690 | 7-8 | 4 | CPxxxxxxxxxxxxxxxxY2 |
| Y3 | 1695-2690 | 9-10 | 5 | CPxxxxxxxxxxxxxxxxY3 |
| Y4 | 1695-2690 | 11-12 | 6 | CPxxxxxxxxxxxxxxxxY4 |

Left Right
Bottom

(Sizes of colored boxes are not true depictions of array sizes)

Port Configuration

RRV4-65B-R6-PS



Electrical Specifications

| | |
|-----------------------------------|---------------------------------|
| Impedance | 50 ohm |
| Operating Frequency Band | 1695 – 2690 MHz 698 – 960 MHz |
| Polarization | ±45° |
| Total Input Power, maximum | 1,200 W @ 50 °C |

Electrical Specifications, BASTA

| Frequency Band, MHz | 698–806 | 790–894 | 890–960 | 1695–1920 | 1920–2200 | 2300–2400 | 2490–2690 |
|--|---------|---------|---------|-----------|-----------|-----------|-----------|
| Gain by all Beam Tilts, average, dBi | 14.5 | 14.8 | 15 | 15.4 | 16.1 | 16.4 | 16 |
| Gain by all Beam Tilts Tolerance, dB | ±0.5 | ±0.5 | ±0.5 | ±0.8 | ±0.4 | ±0.2 | ±0.4 |
| Beamwidth, Horizontal Tolerance, degrees | ±4 | ±3 | ±4 | ±5 | ±4 | ±7 | ±8 |
| Beamwidth, Vertical Tolerance, degrees | ±0.9 | ±0.7 | ±0.7 | ±0.8 | ±0.7 | ±0.4 | ±0.4 |
| USLS, beampeak to 20° above beampeak, dB | 20 | 19 | 18 | 16 | 17 | 18 | 16 |
| Front-to-Back Total Power at 180° ± 30°, dB | 19 | 20 | 21 | 28 | 28 | 27 | 26 |

RRV4-65B-R6-PS

Mechanical Specifications

| | |
|---|---|
| Wind Loading @ Velocity, frontal | 633.0 N @ 150 km/h (142.3 lbf @ 150 km/h) |
| Wind Loading @ Velocity, lateral | 192.0 N @ 150 km/h (43.2 lbf @ 150 km/h) |
| Wind Loading @ Velocity, maximum | 760.0 N @ 150 km/h (170.9 lbf @ 150 km/h) |
| Wind Loading @ Velocity, rear | 436.0 N @ 150 km/h (98.0 lbf @ 150 km/h) |
| Wind Speed, maximum | 241 km/h (150 mph) |

Packaging and Weights

| | |
|-----------------------|----------------------|
| Width, packed | 565 mm 22.244 in |
| Depth, packed | 309 mm 12.165 in |
| Length, packed | 2046 mm 80.551 in |
| Weight, gross | 49.6 kg 109.349 lb |

Regulatory Compliance/Certifications

| Agency | Classification |
|---------------|--|
| CHINA-ROHS | Above maximum concentration value |
| ISO 9001:2015 | Designed, manufactured and/or distributed under this quality management system |
| ROHS | Compliant/Exempted |
| UK-ROHS | Compliant/Exempted |



Included Products

| | | |
|----------|---|--|
| BSAMNT-3 | - | Wide Profile Antenna Downtilt Mounting Kit for 2.4 - 4.5 in (60 - 115 mm) OD round members. Kit contains one scissor top bracket set and one bottom bracket set. |
|----------|---|--|

* Footnotes

| | |
|-------------------------|---|
| Performance Note | Severe environmental conditions may degrade optimum performance |
|-------------------------|---|