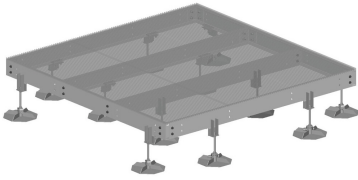


EQ-P1020-DF



Equipment Platform, 10 ft x 20 ft, base with twenty displacement legs

Product Classification

Product Type Equipment platform system

General Specifications

Legs, quantity 20

Dimensions

Height 546.1 mm | 21.5 in

Width 3048 mm | 120 in

Length 6096 mm | 240 in

Material Specifications

Material Type Hot dip galvanized steel

Mechanical Specifications

Load Capacity Up to 10,000 lb (4536 kg) loading

Packaging and Weights

Included Frame | Grating | Hardware | Legs

Packaging quantity 1

Weight, net 1,593.6 kg | 3,513.282 lb

Regulatory Compliance/Certifications

Agency	Classification
ISO 9001:2015	Designed, manufactured and/or distributed under this quality management system

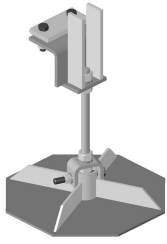
Included Products

EQ-P-DF – Weight Disbursement Leg for Equipment Platform

EQ-P1020-DF

EQ-P1020-B - Equipment Platform, 10 ft x 20 ft, base only

EQ-P-DF



Weight Disbursement Leg for Equipment Platform

Product Classification

Product Type Equipment platform system

Dimensions

Height 538.48 mm | 21.2 in

Width 393.7 mm | 15.5 in

Length 393.7 mm | 15.5 in

Material Specifications

Material Type Hot dip galvanized steel

Packaging and Weights

Included Legs

Packaging quantity 1

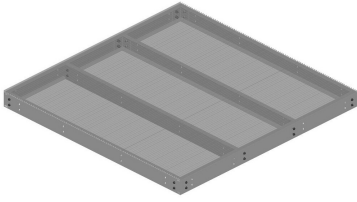
Weight, net 15.3 kg | 33.731 lb

Regulatory Compliance/Certifications

Agency	Classification
CHINA-ROHS	Above maximum concentration value
ISO 9001:2015	Designed, manufactured and/or distributed under this quality management system
ROHS	Compliant/Exempted
UK-ROHS	Compliant/Exempted



EQ-P1020-B



Equipment Platform, 10 ft x 20 ft, base only

Product Classification

Product Type Equipment platform system

General Specifications

Legs, quantity 0

Dimensions

Height 203.2 mm | 8 in

Width 3048 mm | 120 in

Length 6096 mm | 240 in

Material Specifications

Material Type Hot dip galvanized steel

Mechanical Specifications

Load Capacity Up to 10,000 lb (4536 kg) loading

Packaging and Weights

Included Frame | Grating | Hardware

Packaging quantity 1

Weight, net 1,363.5 kg | 3,005.999 lb

Regulatory Compliance/Certifications

Agency	Classification
ISO 9001:2015	Designed, manufactured and/or distributed under this quality management system