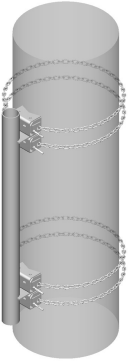


# CML-H60-63



Heavy Duty Chain Mount Kit with Stand-off, 16 ft chain, includes pipe

**OBSOLETE**

## Product Classification

**Product Type** Chain mount kit

## General Specifications

**Chains, quantity** 4

**Pipe, quantity** 1

**Sectors, quantity** 1

## Dimensions

**Height** 152.4 mm | 6 in

**Width** 203.2 mm | 8 in

**Length** 1,600.2 mm | 63 in

**Chain Length** 4,902.2 mm | 193 in

**Pipe Length** 1,600.2 mm | 63 in

**Mounting Diameter, maximum** 1524 mm | 60 in

**Mounting Diameter, minimum** 203.2 mm | 8 in

**Pipe Outer Diameter** 114.3 mm | 4.5 in

**Mounting Circumference, maximum** 4,775.2 mm | 188 in

**Mounting Circumference, minimum** 635 mm | 25 in

## Material Specifications

**Material Type** Hot dip galvanized steel

# CML-H60-63

---

## Mechanical Specifications

<b>Wind Rating</b>	125 mph (BWS) at 100 ft AGL
<b>Wind Rating Criteria</b>	One 8 ft standard microwave antenna, with radome and stiff arm
<b>Wind Rating Test Method</b>	TIA/EIA-222

## Packaging and Weights

<b>Included</b>	Chains   Pipe mounts
<b>Packaging quantity</b>	1
<b>Weight, net</b>	75.2 kg   165.787 lb

## Regulatory Compliance/Certifications

<b>Agency</b>	<b>Classification</b>
ISO 9001:2015	Designed, manufactured and/or distributed under this quality management system



## Included Products

- CM-H60-B – Heavy Duty Chain Mount Base Kit, 16 ft chain
- MT-395 – Standard Pipe Mount, 4-1/2 in OD x 63 in

## \* Footnotes

<b>Wind Rating</b>	BWS—Base Wind Speed; FBC—Florida Building Code
--------------------	--