

FACT CABLE TERMINATION UNIT (FACT-ACCCTULLT)

Contents

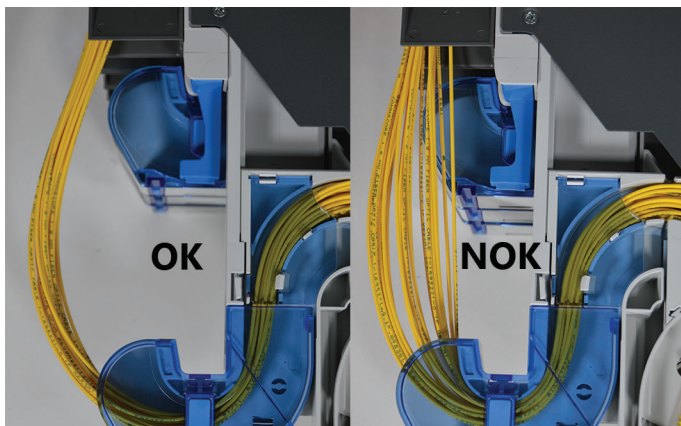
1. General product information	1	5.6. Loose tube Ø > 2,5 mm and possibility to divide bare fibers.....	4
2. Warnings and caution	1	6. Routing and termination on FACT-xESPL (splice element)	5
3. Product image	1	6.1. Termination.....	5
4. Kit content	2	6.2. Inside routing and termination.....	6
5. Cable preparation	2	7. Routing and termination on FACT-xExHP (splice/patch element)	7
5.1. General cable preparation	2	7.1. Termination.....	7
5.2. Cable preparation without central strength member.....	3	7.2. Inside routing and termination.....	7
5.3. Cable preparation with central strength member.....	3	8. Trademarks	9
5.4. Loose tube Ø < 2,5 mm handling.....	4	9. Contact Information	9
5.5. 1x Flex tube Ø 12 mm.....	4		

1. General product information

- The loose tube cable termination unit is designed to accommodate 1x fiber cable with an outer cable diameter between Ø 8.5 mm - Ø 15 mm or 1x flex tube Ø 12 mm.
- The cable needs to be flexible enough to allow a bend radius less than 75 mm for IFC cable strength members with a diameter less than Ø 2.5 mm.
- The kit contains all parts to install 1 piece of fiber cable / flex tube on 1, 2 or 3 FACT elements.

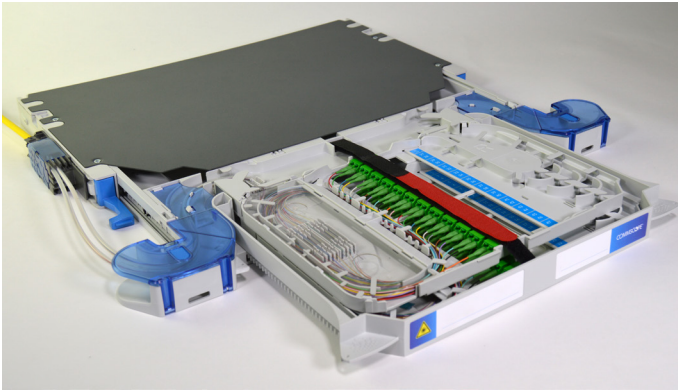
2. Warnings and caution

- Fiber optic cables may be damaged if bent or curved to a radius that is less than the recommended minimum bend radius. Always observe the recommended bend radius limit when installing fiber optic cables and patch cords.
- Exposure to laser radiation can seriously damage the retina of the eye. Do not look into the ends of any optical fiber. Do not assume the laser power is turned off or that the fiber is disconnected at the other end.

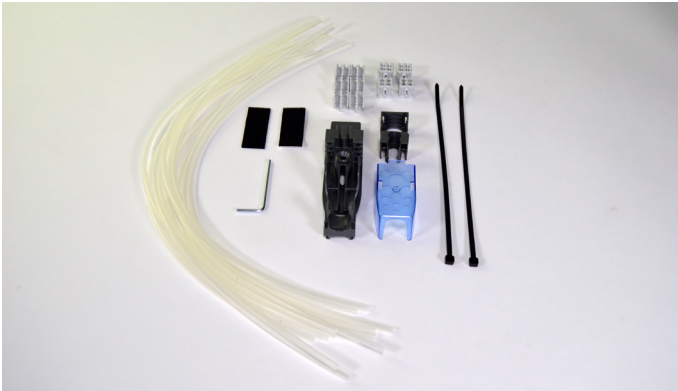


- Pay attention to the routing of the patch cords. These should move/hang freely, where they leave the bend control. If you see that there is tension occurring on the patch cords, please reroute these.

3. Product image



4. Kit content



- 1x Cable termination unit large
- 1x Cover for flex tube Ø 12 mm
- 1x Cable termination cover
- 12x Transportation tubes 460 mm
- 8x Low tube holders
- 4x Tube holder
- 2x Foam
- 2x Tie wrap black
- 1x Allen key

Note: Check kit content and length of tubes before installation.

For FACT-xExHP 460 mm is ok, cut these to 430 mm for FACT-xESPL!

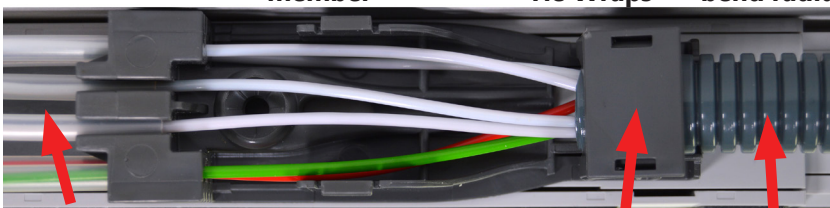


Fopt tube

Strength member

Foam + Tie Wraps

Cable Ø < 15 mm and bend radius < 75 mm



Fopt tube

Cover

Flex tube

Example when installed.

5. Cable preparation

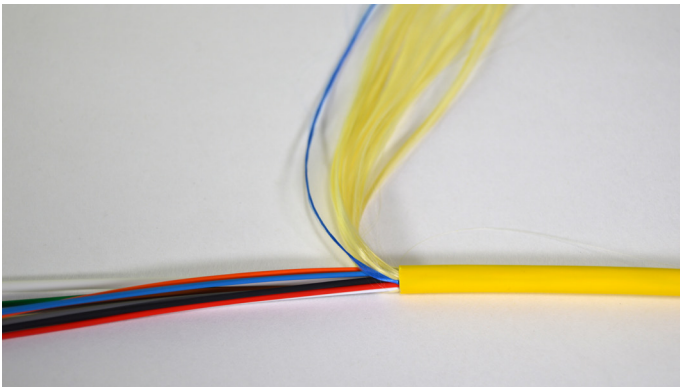
5.1. General cable preparation



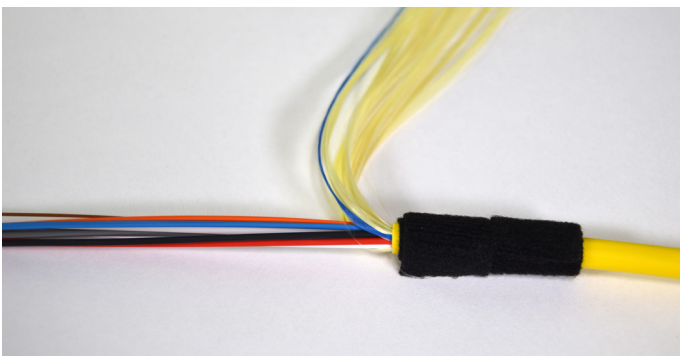
5.1.1. Mark the stripping point on the cable jacket. Make sure that you have at least 2 meter of cable left.



5.1.2. Cut the cable jacket at the marked point and approx. 150 mm from the cable end to get access to the rip cord.

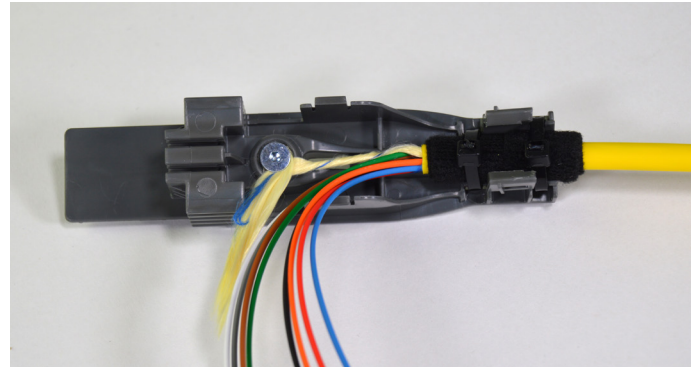


5.1.3. Use the rip cord to strip off the cable jacket.

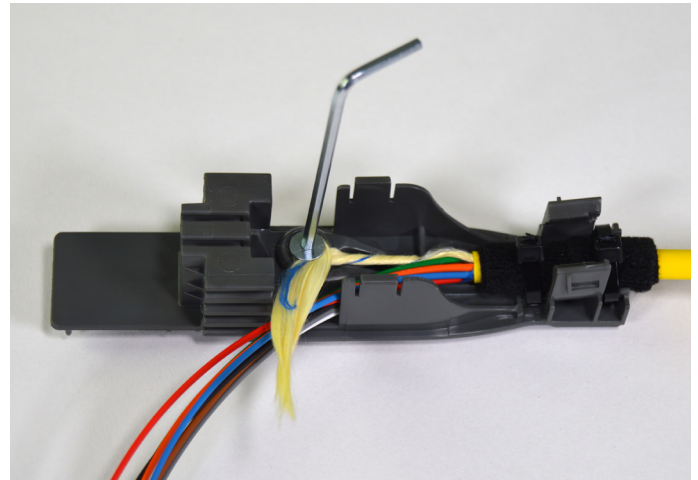


5.1.4. Separate the aramid yarns from the loose tubes. Apply 2 pieces of foam.

5.2. Cable preparation without central strength member

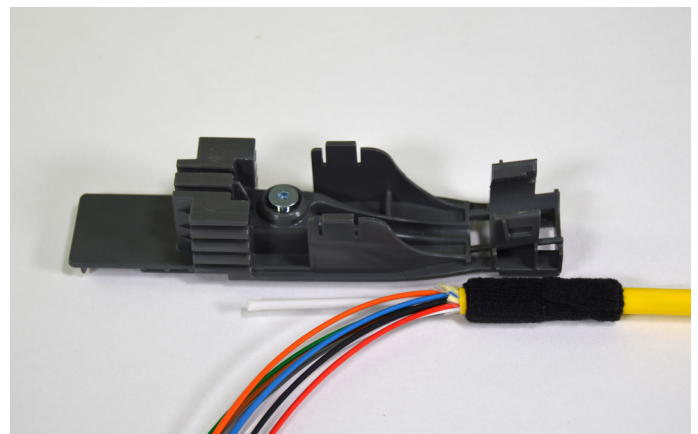


5.2.1. Fix the cable with 2 tie wraps. Route the aramid yarns to the backside of the bracket.

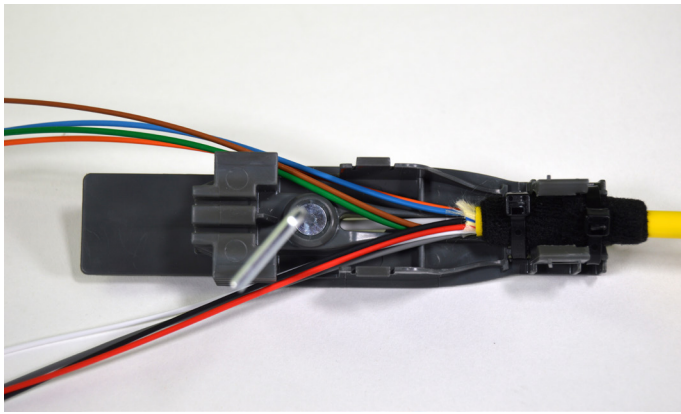


5.2.2. Make several turns around the strength member connector to fix the aramid yarns, by using the allen key.

5.3. Cable preparation with central strength member

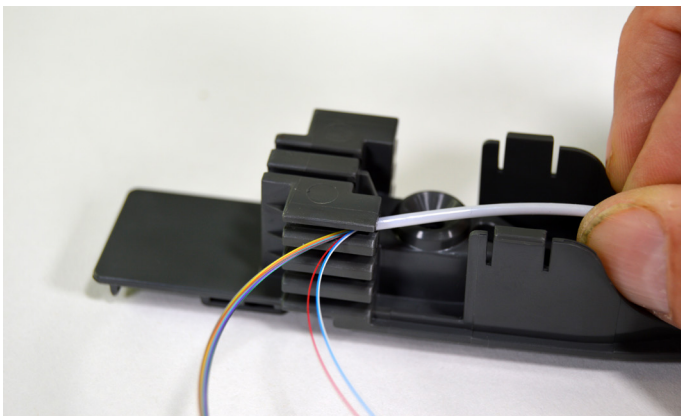


5.3.1. Cut the strength member on length of +/- 55 mm.

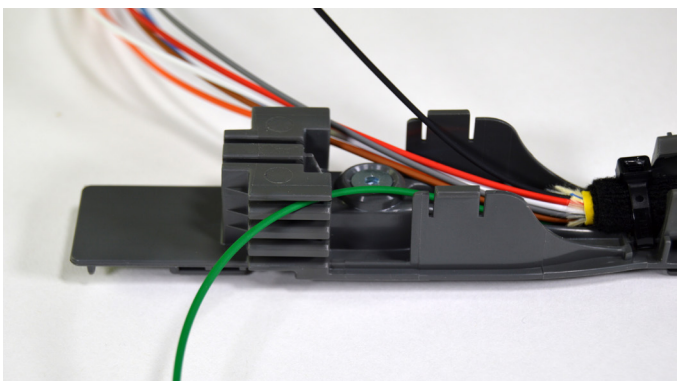


5.3.2. Feed the strength member to the backside.
Fix the cable with 2 tie wraps and cut them.
Fix the strength member by using the allen key.

5.4. Loose tube $\varnothing < 2,5$ mm handling



5.4.1. If loose tubes are $\varnothing 2-2,5$ mm, guide the tubes one by one into the tube holder of the cable termination unit.

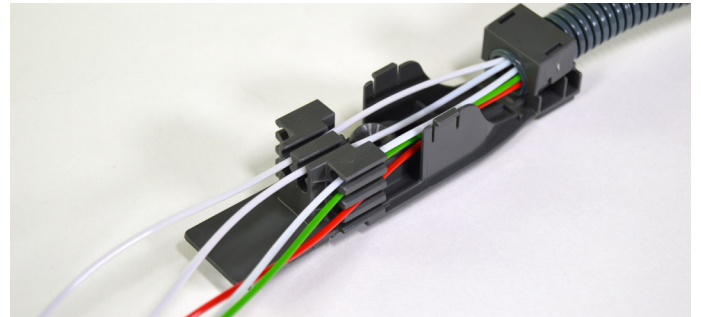


5.4.2. If loose tube are $< \varnothing 2$ mm, guide them via the side slit into the tube holder of the cable termination unit.

5.5. 1x flex tube $\varnothing 12$ mm

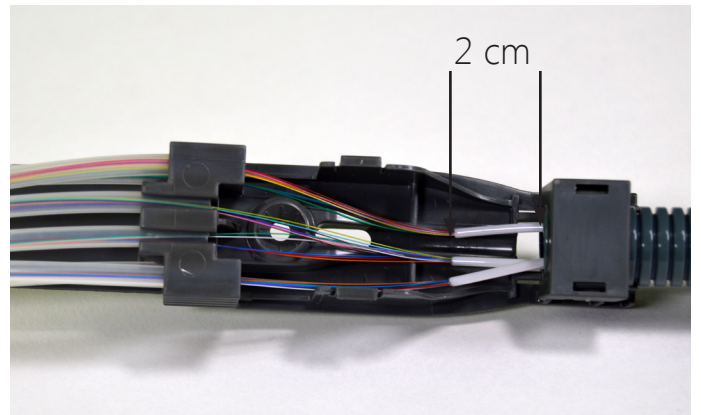


5.5.1. Install the $\varnothing 12$ mm flex tube with special flex cover as shown in the picture.

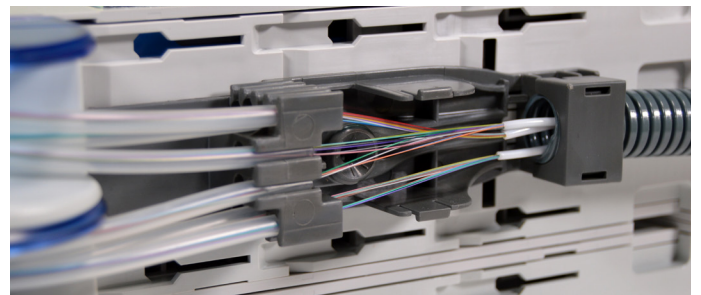


5.5.2. Feed all loose tubes through, as shown.

5.6. Loose tube $\varnothing > 2,5$ mm and possibility to divide bare fibers



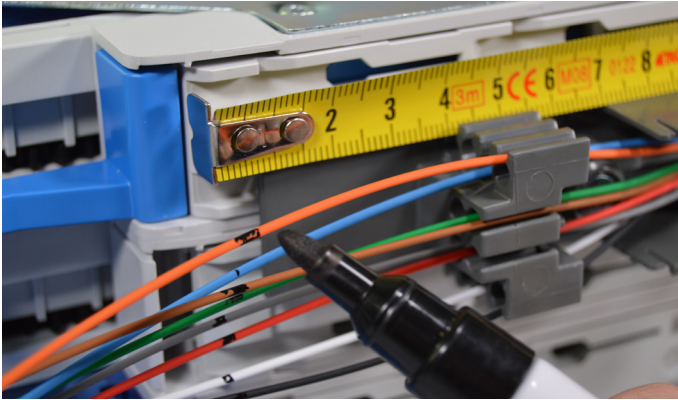
5.6.1. For loose tubes $\varnothing > 2,5$ mm and dividing bare fibers, secure the cable and flex tube in the rack where the FACT is mounted. Feed the loose tubes into the flex. Mark the loose tubes at 2 cm. Strip the loose tube and clean the fibers.



5.6.2. Example of dividing bare fibers to different transportation tubes.

6. Routing and termination on FACT-xESPL (splice element)

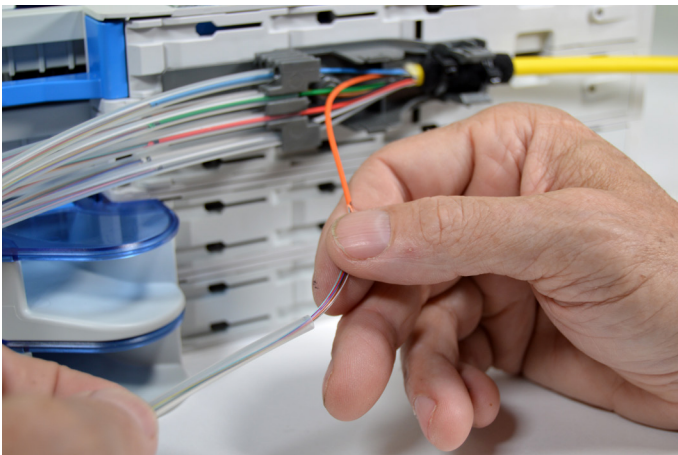
6.1. Termination



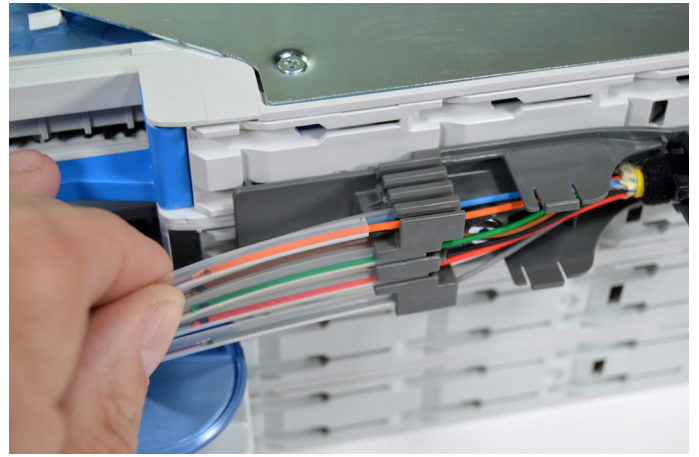
6.1.1. Slide on the CTU bracket. Mark the loose tubes at 4 cm of the tube holder.



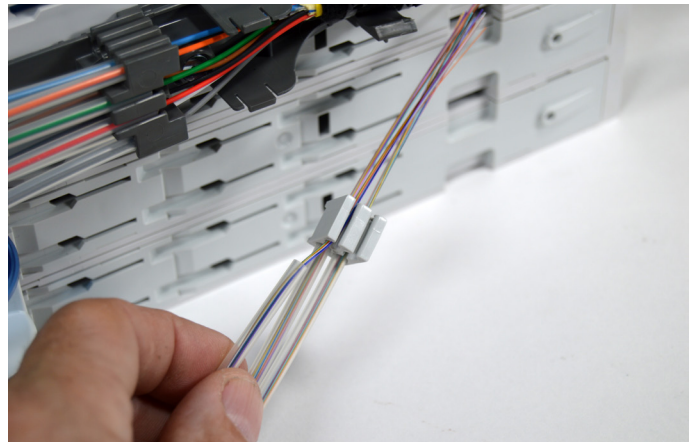
6.1.2. Strip the loose tubes at the marked point and clean the fibers.



6.1.5. Feed the fibers into the transportation tubes.
Note: These transportation tubes have to be cut to 430mm (for FACT-xESPL) first!



6.1.6. Slide the transportation tube over the loose tube into the tube holder. Make sure the transportation tube is pushed to the end of the tube holder.



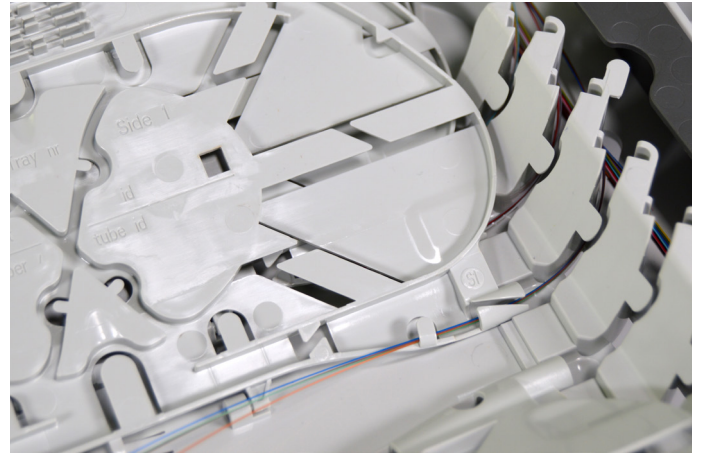
6.1.7. Slide the other side of the transportation tubes in the 2nd tube holder. Avoid crossings. Make sure that the transportation tubes are pushed in, until the end.



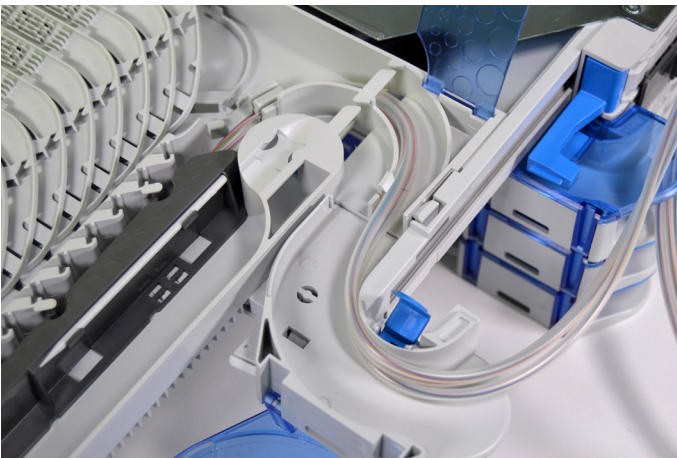
6.1.8. Open the lids. Push / slide all transportation tubes one by one into the tray.



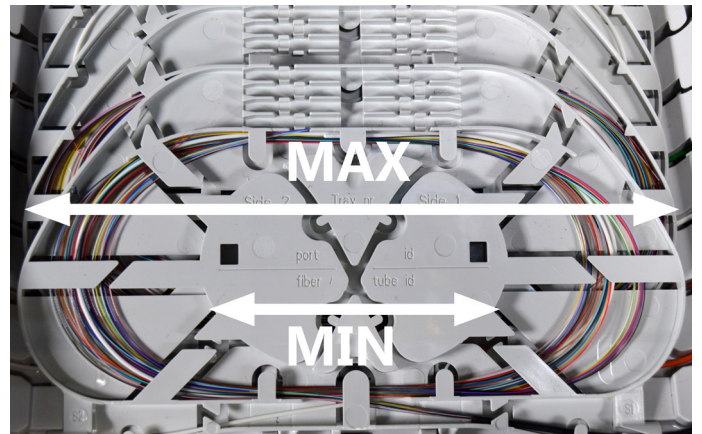
6.1.9. Push and click the tube holder into the tray. Route the transportation tubes into the FACT element.



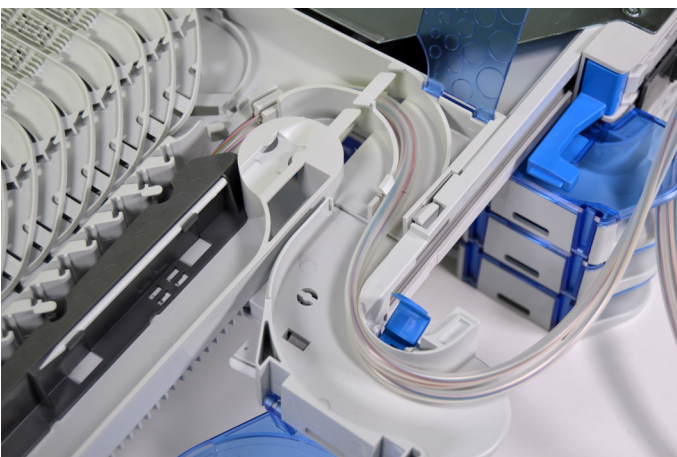
6.2.2. Route the fiber throughout the groove plate to the dedicated splice trays.



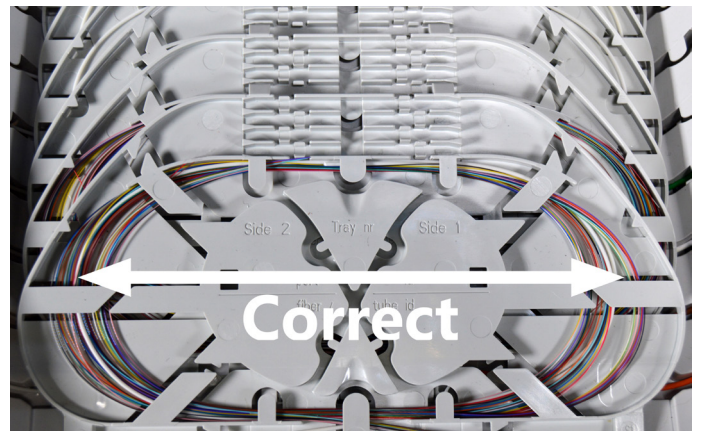
6.1.10. If needed, repeat previous step for transportation tubes 5 to 8.



6.2. Inside routing and termination



6.2.1. Overview



6.12. Pay attention to store the fiber correctly. A properly stored fiber doesn't touch the bend radius limiter on inner or outer side and can move freely.

7. Routing and termination on FACT-xExHP (splice/patch element)

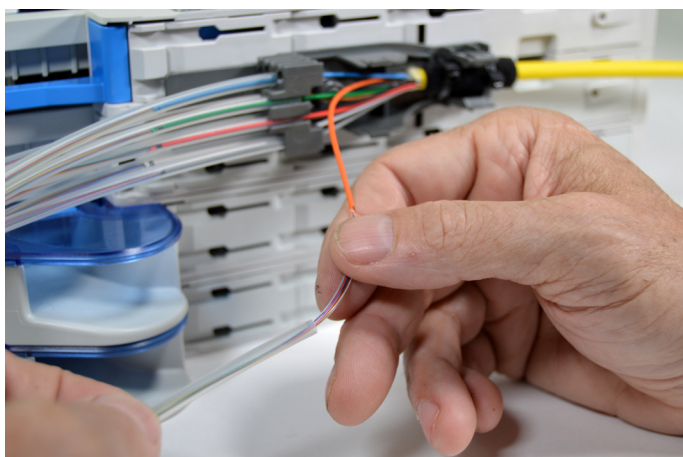
7.1. Termination



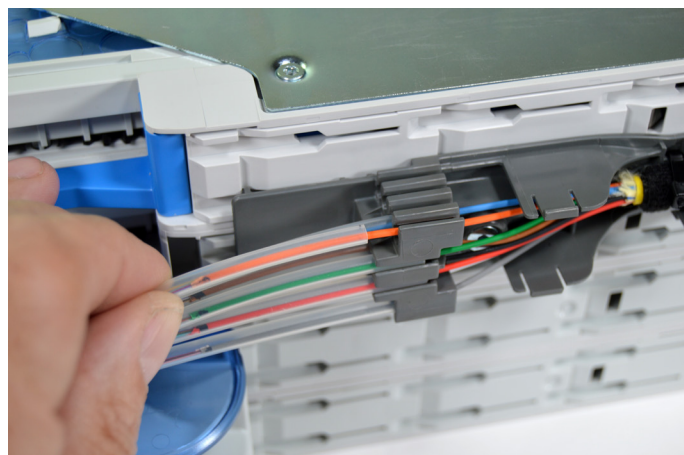
7.1.1. Slide on the CTU bracket. Mark the loose tubes at 4 cm from the CTU bracket.



7.1.2. Strip the loose tubes at the marked point and clean the fibers.



7.1.3. Feed the fibers into the -correct length- transportation tubes.

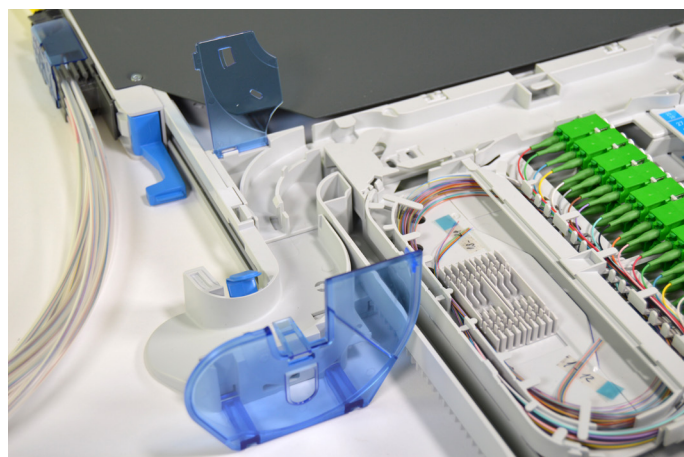


7.1.4. Feed the transportation tube into the tube holder. Make sure that the transportation tube is pushed in, until the end.

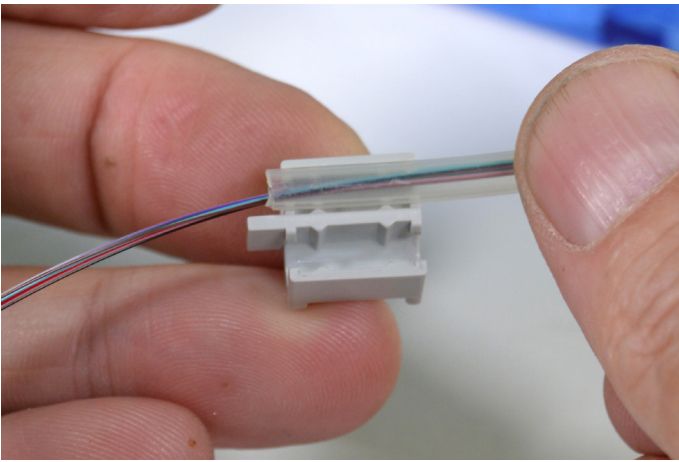
7.2. Inside routing and termination



7.2.1. Remove the transparent cover of the splice island. Remove the velcro, if needed.



7.2.2. Open the lids (front and back).



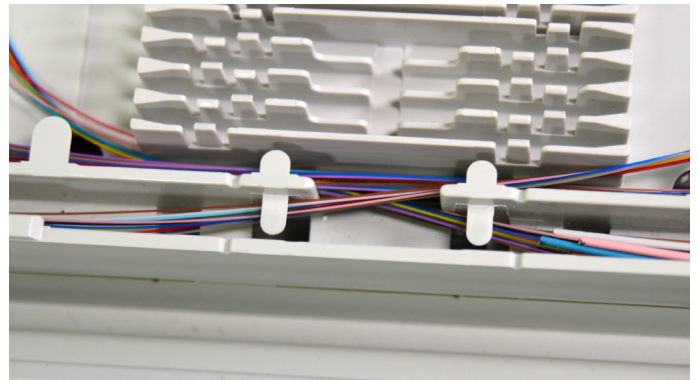
7.2.3. Place the first tube in the low tube holder, in the left position (when splicing on the left side)



7.2.6. Guide the fibers into the splice island.



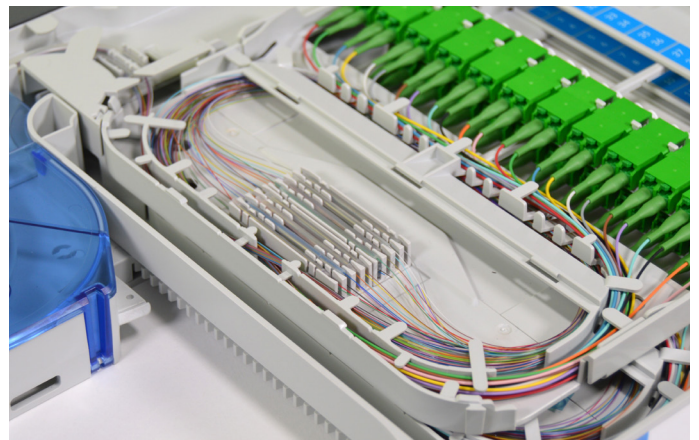
7.2.4. Mount the tube holder in the tray. A second tube holder can be mounted, if needed.



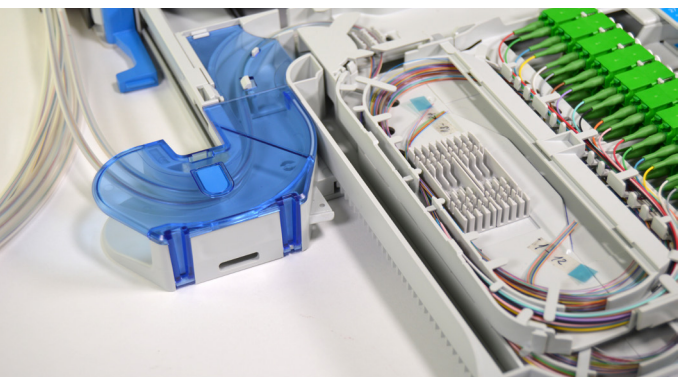
7.2.7. Make sure that the fibers follow the correct path (as shown).



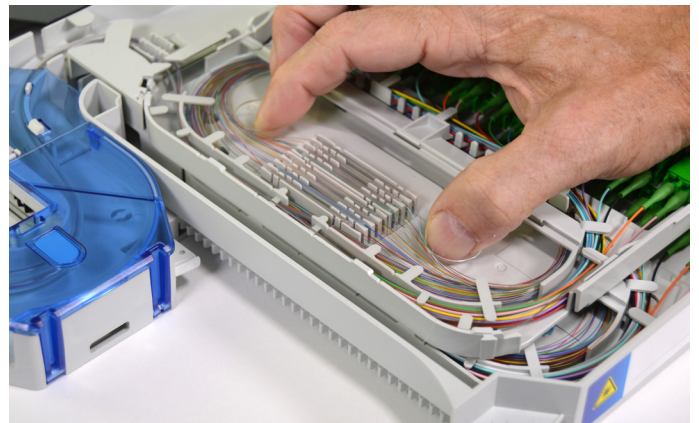
7.2.5. Place the additional tube, if needed.



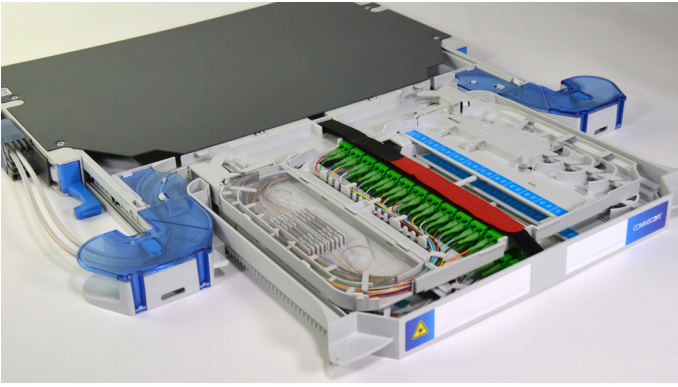
7.2.8. Take the fibers out of the splice island, splice them and reroute them in the splice island.



7.2.5. Guide the tubes through the channels and close the lids.



7.2.9. Put the transparent cover back on the splice island.



7.2.10. Put the velcro back (if it was removed) and close the drawer later.

8. Trademarks

All trademarks identified by ® or ™ are registered trademarks or trademarks, respectively, of CommScope, Inc. This document is for planning purposes only and is not intended to modify or supplement any specifications or warranties relating to CommScope products or services. CommScope is committed to the highest standards of business integrity and environmental sustainability, with a number of CommScope's facilities across the globe certified in accordance with international standards, including ISO 9001, TL 9000, and ISO 14001.

Further information regarding CommScope's commitment can be found at www.commscope.com/About-Us/Corporate-Responsibility-and-Sustainability.

9. Contact information

Visit our website or contact your local CommScope representative for more information.

For technical assistance, customer service, or to report any missing/damaged parts, visit us at:
<http://www.commscope.com/SupportCenter>

This product may be covered by one or more U.S. patents or their foreign equivalents.
For patents, see www.cs-pat.com