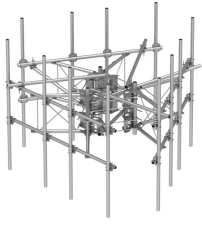


# MCG23HDX-12MB



G23HDX High Capacity 3-Sector Monopole Base Frame with 12.5 ft x 2.88 in OD face pipes. Antenna Pipes/pipe mounts not included.

## Product Classification

<b>Product Type</b>	High capacity monopole sector frame
<b>Product Series</b>	G2
<b>Ordering Note</b>	NSTD445 Compliant

## General Specifications

<b>Mounting</b>	Monopole, 381–1270 mm (15–50 in) OD
<b>Pipe, quantity</b>	0
<b>Sectors, quantity</b>	3

## Dimensions

<b>Face Width</b>	3.81 m   12.5 ft
<b>Width</b>	3,810 mm   150 in
<b>Face Support Pipe Diameter</b>	73.025 mm   2.875 in
<b>Mounting Diameter, maximum</b>	1270 mm   50 in
<b>Mounting Diameter, minimum</b>	381 mm   15 in
<b>Pipe Outer Diameter</b>	73.025 mm   2.875 in
<b>Stand-off Distance</b>	1,066.8 mm   42 in

## Material Specifications

<b>Material Type</b>	Hot dip galvanized steel
----------------------	--------------------------

## Mechanical Specifications

<b>Wind Rating</b>	For Specifications, please contact <a href="mailto:steelproducts@commscope.com">steelproducts@commscope.com</a> or call 800-255-1479
<b>Wind Rating Test Method</b>	TIA/EIA-222

## Packaging and Weights

<b>Included</b>	Mounting hardware   Ring mounts (2)   Sector frames (3)   Stiff arm
-----------------	---------------------------------------------------------------------

# MCG23HDX-12MB

---

**Packaging quantity** 1  
**Weight, net** 818.008 kg | 1,803.4 lb

## Regulatory Compliance/Certifications

<b>Agency</b>	<b>Classification</b>
CHINA-ROHS	Below maximum concentration value
REACH-SVHC	Compliant as per SVHC revision on <a href="http://www.commscope.com/ProductCompliance">www.commscope.com/ProductCompliance</a>
ROHS	Compliant
UK-ROHS	Compliant



## \* Footnotes

**Wind Rating** BWS—Base Wind Speed; FBC—Florida Building Code