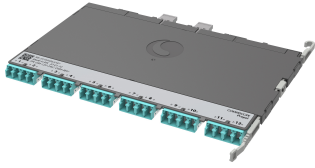


# 760252346 | PPL-DM-12U-24LC-OM4-BEU



Propel ULL Multimode OM4 MPO-12 Distribution Module, 12 duplex LC to 2X12f MPO/UPC non-pinned, Method B Enhanced

- Ultra-low loss (ULL) with Method B Enhanced polarity
- Can be installed and removed from front or rear of panel
- Serialized QR code provides easy access to factory optical test results
- This component requires 6 of the 12 lanes on the Propel Panel blade

## Product Classification

<b>Regional Availability</b>	Asia   Australia/New Zealand   EMEA   Latin America   North America
<b>Portfolio</b>	SYSTIMAX®
<b>Product Type</b>	Breakout module
<b>Product Brand</b>	Propel
<b>Product Series</b>	PPL

## General Specifications

<b>Functionality</b>	Breakout
<b>Color, front</b>	Aqua
<b>Color, rear</b>	Gray
<b>Interface, front</b>	LC/UPC
<b>Interface Feature, front</b>	Internal shutters
<b>Interface, rear</b>	MPO
<b>Interface Feature, rear</b>	Internal shutters   Key up/up   Standard   Unpinned
<b>Polarity</b>	Method B Enhanced (ULL)
<b>Total Fibers, quantity</b>	24
<b>Total Ports, quantity, front</b>	12
<b>Total Ports, quantity, rear</b>	2

## Dimensions

<b>Height</b>	11 mm   0.433 in
<b>Width</b>	98 mm   3.858 in
<b>Depth</b>	170 mm   6.693 in

## Optical Specifications

# 760252346 | PPL-DM-12U-24LC-OM4-BEU

---

<b>Fiber Mode</b>	Multimode
<b>Fiber Type</b>	OM4, LazrSPEED® 550
<b>Insertion Loss, maximum</b>	0.35 dB

## Environmental Specifications

<b>Qualification Standards</b>	IEC 61753-1   TIA-568.3-D
<b>Safety Standard</b>	CE   CSA   UL   UL 62368

## Packaging and Weights

<b>Packaging quantity</b>	1
---------------------------	---

## Regulatory Compliance/Certifications

<b>Agency</b>	<b>Classification</b>
CHINA-ROHS	Below maximum concentration value
REACH-SVHC	Compliant as per SVHC revision on <a href="http://www.commscope.com/ProductCompliance">www.commscope.com/ProductCompliance</a>
ROHS	Compliant
UK-ROHS	Compliant

