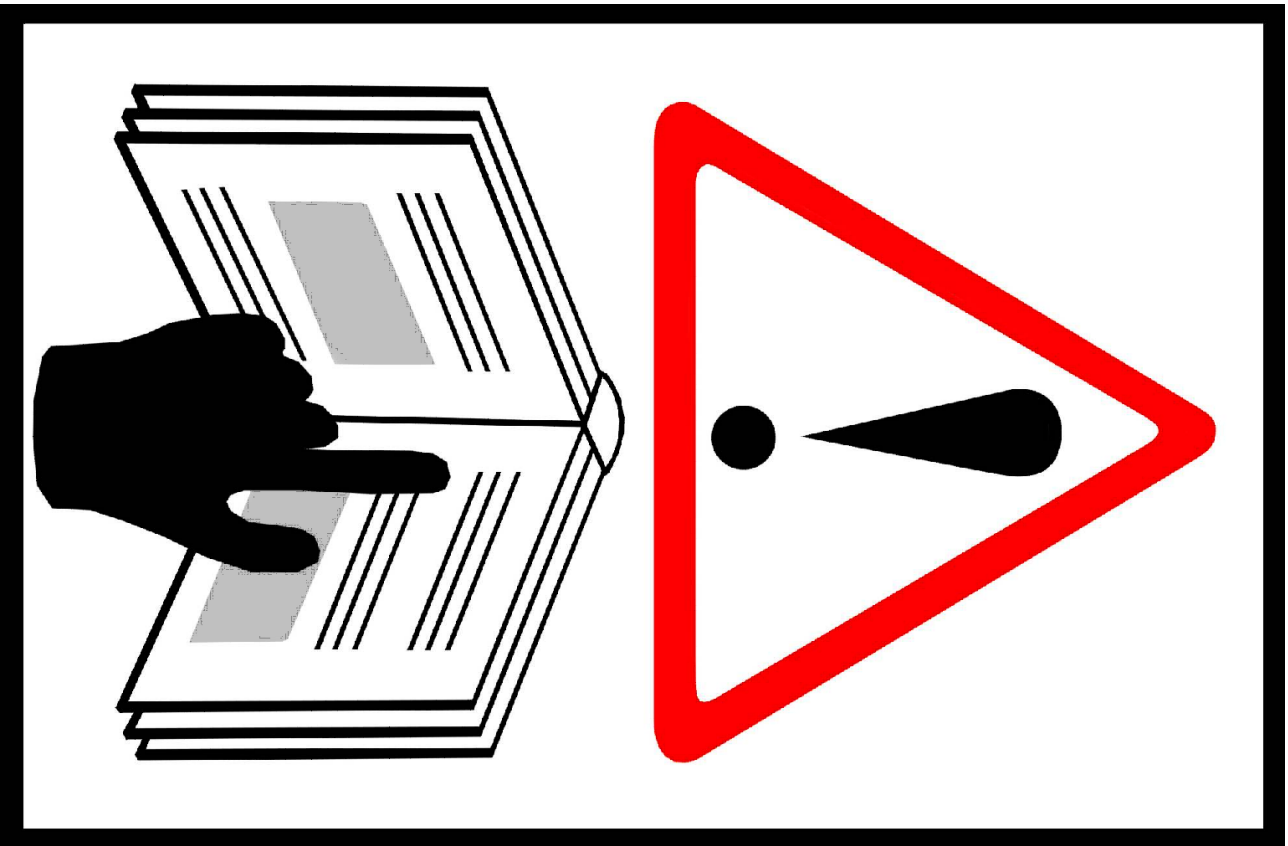




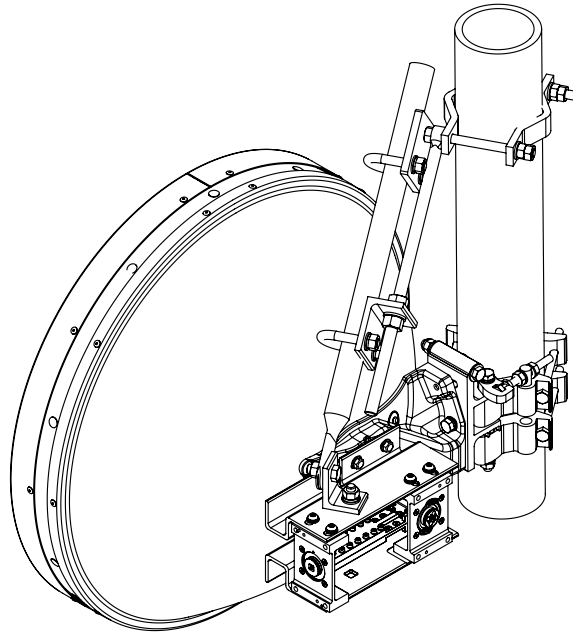
7836888 Rev:E



# **IMPORTANT!**

**INSTALLATION  
INSTRUCTIONS**

**READ THIS MANUAL  
FULLY BEFORE  
UNPACKING AND  
ASSEMBLING  
ANTENNA**



## SAFETY

**ANTENNA INSTALLATION, MAINTENANCE OR REMOVAL MUST BE PERFORMED BY QUALIFIED EXPERIENCED INSTALLER.**

It is essential that all appropriate national and local safety regulations be strictly observed to ensure the safety of personnel and to prevent damage to the product. CommScope cannot accept responsibility for accidents resulting from non-compliance with such regulations.

The Antenna is designed to attach to a vertical tower pipe of diameter 50-120mm.  
The mount provides adjustment ranges of  $\pm 15^\circ$  fine elevation and  $\pm 180^\circ$  ( $\pm 9^\circ$  Fine) azimuth.

**Read this installation instruction bulletin and all others provided completely before commencing antenna assembly and installation.**

## WARNING

**Do not use any installation components (screws, nuts, etc) other than supplied as part of product or recommended by the supplier.**

CommScope  
1100 CommScope Place SE P.O. Box 339, Hickory, NC 28603-0339  
(828) 324-2200 (800) 982-1708  
www.commscope.com

Notice: CommScope disclaims any liability or responsibility for the results of improper or unsafe installation, inspection, maintenance, or removal practices.  
Aviso: CommScope no acepta ninguna obligación ni responsabilidad como resultado de prácticas incorrectas o peligrosas de instalación, inspección, mantenimiento o retiro. Avis : CommScope décline toute responsabilité pour les conséquences de procédures d'installation, d'inspection, d'entretien ou de retrait incorrectes ou dangereuses. Hinweis: CommScope lehnt jede Haftung oder Verantwortung für Schäden ab, die aufgrund unsachgemäßer Installation, Überprüfung, Wartung oder Demontage auftreten.  
Atenção: A CommScope abdica do direito de toda responsabilidade pelos resultados de práticas inadequadas e sem segurança de instalação, inspeção, manutenção ou remoção. Avvertenza: CommScope declina eventuali responsabilità derivanti dall'esecuzione di procedure di installazione, ispezione, manutenzione e smontaggio improprie o poco sicure.

注意: CommScope 公司申明對於不恰當或不安全的安裝、檢驗、維修或拆卸操作所導致的后果不負任何義務和責任  
© June, 2018 CommScope

Customer Service 24 hours  
North America: +1-800-255-1479 (toll free)  
Any country: +1-779-435-6500  
email: acicustomersupportcenter@commscope.com





## LIST OF CONTENTS

SAFETY INSTRUCTIONS	4
TOOLS REQUIRED	6
SUPPLIED PRODUCT	7
UNPACKING MOUNT AND STRUT KIT	8
MOUNT ASSEMBLY	10
STRUT ASSEMBLY	12
INTEGRATION ASSEMBLY AND ALIGNMENT	13
ANTENNA MOUNTING AND ALIGNMENT	16
STRUT ATTACHMENT	19
POLARIZATION ADJUSTMENT	20
STRUT ATTACHMENT COMPLETION	22
GENERAL INFORMATION	24

### CommScope

1100 CommScope Place SE P.O. Box 339, Hickory, NC 28603-0339  
(828) 324-2200 (800) 982-1708  
www.commscope.com

Notice: CommScope disclaims any liability or responsibility for the results of improper or unsafe installation, inspection, maintenance, or removal practices.

Aviso: CommScope no acepta ninguna obligación ni responsabilidad como resultado de prácticas incorrectas o peligrosas de instalación, inspección, mantenimiento o retiro. Avis : CommScope décline toute responsabilité pour les conséquences de procédures d'installation, d'inspection, d'entretien ou de retrait incorrectes ou dangereuses. Hinweis: CommScope lehnt jede Haftung oder Verantwortung für Schäden ab, die aufgrund unsachgemäßer Installation, Überprüfung, Wartung oder Demontage auftreten.

Atenção: A CommScope abdica do direito de toda responsabilidade pelos resultados de práticas inadequadas e sem segurança de instalação, inspeção, manutenção ou remoção. Avvertenza: CommScope declina eventuali responsabilità derivanti dall'esecuzione di procedure di installazione, ispezione, manutenzione e smontaggio improprie o poco sicure.

注意: CommScope 公司申明對於不恰當或不安全的安裝、檢驗、維修或拆卸操作所導致的後果不負任何義務和責任  
© June, 2018 CommScope

### Customer Service 24 hours

North America: +1-800-255-1479 (toll free)  
Any country: +1-779-435-6500  
email: acicustomersupportcenter@commscope.com





## SAFETY INSTRUCTIONS

### INTRODUCTION



**NOTE:** Reduce the risk of accidents by studying all the instructions carefully before you start working.

The safety information in the relevant manuals presupposes that any person performing work on CommScope products or systems has the education, training and competence required to perform the task correctly.

### SAFETY REQUIREMENTS AND REGULATIONS

The safety requirements in the following sections must be followed to avoid personal injury and damage to tangible property.

It is the responsibility of the installer to ensure that local regulations and the safety instructions in this manual are known and followed.

Use local safety regulations where these are mandatory. The safety instructions in this manual shall be used as a supplement to the local regulations.

In case of conflict between the safety instructions in this manual and the local safety regulations, the local safety regulations shall prevail if these are mandatory. If the local regulations are not mandatory the safety instructions in this manual shall prevail.

### PERSONNEL

Installation and service must be carried out by authorized personnel having the appropriate technical training and experience necessary to be cognizant of hazards during installation and service, and of measures to minimize any danger to themselves or any other person.

### INSTALLATION HARDWARE

Do not use any installation components (for example screws and nuts) other than those enclosed with the product or recommended by CommScope.



Use protective wear to avoid skin contact with conductive grease. Keep away from mouth. Wash thoroughly after use with liberal amounts of liquid soap and rinse with water. Do not store open near food or food substances.

Contents: Oil, clay & zinc dust.





## INSTALLATION PROCEDURES & TOOLS

The installation procedures in this manual must be followed. Make sure that:

- Working instructions are followed.
- Recommended tools are used.
- Adequate safety devices are used.
- Adequate care is taken to prevent damage to antenna parts.
- The risk of falling and falling objects is known.
- Tighten all hardware to the specified torque. The integrity of the antenna depends on all fasteners being tightened correctly.

## ANNUAL INSPECTION

Antenna systems should be inspected once a year by qualified personnel to verify proper installation, maintenance, and condition of equipment.

## SAFETY SYMBOLS & DEFINITIONS

### HOISTING



#### WARNING!

Falling objects can cause accidents.

- Use only tested and approved hoisting equipment in accordance with the instructions supplied with the equipment. Appropriately trained personnel must operate the hoisting device.
- Always hoist the equipment in the specified hoisting points.
- Never walk under hoisted loads.
- Follow local regulations for safety clothing and safety equipment for hoisting or moving goods.

## WORKING AT HEIGHTS



#### WARNING!

Some working areas involve the risk of accidents caused by falling or by falling objects





## Tools Required

Tools Required	Thread Diameter in mm				
	M3	M8	M10	M12	M16
Ring and Open Spanner (A/F)	-	13mm	17mm	19mm	24mm
Sockets (A/F)	-	13mm	17mm	19mm	24mm
Allen Key	1.5mm	-	-	8mm	-
Spirit Level					
Torque Wrench	See Table 2 for values				

Table 1 Required Tools

Fastener Torque Specification (unless otherwise stated)					
Torque Values in Nm (lb.ft) for each fastener $\pm 5\%$					
Fastener Size	M3	M8	M10	M12	M16
Stainless Steel	1 (0.7)	19 (14)	38 (28)	65 (48)	121 (89)
Galvanised Steel	0.6 (0.4)	11 (8)	22 (16)	38 (28)	95 (70)

Table 2 Fastener Torque Specification

**CommScope**  
1100 CommScope Place SE P.O. Box 339, Hickory, NC 28603-0339  
(828) 324-2200 (800) 982-1708  
www.commscope.com

Notice: CommScope disclaims any liability or responsibility for the results of improper or unsafe installation, inspection, maintenance, or removal practices.  
Aviso: CommScope no acepta ninguna obligación ni responsabilidad como resultado de prácticas incorrectas o peligrosas de instalación, inspección, mantenimiento o retiro. Avis : CommScope décline toute responsabilité pour les conséquences de procédures d'installation, d'inspection, d'entretien ou de retrait incorrectes ou dangereuses. Hinweis: CommScope lehnt jede Haftung oder Verantwortung für Schäden ab, die aufgrund unsachgemäßer Installation, Überprüfung, Wartung oder Demontage auftreten.  
Atenção: A CommScope abdica do direito de toda responsabilidade pelos resultados de práticas inadequadas e sem segurança de instalação, inspeção, manutenção ou remoção. Avvertenza: CommScope declina eventuali responsabilità derivanti dall'esecuzione di procedure di installazione, ispezione, manutenzione e smontaggio improprie o poco sicure.

注意: CommScope 公司申明對於不恰當或不安全的安裝、檢驗、維修或拆卸操作所導致的後果不負任何義務和責任  
© June, 2018 CommScope

**Customer Service 24 hours**  
North America: +1-800-255-1479 (toll free)  
Any country: +1-779-435-6500  
email: acicustomersupportcenter@commscope.com

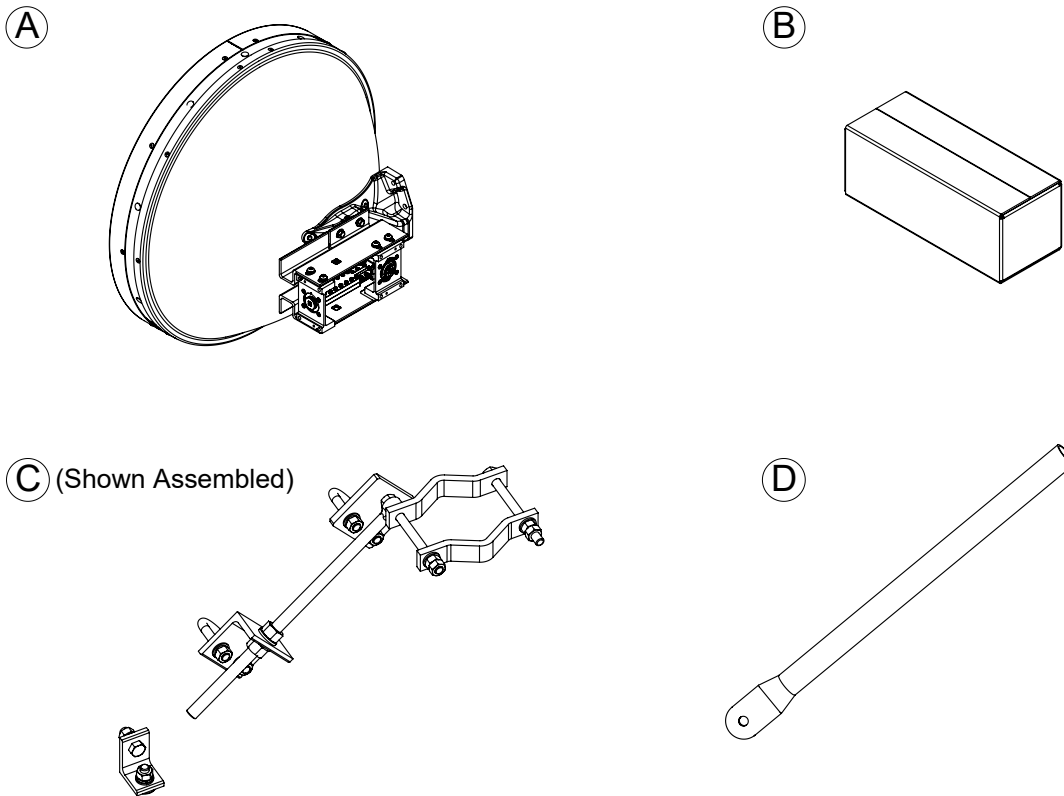




## Supplied Product

Item	Qty	Description
A	1	Reflector Assembly
B	1	Mount Kit
C	1	Strut Hardware Kit
D	1	Strut
E	2	Customer Interfaces (not shown)

Table 3 Supplied Product



**⚠ NOTE: UNPACKING (B) & (C) SEE PAGES 8/9 FOR DETAIL MOUNT AND STRUT KIT**

**NOTE: PLACE REFLECTOR ASSEMBLY RADOME FACE DOWN ENSURING SURFACE IS CLEAN AND FREE FROM DEBRIS .**

**CommScope**  
1100 CommScope Place SE P.O. Box 339, Hickory, NC 28603-0339  
(828) 324-2200 (800) 982-1708  
www.commscope.com

Notice: CommScope disclaims any liability or responsibility for the results of improper or unsafe installation, inspection, maintenance, or removal practices.  
Aviso: CommScope no acepta ninguna obligación ni responsabilidad como resultado de prácticas incorrectas o peligrosas de instalación, inspección, mantenimiento o retiro. Avis : CommScope décline toute responsabilité pour les conséquences de procédures d'installation, d'inspection, d'entretien ou de retrait incorrectes ou dangereuses. Hinweis: CommScope lehnt jede Haftung oder Verantwortung für Schäden ab, die aufgrund unsachgemäßer Installation, Überprüfung, Wartung oder Demontage auftreten.  
Atenção: A CommScope abdica do direito de toda responsabilidade pelos resultados de práticas inadequadas e sem segurança de instalação, inspeção, manutenção ou remoção. Avvertenza: CommScope declina eventuali responsabilità derivanti dall'esecuzione di procedure di installazione, ispezione, manutenzione e smontaggio improprie o poco sicure.

注意：CommScope 公司申明對於不恰當或不安全的安裝、檢驗、維修或拆卸操作所導致的後果不負責任 何義務和責任  
© June, 2018 CommScope

**Customer Service 24 hours**  
North America: +1-800-255-1479 (toll free)  
Any country: +1-779-435-6500  
email: acicustomersupportcenter@commscope.com





# Installation Instructions

COMMSCOPE®

ValuLine® DualBand Antennas  
Installation Instructions

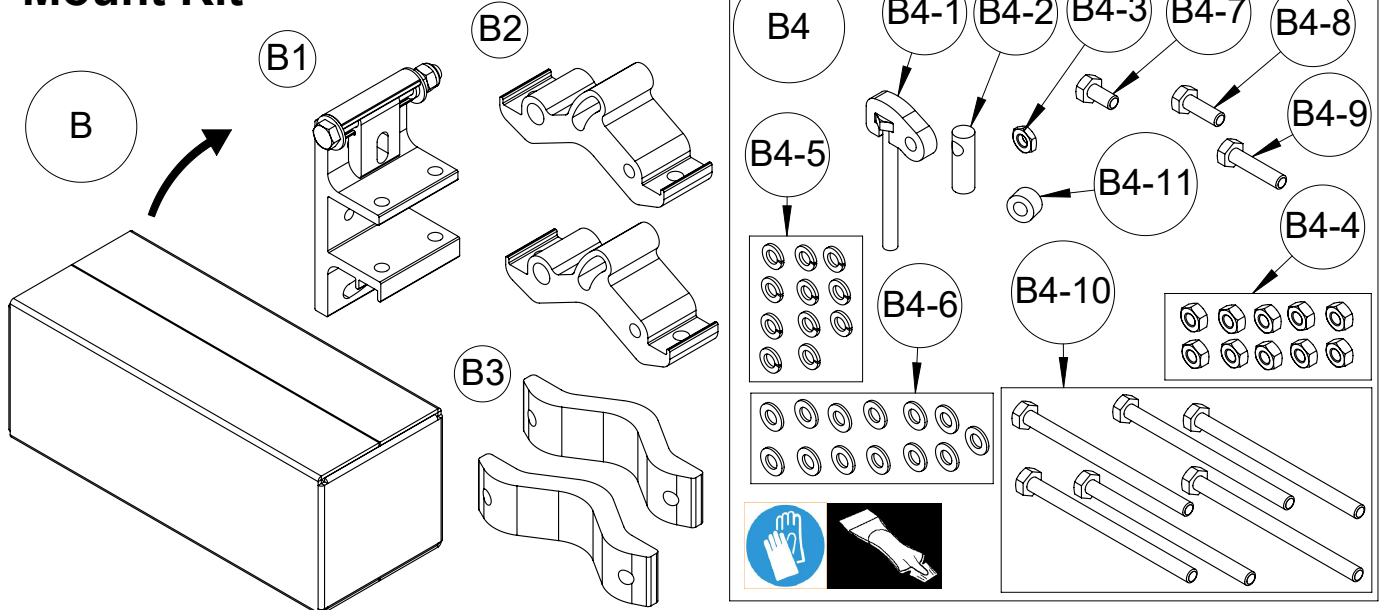


Bulletin 7836888 page 8 of 24

Version 04 StatusRE Rev E

Model Version 00 StatusRE Rev K

## Mount Kit



Sub ASSY	Lower Level	Qty	Description
<b>B</b>			Mount Kit
	<b>B1</b>	1	Elevation Adjuster Assembly
	<b>B2</b>	2	Pipe clamp
	<b>B3</b>	2	V Clamp Bracket
	<b>B4</b>	1	Mount Hardware Kit
	<b>B4-1</b>	1	Azimuth Adjuster Assembly
	<b>B4-2</b>	1	Adjuster Boss
	<b>B4-3</b>	1	M10 Thin Hex Nut, SST, Pass
	<b>B4-4</b>	10	M10 Hex Nut, SST, Pass
	<b>B4-5</b>	11	M10 Split Washer, SST, Pass
	<b>B4-6</b>	13	M10 Flat Washer, SST, Pass
	<b>B4-7</b>	1	M10X20 Hex Screw, SST, Pass
	<b>B4-8</b>	1	M10X30 Hex Screw, SST, Pass
	<b>B4-9</b>	1	M10X45 Hex Screw, SST, Pass
	<b>B4-10</b>	6	M10X150 Hex Screw, SST, Pass
		1	Grease (Tube)
		1	Finger Sheath
	<b>B4-11</b>	1	Spacer

**CommScope**  
1100 CommScope Place SE P.O. Box 339, Hickory, NC 28603-0339  
(828) 324-2200 (800) 982-1708  
www.commscope.com

Notice: CommScope disclaims any liability or responsibility for the results of improper or unsafe installation, inspection, maintenance, or removal practices.  
Aviso: CommScope no acepta ninguna obligación ni responsabilidad como resultado de prácticas incorrectas o peligrosas de instalación, inspección, mantenimiento o retiro. Avis : CommScope décline toute responsabilité pour les conséquences de procédures d'installation, d'inspection, d'entretien ou de retrait incorrectes ou dangereuses. Hinweis: CommScope lehnt jede Haftung oder Verantwortung für Schäden ab, die aufgrund unsachgemäßer Installation, Überprüfung, Wartung oder Demontage auftreten.

Atenção: A CommScope abdica do direito de toda responsabilidade pelos resultados de práticas inadequadas e sem segurança de instalação, inspeção, manutenção ou remoção. Avvertenza: CommScope declina eventuali responsabilità derivanti dall'esecuzione di procedure di installazione, ispezione, manutenzione e smontaggio improprie o poco sicure.

注意: CommScope 公司申明對於不恰當或不安全的安裝、檢驗、維修或拆卸操作所導致的後果不負任何義務和責任  
© June, 2018 CommScope

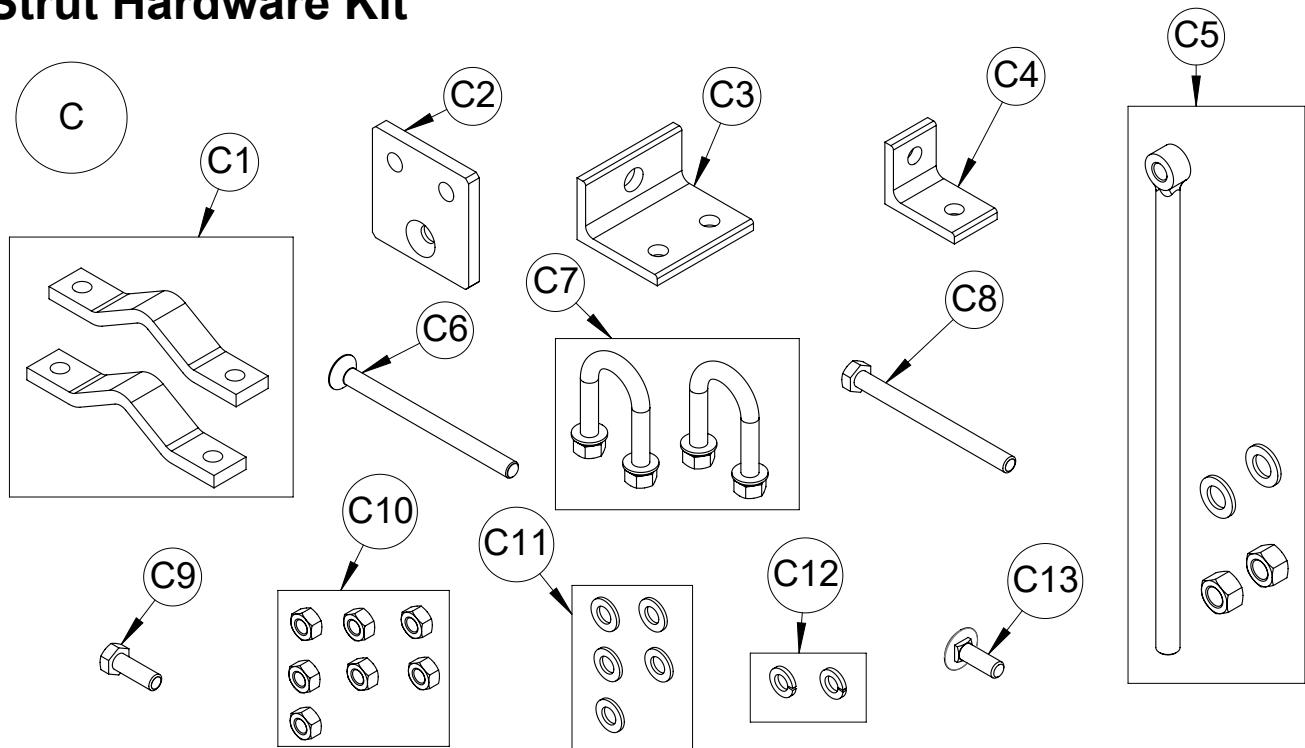
**Customer Service 24 hours**  
North America: +1-800-255-1479 (toll free)  
Any country: +1-779-435-6500  
email: acicustomersupportcenter@commscope.com







## Strut Hardware Kit



Sub ASSY	Item	Qty	Description
C			Strut Kit (stl, galv)
	C1	2	Clamp Bracket
	C2	1	Anchor Plate
	C3	1	Adjuster Bracket
	C4	1	Angle Bracket
	C5	1	M16 Adjuster Eye Bolt c/w 2 nuts and 2 washers
	C6	1	M12 x 160 Countersunk Screw
	C7	2	U-Bolt, M12 c/w 2 Nuts, 2 lock washers and 2 flat Washers
	C8	1	M12 x 140 Hex hd Screw
	C9	1	M12 x 35 Hex hd Screw
	C10	7	M12 Nut
	C11	5	M12 Flat Washer
	C12	2	M12 Lock Washer
	C13	1	M12 x 35 Carriage Bolt

**CommScope**  
1100 CommScope Place SE P.O. Box 339, Hickory, NC 28603-0339  
(828) 324-2200 (800) 982-1708  
www.commscope.com

Notice: CommScope disclaims any liability or responsibility for the results of improper or unsafe installation, inspection, maintenance, or removal practices.  
Aviso: CommScope no acepta ninguna obligación ni responsabilidad como resultado de prácticas incorrectas o peligrosas de instalación, inspección, mantenimiento o retiro. Avis : CommScope décline toute responsabilité pour les conséquences de procédures d'installation, d'inspection, d'entretien ou de retrait incorrectes ou dangereuses. Hinweis: CommScope lehnt jede Haftung oder Verantwortung für Schäden ab, die aufgrund unsachgemäßer Installation, Überprüfung, Wartung oder Demontage auftreten.

Atenção: A CommScope abdica do direito de toda responsabilidade pelos resultados de práticas inadequadas e sem segurança de instalação, inspeção, manutenção ou remoção. Avvertenza: CommScope declina eventuali responsabilità derivanti dall'esecuzione di procedure di installazione, ispezione, manutenzione e smontaggio improprie o poco sicure.

注意: CommScope 公司申明對於不恰當或不安全的安裝、檢驗、維修或拆卸操作所導致的後果不負任何義務和責任  
© June, 2018 CommScope

**Customer Service 24 hours**  
North America: +1-800-255-1479 (toll free)  
Any country: +1-779-435-6500  
email: acicustomersupportcenter@commscope.com





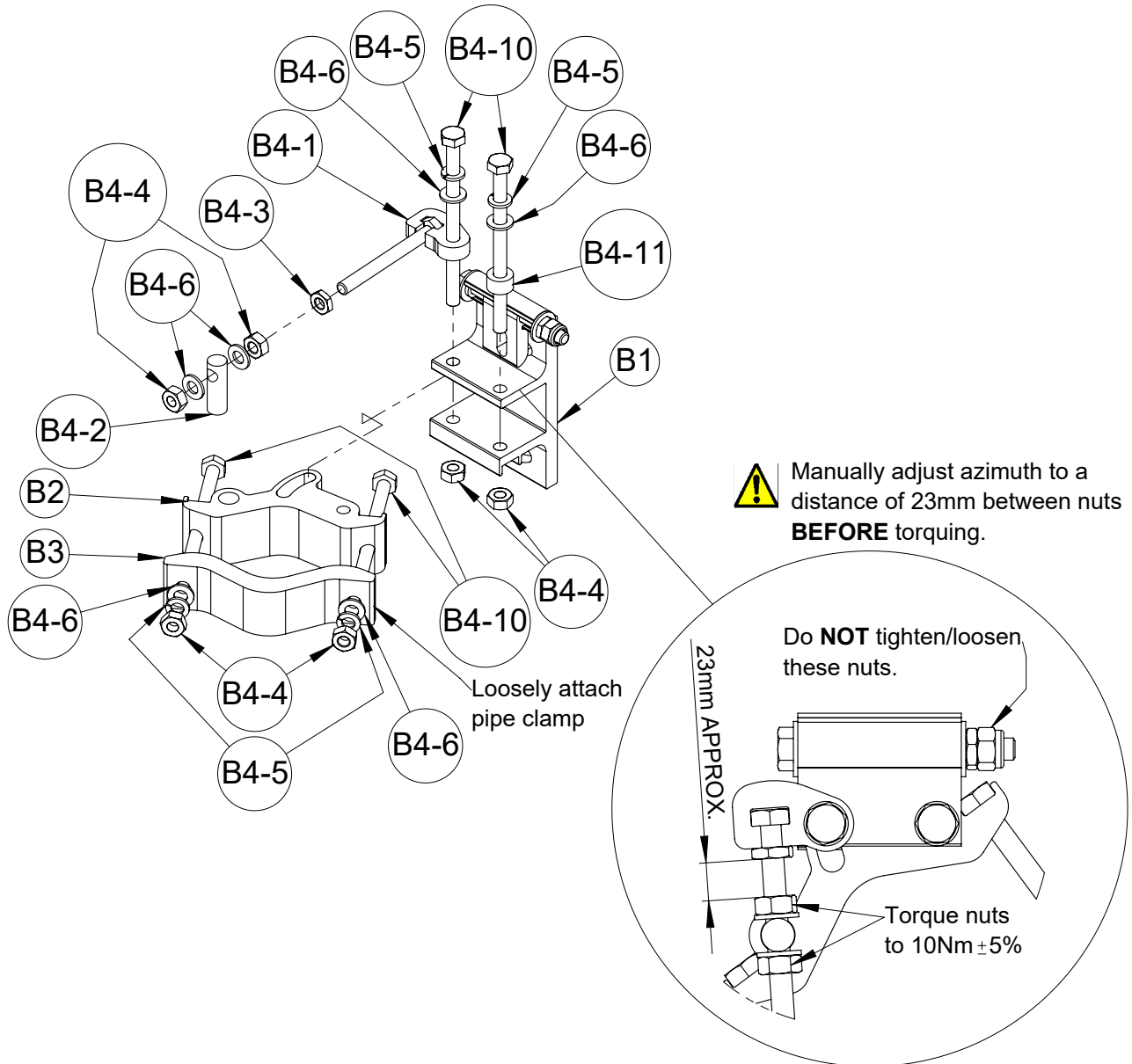
## 1a Mount Assembly

Assemble mount to antenna at ground level prior to attachment to tower.



Apply grease to all threads prior to assembly, use finger sheath provided.

Pre-assemble antenna mount as shown. Finger tighten all hardware unless otherwise specified.



CommScope  
1100 CommScope Place SE P.O. Box 339, Hickory, NC 28603-0339  
(828) 324-2200 (800) 982-1708  
www.commscope.com

Notice: CommScope disclaims any liability or responsibility for the results of improper or unsafe installation, inspection, maintenance, or removal practices.  
Aviso: CommScope no acepta ninguna obligación ni responsabilidad como resultado de prácticas incorrectas o peligrosas de instalación, inspección, mantenimiento o retiro. Avis : CommScope décline toute responsabilité pour les conséquences de procédures d'installation, d'inspection, d'entretien ou de retrait incorrectes ou dangereuses. Hinweis: CommScope lehnt jede Haftung oder Verantwortung für Schäden ab, die aufgrund unsachgemäßer Installation, Überprüfung, Wartung oder Demontage auftreten.  
Atenção: A CommScope abdica do direito de toda responsabilidade pelos resultados de práticas inadequadas e sem segurança de instalação, inspeção, manutenção ou remoção. Avvertenza: CommScope declina eventuali responsabilità derivanti dall'esecuzione di procedure di installazione, ispezione, manutenzione e smontaggio improprie o poco sicure.

注意: CommScope 公司申明對於不恰當或不安全的安裝、檢驗、維修或拆卸操作所導致的後果不負責任 何義務和責任  
© June, 2018 CommScope

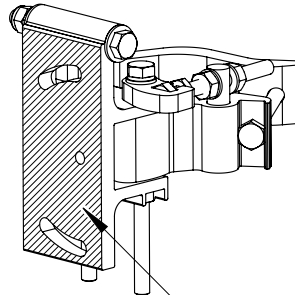
Customer Service 24 hours  
North America: +1-800-255-1479 (toll free)  
Any country: +1-779-435-6500  
email: acicustomersupportcenter@commscope.com






## 1b Attach Mount to Antenna

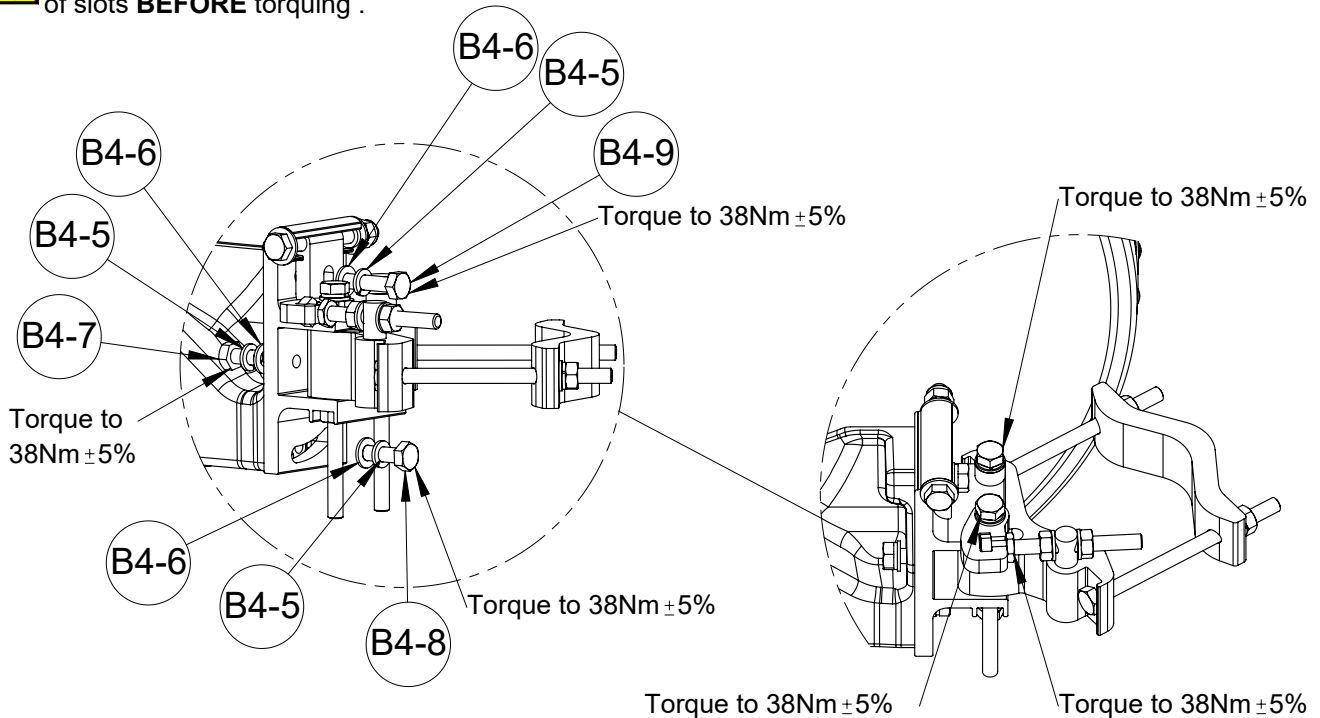
Apply grease to all threads prior to assembly, use finger sheath provided.



Apply grease to surface shown,  
use finger sheath provided.



 Manually adjust elevation to center  
of slots **BEFORE** torquing .



CommScope  
1100 CommScope Place SE P.O. Box 339, Hickory, NC 28603-0339  
(828) 324-2200 (800) 982-1708  
www.commscope.com

Notice: CommScope disclaims any liability or responsibility for the results of improper or unsafe installation, inspection, maintenance, or removal practices.  
Aviso: CommScope no acepta ninguna obligación ni responsabilidad como resultado de prácticas incorrectas o peligrosas de instalación, inspección, mantenimiento o retiro. Avis : CommScope décline toute responsabilité pour les conséquences de procédures d'installation, d'inspection, d'entretien ou de retrait incorrectes ou dangereuses. Hinweis: CommScope lehnt jede Haftung oder Verantwortung für Schäden ab, die aufgrund unsachgemäßer Installation, Überprüfung, Wartung oder Demontage auftreten.  
Atenção: A CommScope abdica do direito de toda responsabilidade pelos resultados de práticas inadequadas e sem segurança de instalação, inspeção, manutenção ou remoção. Avvertenza: CommScope declina eventuali responsabilità derivanti dall'esecuzione di procedure di installazione, ispezione, manutenzione e smontaggio improprie o poco sicure.

注意：CommScope 公司申明對於不恰當或不安全的安裝、檢驗、維修或拆卸操作所導致的後果不負任何義務和責任  
© June, 2018 CommScope

Customer Service 24 hours  
North America: +1-800-255-1479 (toll free)  
Any country: +1-779-435-6500  
email: acicustomersupportcenter@commscope.com

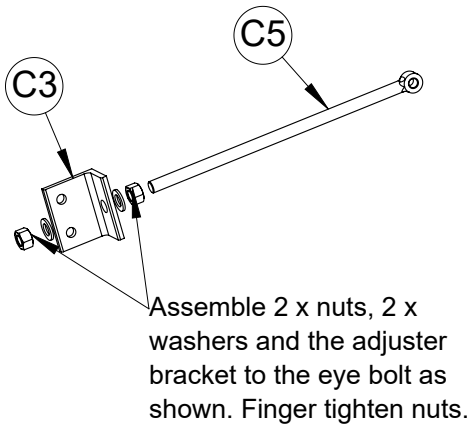




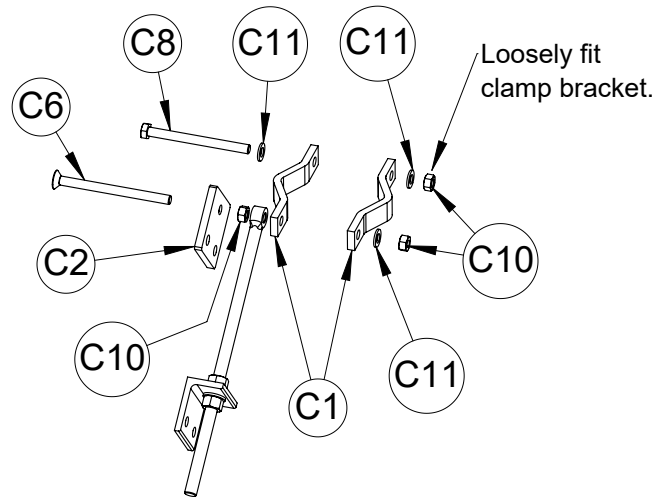
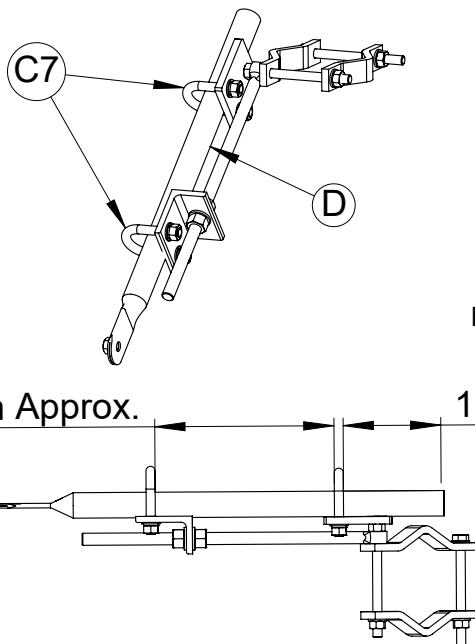
## 2 Strut Assembly

Pre-assemble Strut at ground level prior to attachment to tower.

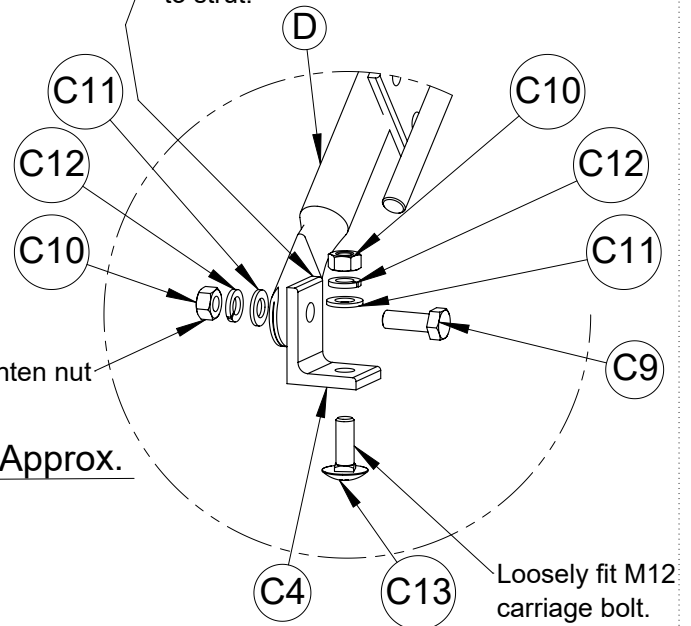
Do **NOT** grease hardware.



Assemble strut to clamp bracket using 2 off U-Bolts to approx. dimensions shown. Torque U-Bolts to 38Nm  $\pm$  5%.



Assemble angle bracket to strut as shown. Ensure longer side of bracket is assembled to strut.



**CommScope**  
1100 CommScope Place SE P.O. Box 339, Hickory, NC 28603-0339  
(828) 324-2200 (800) 982-1708  
www.commscope.com

Notice: CommScope disclaims any liability or responsibility for the results of improper or unsafe installation, inspection, maintenance, or removal practices.  
Aviso: CommScope no acepta ninguna obligación ni responsabilidad como resultado de prácticas incorrectas o peligrosas de instalación, inspección, mantenimiento o retiro. Avis : CommScope décline toute responsabilité pour les conséquences de procédures d'installation, d'inspection, d'entretien ou de retrait incorrectes ou dangereuses. Hinweis: CommScope lehnt jede Haftung oder Verantwortung für Schäden ab, die aufgrund unsachgemäßer Installation, Überprüfung, Wartung oder Demontage auftreten.  
Atenção: A CommScope abdica do direito de toda responsabilidade pelos resultados de práticas inadequadas e sem segurança de instalação, inspeção, manutenção ou remoção. Avvertenza: CommScope declina eventuali responsabilità derivanti dall'esecuzione di procedure di installazione, ispezione, manutenzione e smontaggio improprie o poco sicure.

注意：CommScope 公司申明對於不恰當或不安全的安裝、檢驗、維修或拆卸操作所導致的後果不負責任 何義務和責任  
© June, 2018 CommScope

**Customer Service 24 hours**  
North America: +1-800-255-1479 (toll free)  
Any country: +1-779-435-6500  
email: acicustomersupportcenter@commscope.com





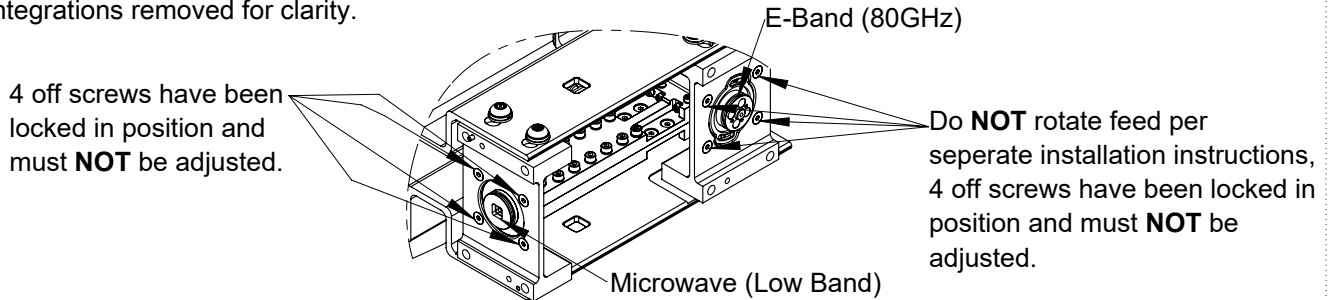
## 3 Integration Assembly and Alignment

Assemble integration kits to the frame in accordance with installation instructions provided with the relevant integration kit.

Unless stated otherwise, the instructions here overrule the ones in the integration kit.

Additional installation requirements for low band and 80GHz ports are shown.

Integrations removed for clarity.



### 3a Microwave (Low Band) Interface Attachment

#### i. Dual Polarized Integration Kit (OMT, part number VINTX-DET) only

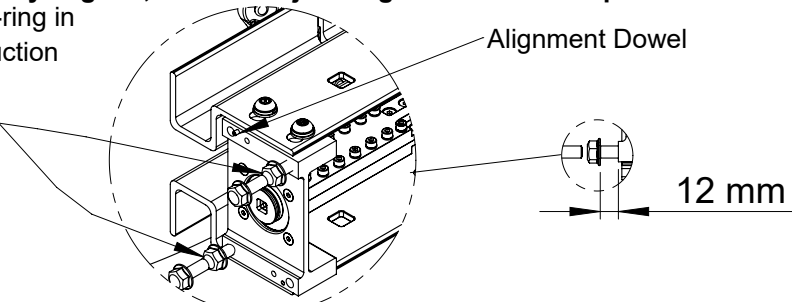


#### IMPORTANT NOTE

**Low Band OMT MUST be vertically aligned, do NOT adjust alignment from this position.**

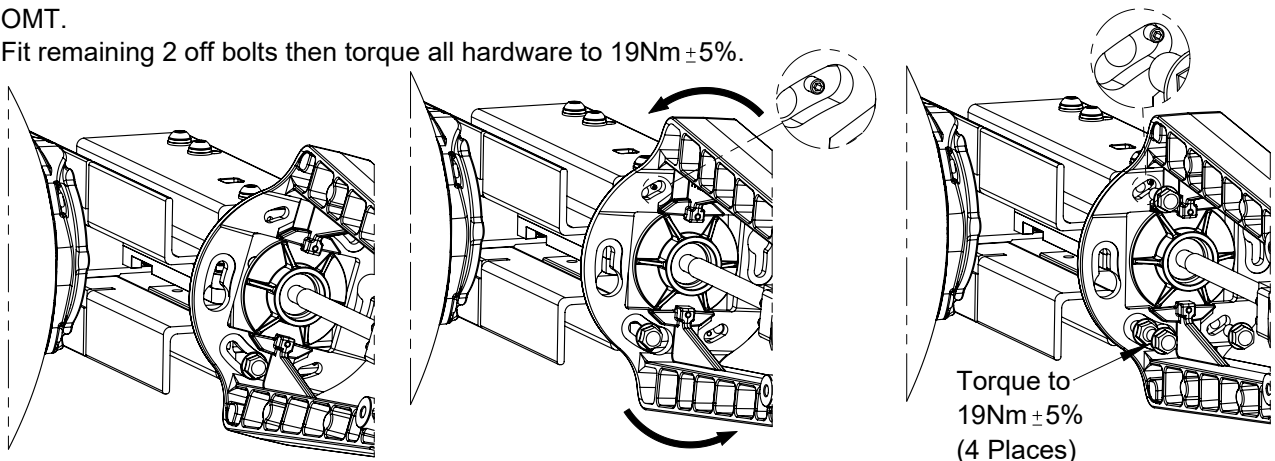
Remove protective tape and fit O-ring in accordance with installation instruction provided with the integration kit.

Assemble 2-off M8 bolts provided with dual polarized integration kit, in positions shown, leaving 12mm of thread showing.



Place OMT over bolt heads as shown and rotate anti-clockwise until alignment dowel makes contact with OMT.

Fit remaining 2 off bolts then torque all hardware to 19Nm ±5%.

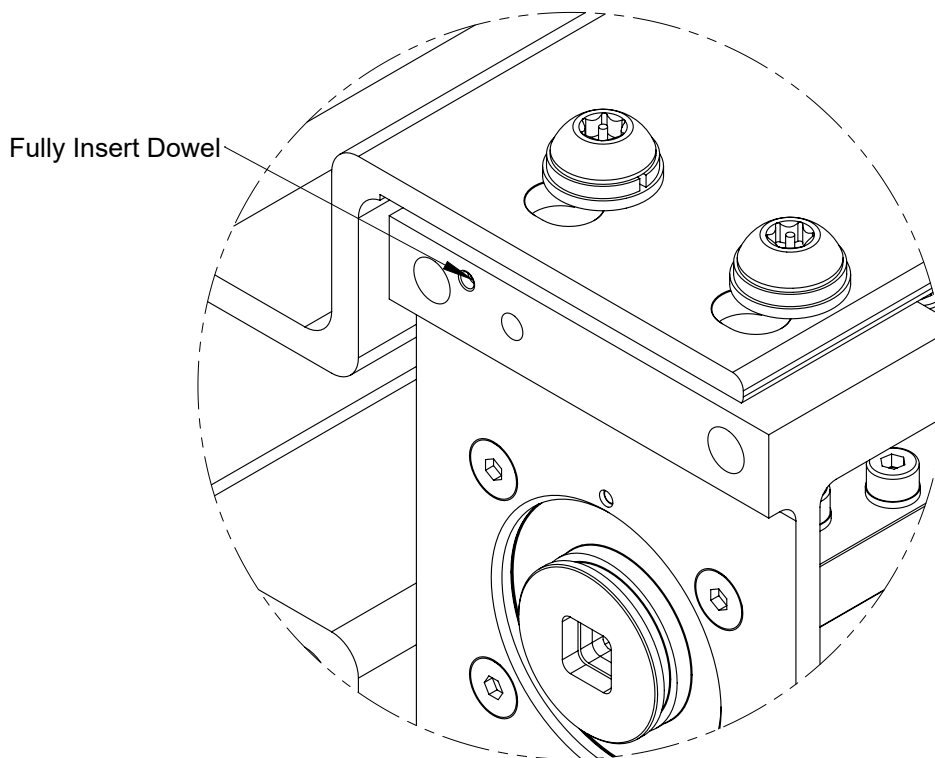




## ii. Single Polarized Integration Kit (Part number VINT-DET) only

 **IMPORTANT NOTE: For Low Band single polarized applications, alignment dowel must be below surface level before assembly of VINT kit.**

Fit integration kit in accordance with installation instructions provided with the integration kit.



**CommScope**  
1100 CommScope Place SE P.O. Box 339, Hickory, NC 28603-0339  
(828) 324-2200 (800) 982-1708  
www.commscope.com

Notice: CommScope disclaims any liability or responsibility for the results of improper or unsafe installation, inspection, maintenance, or removal practices.  
Aviso: CommScope no acepta ninguna obligación ni responsabilidad como resultado de prácticas incorrectas o peligrosas de instalación, inspección, mantenimiento o retiro. Avis : CommScope décline toute responsabilité pour les conséquences de procédures d'installation, d'inspection, d'entretien ou de retrait incorrectes ou dangereuses. Hinweis: CommScope lehnt jede Haftung oder Verantwortung für Schäden ab, die aufgrund unsachgemäßer Installation, Überprüfung, Wartung oder Demontage auftreten.  
Atenção: A CommScope abdica do direito de toda responsabilidade pelos resultados de práticas inadequadas e sem segurança de instalação, inspeção, manutenção ou remoção. Avvertenza: CommScope declina eventuali responsabilità derivanti dall'esecuzione di procedure di installazione, ispezione, manutenzione e smontaggio improprie o poco sicure.

注意: CommScope 公司申明對於不恰當或不安全的安裝、檢驗、維修或拆卸操作所導致的後果不負任何義務和責任  
© June, 2018 CommScope

**Customer Service 24 hours**  
North America: +1-800-255-1479 (toll free)  
Any country: +1-779-435-6500  
email: acicustomersupportcenter@commscope.com





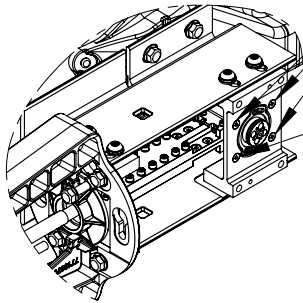


## 3b E-Band (80GHz) Interface Attachment

### i. Dual Polarized Integration Kit (OMT, Part number VINTX-80-DET) only

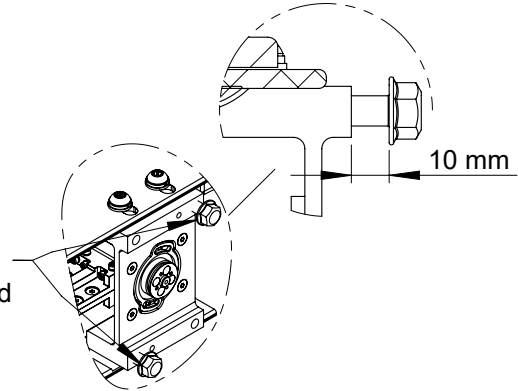
Remove protective cover and fit O-ring in accordance with installation instruction provided with the integration kit.

Integrations removed for clarity



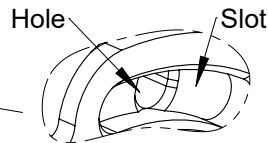
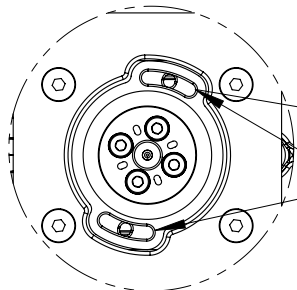
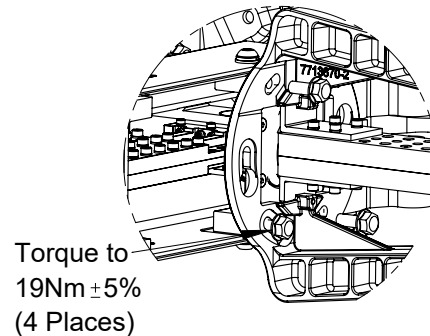
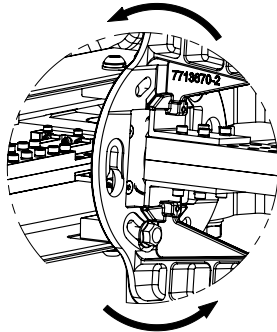
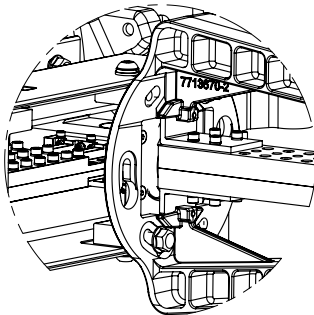
Do **NOT** rotate feed per separate installation instructions, 4 off screws have been locked in position and must **NOT** be adjusted.

Assemble 2-off M8 bolts provided with dual polarized integration kit, in positions shown, leaving 10mm of thread showing.

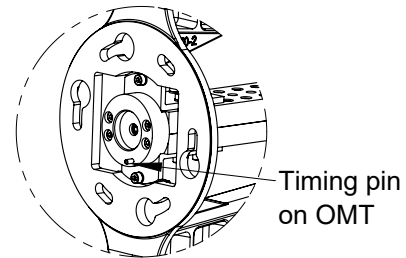


Ensuring timing pin has been located correctly in slot, push OMT kit unit over bolt heads as shown then rotate anti clockwise until timing pin is seated into hole.

Fit remaining 2 off bolts then torque hardware to 19Nm ±5%.



When installing 80GHz OMT ensure timing pin runs along slot as the OMT is being rotated.



### ii. Single Polarized Integration Kit (VINT-80-DET) only

Follow installation instructions provided with integration kits.

CommScope  
1100 CommScope Place SE P.O. Box 339, Hickory, NC 28603-0339  
(828) 324-2200 (800) 982-1708  
www.commscope.com

Notice: CommScope disclaims any liability or responsibility for the results of improper or unsafe installation, inspection, maintenance, or removal practices.  
Aviso: CommScope no acepta ninguna obligación ni responsabilidad como resultado de prácticas incorrectas o peligrosas de instalación, inspección, mantenimiento o retiro. Avis : CommScope décline toute responsabilité pour les conséquences de procédures d'installation, d'inspection, d'entretien ou de retrait incorrectes ou dangereuses. Hinweis: CommScope lehnt jede Haftung oder Verantwortung für Schäden ab, die aufgrund unsachgemäßer Installation, Überprüfung, Wartung oder Demontage auftreten.

Atenção: A CommScope abdica do direito de toda responsabilidade pelos resultados de práticas inadequadas e sem segurança de instalação, inspeção, manutenção ou remoção. Avvertenza: CommScope declina eventuali responsabilità derivanti dall'esecuzione di procedure di installazione, ispezione, manutenzione e smontaggio improprie o poco sicure.

注意: CommScope 公司申明對於不恰當或不安全的安裝、檢驗、維修或拆卸操作所導致的後果不負責任。何義務和責任  
© June, 2018 CommScope

Customer Service 24 hours  
North America: +1-800-255-1479 (toll free)  
Any country: +1-779-435-6500  
email: acicustomersupportcenter@commscope.com



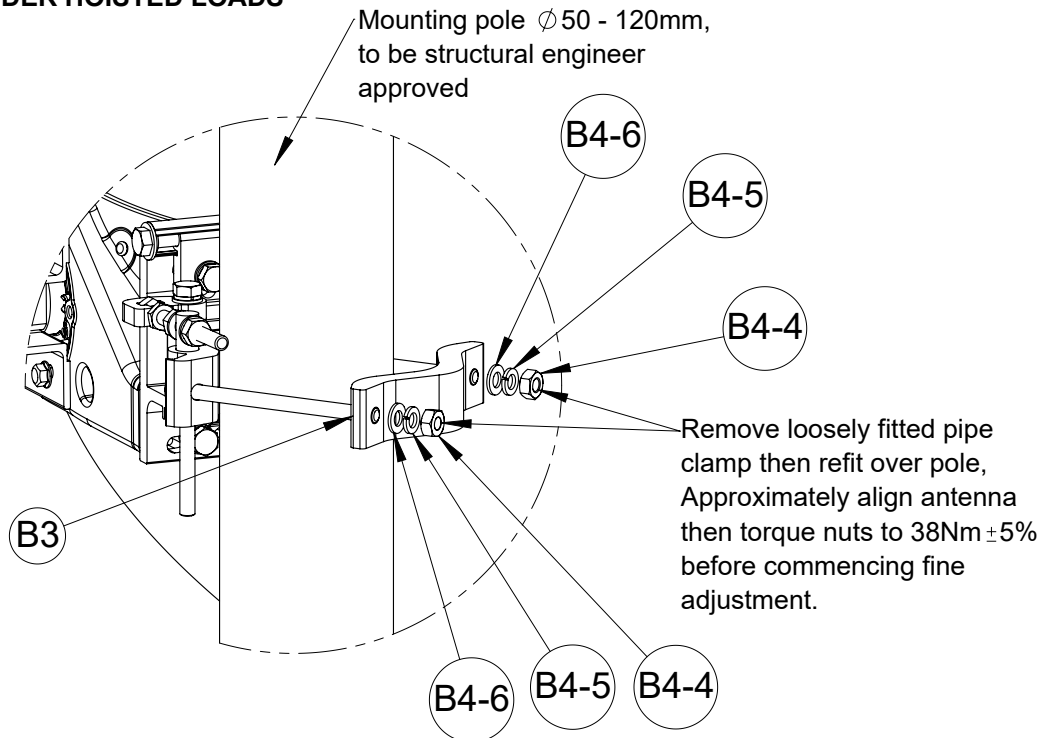




## 4a Antenna Mounting and Alignment

Mount antenna on tower.  
Secure mount to pole as shown.

**NEVER WALK UNDER HOISTED LOADS**



Use Low-band link signal to approximately align the antenna in elevation and azimuth, then use 80GHz signal to finally align. (Step 4b and 4c).  
Adjust polarization using a spirit level.

**CommScope**  
1100 CommScope Place SE P.O. Box 339, Hickory, NC 28603-0339  
(828) 324-2200 (800) 982-1708  
www.commscope.com

Notice: CommScope disclaims any liability or responsibility for the results of improper or unsafe installation, inspection, maintenance, or removal practices.  
Aviso: CommScope no acepta ninguna obligación ni responsabilidad como resultado de prácticas incorrectas o peligrosas de instalación, inspección, mantenimiento o retiro. Avis : CommScope décline toute responsabilité pour les conséquences de procédures d'installation, d'inspection, d'entretien ou de retrait incorrectes ou dangereuses. Hinweis: CommScope lehnt jede Haftung oder Verantwortung für Schäden ab, die aufgrund unsachgemäßer Installation, Überprüfung, Wartung oder Demontage auftreten.  
Atenção: A CommScope abdica do direito de toda responsabilidade pelos resultados de práticas inadequadas e sem segurança de instalação, inspeção, manutenção ou remoção. Avvertenza: CommScope declina eventuali responsabilità derivanti dall'esecuzione di procedure di installazione, ispezione, manutenzione e smontaggio improprie o poco sicure.

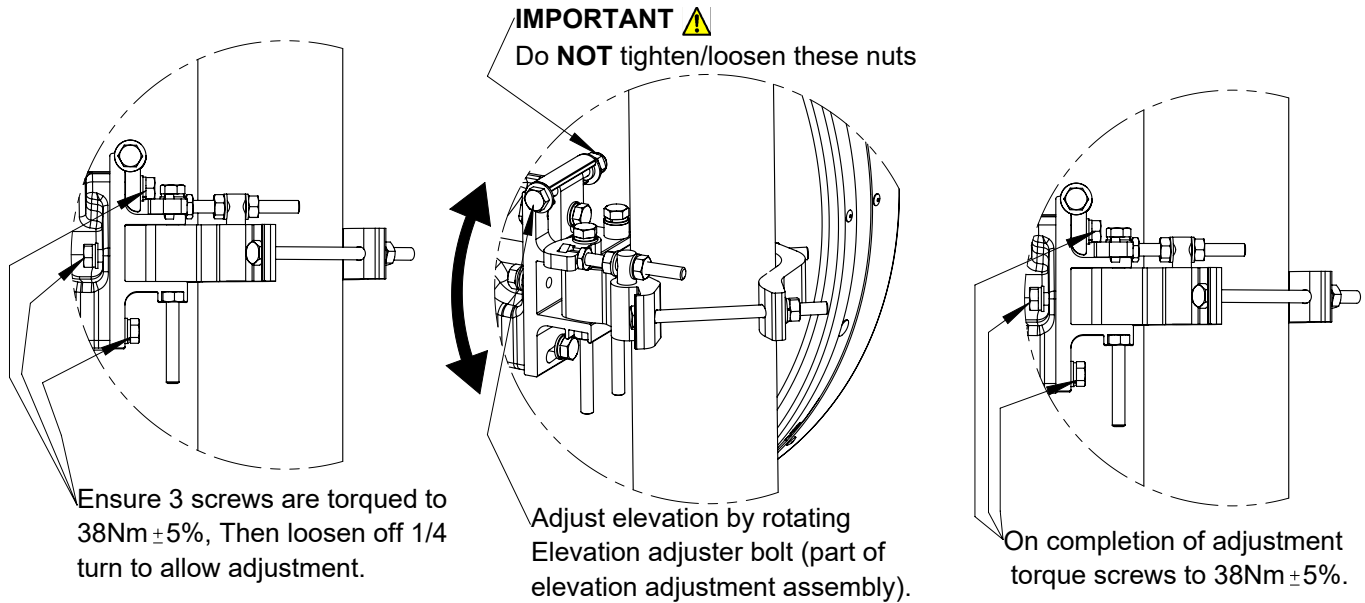
注意: CommScope 公司申明對於不恰當或不安全的安裝、檢驗、維修或拆卸操作所導致的後果不負任何義務和責任  
© June, 2018 CommScope

**Customer Service 24 hours**  
North America: +1-800-255-1479 (toll free)  
Any country: +1-779-435-6500  
email: acicustomersupportcenter@commscope.com

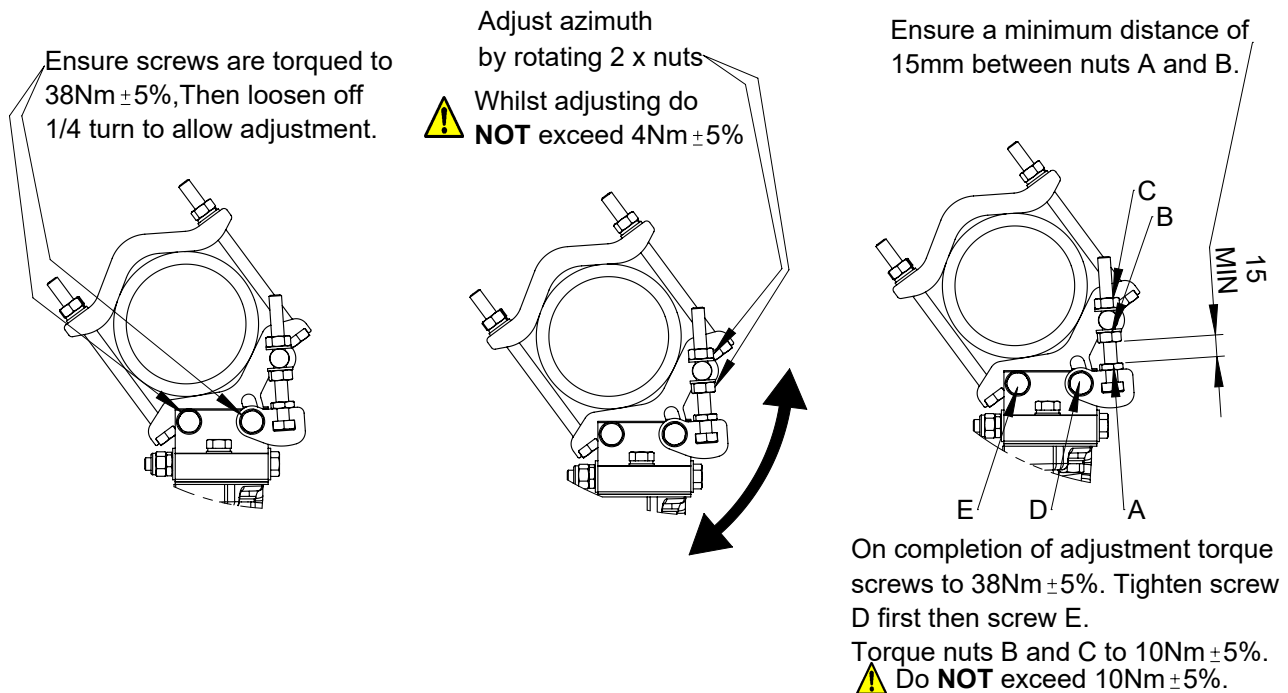




## 4b Elevation Adjustment



## 4c Azimuth Adjustment



**CommScope**  
1100 CommScope Place SE P.O. Box 339, Hickory, NC 28603-0339  
(828) 324-2200 (800) 982-1708  
www.commscope.com

Notice: CommScope disclaims any liability or responsibility for the results of improper or unsafe installation, inspection, maintenance, or removal practices.  
Aviso: CommScope no acepta ninguna obligación ni responsabilidad como resultado de prácticas incorrectas o peligrosas de instalación, inspección, mantenimiento o retiro. Avis : CommScope décline toute responsabilité pour les conséquences de procédures d'installation, d'inspection, d'entretien ou de retrait incorrectes ou dangereuses. Hinweis: CommScope lehnt jede Haftung oder Verantwortung für Schäden ab, die aufgrund unsachgemäßer Installation, Überprüfung, Wartung oder Demontage auftreten.  
Atenção: A CommScope abdica do direito de toda responsabilidade pelos resultados de práticas inadequadas e sem segurança de instalação, inspeção, manutenção ou remoção. Avvertenza: CommScope declina eventuali responsabilità derivanti dall'esecuzione di procedure di installazione, ispezione, manutenzione e smontaggio improprie o poco sicure.

注意: CommScope 公司申明對於不恰當或不安全的安裝、檢驗、維修或拆卸操作所導致的後果不負責任 何義務和責任  
© June, 2018 CommScope

**Customer Service 24 hours**  
North America: +1-800-255-1479 (toll free)  
Any country: +1-779-435-6500  
email: acicustomersupportcenter@commscope.com



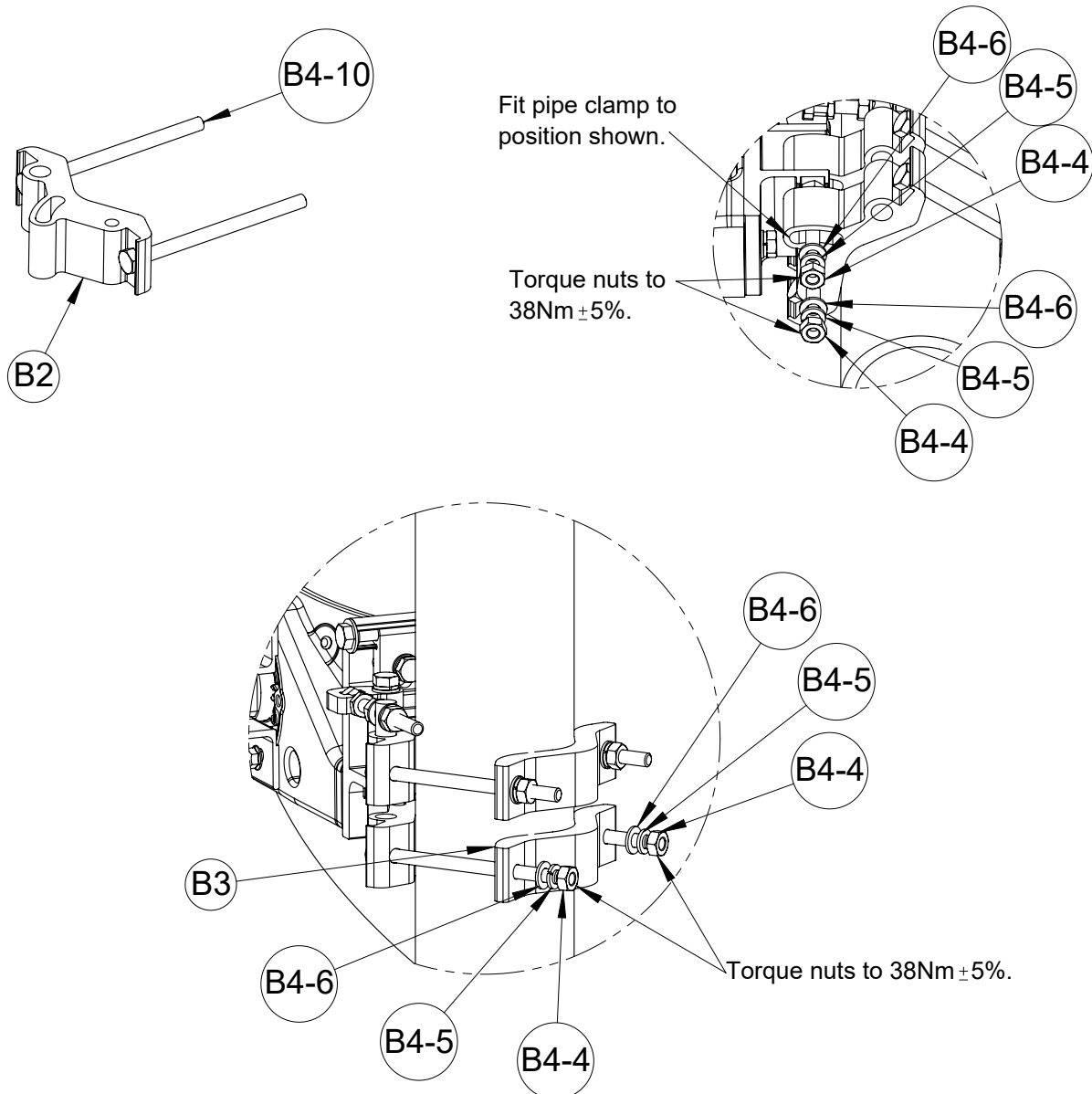


## 4d Support Clamp Installation



Apply grease to all threads prior to assembly, use finger sheath provided.

Ensure mount has been adjusted correctly with previous pages **before** assembling second pipe clamp. If assembled incorrectly there is a potential risk of clash.



CommScope  
1100 CommScope Place SE P.O. Box 339, Hickory, NC 28603-0339  
(828) 324-2200 (800) 982-1708  
www.commscope.com

Notice: CommScope disclaims any liability or responsibility for the results of improper or unsafe installation, inspection, maintenance, or removal practices.  
Aviso: CommScope no acepta ninguna obligación ni responsabilidad como resultado de prácticas incorrectas o peligrosas de instalación, inspección, mantenimiento o retiro. Avis : CommScope décline toute responsabilité pour les conséquences de procédures d'installation, d'inspection, d'entretien ou de retrait incorrectes ou dangereuses. Hinweis: CommScope lehnt jede Haftung oder Verantwortung für Schäden ab, die aufgrund unsachgemäßer Installation, Überprüfung, Wartung oder Demontage auftreten.  
Atenção: A CommScope abdica do direito de toda responsabilidade pelos resultados de práticas inadequadas e sem segurança de instalação, inspeção, manutenção ou remoção. Avvertenza: CommScope declina eventuali responsabilità derivanti dall'esecuzione di procedure di installazione, ispezione, manutenzione e smontaggio improprie o poco sicure.

注意: CommScope 公司申明對於不恰當或不安全的安裝、檢驗、維修或拆卸操作所導致的後果不負責任 何義務和責任  
© June, 2018 CommScope

Customer Service 24 hours  
North America: +1-800-255-1479 (toll free)  
Any country: +1-779-435-6500  
email: acicustomersupportcenter@commscope.com



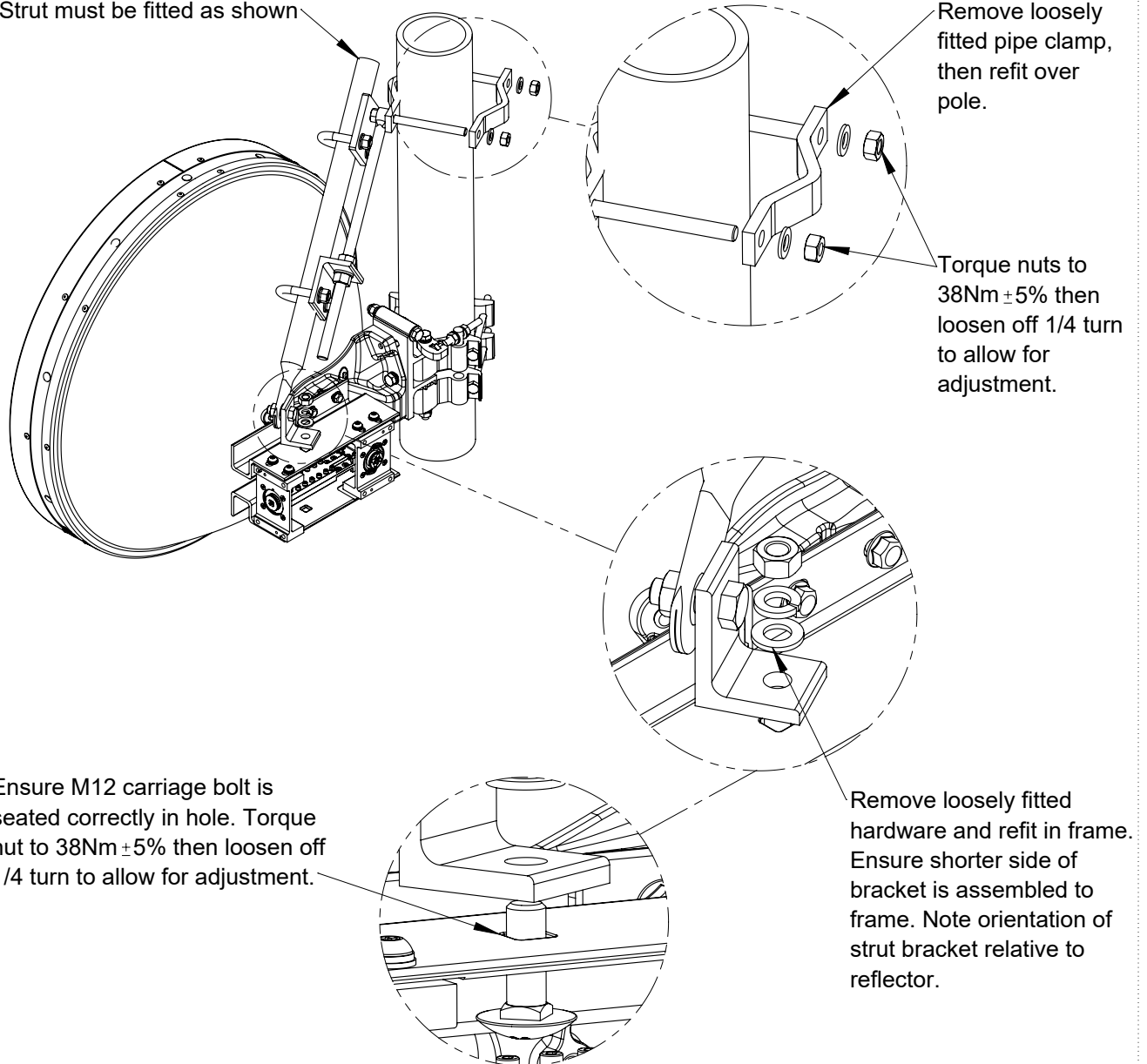


## 5 Strut Attachment

Assemble Strut to antenna.

Do **NOT** grease hardware

Strut must be fitted as shown



Remove loosely fitted pipe clamp, then refit over pole.

Torque nuts to 38Nm  $\pm$ 5% then loosen off 1/4 turn to allow for adjustment.

Ensure M12 carriage bolt is seated correctly in hole. Torque nut to 38Nm  $\pm$ 5% then loosen off 1/4 turn to allow for adjustment.

Remove loosely fitted hardware and refit in frame. Ensure shorter side of bracket is assembled to frame. Note orientation of strut bracket relative to reflector.

### CommScope

1100 CommScope Place SE P.O. Box 339, Hickory, NC 28603-0339  
(828) 324-2200 (800) 982-1708  
www.commscope.com

Notice: CommScope disclaims any liability or responsibility for the results of improper or unsafe installation, inspection, maintenance, or removal practices.

Aviso: CommScope no acepta ninguna obligación ni responsabilidad como resultado de prácticas incorrectas o peligrosas de instalación, inspección, mantenimiento o retiro. Avis: CommScope décline toute responsabilité pour les conséquences de procédures d'installation, d'inspection, d'entretien ou de retrait incorrectes ou dangereuses. Hinweis: CommScope lehnt jede Haftung oder Verantwortung für Schäden ab, die aufgrund unsachgemäßer Installation, Überprüfung, Wartung oder Demontage auftreten.

Atenção: A CommScope abdica do direito de toda responsabilidade pelos resultados de práticas inadequadas e sem segurança de instalação, inspeção, manutenção ou remoção. Avvertenza: CommScope declina eventuali responsabilità derivanti dall'esecuzione di procedure di installazione, ispezione, manutenzione e smontaggio improprie o poco sicure.

注意: CommScope 公司申明對於不恰當或不安全的安裝、檢驗、維修或拆卸操作所導致的后果不負責任 何義務和責任

© June, 2018 CommScope

### Customer Service 24 hours

North America: +1-800-255-1479 (toll free)

Any country: +1-779-435-6500

email: acicustomersupportcenter@commscope.com

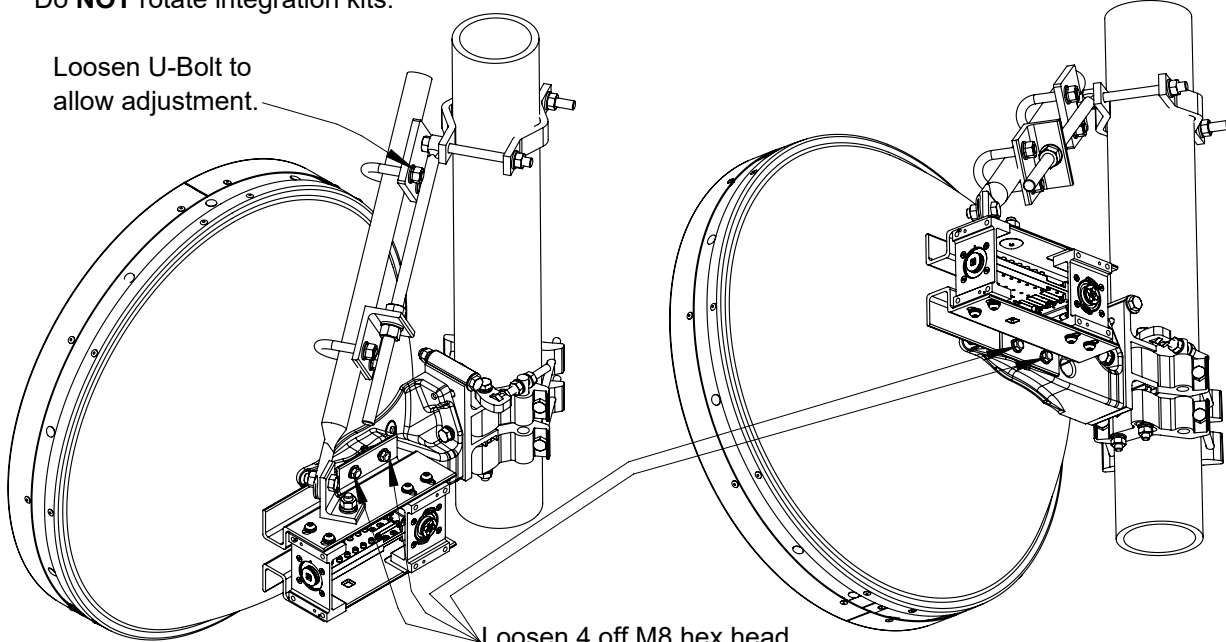




## 6a Polarization Adjustment

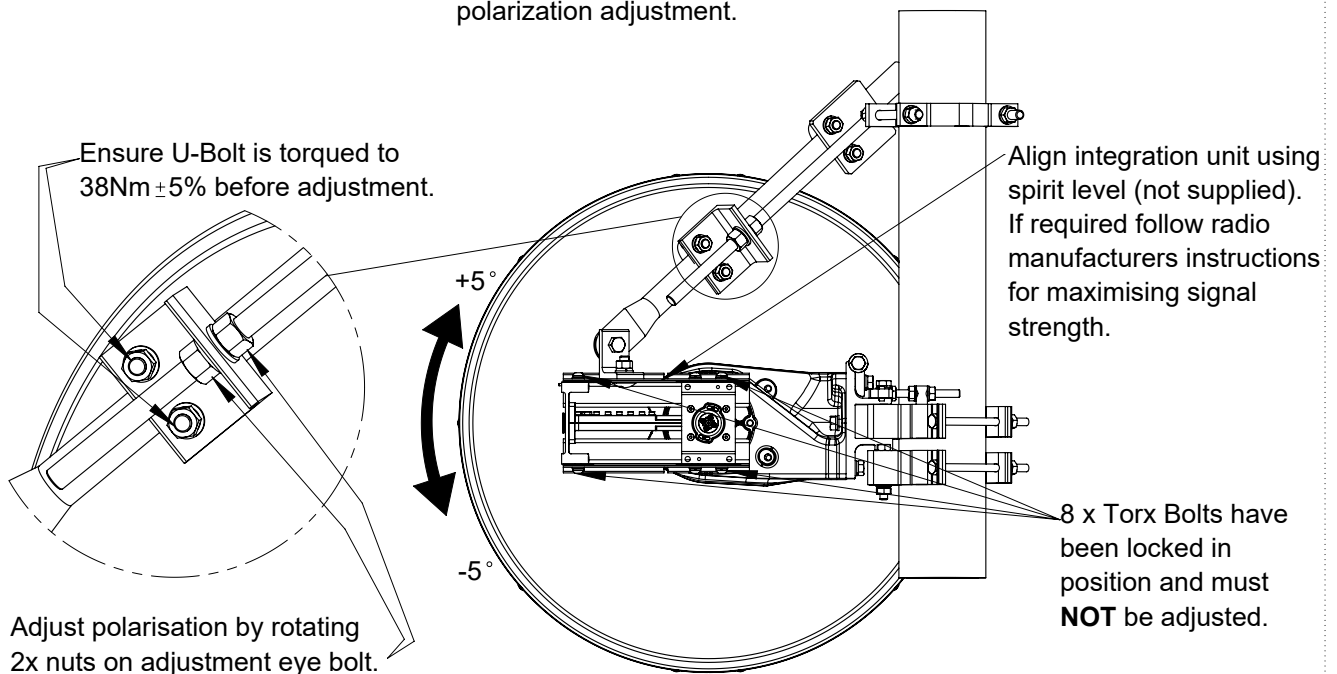
Do **NOT** rotate integration kits.

Loosen U-Bolt to allow adjustment.



Loosen 4 off M8 hex head screws 1/4 turn to allow polarization adjustment.

Ensure U-Bolt is torqued to  $38\text{Nm} \pm 5\%$  before adjustment.



Align integration unit using spirit level (not supplied). If required follow radio manufacturers instructions for maximising signal strength.

8 x Torx Bolts have been locked in position and must **NOT** be adjusted.

Adjust polarisation by rotating 2x nuts on adjustment eye bolt.

**CommScope**  
1100 CommScope Place SE P.O. Box 339, Hickory, NC 28603-0339  
(828) 324-2200 (800) 982-1708  
www.commscope.com

Notice: CommScope disclaims any liability or responsibility for the results of improper or unsafe installation, inspection, maintenance, or removal practices.  
Aviso: CommScope no acepta ninguna obligación ni responsabilidad como resultado de prácticas incorrectas o peligrosas de instalación, inspección, mantenimiento o retiro. Avis : CommScope décline toute responsabilité pour les conséquences de procédures d'installation, d'inspection, d'entretien ou de retrait incorrectes ou dangereuses. Hinweis: CommScope lehnt jede Haftung oder Verantwortung für Schäden ab, die aufgrund unsachgemäßer Installation, Überprüfung, Wartung oder Demontage auftreten.  
Atenção: A CommScope abdica do direito de toda responsabilidade pelos resultados de práticas inadequadas e sem segurança de instalação, inspeção, manutenção ou remoção. Avvertenza: CommScope declina eventuali responsabilità derivanti dall'esecuzione di procedure di installazione, ispezione, manutenzione e smontaggio improprie o poco sicure.

注意: CommScope 公司申明對於不恰當或不安全的安裝、檢驗、維修或拆卸操作所導致的後果不負責任 何義務和責任  
© June, 2018 CommScope

**Customer Service 24 hours**  
North America: +1-800-255-1479 (toll free)  
Any country: +1-779-435-6500  
email: acicustomersupportcenter@commscope.com



# Installation Instructions

COMMSCOPE®

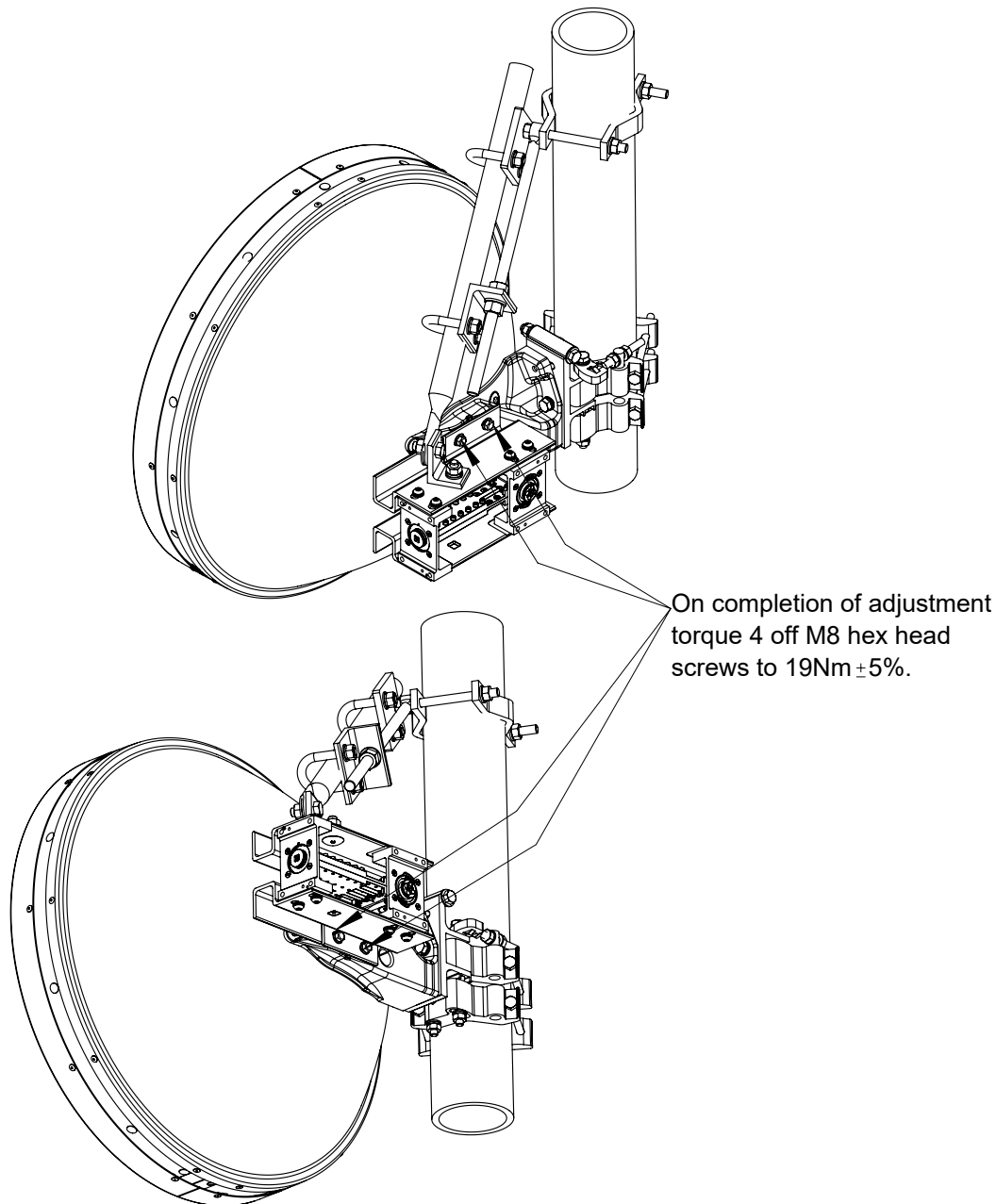
## ValuLine® DualBand Antennas Installation Instructions



Bulletin 7836888 page 21 of 24

Version 04 Status RE Rev E

Model Version 00 Status RE Rev K



**CommScope**  
1100 CommScope Place SE P.O. Box 339, Hickory, NC 28603-0339  
(828) 324-2200 (800) 982-1708  
www.commscope.com

Notice: CommScope disclaims any liability or responsibility for the results of improper or unsafe installation, inspection, maintenance, or removal practices.  
Aviso: CommScope no acepta ninguna obligación ni responsabilidad como resultado de prácticas incorrectas o peligrosas de instalación, inspección, mantenimiento o retiro. Avis : CommScope décline toute responsabilité pour les conséquences de procédures d'installation, d'inspection, d'entretien ou de retrait incorrectes ou dangereuses. Hinweis: CommScope lehnt jede Haftung oder Verantwortung für Schäden ab, die aufgrund unsachgemäßer Installation, Überprüfung, Wartung oder Demontage auftreten.  
Atenção: A CommScope abdica do direito de toda responsabilidade pelos resultados de práticas inadequadas e sem segurança de instalação, inspeção, manutenção ou remoção. Avvertenza: CommScope declina eventuali responsabilità derivanti dall'esecuzione di procedure di installazione, ispezione, manutenzione e smontaggio improprie o poco sicure.

注意: CommScope 公司申明對於不恰當或不安全的安裝、檢驗、維修或拆卸操作所導致的後果不負任何義務和責任  
© June, 2018 CommScope

**Customer Service 24 hours**  
North America: +1-800-255-1479 (toll free)  
Any country: +1-779-435-6500  
email: acicustomersupportcenter@commscope.com

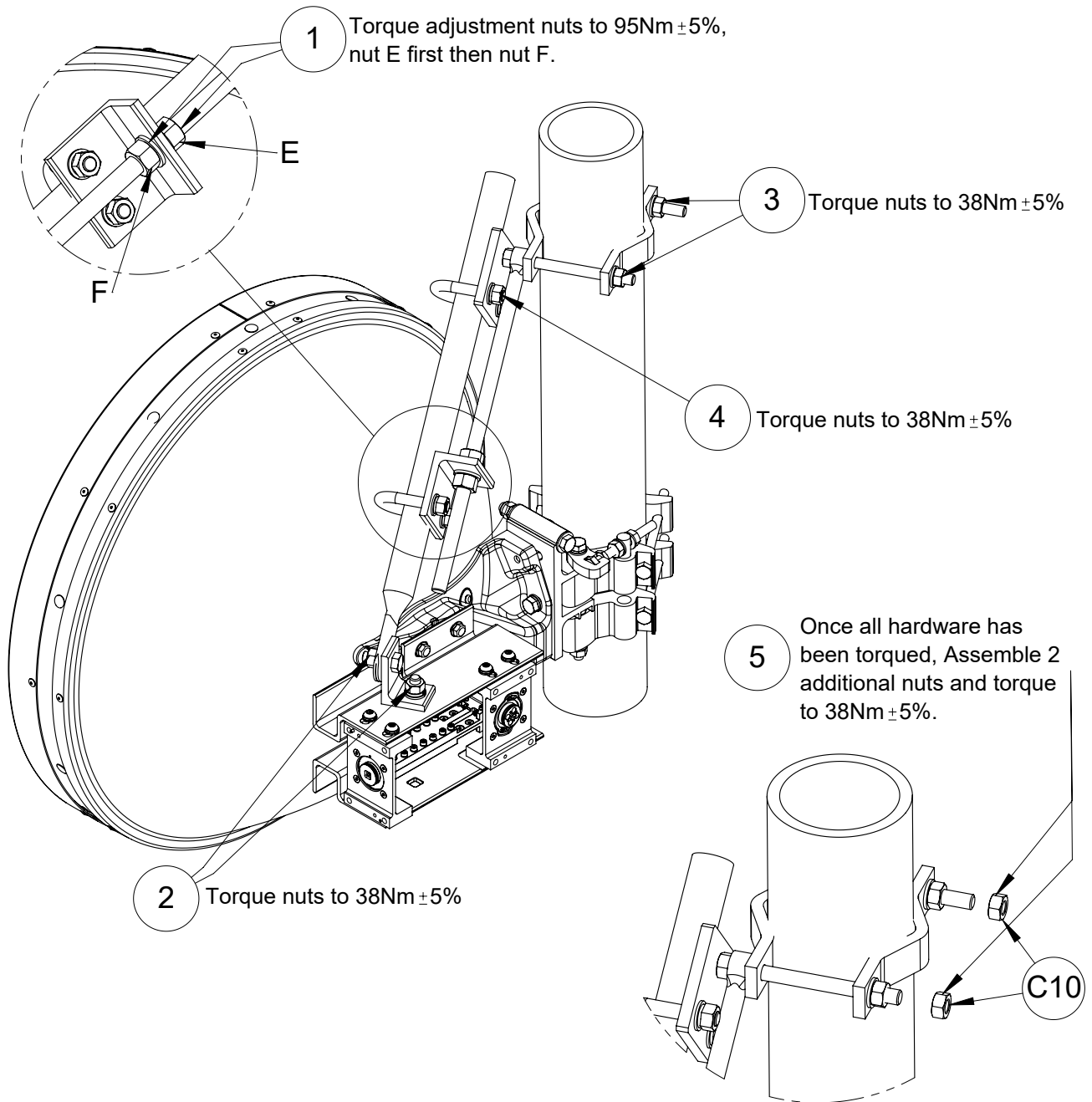






## 6b Strut Attachment Completion

Once alignment is complete tighten all fixings to torque specified per sequence below.



**CommScope**  
1100 CommScope Place SE P.O. Box 339, Hickory, NC 28603-0339  
(828) 324-2200 (800) 982-1708  
www.commscope.com

Notice: CommScope disclaims any liability or responsibility for the results of improper or unsafe installation, inspection, maintenance, or removal practices.  
Aviso: CommScope no acepta ninguna obligación ni responsabilidad como resultado de prácticas incorrectas o peligrosas de instalación, inspección, mantenimiento o retiro. Avis : CommScope décline toute responsabilité pour les conséquences de procédures d'installation, d'inspection, d'entretien ou de retrait incorrectes ou dangereuses. Hinweis: CommScope lehnt jede Haftung oder Verantwortung für Schäden ab, die aufgrund unsachgemäßer Installation, Überprüfung, Wartung oder Demontage auftreten.  
Atenção: A CommScope abdica do direito de toda responsabilidade pelos resultados de práticas inadequadas e sem segurança de instalação, inspeção, manutenção ou remoção. Avvertenza: CommScope declina eventuali responsabilità derivanti dall'esecuzione di procedure di installazione, ispezione, manutenzione e smontaggio improprie o poco sicure.

注意: CommScope 公司申明對於不恰當或不安全的安裝、檢驗、維修或拆卸操作所導致的後果不負責任 何義務和責任  
© June, 2018 CommScope

**Customer Service 24 hours**  
North America: +1-800-255-1479 (toll free)  
Any country: +1-779-435-6500  
email: [accustomersupportcenter@commscope.com](mailto:accustomersupportcenter@commscope.com)





# Installation Instructions

COMMSCOPE®

## ValuLine® DualBand Antennas Installation Instructions



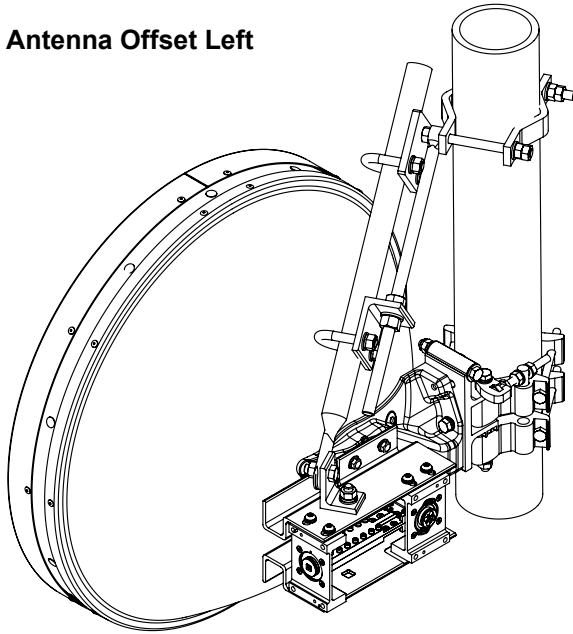
Bulletin 7836888 page 23 of 24

Version 04 Status RE Rev E

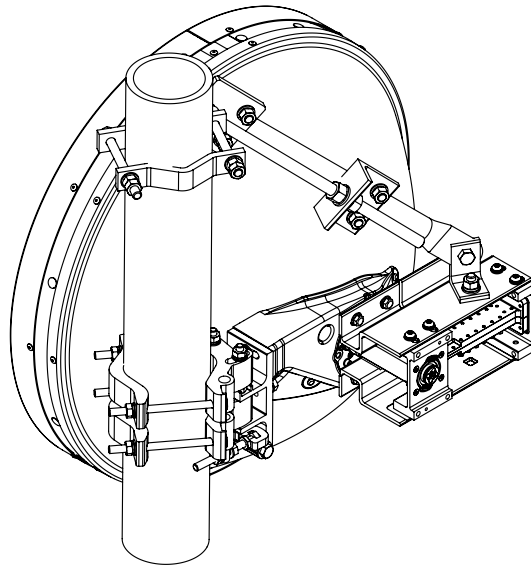
Model Version 00 Status RE Rev K

Fit radio per instructions.  
Integrations removed for clarity.

**Antenna Offset Left**



**Antenna Offset Right**



**CommScope**  
1100 CommScope Place SE P.O. Box 339, Hickory, NC 28603-0339  
(828) 324-2200 (800) 982-1708  
www.commscope.com

Notice: CommScope disclaims any liability or responsibility for the results of improper or unsafe installation, inspection, maintenance, or removal practices.  
Aviso: CommScope no acepta ninguna obligación ni responsabilidad como resultado de prácticas incorrectas o peligrosas de instalación, inspección, mantenimiento o retiro. Avis : CommScope décline toute responsabilité pour les conséquences de procédures d'installation, d'inspection, d'entretien ou de retrait incorrectes ou dangereuses. Hinweis: CommScope lehnt jede Haftung oder Verantwortung für Schäden ab, die aufgrund unsachgemäßer Installation, Überprüfung, Wartung oder Demontage auftreten.

Atenção: A CommScope abdica do direito de toda responsabilidade pelos resultados de práticas inadequadas e sem segurança de instalação, inspeção, manutenção ou remoção. Avvertenza: CommScope declina eventuali responsabilità derivanti dall'esecuzione di procedure di installazione, ispezione, manutenzione e smontaggio improprie o poco sicure.

注意: CommScope 公司申明對於不恰當或不安全的安裝、檢驗、維修或拆卸操作所導致的后果不負任何義務和責任  
© June, 2018 CommScope

**Customer Service 24 hours**  
North America: +1-800-255-1479 (toll free)  
Any country: +1-779-435-6500  
email: [acustomersupportcenter@commscope.com](mailto:acustomersupportcenter@commscope.com)





## 7 General Information

### 7.1 General maintenance

The antenna is designed such that minimal maintenance is required but regular inspection to verify all hardware is correctly torqued should ensure trouble free operation.

### 7.2 Cleaning of Antenna

If subsequent cleaning of the antenna is required a dilute solution of mild detergent should be used.

**CommScope**  
1100 CommScope Place SE P.O. Box 339, Hickory, NC 28603-0339  
(828) 324-2200 (800) 982-1708  
www.commscope.com

Notice: CommScope disclaims any liability or responsibility for the results of improper or unsafe installation, inspection, maintenance, or removal practices.  
Aviso: CommScope no acepta ninguna obligación ni responsabilidad como resultado de prácticas incorrectas o peligrosas de instalación, inspección, mantenimiento o retiro. Avis : CommScope décline toute responsabilité pour les conséquences de procédures d'installation, d'inspection, d'entretien ou de retrait incorrectes ou dangereuses. Hinweis: CommScope lehnt jede Haftung oder Verantwortung für Schäden ab, die aufgrund unsachgemäßer Installation, Überprüfung, Wartung oder Demontage auftreten.  
Atenção: A CommScope abdica do direito de toda responsabilidade pelos resultados de práticas inadequadas e sem segurança de instalação, inspeção, manutenção ou remoção. Avvertenza: CommScope declina eventuali responsabilità derivanti dall'esecuzione di procedure di installazione, ispezione, manutenzione e smontaggio improprie o poco sicure.

注意: CommScope 公司申明對於不恰當或不安全的安裝、檢驗、維修或拆卸操作所導致的後果不負責任 何義務和責任  
© June, 2018 CommScope

**Customer Service 24 hours**  
North America: +1-800-255-1479 (toll free)  
Any country: +1-779-435-6500  
email: acicustomersupportcenter@commscope.com

