

RR-65A-R2VB



4-port sector antenna, 4x 694–960 MHz, 65° HPBW, 2x RET

- All Internal RET actuators are connected in “Cascaded SRET” configuration
- Uses the 4.3-10 connector which is 40 percent smaller than the 7-16 DIN connector
- Tilt indicator is available

General Specifications

Antenna Type	Sector
Band	Single band
Color	Light Gray (RAL 7035)
Grounding Type	RF connector inner conductor and body grounded to reflector and mounting bracket
Performance Note	Outdoor usage
Radome Material	Fiberglass, UV resistant
Reflector Material	Aluminum
RF Connector Interface	4.3-10 Female
RF Connector Location	Bottom
RF Connector Quantity, low band	4
RF Connector Quantity, total	4

Remote Electrical Tilt (RET) Information

RET Hardware	CommRET v2
RET Interface	8-pin DIN Female 8-pin DIN Male
RET Interface, quantity	1 female 1 male
Input Voltage	10–30 Vdc
Internal RET	Low band (2)
Power Consumption, active state, maximum	10 W
Power Consumption, idle state, maximum	2 W
Protocol	3GPP/AISG 2.0 (Single RET)

Dimensions

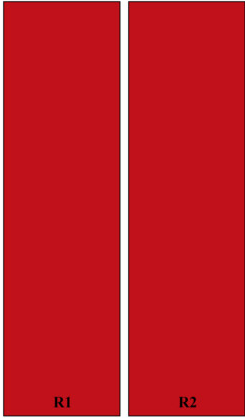
Width	467 mm 18.386 in
Depth	167 mm 6.575 in

RR-65A-R2VB

Length 1497 mm | 58.937 in

Net Weight, antenna only 19 kg | 41.888 lb

Array Layout



Array ID	Frequency (MHz)	RF Connector	HPBW	RET (SRET)	AISG No.	AISG RET UID
R1	694-960	1 - 2	65°	1	AISG1	CPxxxxxxxxxxxxR1
R2	694-960	3 - 4	65°	2	AISG1	CPxxxxxxxxxxxxR2

(Sizes of colored boxes are not true depictions of array sizes)

Port Configuration



Electrical Specifications

Impedance 50 ohm

Operating Frequency Band 694 – 960 MHz

RR-65A-R2VB

Polarization	±45°
Total Input Power, maximum	800 W

Electrical Specifications

Frequency Band, MHz	698–806	790–896	890–960
Beamwidth, Horizontal, degrees	65	66	67
Beamwidth, Vertical, degrees	15	13.5	12.4
Beam Tilt, degrees	2–16	2–16	2–16
USLS (First Lobe), dB	15	17	18
Front-to-Back Ratio at 180°, dB	32	32	32
Front-to-Back Total Power at 180° ± 30°, dB	22	23	22
Isolation, Cross Polarization, dB	25	25	25
Isolation, Inter-band, dB	28	28	28
VSWR Return loss, dB	1.5 14.0	1.5 14.0	1.5 14.0
PIM, 3rd Order, 2 x 20 W, dBc	-153	-153	-153
Input Power per Port, maximum, watts	300	300	300

Electrical Specifications, BASTA

Frequency Band, MHz	698–806	790–896	890–960
Gain by all Beam Tilts, average, dBi	13.9	14.7	14.6
Gain by all Beam Tilts Tolerance, dB	±0.7	±0.3	±0.3
Beamwidth, Horizontal Tolerance, degrees	±5.1	±6.3	±5.3
Beamwidth, Vertical Tolerance, degrees	±1.2	±0.9	±0.8
USLS, beampeak to 20° above beampeak, dB	17	18	18
CPR at Boresight, dB	28	28	25
CPR at Sector, dB	13	9	8

Mechanical Specifications

Wind Loading @ Velocity, frontal	595.0 N @ 150 km/h (133.8 lbf @ 150 km/h)
Wind Loading @ Velocity, lateral	222.0 N @ 150 km/h (49.9 lbf @ 150 km/h)
Wind Loading @ Velocity, rear	735.0 N @ 150 km/h (165.2 lbf @ 150 km/h)
Wind Speed, maximum	241 km/h (150 mph)

Packaging and Weights

Width, packed	562 mm 22.126 in
----------------------	--------------------

RR-65A-R2VB

Depth, packed	287 mm 11.299 in
Length, packed	1697 mm 66.811 in
Weight, gross	28.7 kg 63.273 lb

Regulatory Compliance/Certifications

Agency	Classification
CHINA-ROHS	Below maximum concentration value
ISO 9001:2015	Designed, manufactured and/or distributed under this quality management system
ROHS	Compliant
UK-ROHS	Compliant



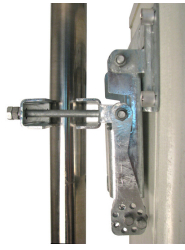
Included Products

- BSAMNT-B95-03 – Wide Profile Antenna Downtilt Mounting Kit for 2.4 - 4.5 in (60 - 115 mm) OD round members. Kit contains one scissor top bracket set and one bottom bracket set.

* Footnotes

Performance Note Severe environmental conditions may degrade optimum performance

BSAMNT-B95-03



Wide Profile Antenna Downtilt Mounting Kit for 2.4 - 4.5 in (60 - 115 mm) OD round members. Kit contains one scissor top bracket set and one bottom bracket set.

Product Classification

Product Type Downtilt mounting kit

General Specifications

Application Outdoor

Color Silver

Dimensions

Compatible Diameter, maximum 114.3 mm | 4.5 in

Compatible Diameter, minimum 61 mm | 2.402 in

Weight, net 4.5 kg | 9.921 lb

Material Specifications

Material Type Galvanized steel

Packaging and Weights

Included Brackets | Hardware

Packaging quantity 2

Regulatory Compliance/Certifications

Agency

CE
ISO 9001:2015

Classification

Compliant with the relevant CE product directives
Designed, manufactured and/or distributed under this quality management system

