



Cable Exchange

Product Portfolio - Brochure

Cable Exchange (CEX) is the quick turn assembly house for all your fiber and copper cable assemblies. We provide a multitude of standard and customized networking solutions utilizing various cable types, connector configurations, color, and length options.

From our beginnings as a family-owned business in 1986, CEX has been providing networking cables to many different enterprise customers. Our strengths are in quick-turn and customization.

Since joining CommScope in 2017, we have expanded these capabilities and have become strategic partner to hyperscale, broadband, and enterprise customers. We have manufacturing facilities on the East and West Coast.

For more information, call us Monday-Friday, 5am-5pm (PST) at (800) 422-2539, or email us at CEXSales@CommScope.com.

SUBJECT TO COMMScope LIMITED PRODUCT WARRANTY: <https://www.commscope.com/globalassets/digizuite/2847-limited-product-warranty.pdf>

Table of Contents

FIBER PATCH
CABLES

p3

DISTRIBUTION
FIBER TRUNKS

p4

SUB-UNITIZED
FIBER TRUNKS

MICRO-CORE
FIBER TRUNKS

p5

COPPER PATCH
CABLES

p6

CUSTOM

p7

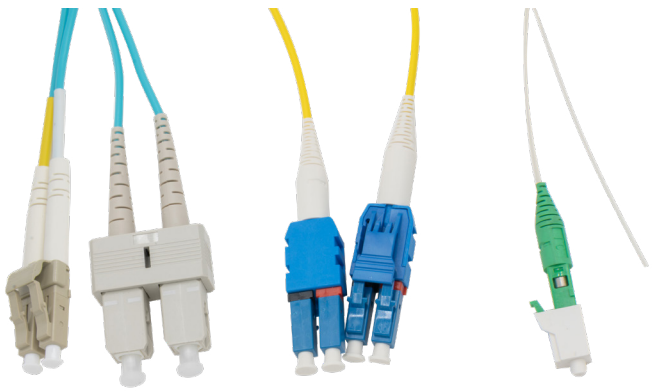
p8

FIBER PATCH CABLES

Fiber Patch Cables

CEX Fiber Patch Cables give you a reliable connection with standard 2.0mm Zip or Round cordage. With a variety of connector options including LC Uniboosts of Field-Reversible Polarity and legacy MTRJ options, this family will fit all your patching needs.

Pictured: CEX-LCSCOM4D-006F, CEX-LULUSMD-006F, CEX-L1XXSMS-006F



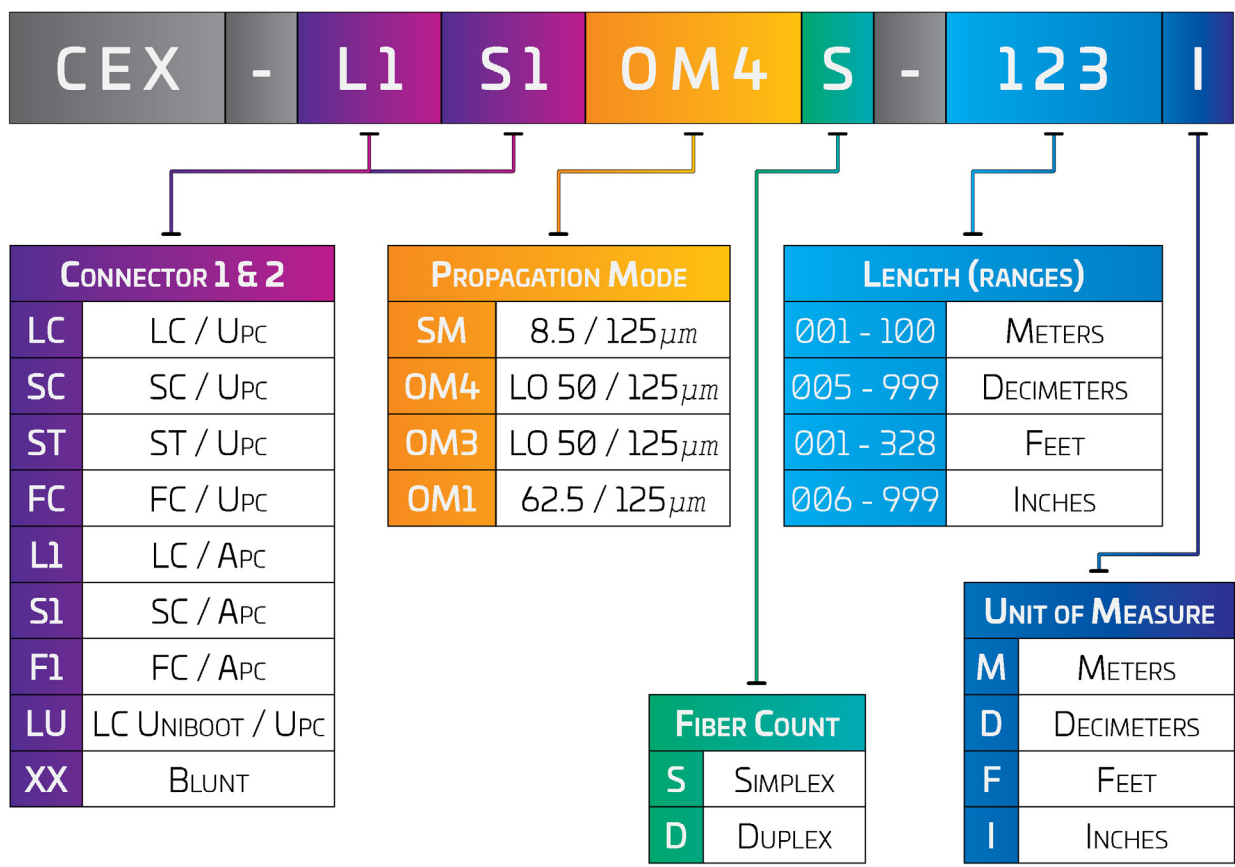
2.0mm RISER-rated (OFNR)

- Simplex (1 Fiber)
- Duplex (2 Fiber Zip | 2 Fiber Round)

TIA-598-C Industry Color Coding Standards

- Yellow (SM)
- Aqua (OM4 | OM3)
- Orange (OM1)

note that 'LENGTH (RANGES)' refers to overall length as measured from connector tips, excluding industry standard tolerances



**SUB-UNITIZED
FIBER TRUNKS**

Pictured: CEXT44S2XPQ1QG012F

Sub-unitized Fiber Trunks

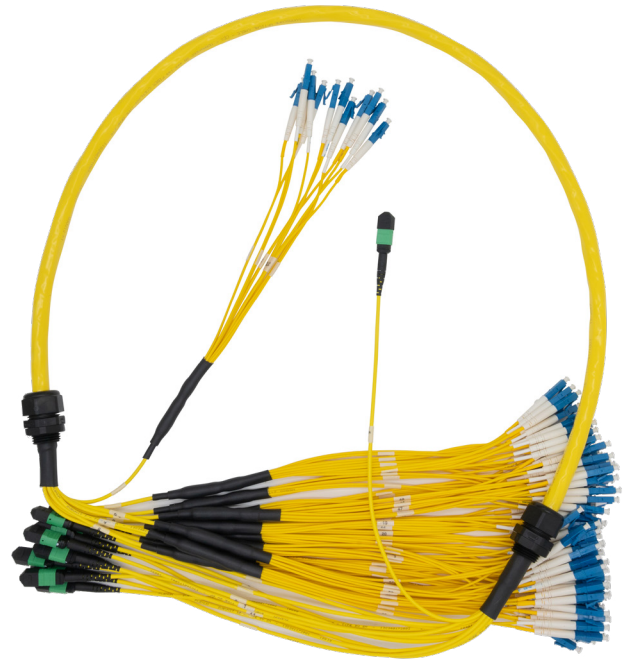
CEX Sub-unitized Fiber Trunks are our top of the line product set. Ranging from 08F up to 144F using the latest 2.0mm Sub-unit diameter, it does not only provide high density with the smallest possible diameter, but also flexibility to double stagger and line up to your rack and panel layout.

Plenum-rated (OFNP/OFCP)

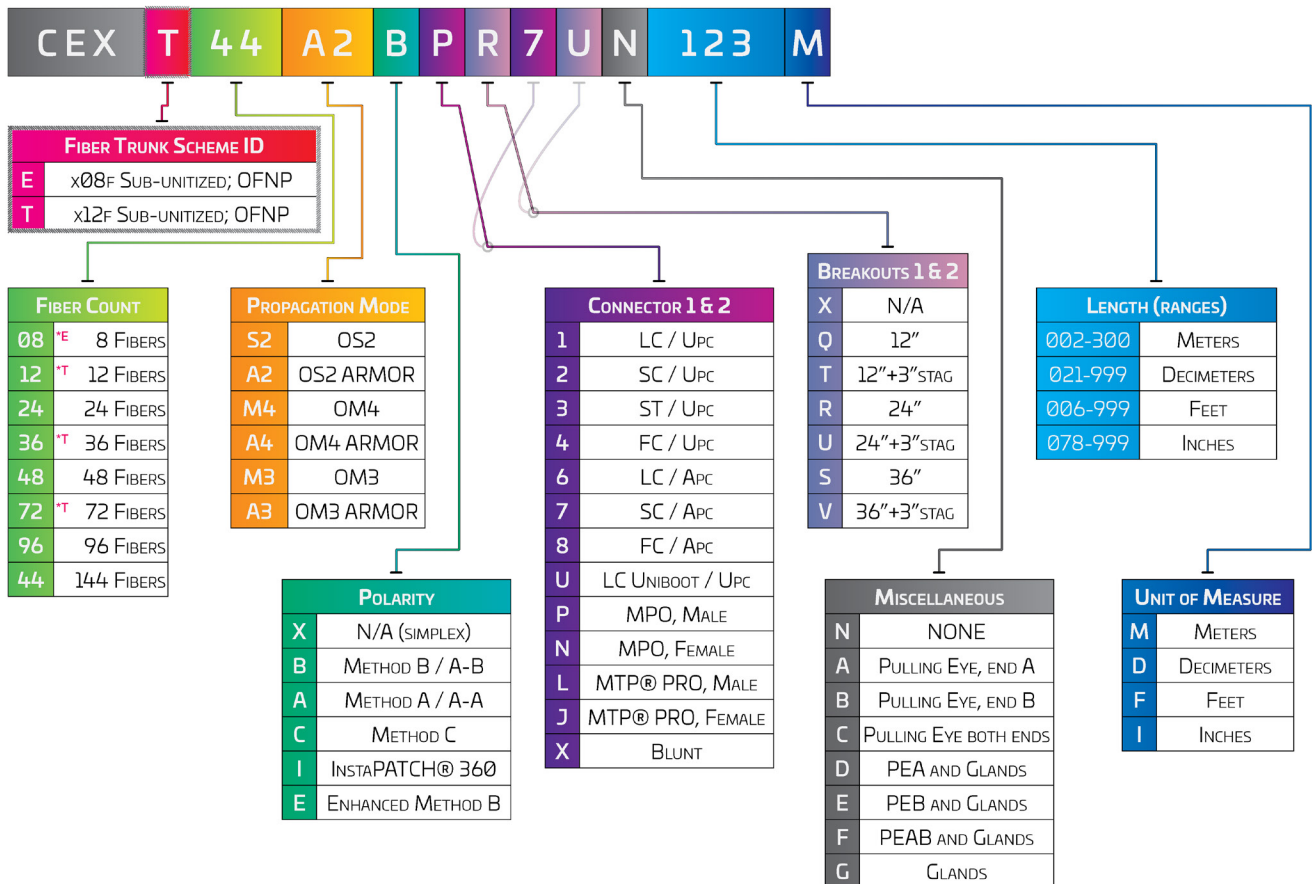
- 250micron; 2.0mm¹ Sub-units: 8 Fiber or 12 Fiber
- LC Uniboosts of Field-Reversible Polarity
- MTP® PROs of Field-Reversible Polarity

TIA-598-C Industry Color Coding Standards

- Yellow (OS2)
- Aqua (OM4 | OM3)
- Colored Breakouts Every 8 or 12 Fibers



note that 'LENGTH (RANGES)' refers to overall length as measured from connector tips, excluding industry standard tolerances

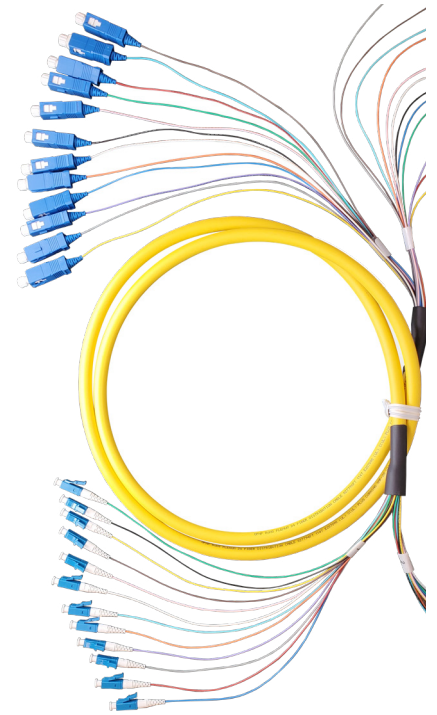


i. subject to availability -- 3.0mm diameter may be used in lieu of 2.0mm sub-units

Pictured: CEXD24S2X2010N012F

Distribution Fiber Trunks

CEX Distribution Fiber Trunks are built around 900micron tight buffer, enabling direct colored fanout and single fiber termination without over-tubing. These trunks are ideal for in-tray / in-box direct patching where 2.0mm furcation creates space constraints.



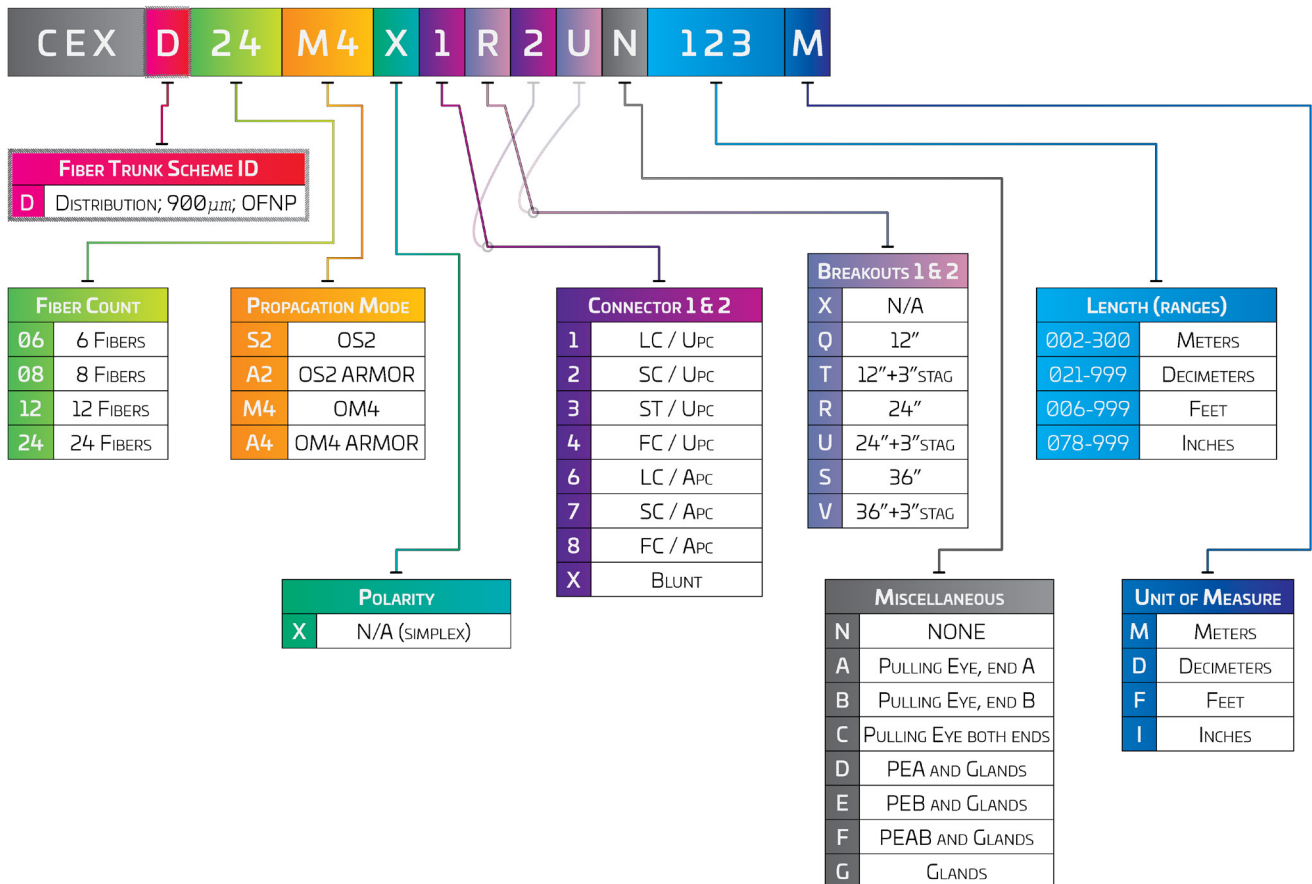
Plenum-rated (OFNP/OFCP)

- 900micron; Tight-Buffer
- Only Simplex Connectors Available

TIA-598-C Industry Color Coding Standards

- Yellow (OS2)
- Aqua (OM4)
- Colored Breakouts Every 12 Fibers

note that 'LENGTH (RANGES)' refers to overall length as measured from connector tips, excluding industry standard tolerances



MICRO-CORE FIBER TRUNKS

Pictured: CEXM12M4BURUN123M

Micro-core Fiber Trunks

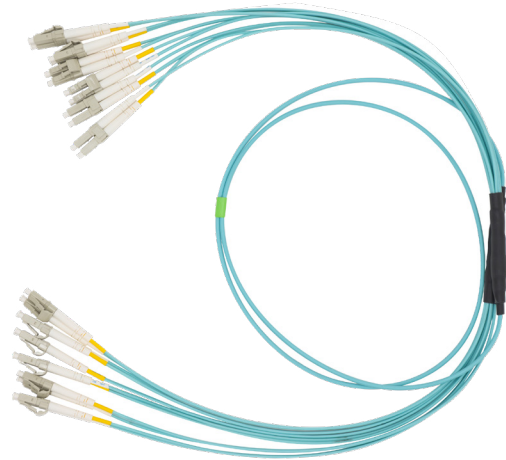
CEX Micro-core Fiber Trunks are a special solution when ducting space is of the highest concern. Using 250micron stacked fiber, excluding sub-units, it enables smaller overall diameters in the core cable. (See Sub-unitized Fiber Trunks for double-staggering and multi-fiber connectors).

Plenum-rated (OFNP/OFCP)

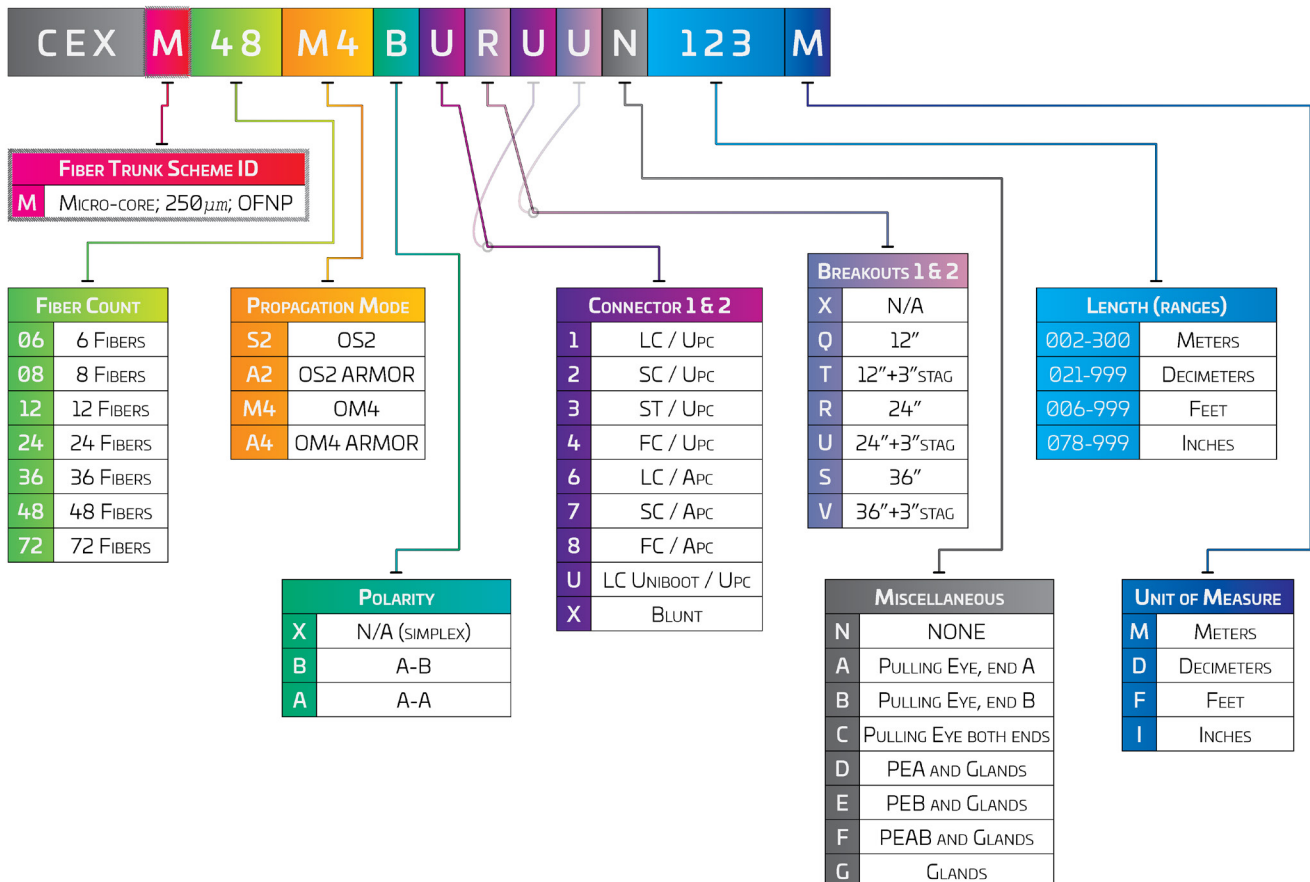
- 250micron
- Simplex and Duplex Connectors Available
- LC Uniboosts of Field-Reversible Polarity

TIA-598-C Industry Color Coding Standards

- Yellow (OS2)
- Aqua (OM4)
- Colored Breakouts Every 12 Fibers



note that 'LENGTH (RANGES)' refers to overall length as measured from connector tips, excluding industry standard tolerances



COPPER PATCH CABLES

Pictured: CEXC6V8F1B-C_006F (BK, WH, GY, BU, YE, GN)



Copper Patch Cables

CEX Copper Patch Cables give you affordable and reliable networking. With many different cable color and gauge optionsⁱ, this product family will fit the vast majority of your data connectivity needs.

CAT5e, CAT6, or CAT6a

- Typical 23 & 24 AWG, or Thinner 26 & 28 AWG

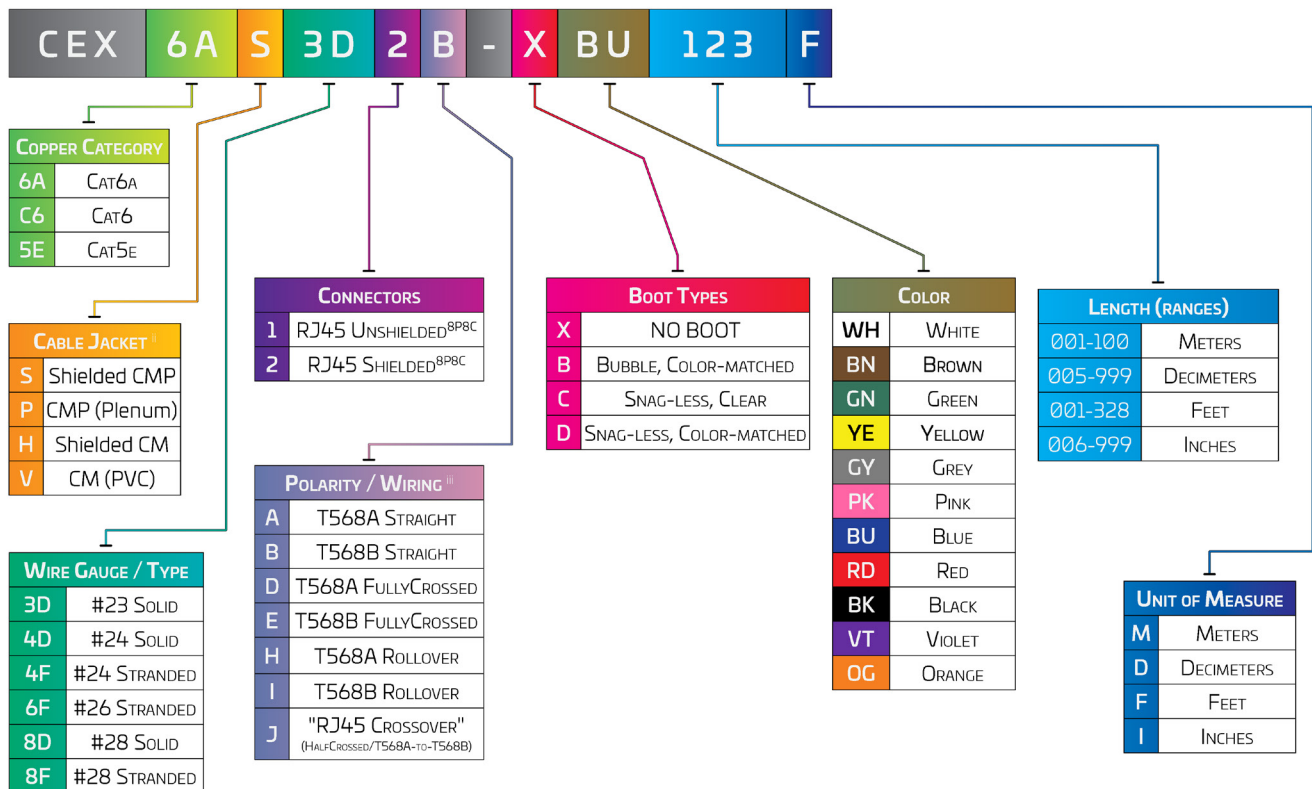
RJ45 Shielded or Unshielded

- 8-pin, 8-connector (8P8C)

28 AWG Stranded Tinned Copper up to 50 meters

- 68% the size of standard CAT6
- 48% smaller cross sectional area
- Improved Cable Density

note that `LENGTH (RANGES)` refers to overall length as measured from connector tips, excluding industry standard tolerances



i. subject to availability -- color options may vary depending on other component selections
 ii. 'S', 'H' -- overall foil shielding (F/UTP) or better
 iii. wiring diagrams available upon request

Need Custom Cables?

Cable Exchange has made it easier and quicker to design custom assemblies to fit your exact specifications. You can rely on us to provide innovative custom configurations for a variety of fiber and copper solutions. CEX Custom Cable Bundling and Labelling Solutions are examples of where we can maximize value and quality for our customers.

Guided by our in-house engineering teams, we create a solution that fits your cabinet, rack, or panel layout such that your installation speed and quality is lifted to the next level

- Engineering-supported designs and assembly drawings
- Prototype samples for field verification
- CEX Custom Outer Diameter up-jacketing, Breakouts and Labelling, Coloring, and Cable Bundling Solutions





*For more information, call us
Monday-Friday, 5am-5pm (PST) at:*

(800) 422-2539

or email us at:

CEXSales@CommScope.com