

TC-978-IP
Rev A, Mar 2017
www.commscope.com

Gel seals for the oval cable port of FIST-GCO2-BX8 and FX6 splice closure

Content

1 General product information

2 Kit content

3 Installation

- 3.1 General
- 3.2 FIST-GCO2-BX8
- 3.3 FIST-GCO2-FX
- 3.4 Installation without loop

1 General product information

This kit is used to install a looped cable of 16-20 mm in a new unused oval port of the FIST-GCO2-BX8 or FIST-GCO2-FX.

2 Kit content



FIST-GCO2-OSKG-NS

- Gel seal (2 parts)
- Securing screws: 3
- Lubricant
- Spiral tube: 2
- Installation instruction



FIST-OSKG20

Jacket and strength member securing kit for FIST-OSKG20

3 Installation

3.1 General

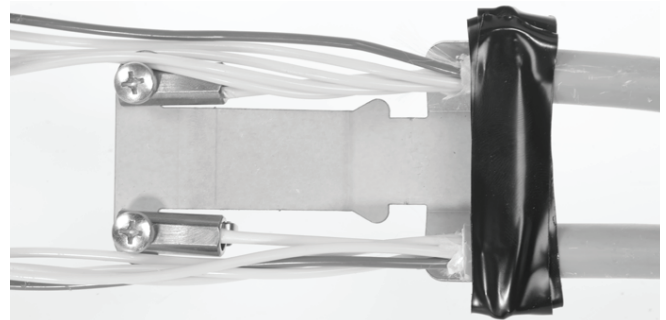
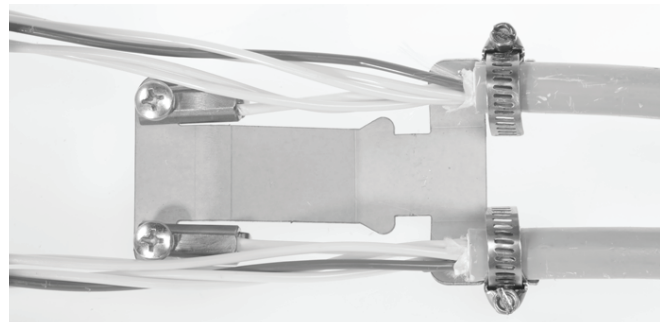
Thermoplastic gel seals	
Number of ports	Cable range (mm)
1	11-14
2	8-11
3	6,5-8
4	4-7
8	3-5
16	0-3
FOSC-OSKG	6-15
FIST-OSKG	5-18
FIST-OSKG20	16-20

3.1.1 Open the port with a cutting wire. Make sure the edges are free of burrs.

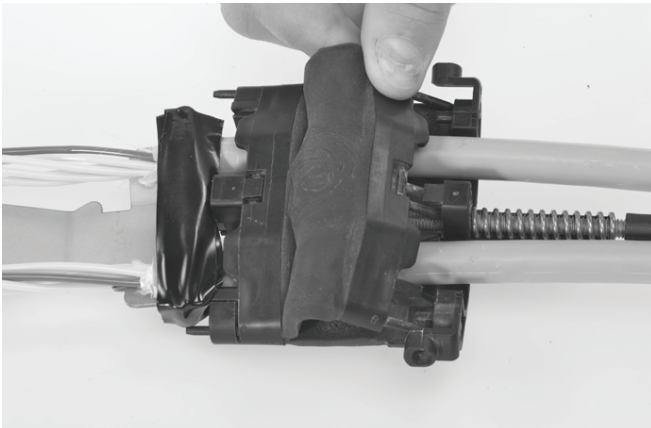
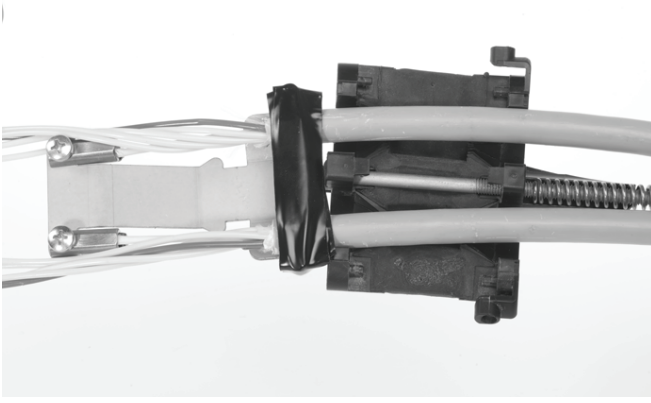
Prepare the loop cable as per standard practice.

3.2 Cable fixation in the FIST-GCO2-BX8

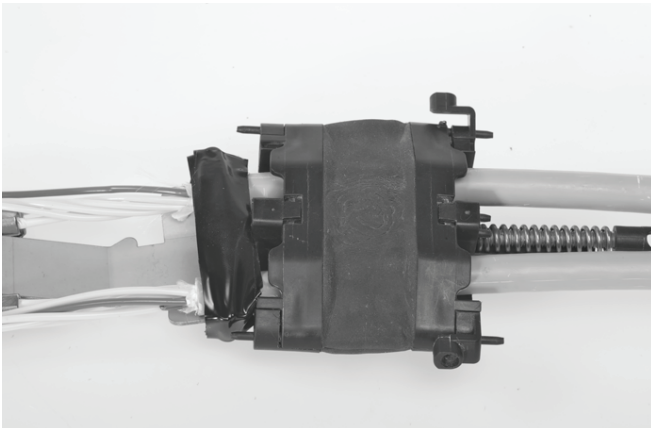
Remark: When uncut fibers are stored, the window cut needs to be extended with 500 mm.



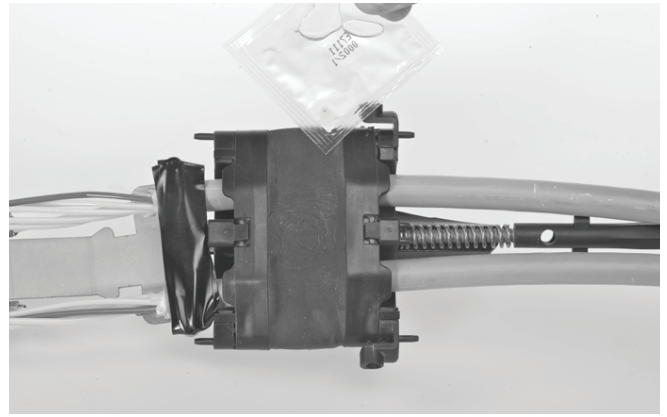
3.2.1 Install the metal bracket as shown: cables on top of metal bracket, hose clamps at the end of the cable jacket, knobs between the cables. Put some tape over the hose clamps. Strength members should be cut at 65 mm from the cable jacket.



3.2.2 Take the first gel-part (with trigger) and put the 2 cables in place, if needed lubricate the cables. Take the 2nd part and insert the pins in the corresponding holes at top and bottom.



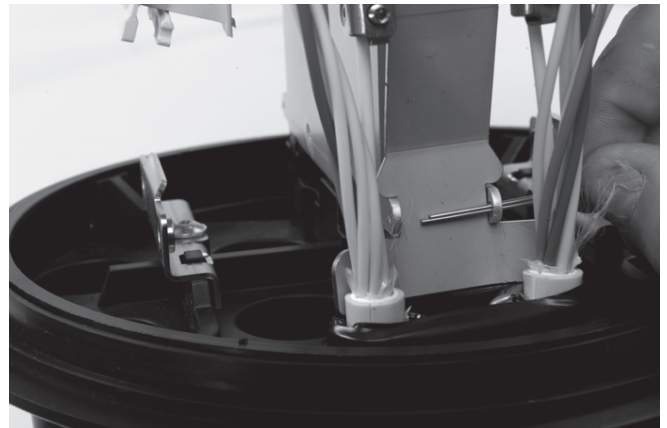
3.2.3 The securing hooks of part 2 must grab in part 1 (2 at the top and 2 at the bottom).



3.2.4 If needed apply some lubricant to the gel for easy insertion.



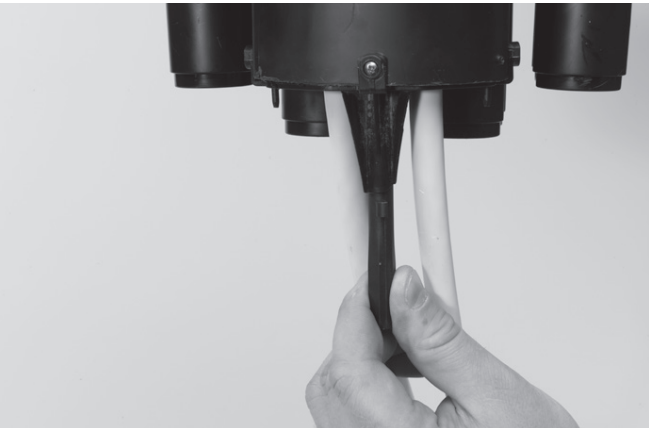
3.2.5 Insert the assembly as shown, metal bracket at the back of the cables!



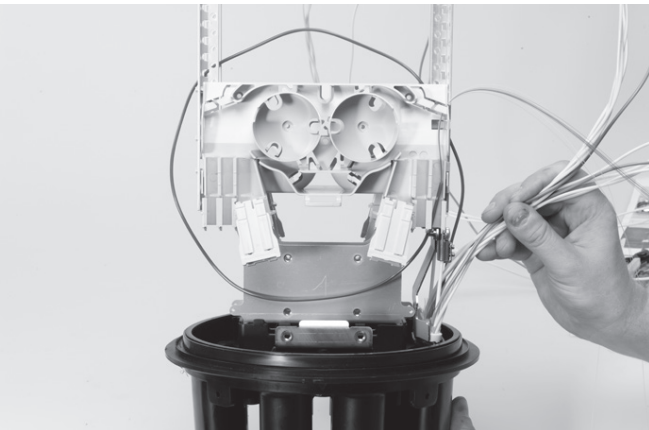
3.2.6 Install the metal bracket to the frame and secure with the split pin. Secure the strength members. Install the spiral tube over the loose tubes.



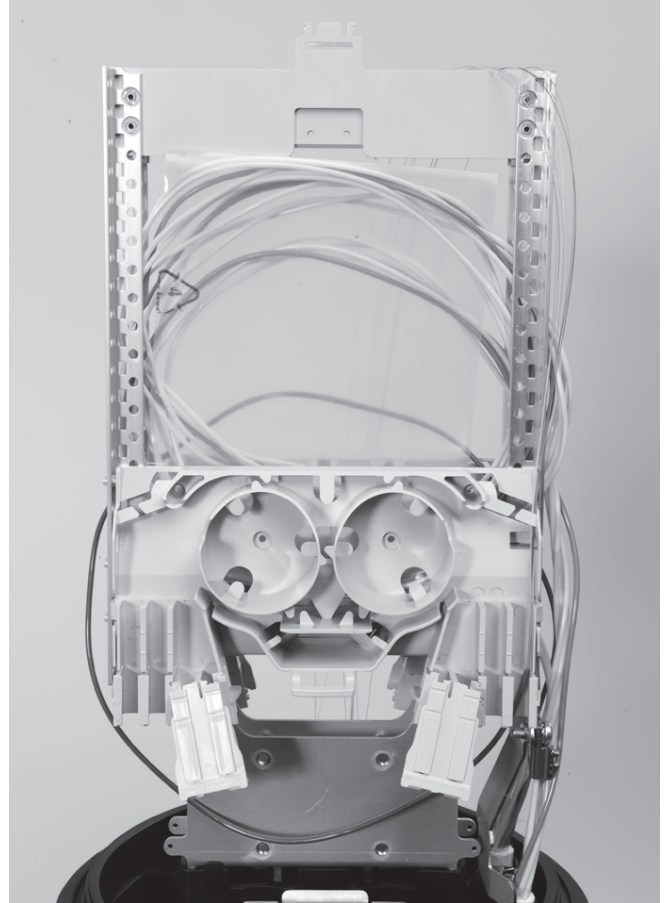
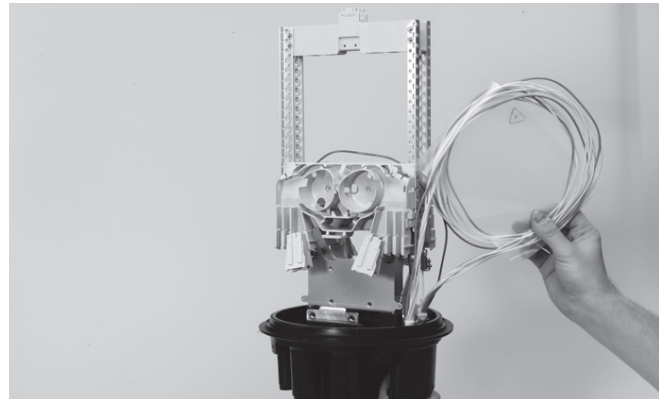
3.2.7 Tighten the 3 screws, make sure they grab in the port!



3.2.8 Tighten the trigger till it butts up with the flange.



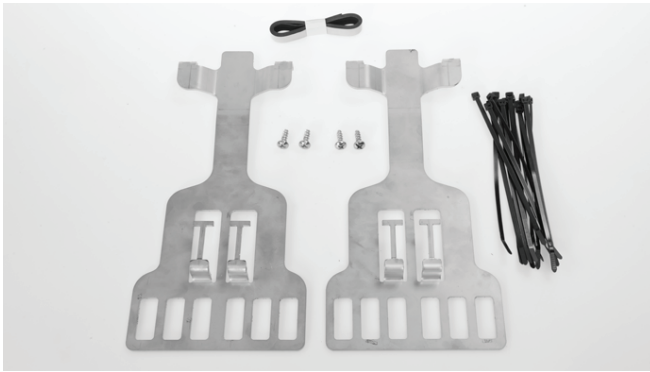
3.2.9 Tubes that are shaved should be routed between the UMS profiles (making a circle) and then via the bottom frame to the tube holder. Both sides can be reached. Shave between the 2 marks with the appropriate tooling. Add some Ptfе tape to the end of the loose tube and fibers! Proceed as per standard practice.



3.2.10 Uncut or unshaved tubes shall be treated as standard practice (store in plastic bag between UMS profiles). Make sure that the stored loops do not interfere with the shaved tubes.

A Optional: FIST-OSKG20

FIST-OSKG20 cable securing frame

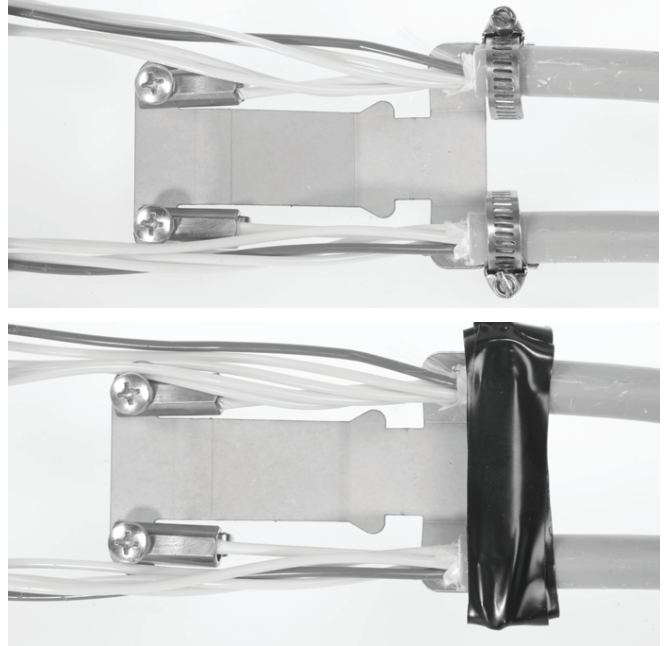


A1 A cable securing system can be mounted on to the base of the FIST-GCO2-BX8 with 4 screws. This allows cables to be secured outside the closure.

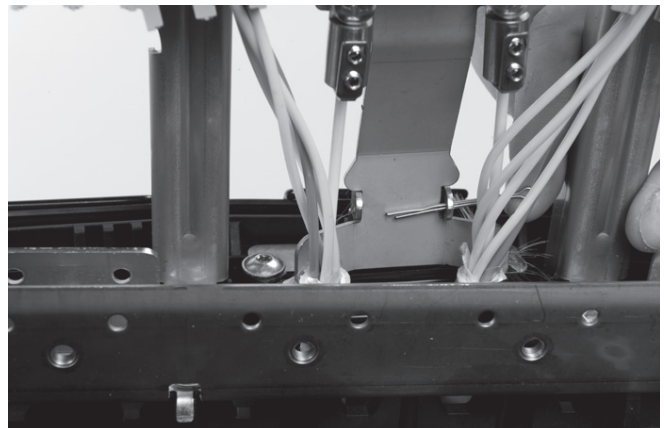


A2 Apply some foam to the cable(s) and secure with tie wrap(s) to the frame.

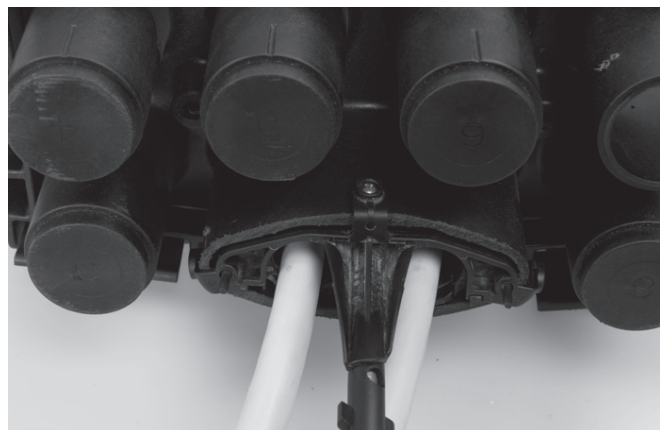
3.3 Cable fixation in the FIST-GCO2-FX



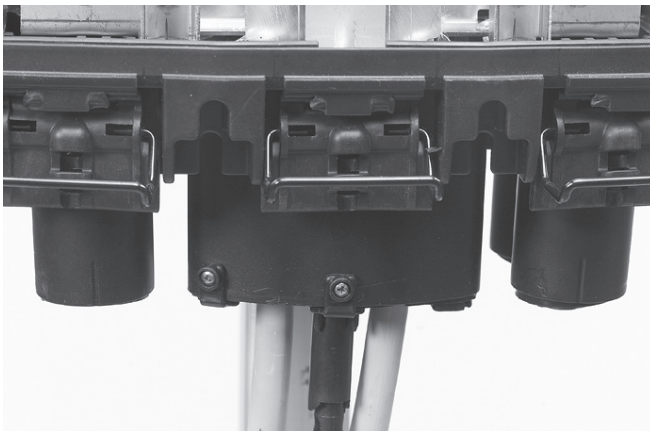
3.3.1 Install the metal bracket as shown, hose clamps at the end of the cable jacket, knobs between the cables. Apply some tape over the hose clamps. Strength members to should cut at 65 mm from the cable jacket.



3.3.2 Install the 2 gel parts as described in 3.2.2 -3.2.3.



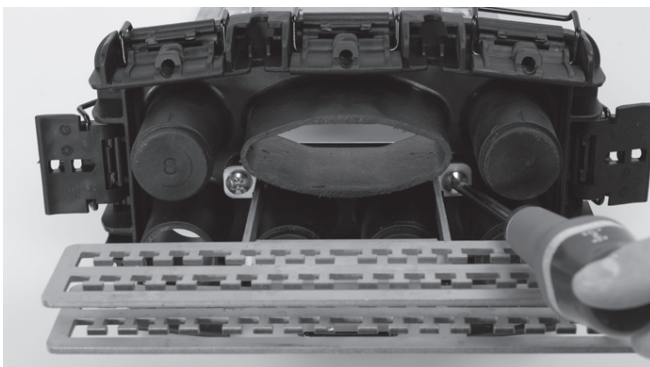
3.3.3 Insert the assembly as shown and secure with the split pin.



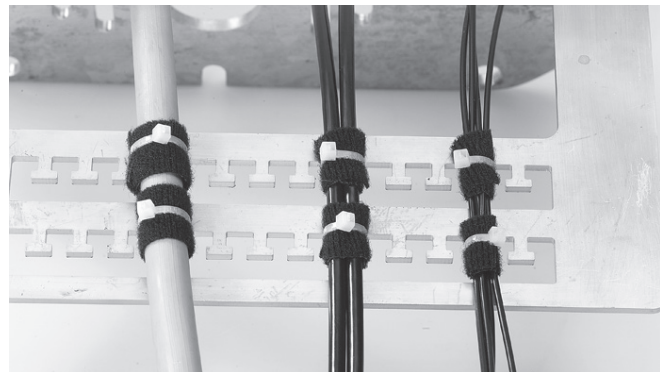
3.3.4 Tighten all 4 screws, make sure they grab in the port!

3.3.5 For loop storage and fiber termination see: II FIST-GCO2-F (TC 817/IP) § 4.1 c.

B Optional: FIST-GCO2-FX-EXT/CF

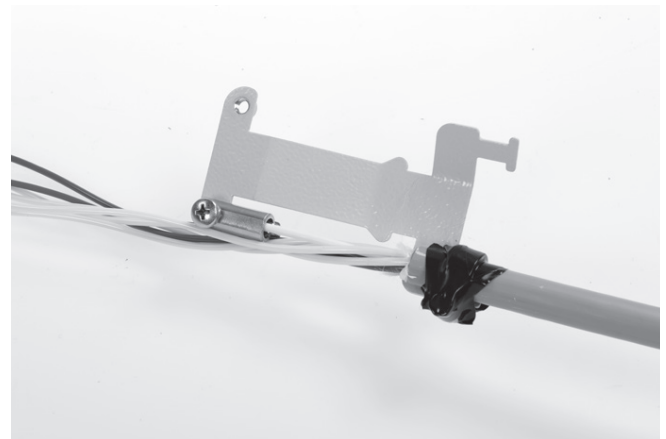
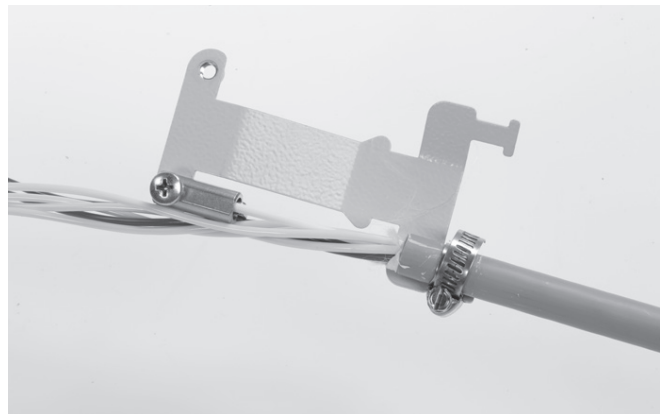


B1 Optional: the cable securing frame can be mounted onto the bottom of the closure with two delivered screws.

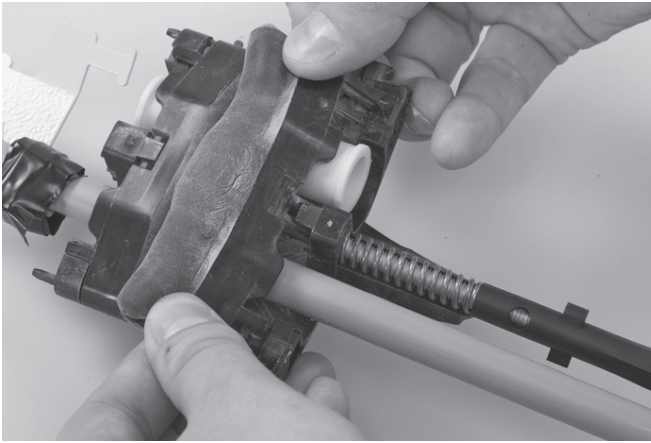
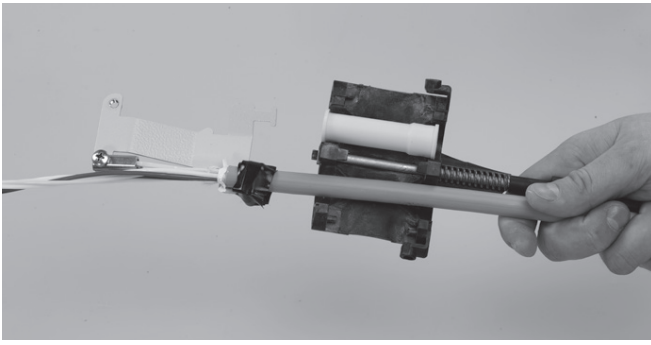


B2 Apply some foam to the cable(s) and secure with tie wrap(s) to the frame.

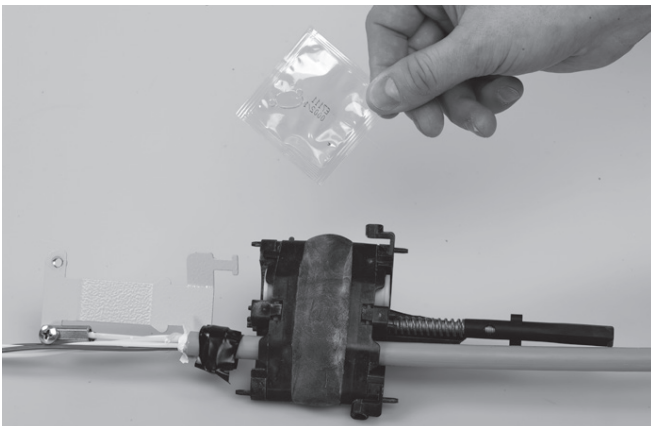
3.4 Installation without loop



3.4.1 Install the metal bracket as shown.



3.4.2 Take the first gel part (with trigger) and install 1 cable and yellow plug. Take the second part and insert the pins in the corresponding holes at top and bottom.



3.4.3 If necessary, apply some lubricant on the gel for easy insertion.

3.4.4 Continue with picture 3.2.5 in case of Bx8 and picture 3.3.2 in case of FX.