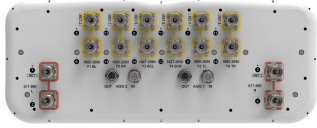


KKZZV4-65D-R8



16-port sector antenna, 4x 617–960(R1, R2), 4x 1427–2690(Y3, Y4) and 8x 1695–2690(Y1, Y2, Y5, Y6) MHz, 65° HPBW, 8x RET. All Internal RET actuators are connected in “Cascaded SRET” configuration.

- Covers Band 71 with up to 4x MIMO support
- Utilize new aerodynamic endcap for wind load optimization

General Specifications

| | |
|---|--|
| Antenna Type | Sector |
| Band | Multiband |
| Color | Light Gray (RAL 7035) |
| Grounding Type | RF connector inner conductor and body grounded to reflector and mounting bracket |
| Performance Note | Outdoor usage |
| Radome Material | Fiberglass, UV resistant |
| Reflector Material | Aluminum |
| RF Connector Interface | 4.3-10 Female |
| RF Connector Location | Bottom |
| RF Connector Quantity, high band | 12 |
| RF Connector Quantity, mid band | 0 |
| RF Connector Quantity, low band | 4 |
| RF Connector Quantity, total | 16 |

Remote Electrical Tilt (RET) Information

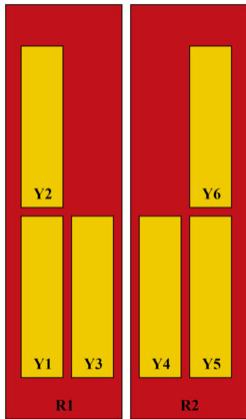
| | |
|---|-----------------------------------|
| RET Hardware | CommRET v2 |
| RET Interface | 8-pin DIN Female 8-pin DIN Male |
| RET Interface, quantity | 2 female 2 male |
| Input Voltage | 10–30 Vdc |
| Internal RET | High band (6) Low band (2) |
| Power Consumption, active state, maximum | 8 W |
| Power Consumption, idle state, maximum | 1 W |
| Protocol | 3GPP/AISG 2.0 (Single RET) |

KKZZV4-65D-R8

Dimensions

| | |
|---|----------------------|
| Width | 498 mm 19.606 in |
| Depth | 197 mm 7.756 in |
| Length | 2688 mm 105.827 in |
| Net Weight, without mounting kit | 55.7 kg 122.797 lb |

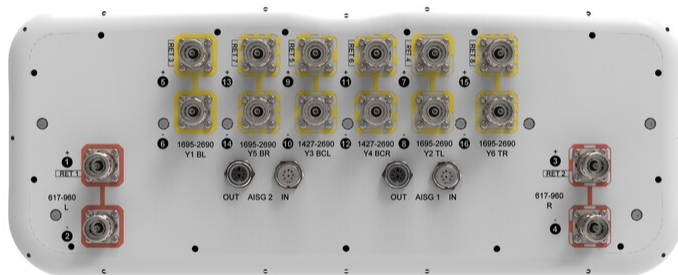
Array Layout



| Array ID | Frequency (MHz) | RF Connector | RET (SRET) | AISG RET UID |
|----------|-----------------|--------------|------------|----------------------|
| R1 | 617-960 | 1 - 2 | 1 | CPxxxxxxxxxxxxxxxxR1 |
| R2 | 617-960 | 3 - 4 | 2 | CPxxxxxxxxxxxxxxxxR2 |
| Y1 | 1695-2690 | 5 - 6 | 3 | CPxxxxxxxxxxxxxxxxY1 |
| Y2 | 1695-2690 | 7 - 8 | 4 | CPxxxxxxxxxxxxxxxxY2 |
| Y3 | 1427-2690 | 9 - 10 | 5 | CPxxxxxxxxxxxxxxxxY3 |
| Y4 | 1427-2690 | 11 - 12 | 6 | CPxxxxxxxxxxxxxxxxY4 |
| Y5 | 1695-2690 | 13 - 14 | 7 | CPxxxxxxxxxxxxxxxxY5 |
| Y6 | 1695-2690 | 15 - 16 | 8 | CPxxxxxxxxxxxxxxxxY6 |

(Sizes of colored boxes are not true depictions of array sizes)

Port Configuration



Electrical Specifications

| | |
|------------------|--------|
| Impedance | 50 ohm |
|------------------|--------|

KKZZV4-65D-R8

| | |
|-----------------------------------|---|
| Operating Frequency Band | 1427 – 1518 MHz 1695 – 2690 MHz 617 – 960 MHz |
| Polarization | ±45° |
| Total Input Power, maximum | 1,000 W @ 50 °C |

Electrical Specifications

| Frequency Band, MHz | 617–698 | 698–890 | 890–960 | 1427–1518 | 1695–1920 | 1920–2200 | 2300–2690 |
|---|----------|----------|----------|-----------|-----------|-----------|-----------|
| Gain, dBi | 15.4 | 16 | 16.4 | 15.5 | 17.3 | 18.2 | 18.2 |
| Beamwidth, Horizontal, degrees | 70 | 61 | 60 | 69 | 61 | 54 | 58 |
| Beamwidth, Vertical, degrees | 9.2 | 8 | 7 | 6.8 | 6.6 | 5.8 | 4.9 |
| Beam Tilt, degrees | 2–12 | 2–12 | 2–12 | 2–12 | 2–12 | 2–12 | 2–12 |
| USLS (First Lobe), dB | 17 | 17 | 16 | 15 | 16 | 17 | 18 |
| Front-to-Back Ratio at 180°, dB | 33 | 32 | 28 | 27 | 33 | 31 | 32 |
| Isolation, Cross Polarization, dB | 25 | 25 | 25 | 25 | 25 | 25 | 25 |
| Isolation, Inter-band, dB | 25 | 25 | 25 | 25 | 25 | 25 | 25 |
| VSWR Return loss, dB | 1.5 14.0 | 1.5 14.0 | 1.5 14.0 | 1.5 14.0 | 1.5 14.0 | 1.5 14.0 | 1.5 14.0 |
| PIM, 3rd Order, 2 x 20 W, dBc | -150 | -150 | -150 | -150 | -150 | -150 | -150 |
| Input Power per Port at 50°C, maximum, watts | 300 | 300 | 300 | 250 | 250 | 250 | 200 |

Mechanical Specifications

| | |
|---|---|
| Wind Loading @ Velocity, frontal | 944.0 N @ 150 km/h (212.2 lbf @ 150 km/h) |
| Wind Loading @ Velocity, lateral | 292.0 N @ 150 km/h (65.6 lbf @ 150 km/h) |
| Wind Loading @ Velocity, maximum | 1,130.0 N @ 150 km/h (254.0 lbf @ 150 km/h) |
| Wind Speed, maximum | 241 km/h (150 mph) |

Packaging and Weights

| | |
|-----------------------|----------------------|
| Width, packed | 565 mm 22.244 in |
| Depth, packed | 309 mm 12.165 in |
| Length, packed | 2935 mm 115.551 in |
| Weight, gross | 76.7 kg 169.094 lb |

Regulatory Compliance/Certifications

| Agency | Classification |
|--------|----------------|
|--------|----------------|

KKZZV4-65D-R8

| | |
|---------------|--|
| CHINA-ROHS | Above maximum concentration value |
| ISO 9001:2015 | Designed, manufactured and/or distributed under this quality management system |
| ROHS | Compliant/Exempted |
| UK-ROHS | Compliant/Exempted |



Included Products

- | | | |
|-----------|---|--|
| BSAMNT-4 | - | Wide Profile Antenna Downtilt Mounting Kit for 2.4 - 4.5 in (60 - 115 mm) OD round members. Kit contains one scissor top bracket set and one bottom bracket set. |
| BSAMNT-M4 | - | Middle Downtilt Mounting Kit for Long Antennas for 2.4 - 4.5 in (60 - 115 mm) OD round members. Kit contains one scissor bracket set. |

* Footnotes

Performance Note Severe environmental conditions may degrade optimum performance