

1. GENERAL NOTES

- 1.1 ALL METRIC DIMENSIONS ARE IN BRACKETS [X.X]
- 1.2 FEATURES CRITICAL TO QUALITY ARE INDICATED IN ROUNDED BOX (X.X)

2. DESIGN NOTES

- 2.#. THE FINISHED ITEM IS A SERIES ASSEMBLY. A -XX FINISH SUFFIX DESIGNATES A PRODUCT PART NUMBER THAT REPRESENTS SPECIFIC COLOR/FINISH. REFER TO METROCELL DOCUMENT MTM1004 FOR SPECIFIC COLOR REQUIREMENTS

3. MANUFACTURING/SPECIAL REQUIREMENTS

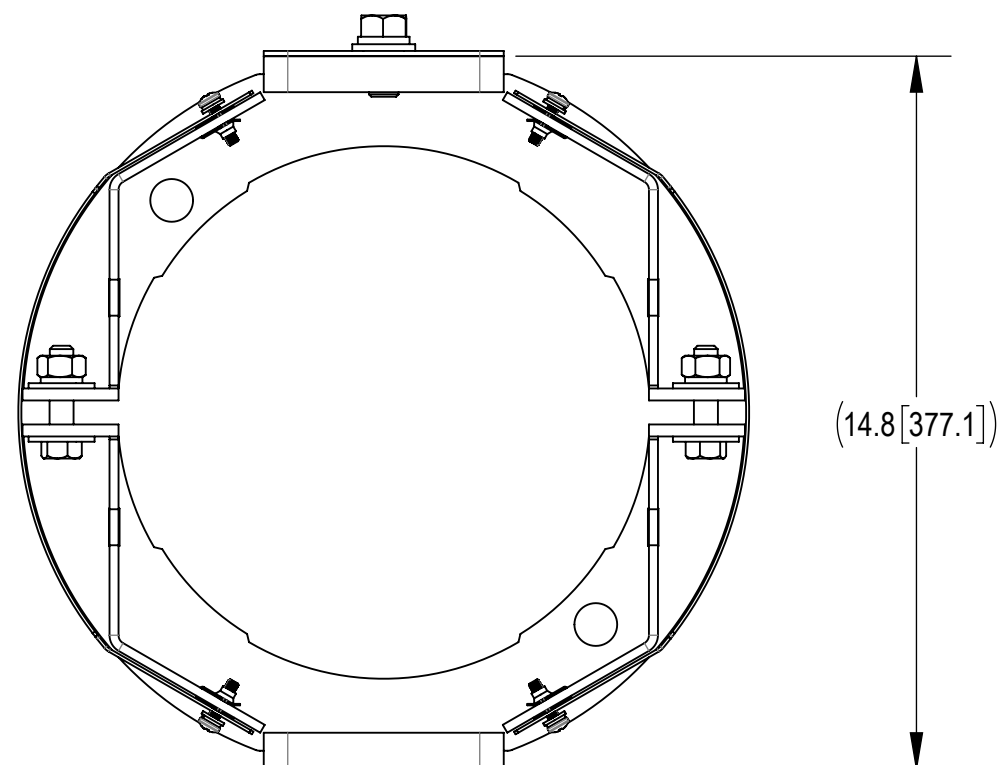
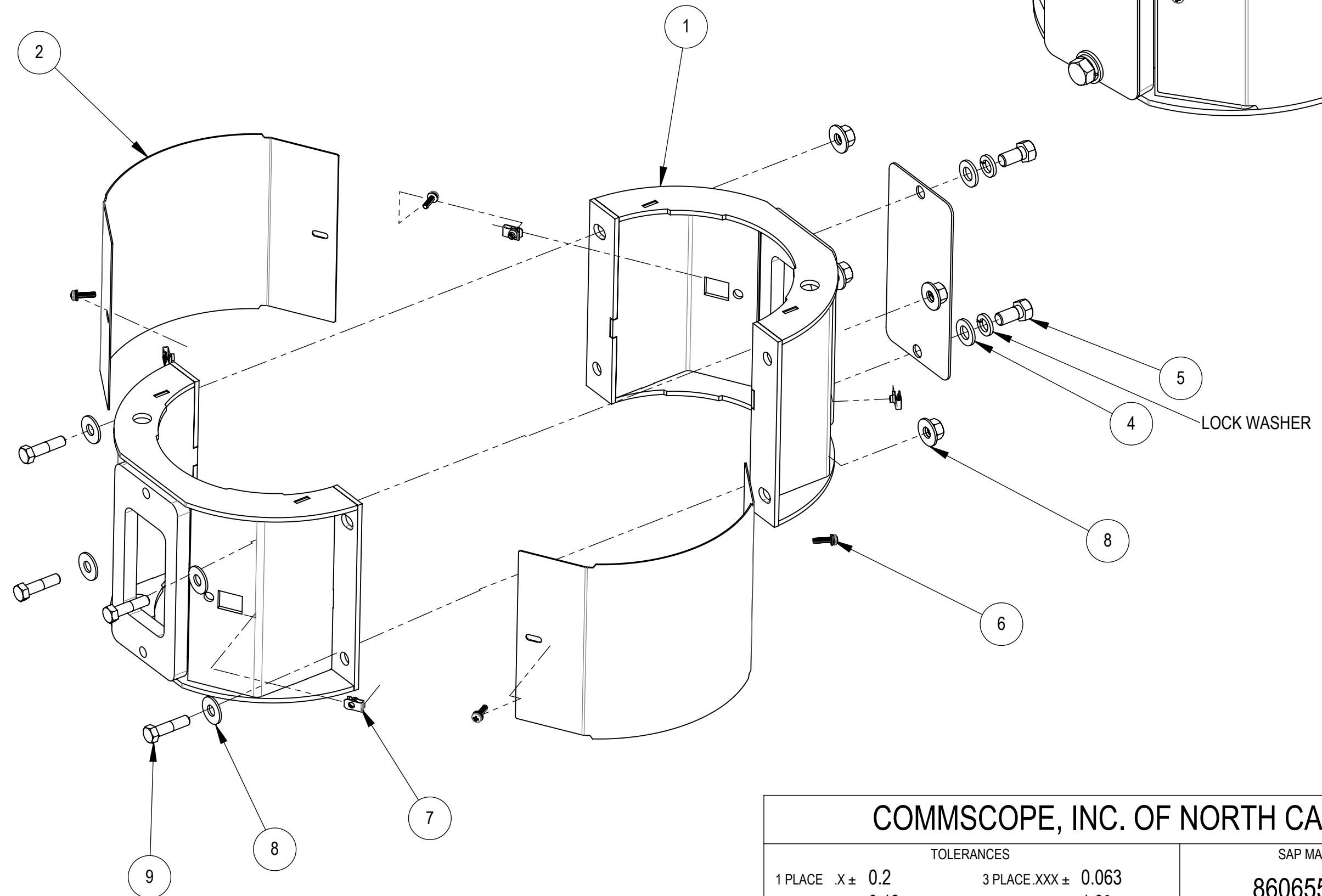
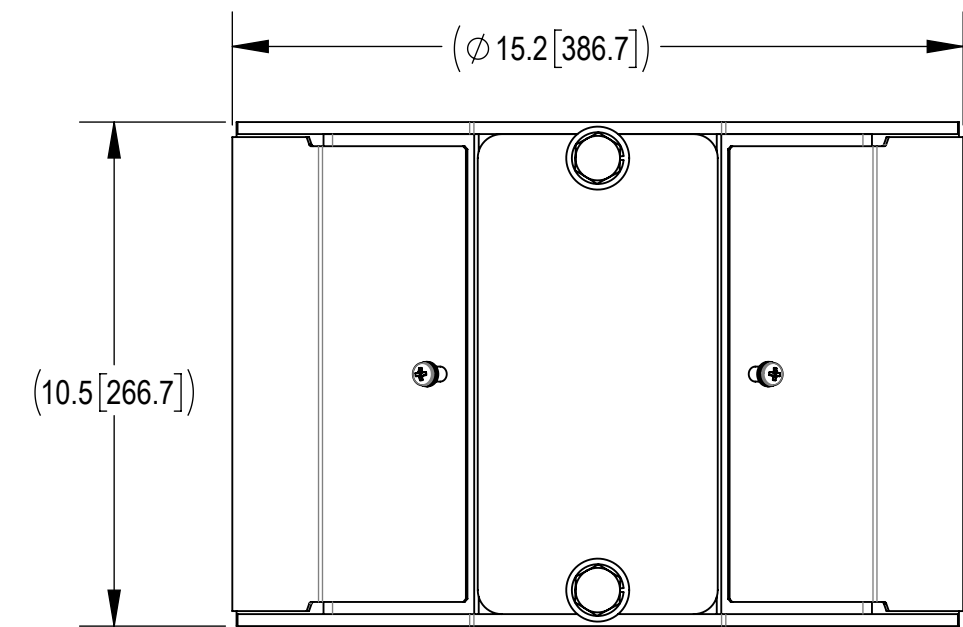
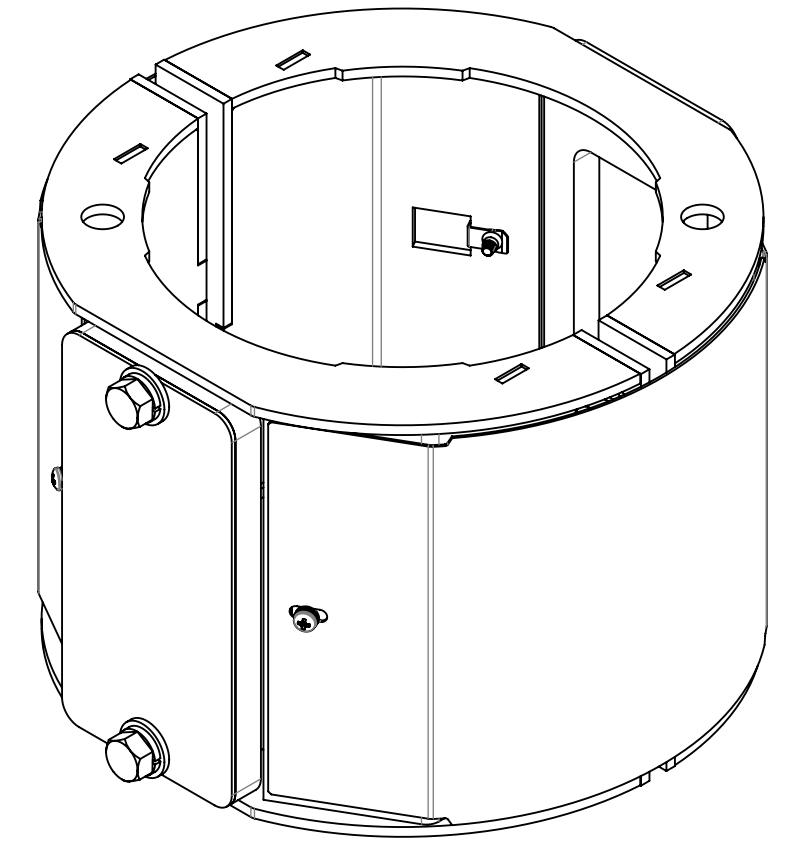
- 3.# "ANTI-SEIZE" SHALL BE USED ON ALL STAINLESS TO STAINLESS HARDWARE CONNECTIONS
- 3.# "NO-OX" SHALL BE USED ON ALL CHASSIS TO GROUND CABLE CONNECTIONS
- 3.# DO NOT TORQUE DOOR HARDWARE, ONLY SNUG TO SEAT
- 3.# TORQUE HARDWARE ACCORDING TO SIZE AS NOTED BELOW.
  - > M6X1.0: TORQUE 40 IN-LB
  - > 1/2-13: TORQUE 19 FT-LB

4. TESTING

5. PACKAGING

- 5.1 PACKAGING SHALL MEET COMMSCOPE REQUIRMENTS PER DOCUMENT IS-PL-3005
- 5.2 ITEMS NOTED WILL BE INCLUDED INSIDE OF HARDWARE KIT, ITEM 10
- 5.3 PLACE ENITRE CONTENTS IN BOX FOR SHIPMENT

| REVISIONS |            |                 |        |           |
|-----------|------------|-----------------|--------|-----------|
| REV.      | ECN        | DESCRIPTION     | BY     | DATE      |
| A         | 8000042913 | INITIAL RELEASE | RW1043 | 10/2/2020 |



|   |           |                      |                        |            |                        |        |          |        |  |  |
|---|-----------|----------------------|------------------------|------------|------------------------|--------|----------|--------|--|--|
| <b>COMMSCOPE, INC. OF NORTH CAROLINA</b>  |           |                      |                        |            |                        |        |          |        |  |  |
| TOLERANCES  |           |                      |                        |            | SAP MATERIAL MASTER    |        |          |        |  |  |
| 1 PLACE .X ± 0.2  |           | 3 PLACE .XXX ± 0.063 |                        |            | <b>860655390-10-XX</b> |        |          |        |  |  |
| 2 PLACE .XX ± 0.13  |           | ANGLES ± 1.0°        |                        |            |                        |        |          |        |  |  |
| FINISH<br>SEE NOTES   |           |                      |                        |            | MATERIAL<br>SEE BOM    |        |          |        |  |  |
| <b>CLAMP-ON 4 LUMINAIRE ARM 10.75 IN SERIES</b>                                     |           |                      |                        |            |                        |        |          |        |  |  |
| UNLESS OTHERWISE SPECIFIED DIMENSIONS ARE IN INCHES INTERPRET PER ANSI Y 14.5M-1994 |           | NAME                 | DATE                   | TITLE      |                        |        |          |        |  |  |
|   |           | CE                   | RW1043                 | 6 OCT 2020 | <b>860655390-10-XX</b> |        |          |        |  |  |
|   |           | RW                   | RW1043                 | 10/06/2020 |                        |        |          |        |  |  |
|   |           | RV                   | SF1043                 | 10/07/2020 |                        |        |          |        |  |  |
| AD  | RW1043    | 10/15/2020           |                        |            |                        |        |          |        |  |  |
| ECN 008000042913  |           | SCALE                | DOCUMENT NO.           |            |                        |        |          |        |  |  |
|   |           | <b>1:3</b>           | <b>860655390-10-XX</b> |            |                        |        |          |        |  |  |
| SIZE  | WORK AREA | MODEL                |                        |            | DRAWING                |        |          |        |  |  |
| <b>C</b>  | 24        | VERSION              | STATUS                 | REVISION   | VERSION                | STATUS | REVISION | SHEET  |  |  |
|   |           | 00                   | RE                     | A          | 00                     | RE     | A        | 1 OF 1 |  |  |

| ITEM NO. | PART NUMBER     | DESCRIPTION                           | QTY. | NOTES |
|----------|-----------------|---------------------------------------|------|-------|
| 1        | MTM1124-1530-XX | WLDMNT CLAMP-ON 10.75 IN SERIES       | 2    |       |
| 2        | MTM1124-1592-XX | COVER SEMI-WRAP 4 CLAMP-ON 10 BARE    | 2    |       |
| 3        | MTC399920-XX    | PLATE. STREET LIGHT ARMS COVER        | 1    |       |
| 4        | GWF05A          | GALV FLAT WASHER HARDENED 5/8", 1.3OD | 2    | 5.2   |
| 5        | GB-05125        | 5/8" X 1-1/4" GALV BOLT KIT           | 2    | 5.2   |
| 6        | 100117-4        | FA,SEMS,PH,XRES,M6X25,SST,PASS        | 4    | 5.2   |
| 7        | 460143456       | CLIP NUT, 316 SST ALLOY               | 4    | 5.2   |
| 8        | GWF-04          | 1/2" GALV FLAT WASHER                 | 8    | 5.2   |
| 9        | GB-0420A        | 1/2" X 2" GALV BOLT KIT (A325)        | 4    | 5.2   |
| 10       | MTM00HK-0018    | KIT, HDW 1/2"X2.0" A325 + FLATS (4/8) | 1    | 5.2   |

|              |         |                     |
|--------------|---------|---------------------|
| DENSITY      | 35.13   | lbs/in <sup>3</sup> |
| MASS         | 35.13   | lbs                 |
| VOLUME       | 200.23  | in <sup>3</sup>     |
| SURFACE AREA | 2374.62 | in <sup>2</sup>     |
| HEIGHT       | 15.2    |                     |
| LENGTH       | 10.5    |                     |
| WIDTH        | 14.8    |                     |