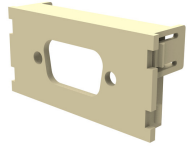


1479079-1



Faceplate insert for SVGA, 15-pin, Light Almond

Product Classification

Regional Availability	Asia Latin America North America
Portfolio	NETCONNECT®
Product Type	Insert kit
Product Series	SL Series

General Specifications

Color	Light almond
Total Ports, quantity	1

Dimensions

Height	23.62 mm 0.93 in
Width	48.26 mm 1.9 in
Depth	13.46 mm 0.53 in

Environmental Specifications

Environmental Space	Indoor
Flammability Rating	UL 94 V-0
Safety Standard	UL 1863

Packaging and Weights

Packaging quantity	1
Packaging Type	Bag
Weight, net	0.023 kg 0.05 lb

Regulatory Compliance/Certifications

Agency	Classification
CHINA-ROHS	Below maximum concentration value
REACH-SVHC	Compliant as per SVHC revision on www.commscope.com/ProductCompliance

1479079-1

ROHS

Compliant

UK-ROHS

Compliant

