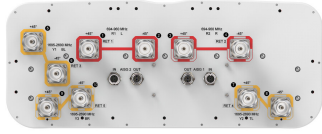


# 10P-4L6M-D5



10-port sector antenna, 4x 694–960 and 6x 1695–2690 MHz, 65° HPBW, 5x RET

- All Internal RET actuators are connected in “Cascaded SRET” configuration
- Supports re-configurable antenna sharing capability enabling control of the internal RET system using up to two separate RET compatible OEM radios

## General Specifications

|  |  |
|--|--|
| <b>Antenna Type</b>                    | Sector   |
| <b>Band</b>                            | Multiband  |
| <b>Color</b>                           | Light Gray (RAL 7035)  |
| <b>Grounding Type</b>                  | RF connector inner conductor and body grounded to reflector and mounting bracket                                     |
| <b>Performance Note</b>                | Outdoor usage   Wind loading figures are validated by wind tunnel measurements described in white paper WP-112534-EN |
| <b>Radome Material</b>                 | Fiberglass, UV resistant   |
| <b>Reflector Material</b>              | Aluminum   |
| <b>RF Connector Interface</b>          | 4.3-10 Female  |
| <b>RF Connector Location</b>           | Bottom   |
| <b>RF Connector Quantity, mid band</b> | 6  |
| <b>RF Connector Quantity, low band</b> | 4  |
| <b>RF Connector Quantity, total</b>    | 10   |

## Remote Electrical Tilt (RET) Information

|   |                                   |
|---|-----------------------------------|
| <b>RET Hardware</b>                             | CommRET v2                        |
| <b>RET Interface</b>                            | 8-pin DIN Female   8-pin DIN Male |
| <b>RET Interface, quantity</b>                  | 2 female   2 male                 |
| <b>Input Voltage</b>                            | 10–30 Vdc                         |
| <b>Internal RET</b>                             | Low band (2)   Mid band (3)       |
| <b>Power Consumption, active state, maximum</b> | 8 W                               |
| <b>Power Consumption, idle state, maximum</b>   | 1 W                               |
| <b>Protocol</b>                                 | 3GPP/AISG 2.0 (Single RET)        |

## Dimensions

# 10P-4L6M-D5

|                                 |                      |
|---------------------------------|----------------------|
| <b>Width</b>                    | 498 mm   19.606 in   |
| <b>Depth</b>                    | 197 mm   7.756 in    |
| <b>Length</b>                   | 2688 mm   105.827 in |
| <b>Net Weight, antenna only</b> | 43.2 kg   95.24 lb   |

## Array Layout

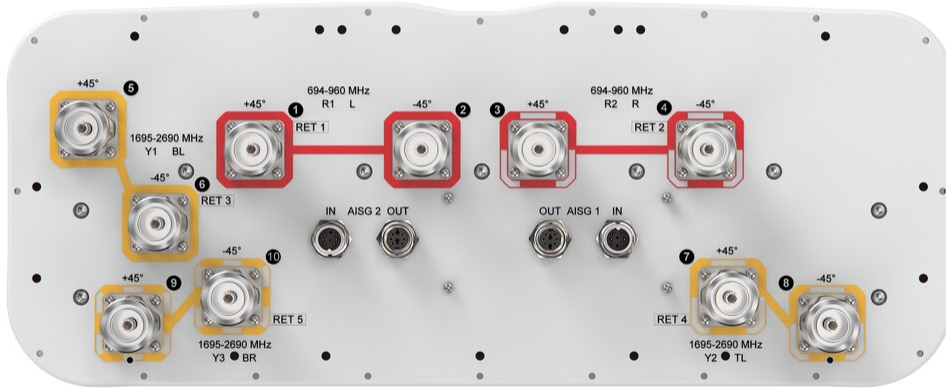
| Array | Freq (MHz) | Conns | RET (SRET) | AISG RET UID         |
|-------|------------|-------|------------|----------------------|
| R1    | 694-960    | 1-2   | 1          | CPxxxxxxxxxxxxxxxxR1 |
| R2    | 694-960    | 3-4   | 2          | CPxxxxxxxxxxxxxxxxR2 |
| Y1    | 1695-2690  | 5-6   | 3          | CPxxxxxxxxxxxxxxxxY1 |
| Y2    | 1695-2690  | 7-8   | 4          | CPxxxxxxxxxxxxxxxxY2 |
| Y3    | 1695-2690  | 9-10  | 5          | CPxxxxxxxxxxxxxxxxY3 |

Left Bottom Right

(Sizes of colored boxes are not true depictions of array sizes)

## Port Configuration

# 10P-4L6M-D5



## Electrical Specifications

|                                 |                                 |
|---------------------------------|---------------------------------|
| <b>Impedance</b>                | 50 ohm                          |
| <b>Operating Frequency Band</b> | 1695 – 2690 MHz   694 – 960 MHz |
| <b>Polarization</b>             | ±45°                            |

## Electrical Specifications

| Frequency Band, MHz                      | 694–790 | 790–890 | 880–960 | 1695–1880 | 1850–1990 | 1920–2180 | 2300–2500 | 2500–2690 |
|--|---------|---------|---------|-----------|-----------|-----------|-----------|-----------|
| <b>Gain, dBi</b>                         | 15.8    | 16.4    | 16.8    | 17        | 17.6      | 17.8      | 18.3      | 17.8      |
| <b>Beamwidth, Horizontal, degrees</b>    | 70      | 67      | 62      | 59        | 60        | 61        | 61        | 69        |
| <b>Beamwidth, Vertical, degrees</b>      | 8.1     | 7.4     | 6.8     | 7.5       | 7         | 6.6       | 5.7       | 5.3       |
| <b>Beam Tilt, degrees</b>                | 2–12    | 2–12    | 2–12    | 2–12      | 2–12      | 2–12      | 2–12      | 2–12      |
| <b>USLS (First Lobe), dB</b>             | 12      | 16      | 17      | 20        | 20        | 20        | 18        | 16        |
| <b>Front-to-Back Ratio at 180°, dB</b>   | 32      | 32      | 33      | 37        | 38        | 36        | 34        | 33        |
| <b>Isolation, Cross Polarization, dB</b> | 28      | 28      | 28      | 28        | 28        | 28        | 28        | 28        |
| <b>Isolation, Inter-band, dB</b>         | 30      | 30      | 30      | 30        | 30        | 30        | 30        | 30        |

# 10P-4L6M-D5

|   |          |          |          |          |          |          |          |          |
|---|----------|----------|----------|----------|----------|----------|----------|----------|
| <b>VSWR   Return loss, dB</b>                       | 1.5 14.0 | 1.5 14.0 | 1.5 14.0 | 1.5 14.0 | 1.5 14.0 | 1.5 14.0 | 1.5 14.0 | 1.5 14.0 |
| <b>PIM, 3rd Order, 2 x 20 W, dBc</b>                | -150     | -150     | -150     | -150     | -150     | -150     | -150     | -150     |
| <b>Input Power per Port at 50°C, maximum, watts</b> | 300      | 300      | 300      | 250      | 250      | 250      | 200      | 200      |

## Electrical Specifications, BASTA

| <b>Frequency Band, MHz</b>                         | <b>694–790</b> | <b>790–890</b> | <b>880–960</b> | <b>1695–1880</b> | <b>1850–1990</b> | <b>1920–2180</b> | <b>2300–2500</b> | <b>2500–2690</b> |
|--|----------------|----------------|----------------|------------------|------------------|------------------|------------------|------------------|
| <b>Gain by all Beam Tilts, average, dBi</b>        | 15.5           | 16.2           | 16.6           | 16.5             | 17.2             | 17.4             | 17.8             | 17.2             |
| <b>Gain by all Beam Tilts Tolerance, dB</b>        | ±0.5           | ±0.4           | ±0.3           | ±0.9             | ±0.5             | ±0.6             | ±0.6             | ±0.7             |
| <b>Beamwidth, Horizontal Tolerance, degrees</b>    | ±4.4           | ±2.9           | ±4.6           | ±3.7             | ±1.6             | ±2.3             | ±6.4             | ±6.3             |
| <b>Beamwidth, Vertical Tolerance, degrees</b>      | ±0.4           | ±0.6           | ±0.4           | ±0.5             | ±0.3             | ±0.5             | ±0.3             | ±0.2             |
| <b>USLS, beampeak to 20° above beampeak, dB</b>    | 12             | 15             | 16             | 13               | 15               | 16               | 15               | 13               |
| <b>Front-to-Back Total Power at 180° ± 30°, dB</b> | 21             | 21             | 22             | 30               | 32               | 29               | 28               | 27               |
| <b>CPR at Boresight, dB</b>                        | 25             | 25             | 25             | 18               | 22               | 22               | 17               | 17               |
| <b>CPR at Sector, dB</b>                           | 8              | 5              | 7              | 8                | 10               | 9                | 8                | 5                |

## Mechanical Specifications

|   |   |
|---|---|
| <b>Wind Loading @ Velocity, frontal</b> | 1,070.0 N @ 150 km/h (240.5 lbf @ 150 km/h) |
| <b>Wind Loading @ Velocity, lateral</b> | 375.0 N @ 150 km/h (84.3 lbf @ 150 km/h)    |
| <b>Wind Loading @ Velocity, maximum</b> | 1,385.0 N @ 150 km/h (311.4 lbf @ 150 km/h) |
| <b>Wind Loading @ Velocity, rear</b>    | 880.0 N @ 150 km/h (197.8 lbf @ 150 km/h)   |
| <b>Wind Speed, maximum</b>              | 241 km/h (150 mph)                          |

## Packaging and Weights

|                       |                      |
|-----------------------|----------------------|
| <b>Width, packed</b>  | 565 mm   22.244 in   |
| <b>Depth, packed</b>  | 368 mm   14.488 in   |
| <b>Length, packed</b> | 2874 mm   113.15 in  |
| <b>Weight, gross</b>  | 64.7 kg   142.639 lb |

## Regulatory Compliance/Certifications

| <b>Agency</b> | <b>Classification</b>             |
|---------------|-----------------------------------|
| CHINA-ROHS    | Above maximum concentration value |

# 10P-4L6M-D5

---

|               |  |
|---------------|--|
| ISO 9001:2015 | Designed, manufactured and/or distributed under this quality management system |
| ROHS          | Compliant/Exempted   |
| UK-ROHS       | Compliant/Exempted   |



## Included Products

|           |   |  |
|-----------|---|--|
| BSAMNT-4  | - | Wide Profile Antenna Downtilt Mounting Kit for 2.4 - 4.5 in (60 - 115 mm) OD round members. Kit contains one scissor top bracket set and one bottom bracket set. |
| BSAMNT-M4 | - | Middle Downtilt Mounting Kit for Long Antennas for 2.4 - 4.5 in (60 - 115 mm) OD round members. Kit contains one scissor bracket set.                            |

## \* Footnotes

|                         |   |
|-------------------------|---|
| <b>Performance Note</b> | Severe environmental conditions may degrade optimum performance |
|-------------------------|---|

# BSAMNT-4



Wide Profile Antenna Downtilt Mounting Kit for 2.4 - 4.5 in (60 - 115 mm) OD round members. Kit contains one scissor top bracket set and one bottom bracket set.

## Product Classification

**Product Type** Downtilt mounting kit

## General Specifications

**Application** Outdoor

**Color** Silver

## Dimensions

**Compatible Diameter, maximum** 115 mm | 4.528 in

**Compatible Diameter, minimum** 60 mm | 2.362 in

**Weight, net** 6.5 kg | 14.33 lb

## Material Specifications

**Material Type** Galvanized steel

## Packaging and Weights

**Included** Brackets | Hardware

**Packaging quantity** 1

## Regulatory Compliance/Certifications

| Agency        | Classification   |
|---------------|--|
| CHINA-ROHS    | Below maximum concentration value  |
| ISO 9001:2015 | Designed, manufactured and/or distributed under this quality management system   |
| REACH-SVHC    | Compliant as per SVHC revision on <a href="http://www.commscope.com/ProductCompliance">www.commscope.com/ProductCompliance</a> |
| ROHS          | Compliant  |
| UK-ROHS       | Compliant  |



# BSAMNT-M4



Middle Downtilt Mounting Kit for Long Antennas for 2.4 - 4.5 in (60 - 115 mm) OD round members. Kit contains one scissor bracket set.

## Product Classification

**Product Type** Downtilt mounting kit

## General Specifications

**Application** Outdoor

**Color** Silver

## Dimensions

**Compatible Diameter, maximum** 115 mm | 4.528 in

**Compatible Diameter, minimum** 60 mm | 2.362 in

**Weight, net** 4.6 kg | 10.141 lb

## Material Specifications

**Material Type** Galvanized steel

## Packaging and Weights

**Included** Brackets | Hardware

**Packaging quantity** 1

## Regulatory Compliance/Certifications

| Agency        | Classification   |
|---------------|--|
| CHINA-ROHS    | Below maximum concentration value  |
| ISO 9001:2015 | Designed, manufactured and/or distributed under this quality management system   |
| REACH-SVHC    | Compliant as per SVHC revision on <a href="http://www.commscope.com/ProductCompliance">www.commscope.com/ProductCompliance</a> |
| ROHS          | Compliant  |
| UK-ROHS       | Compliant  |

