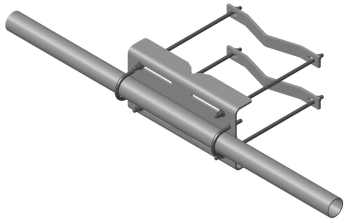


# MDL-SS-6R

---



Tower Leg Mounted Microwave Antenna Channel Support Kit, 96 in, includes pipe

## Product Classification

**Product Type** Microwave strut support

## General Specifications

**Mounting** Straight or tapered legs up to 406.4 mm (16 in) OD

**Pipe, quantity** 1

**Tower Taper** Non-tapered | Tapered

## Dimensions

**Height** 152.4 mm | 6 in

**Width** 1,828.8 mm | 72 in

**Length** 304.8 mm | 12 in

**Pipe Length** 1,828.8 mm | 72 in

**Mounting Diameter, maximum** 406.4 mm | 16 in

**Mounting Diameter, minimum** 50.8 mm | 2 in

**Pipe Outer Diameter** 88.9 mm | 3.5 in

## Material Specifications

**Material Type** Hot dip galvanized steel

## Mechanical Specifications

**Wind Rating** For Specifications, please contact [steelproducts@commscope.com](mailto:steelproducts@commscope.com) or call 800-255-1479

## Packaging and Weights

**Included** Attachment hardware | Clamps | Pipes

**Packaging quantity** 1

**Weight, net** 52.2 kg | 115.081 lb

# MDL-SS-6R

---

## Regulatory Compliance/Certifications

### Agency

CHINA-ROHS

ISO 9001:2015

ROHS

UK-ROHS



### Classification

Above maximum concentration value

Designed, manufactured and/or distributed under this quality management system

Compliant/Exempted

Compliant/Exempted

## \* Footnotes

### Wind Rating

BWS—Base Wind Speed; FBC—Florida Building Code