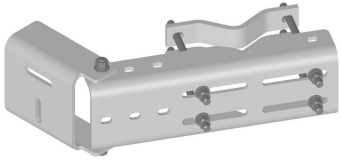


# MD-CS

---



Universal Microwave Strut Support for 8 in round or angle 60° or 6 in angle 90° legs

## Product Classification

**Product Type** Microwave strut support

## General Specifications

**Mounting** Straight or tapered legs up to 203.2 mm (8 in) OD

**Pipe, quantity** 0

**Tower Taper** Non-tapered | Tapered

## Dimensions

**Height** 152.4 mm | 6 in

**Width** 304.8 mm | 12 in

**Length** 203.2 mm | 8 in

**Mounting Diameter, maximum** 203.2 mm | 8 in

## Material Specifications

**Material Type** Hot dip galvanized steel

## Mechanical Specifications

**Wind Rating** For Specifications, please contact your local ANDREW representative

## Packaging and Weights

**Included** Attachment hardware | Clamps

**Packaging quantity** 1

**Weight, net** 24.9 kg | 54.895 lb

## Regulatory Compliance/Certifications

Agency	Classification
ISO 9001:2015	Designed, manufactured and/or distributed under this quality management system

\* Footnotes

**Wind Rating**

BWS—Base Wind Speed; FBC—Florida Building Code