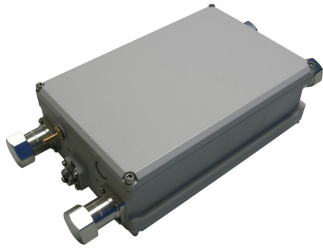


E15S09P97



Tower Mounted Amplifier, Dual DCS 1800

OBSOLETE

This product was discontinued on: June 30, 2022

Replaced By:

E14R00P02

Tower Mounted Amplifier, Dual DCS 1800 with AISG 2.0, with 4.3-10 connectors

Product Classification

Product Type 1-BTS:1-ANT (Uniplex) | Tower mounted amplifier

General Specifications

Color Gray
Modularity 2-Twin
Mounting Pole | Wall
Mounting Pipe Hardware Band clamps (2)
RF Connector Interface 7-16 DIN Female
RF Connector Interface Body Style Long neck

Dimensions

Height 260 mm | 10.236 in
Width 170 mm | 6.693 in
Depth 90 mm | 3.543 in
Ground Screw Diameter 8 mm | 0.315 in
Mounting Pipe Diameter Range 40–160 mm

Electrical Specifications

License Band, LNA DCS 1800

E15S09P97

Electrical Specifications, dc Power/Alarm

dc Switching/Redundancy	Yes
Lightning Surge Current	10 kA
Lightning Surge Current Waveform	8/20 waveform
Operating Current at Voltage	110 mA @ 12 V
Operating Current Tolerance	±20 mA
Voltage	7–30 Vdc
Alarm Current, CWA Mode	190 mA ±10 mA

Electrical Specifications

Sub-module	1 2
Branch	1
Port Designation	ANT
License Band	DCS 1800, LNA
Return Loss - Bypass Mode, typical, dB	14
TX Band Rejection, minimum, dB	85

Electrical Specifications Rx (Uplink)

Frequency Range, MHz	1710–1785
Bandwidth, MHz	75
Gain, nominal, dB	12
Gain Tolerance, dB	±1
Noise Figure, maximum, dB	1.4
Noise Figure, typical, dB	1.3
Group Delay Variation, maximum, ns	50
Group Delay Variation Bandwidth, MHz	5
Total Group Delay, maximum, ns	150
Output IP3, minimum, dBm	22
Return Loss, minimum, dB	18
Insertion Loss - Bypass Mode, typical, dB	3

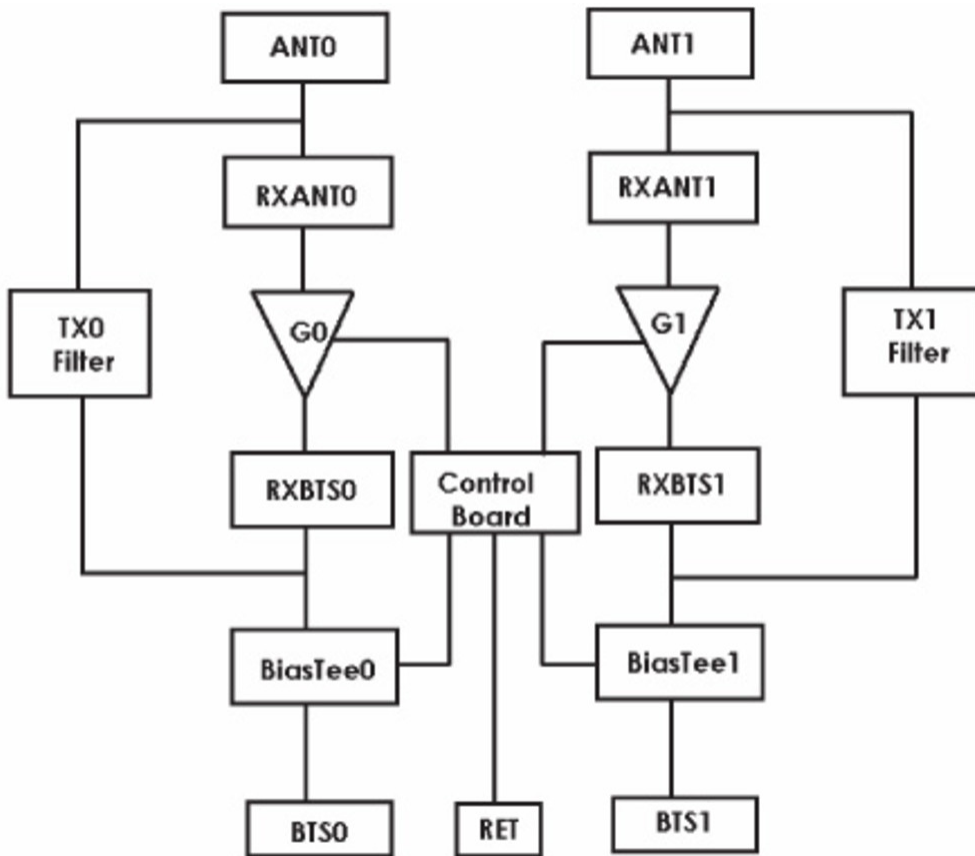
E15S09P97

Electrical Specifications Tx (Downlink)

Frequency Range, MHz	1805–1880
Bandwidth, MHz	75
Insertion Loss, maximum, dB	0.7
Insertion Loss Ripple, maximum, dB	0.5
Group Delay Variation, maximum, ns	11
Group Delay Variation Bandwidth, MHz	5
Total Group Delay, maximum, ns	45
Return Loss, minimum, dB	18
RX Band Rejection, minimum, dB	40
Input Power, RMS, maximum, W	200
Input Power, PEP, maximum, W	5000
3rd Order PIM, maximum, dBc	-155
3rd Order PIM Test Method	Two +43 dBm carriers

E15S09P97

Block Diagram



Material Specifications

Finish Painted

Environmental Specifications

Operating Temperature -40 °C to +65 °C (-40 °F to +149 °F)

Relative Humidity Up to 100%

Ingress Protection Test Method IEC 60529:2001, IP67

Packaging and Weights

Included Mounting hardware

Weight, net 5 kg | 11.023 lb

* Footnotes

E15S09P97

License Band, LNA

License Bands that have RxUplink amplification