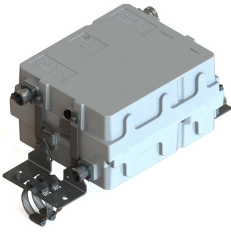


E15R05P19



Tower Mounted Amplifier, Twin Upper C 700 MHz with AISG and Variable Gain

OBSOLETE

Product Classification

Product Type 1-BTS:1-ANT (Uniplex) | Tower mounted amplifier

General Specifications

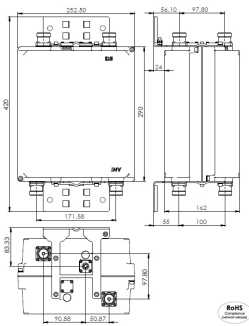
Color Gray
Modularity 2-Twin
Mounting Pole | Wall
Mounting Pipe Hardware Band clamps (4)
RF Connector Interface 7-16 DIN Female

Dimensions

Height 290 mm | 11.417 in
Width 252.5 mm | 9.941 in
Depth 162 mm | 6.378 in

Outline Drawing

E15R05P19



Electrical Specifications

License Band, LNA USA 750

Electrical Specifications, dc Power/Alarm

dc Switching/Redundancy	Yes
Lightning Surge Current	10 kA
Lightning Surge Current Waveform	8/20 waveform
Operating Current at Voltage	140 mA @ 12 V
Operating Current Tolerance	±15 mA
Voltage	10–30 Vdc
Voltage, CWA Mode	10–18 Vdc
Alarm Current, CWA Mode	180–200 mA @ 10–18 V

Electrical Specifications, AISG

AISG Carrier	2.176 MHz ± 100 ppm
AISG Connector	8-pin DIN Female
AISG Connector Standard	IEC 60130-9
Default Protocol	AISG 2.0
Protocol	AISG 1.1 AISG 2.0

E15R05P19

Voltage, AISG Mode 10–30 Vdc

Electrical Specifications

Sub-module	1	2
Branch	1	1
Port Designation	ANT 0	ANT 1
AISG 2.0 Device Subunit	1.a	1.b
License Band	USA 750, LNA	USA 750, LNA
Return Loss, typical, dB	24	24
Return Loss at 8 dB, typical, dB	22	22
Return Loss at 4 dB, typical, dB	20	20
Return Loss - Bypass Mode, typical, dB	16	16
TX Band Rejection, minimum, dB	80	80

Electrical Specifications Rx (Uplink)

Frequency Range, MHz	777.5–787	777.5–787
Bandwidth, MHz	9.5	9.5
Gain, nominal, dB	13	13
Gain Tolerance, dB	±1.0	±1.0
Gain Adjustment Range, dB	4–13	4–13
Gain Adjustment Range Increments, dB	1	1
Noise Figure, typical, dB	1.2	1.2
Noise Figure at 8 dB, typical, dB	1.5	1.5
Noise Figure at 4 dB, typical, dB	2.2	2.2
Total Group Delay, maximum, ns	330	330
Insertion Loss - Bypass Mode, typical, dB	2.3	2.3

Electrical Specifications Tx (Downlink)

Frequency Range, MHz	746–756	746–756
Bandwidth, MHz	10	10
Insertion Loss, maximum, dB	0.4	0.4
Insertion Loss, typical, dB	0.35	0.35
Total Group Delay, maximum, ns	70	70
Return Loss, minimum, dB	24	24
RX Band Rejection, minimum, dB	40	40

E15R05P19

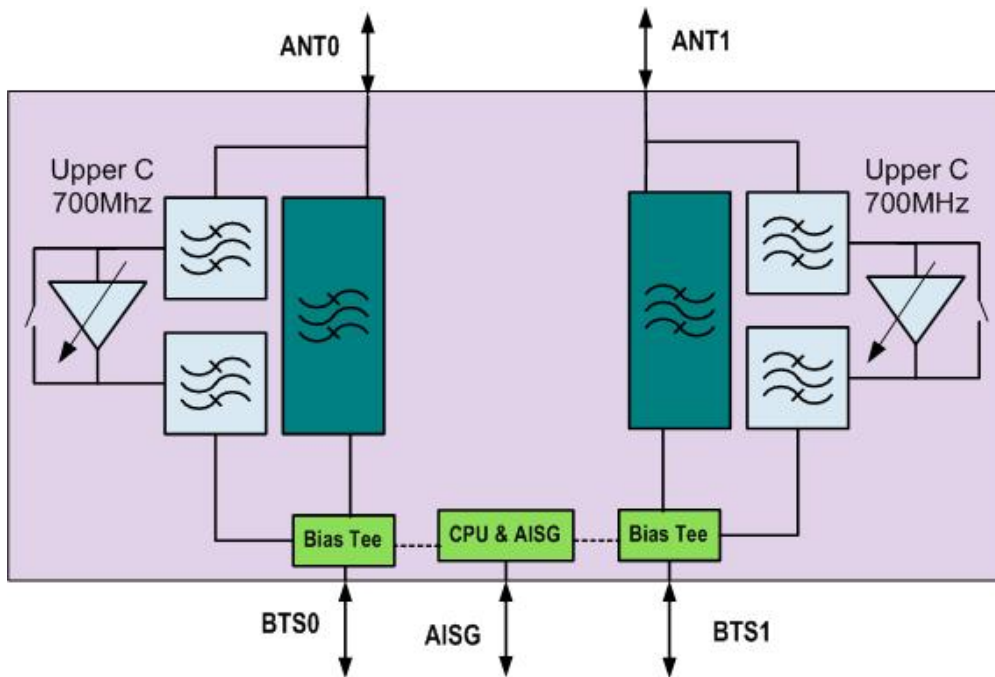
Input Power, RMS, maximum, W	100	100
Input Power, PEP, maximum, W	1000	1000
5th Order PIM, maximum, dBc	-150	-150
5th Order PIM Test Method	2 x 20 W CW tones	2 x 20 W CW tones

Electrical Specifications, Band Reject

Frequency Range, MHz	763–775	763–775
Attenuation, minimum, dB	40	40

E15R05P19

Block Diagram



Material Specifications

Finish Painted

Mechanical Specifications

Wind Speed, maximum 241 km/h (150 mph)

Environmental Specifications

Operating Temperature -40 °C to +65 °C (-40 °F to +149 °F)

Corrosion Test Method IEC 60068-2-11, 30 days

Ingress Protection Test Method IEC 60529:2001, IP67

Packaging and Weights

Included Mounting hardware

Weight, net 12.5 kg | 27.558 lb

* Footnotes

License Band, LNA License Bands that have RxUplink amplification