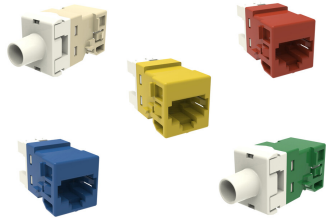


UNJ500

Base Product



M-Series Modular Jack, RJ45, Cat5e Unshielded

Product Classification

Regional Availability	North America
Portfolio	CommScope®
Product Type	Modular jack
Product Series	UNJ Series

General Specifications

ANSI/TIA Category	5e
Cable Type	Unshielded
Conductor Type	Solid Stranded
Mounting	M Series faceplates and panels
Outlet Feature	Inverted jack face
Outlet Type	Standard
Termination Tool	SL Termination tool
Termination Type	IDC
Transmission Standards	ANSI/TIA-568-C.2 ISO/IEC 11801 Class D
Wiring	T568A T568B

Dimensions

Panel Thickness, recommended	1.6 mm 0.063 in
Compatible Insulated Conductor Diameter, maximum	1.45 mm 0.057 in
Contact Plating Thickness	1.27 µm
Compatible Conductor Gauge, solid	24–22 AWG
Compatible Conductor Gauge, stranded	26–24 AWG

Electrical Specifications

Remote Powering	Fully supports the safe delivery of power over LAN cabling described
------------------------	--

UNJ500

by IEEE 802.3bt (Type 4) and complies with the unmating under electrical load requirements prescribed by IEC 60512-99-002

Supports IEEE 802.3bt Type 4 (90 W) applications greater than 3000 plug to jack mating cycles

PoE Durability

Material Specifications

Contact Base Material

Beryllium copper

Contact Plating Material

Gold

Mechanical Specifications

Plug to Jack Mating Cycles

Complies to IEC 60603-7 series

Environmental Specifications

Flammability Rating

UL 94 V-0