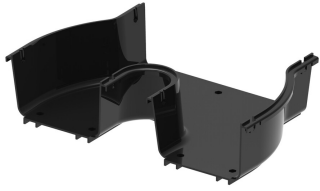


FGSB-MDSA-F2B



FiberGuide® Straight Reducer, 4x12 to Dual 4x6in, Black

Product Classification

Regional Availability	Asia Australia/New Zealand EMEA Latin America North America
Portfolio	CommScope®
Product Type	Reducer
Product Brand	FiberGuide®
Product Series	FGS

General Specifications

Color	Black
Orientation	Horizontal
Section Type	Reducer

Dimensions

System Dimensions	102 mm x 152 mm (4 in x 6 in) 102 mm x 305 mm (4 in x 12 in)
--------------------------	--

Ordering Tree

FGSB-MDSA-F2B



Section Color

9	empty	yellow
	B	black

Section Size

10	AB	4 x 4 in to 4 x 6 in
	AC	4 x 4 in to 2 x 2 in
	C2C	2 x 2 in to dual 2 x 2 in
	F2B	4 x 12 in to dual 4 x 6 in
	FB	4 x 4 in to 4 x 6 in
	FB-L	4 x 12 in to left 4 x 6 in , black*
	FB-R	4 x 12 in to right 4 x 6 in , black*
	HF-L	4 x 24 in to left 4 x 12 in , black*
	HF-R	4 x 24 in to right 4 x 12 in , black*
	HF	4 x 24 in to 4 x 12 in
	GA	2 x 6 in to 4 x 4 in
	GB	2 x 6 in to 4 x 6 in
	MF	4 x 18 in to 4 x 12 in

* Only comes in black

Material Specifications

Material Type Engineering Thermoplastic

Environmental Specifications

Flammability Rating CSA S143 | UL 2024 | UL 94 V-0

Halogen Characteristics Blue Angel | TCO '99 | WEEE

Safety Standard CSA | UL

Packaging and Weights

Weight, net 1.814 kg | 3.999 lb

Regulatory Compliance/Certifications

Agency

Classification

CHINA-ROHS

Below maximum concentration value

REACH-SVHC

Compliant as per SVHC revision on www.commscope.com/ProductCompliance

ROHS

Compliant

UK-ROHS

Compliant

