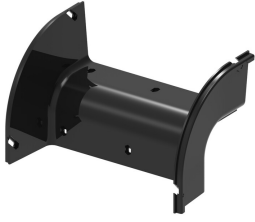


FGSB-MD9E-F



FiberGuide® 90° Down Elbow, 4x12in, Black

Product Classification

Regional Availability	Asia Australia/New Zealand EMEA Latin America North America
Portfolio	CommScope®
Product Type	Elbow
Product Brand	FiberGuide®
Product Series	FGS

General Specifications

Angle/Bend Direction	90° down
Color	Black
Orientation	Horizontal
Section Type	Elbow section

Dimensions

System Dimensions	102 mm x 305 mm (4 in x 12 in)
--------------------------	--------------------------------

Ordering Tree



Section Color

9	empty	yellow
	B	black

Section Size

10	A	4 x 4 in
	B	4 x 6 in
	C	2 x 2 in*
	F	4 x 12 in
	G	2 x 6 in

* FGS-MD9A-C or FGSB-MD9A-C

Material Specifications

FGSB-MD9E-F

Material Type Engineering Thermoplastic

Environmental Specifications

Flammability Rating CSA S143 | UL 2024 | UL 94 V-0

Halogen Characteristics Blue Angel | TCO '99 | WEEE

Safety Standard CSA | UL

Packaging and Weights

Weight, net 0.509 kg | 1.122 lb

Regulatory Compliance/Certifications

Agency	Classification
CHINA-ROHS	Below maximum concentration value
REACH-SVHC	Compliant as per SVHC revision on www.commscope.com/ProductCompliance
ROHS	Compliant
UK-ROHS	Compliant

