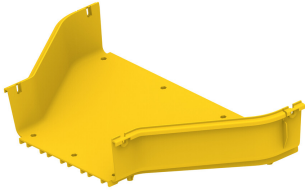


# FGS-MDSA-HF

---



FiberGuide® Straight Reducer, 4x24 to 4x12in, Yellow

## Product Classification

<b>Regional Availability</b>	Asia   Australia/New Zealand   EMEA   Latin America   North America
<b>Portfolio</b>	CommScope®
<b>Product Type</b>	Reducer
<b>Product Brand</b>	FiberGuide®
<b>Product Series</b>	FGS

## General Specifications

<b>Color</b>	Yellow
<b>Orientation</b>	Horizontal
<b>Section Type</b>	Reducer

## Dimensions

<b>Height</b>	120 mm   4.724 in
<b>Width</b>	652 mm   25.669 in
<b>System Dimensions</b>	102 mm x 305 mm (4 in x 12 in)   102 mm x 610 mm (4 in x 24 in)

## Ordering Tree

# FGS-MDSA-HF



## Section Color

9	empty	yellow
	B	black

## Section Size

10	AB	4 x 4 in to 4 x 6 in
	AC	4 x 4 in to 2 x 2 in
	C2C	2 x 2 in to dual 2 x 2 in
	F2B	4 x 12 in to dual 4 x 6 in
	FB	4 x 4 in to 4 x 6 in
	FB-L	4 x 12 in to left 4 x 6 in , black*
	FB-R	4 x 12 in to right 4 x 6 in , black*
	HF-L	4 x 24 in to left 4 x 12 in , black*
	HF-R	4 x 24 in to right 4 x 12 in , black*
	HF	4 x 24 in to 4 x 12 in
	GA	2 x 6 in to 4 x 4 in
	GB	2 x 6 in to 4 x 6 in

\* Only comes in black

## Material Specifications

**Material Type** Engineering Thermoplastic

## Environmental Specifications

**Flammability Rating** CSA S143 | UL 2024 | UL 94 V-0

**Halogen Characteristics** Blue Angel | TCO '99 | WEEE

**Safety Standard** CSA | UL

## Packaging and Weights

**Weight, net** 2.57 kg | 5.666 lb

## Regulatory Compliance/Certifications

### Agency

### Classification

CHINA-ROHS

Below maximum concentration value

REACH-SVHC

Compliant as per SVHC revision on [www.commscope.com/ProductCompliance](https://www.commscope.com/ProductCompliance)

ROHS

Compliant

UK-ROHS

Compliant

# FGS-MDSA-HF

---

