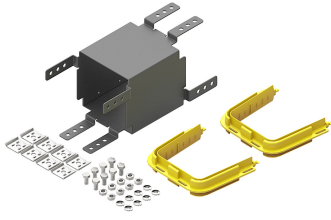


# FGS-HRJA-B



## FiberGuide® Reverse Junction Adapter Kit, 4x6in, Black

### Product Classification

<b>Regional Availability</b>	Asia   Australia/New Zealand   EMEA   Latin America   North America
<b>Portfolio</b>	CommScope®
<b>Product Type</b>	Fiber raceway joiner
<b>Product Brand</b>	FiberGuide®
<b>Product Series</b>	FGS

### General Specifications

<b>Color</b>	Black
<b>Orientation</b>	Horizontal
<b>Section Type</b>	Joiner section

### Dimensions

<b>System Dimensions</b>	102 mm x 152 mm (4 in x 6 in)
--------------------------	-------------------------------

### Material Specifications

<b>Material Type</b>	Engineering Thermoplastic
----------------------	---------------------------

### Environmental Specifications

<b>Flammability Rating</b>	CSA S143   UL 2024   UL 94 V-0
<b>Halogen Characteristics</b>	Blue Angel   TCO '99   WEEE
<b>Safety Standard</b>	CSA   UL

### Packaging and Weights

<b>Weight, net</b>	18.504 kg   40.794 lb
--------------------	-----------------------

### Regulatory Compliance/Certifications

Agency	Classification
--------	----------------

# FGS-HRJA-B

---

CHINA-ROHS	Below maximum concentration value
REACH-SVHC	Compliant as per SVHC revision on <a href="http://www.commscope.com/ProductCompliance">www.commscope.com/ProductCompliance</a>
ROHS	Compliant
UK-ROHS	Compliant

